

Polyclonal Antibody to X Ray Repair Cross Complementing 6 (XRCC6)

Catalog No: tcua7110



Available Sizes

Size: 20ul

Size: 100ul

Size: 200ul



Specifications

Application:

WB; IHC; ICC; IP.

Species Reactivity:

Mus musculus (Mouse)

Host Species:

Rabbit

Conjugation:

Unconjugated

Clonality:

Polyclonal

Form:

Liquid

Storage Buffer:

PBS, pH7.4, containing 0.01% SKL, 1mM DTT, 5% Trehalose and Proclin300.

Recommended Dilution:

Western blotting: 0.2-2µg/mL;1:250-2500

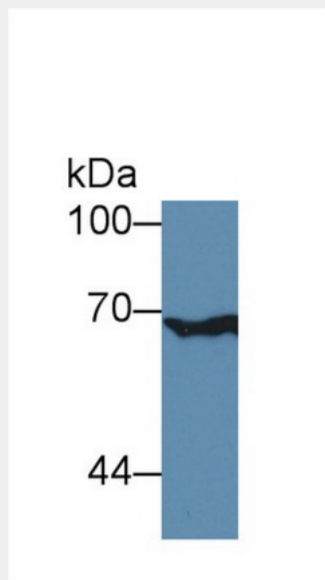
Immunohistochemistry: 5-20µg/mL;1:25-100

Immunocytochemistry: 5-20µg/mL;1:25-100

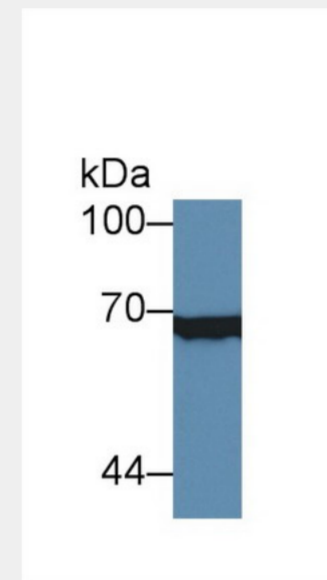
Optimal working dil

Alternative Names:

Ku70; CTC75; CTCBF; G22P1; ML8; TLAA; Lupus Ku Autoantigen Protein P70; ATP-Dependent DNA Helicase 2 Subunit 1; CTC box-binding factor 75 kDa; Thyroid-lupus autoantigen



Western Blot; Sample: Human A549 cell lysate;
Primary Ab: 3µg/ml Rabbit Anti-Mouse XRCC6 Antibody
Second Ab: 0.2µg/mL HRP-Linked Caprine Anti-Rabbit IgG Polyclonal Antibody
(Catalog: SAA544Rb19)



Western Blot; Sample: Human Hela cell lysate;
Primary Ab: 3µg/ml Rabbit Anti-Mouse XRCC6 Antibody
Second Ab: 0.2µg/mL HRP-Linked Caprine Anti-Rabbit IgG Polyclonal Antibody
(Catalog: SAA544Rb19)

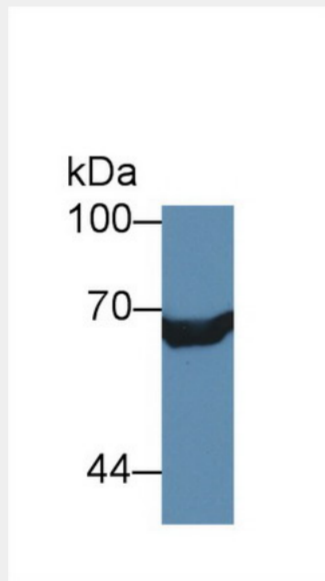
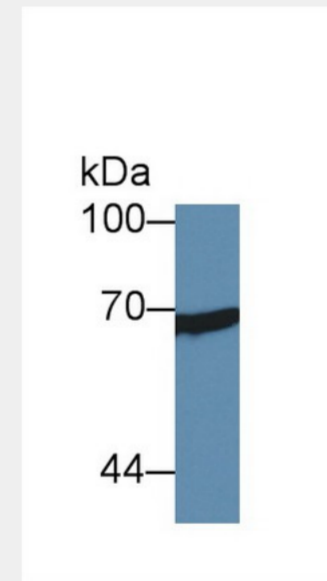


Figure. Western Blot; Sample: Recombinant protein.)



Western Blot; Sample: Human MCF7 cell lysate;
Primary Ab: 3µg/ml Rabbit Anti-Mouse XRCC6 Antibody
Second Ab: 0.2µg/mL HRP-Linked Caprine Anti-Rabbit IgG Polyclonal Antibody
(Catalog: SAA544Rb19)

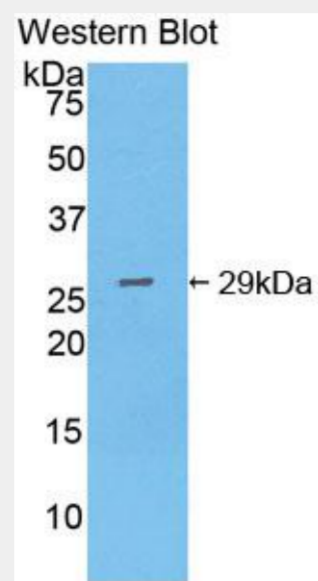
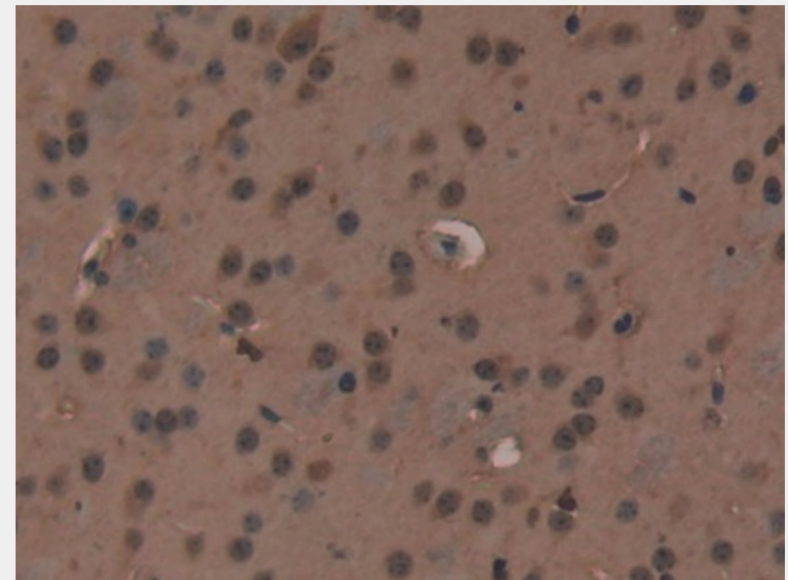
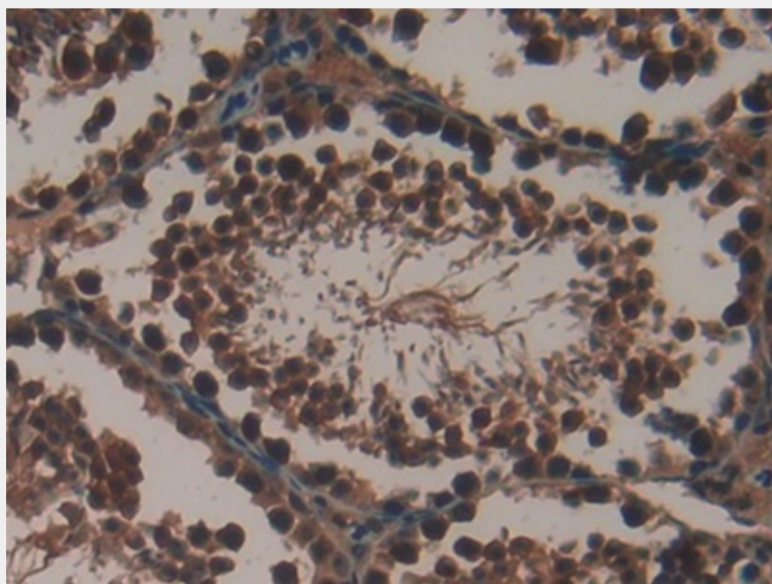


Figure. Western Blot; Sample: Recombinant protein.)



DAB staining on IHC-P;
Samples: Mouse Heart Tissue)



Used in DAB staining on formalin fixed paraffin- embedded heart tissue)

All products are for RESEARCH USE ONLY. Not for diagnostic & therapeutic purposes!