

# Polyclonal Antibody to Sp100 Nuclear Antigen (Sp100)

Catalog No: tcua7097



## Available Sizes

---

**Size:** 20ul

**Size:** 100ul

**Size:** 200ul



## Specifications

---

**Application:**

WB; IHC; ICC; IP.

**Species Reactivity:**

Homo sapiens (Human)

**Host Species:**

Rabbit

**Immunogen / Amino acids:**

Recombinant Sp100 Nuclear Antigen (Sp100)

**Conjugation:**

Unconjugated

**Clonality:**

Polyclonal

**Form:**

Liquid

**Storage Buffer:**

0.01M PBS, pH7.4, containing 0.05% Proclin-300, 50% glycerol.

**Recommended Dilution:**

Western blotting: 1-5ug/ml

Immunocytochemistry in formalin fixed cells: 5-20ug/ml  
Immunohistochemistry in formalin fixed frozen section: 5-20ug/ml  
Immunohistochemistry in paraffin section: 5-20ug/ml  
Enzyme-linked Im

**Alternative Names:**

Speckled 100 kDa; Nuclear dot-associated Sp100 protein

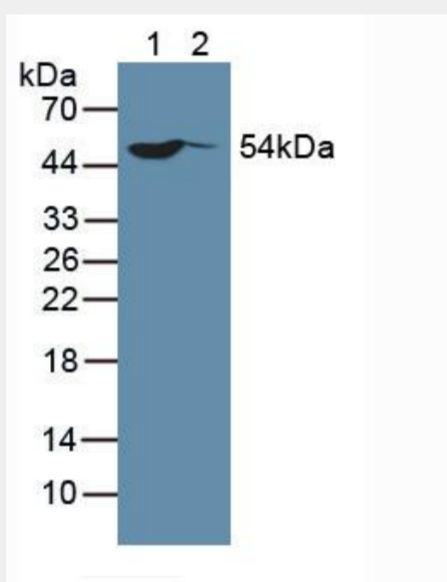


Figure. Western Blot; Sample: Lane1: Human HeLa Cells; Lane2: Human MCF-7 Cells.)

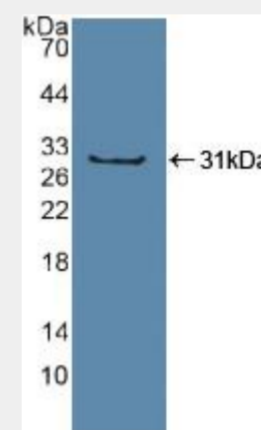


Figure. Western Blot; Sample: Recombinant Sp100, Human.)

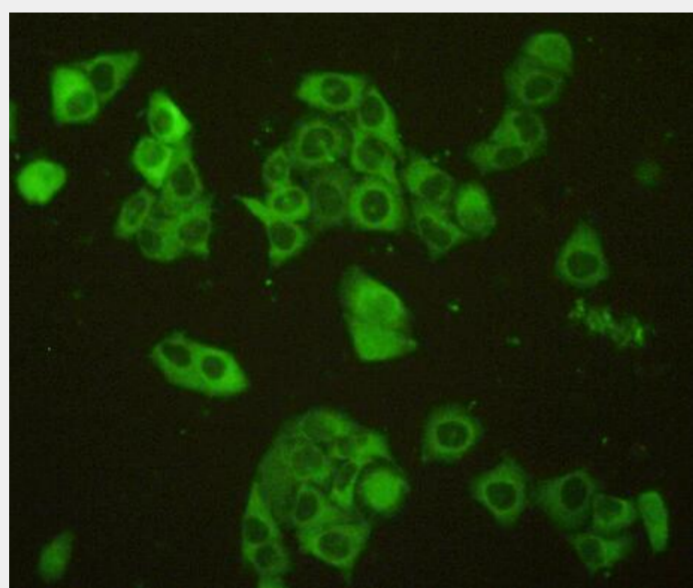


Figure:FITC staining on IHC-P  
Simple: MCF7 cells)

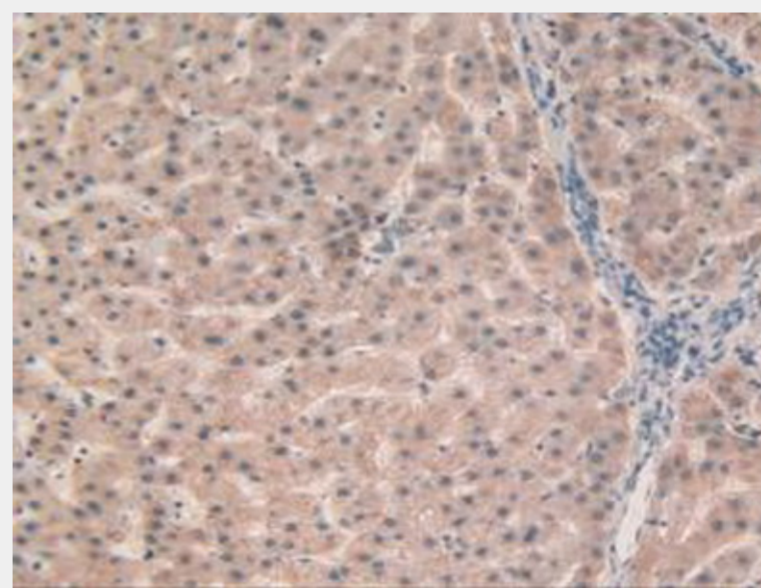


Figure. DAB staining on IHC-P;  
Samples: Human Liver Cancer Tissue.)

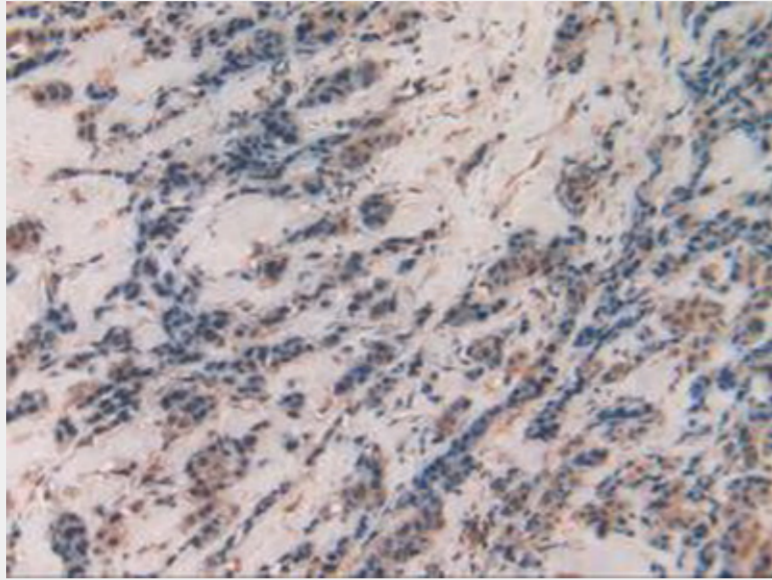


Figure. DAB staining on IHC-P;  
Samples: Human Breast Cancer Tissue.)

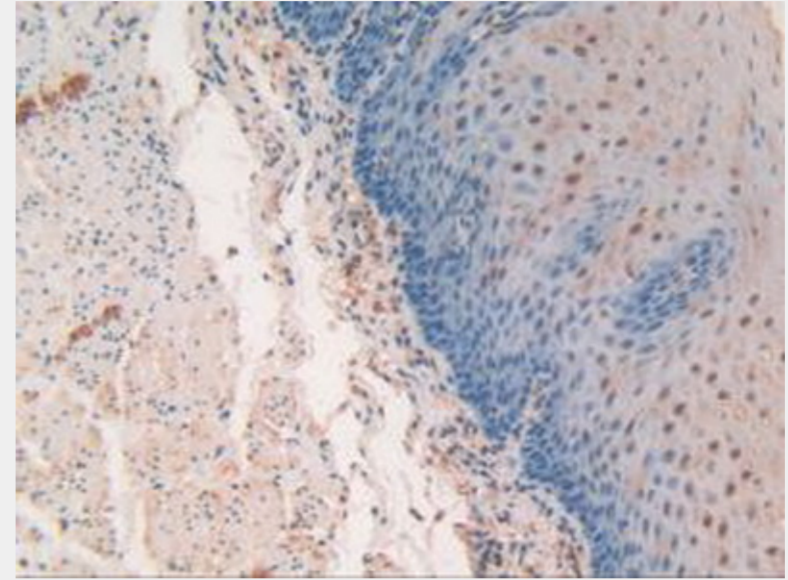


Figure. DAB staining on IHC-P;  
Samples: Human Esophagus Cancer Tissue.)

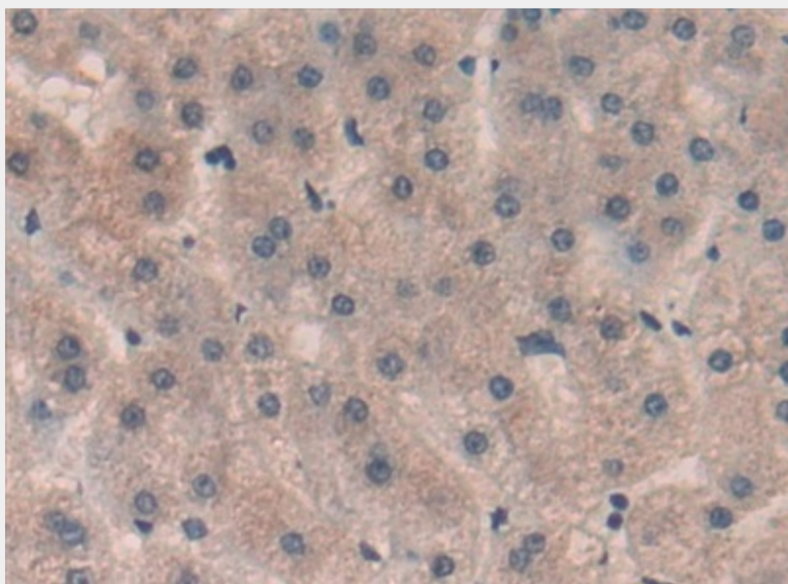


Figure. DAB staining on IHC-P; Samples: Human Liver Tissue.)

All products are for RESEARCH USE ONLY. Not for diagnostic & therapeutic purposes!