

# Polyclonal Antibody to Matrix Metalloproteinase 12 (MMP12)

Catalog No: tcua6957



## Available Sizes

---

**Size:** 20ul

**Size:** 100ul

**Size:** 200ul



## Specifications

---

**Application:**

WB; ICC; IHC-P; IHC-F; ELISA.

**Species Reactivity:**

Homo sapiens (Human)

**Host Species:**

Rabbit

**Immunogen / Amino acids:**

Recombinant Matrix Metalloproteinase 12 (MMP12)

**Conjugation:**

Unconjugated

**Clonality:**

Polyclonal

**Form:**

Liquid

**Storage Buffer:**

0.01M PBS, pH7.4, containing 0.05% Proclin-300, 50% glycerol.

**Recommended Dilution:**

Western blotting: 1-5 $\mu$ g/mL

Immunocytochemistry in formalin fixed cells: 5-20 $\mu$ g/mL

Immunohistochemistry in formalin fixed frozen section: 5-20 $\mu$ g/mL

Immunohistochemistry in paraffin section: 5-20 $\mu$ g/mL

Enzyme-linked Im

**Alternative Names:**

MME; HME; ME; Macrophage Metalloelastase; Macrophage Elastase

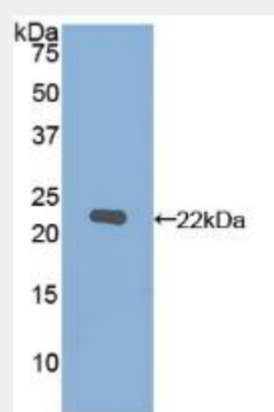


Figure. Western Blot; Sample: Recombinant MMP12, Human.)

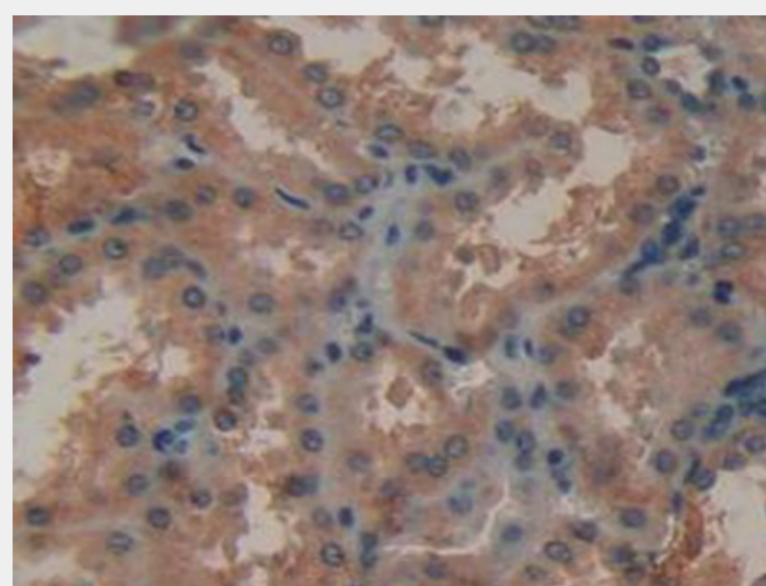


Figure. DAB staining on IHC-P;  
Samples: Human Kidney Tissue.)

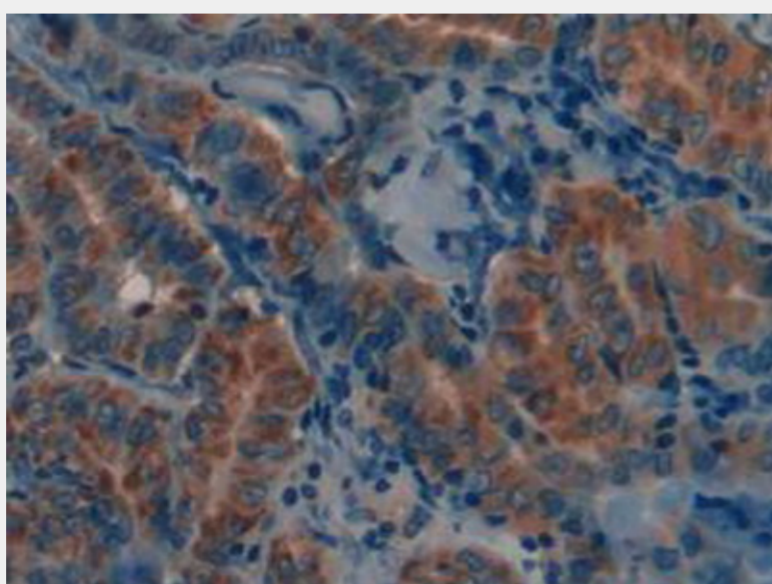


Figure. DAB staining on IHC-P;  
Samples: Human Thyroid Cancer Tissue.)

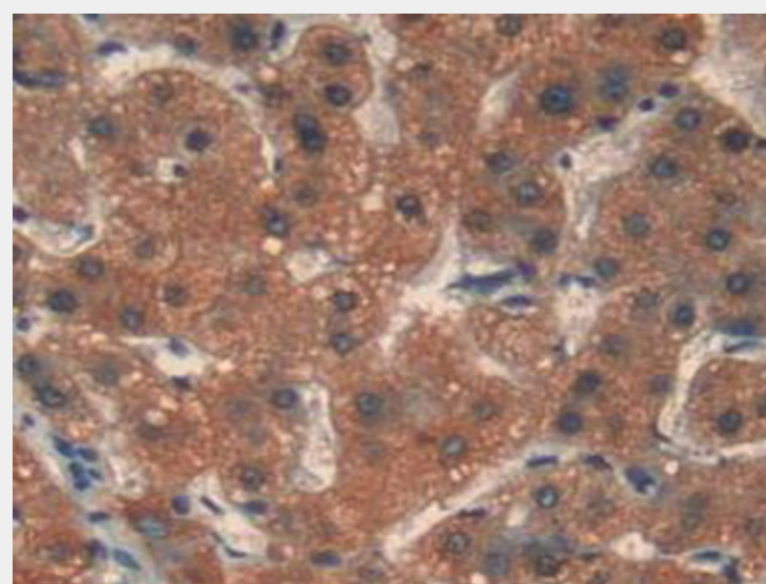


Figure. DAB staining on IHC-P;  
Samples: Human Liver Tissue.)

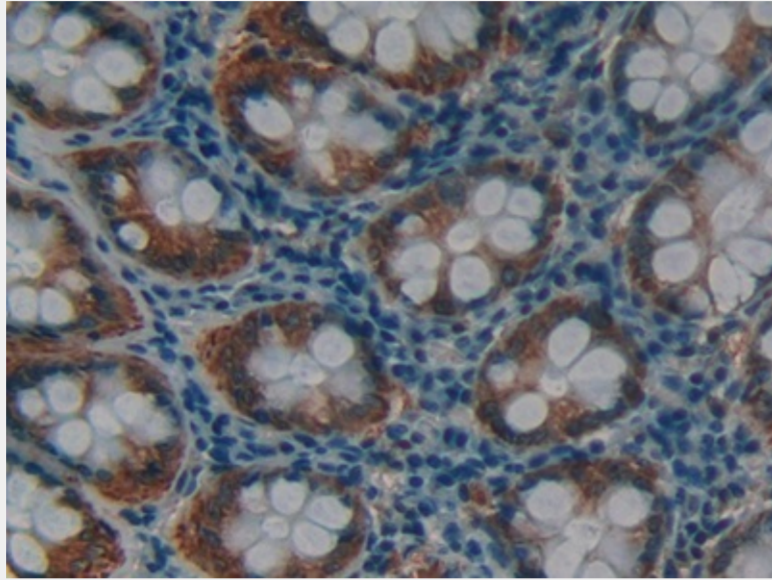


Figure. DAB staining on IHC-P; Samples: Human Rectum Tissue.)

All products are for RESEARCH USE ONLY. Not for diagnostic & therapeutic purposes!