

Polyclonal Antibody to Lymphotoxin Beta Receptor (LTbR)

Catalog No: tcua6819



Available Sizes

Size: 20ul

Size: 100ul

Size: 200ul



Specifications

Application:

WB; ICC; IHC-P; IHC-F; ELISA.

Species Reactivity:

Homo sapiens (Human)

Host Species:

Rabbit

Immunogen / Amino acids:

Recombinant Lymphotoxin Beta Receptor (LTbR)

Conjugation:

Unconjugated

Clonality:

Polyclonal

Form:

Liquid

Storage Buffer:

0.01M PBS, pH7.4, containing 0.05% Proclin-300, 50% glycerol.

Recommended Dilution:

Western blotting: 1-5µg/mL

Immunocytochemistry in formalin fixed cells: 5-20µg/mL

Immunohistochemistry in formalin fixed frozen section: 5-20µg/mL

Immunohistochemistry in paraffin section: 5-20µg/mL

Enzyme-linked Im

Alternative Names:

TNFCR; TNFR-RP; TNFR-III; TNFR2-RP; TNFRSF3; Tumor Necrosis Factor Superfamily Member 3; Tumor necrosis factor C receptor; Tumor necrosis factor receptor type III

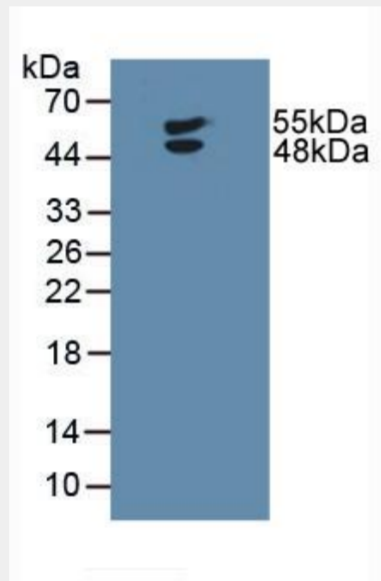
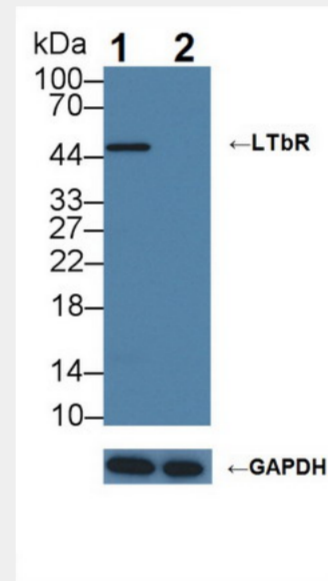


Figure. Western Blot; Sample: Human U-87MG Cells.)



Knockout Varification: Lane 1: Wild-type U87MG cell lysate; Lane 2: LTbR knockout U87MG cell lysate; Predicted MW: 45,47kDa Observed MW: 47kDa Primary Ab: 3µg/ml Rabbit Anti-Human LTbR Antibody Second Ab: 0.2µg/mL HRP-Linked Caprine Anti-Rabbit IgG Polyclonal Antibody Catalog: SAA544Rb19)

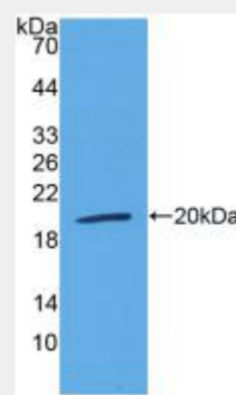


Figure. Western Blot; Sample: Recombinant LTbR, Human.)

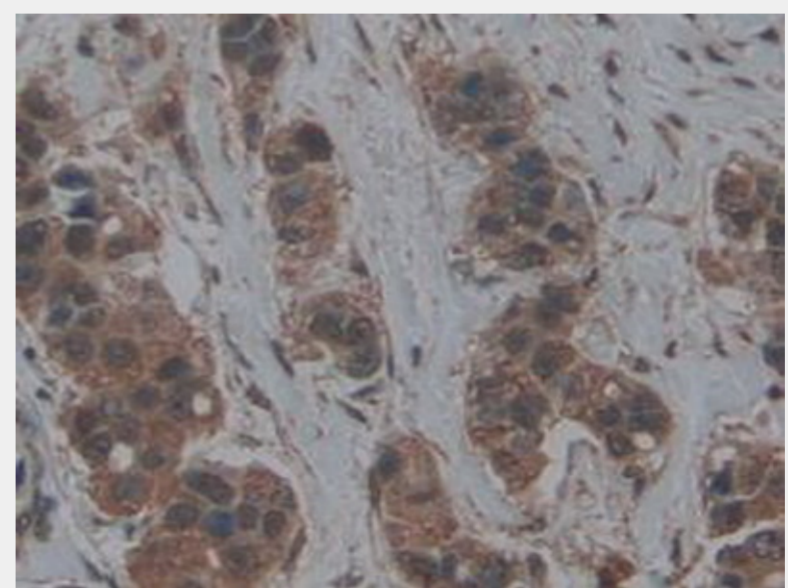


Figure. DAB staining on IHC-P; Samples: Human Breast Cancer Tissue.)

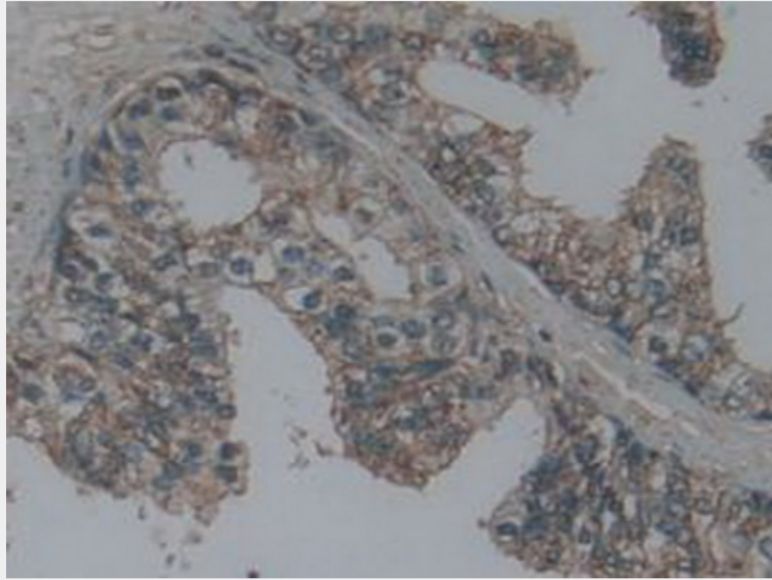


Figure. DAB staining on IHC-P;
Samples: Human Prostate Gland Tissue.)

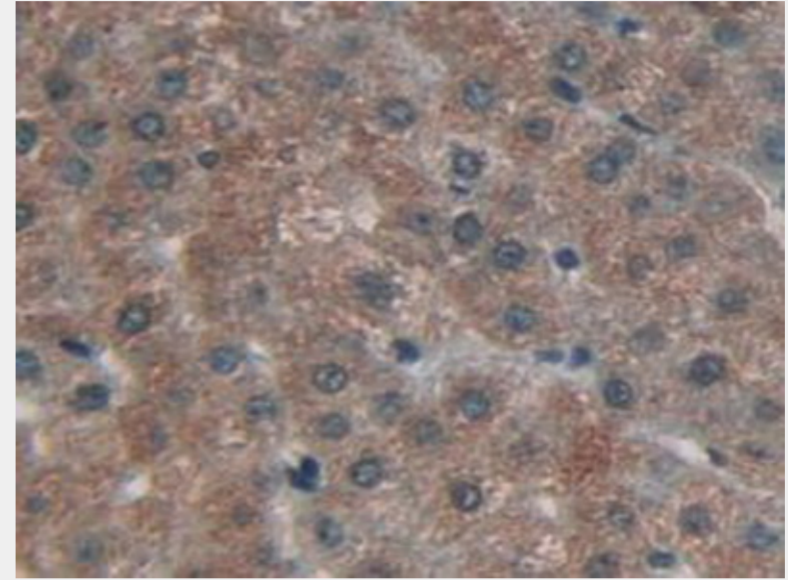


Figure. DAB staining on IHC-P;
Samples: Human Liver Tissue.)

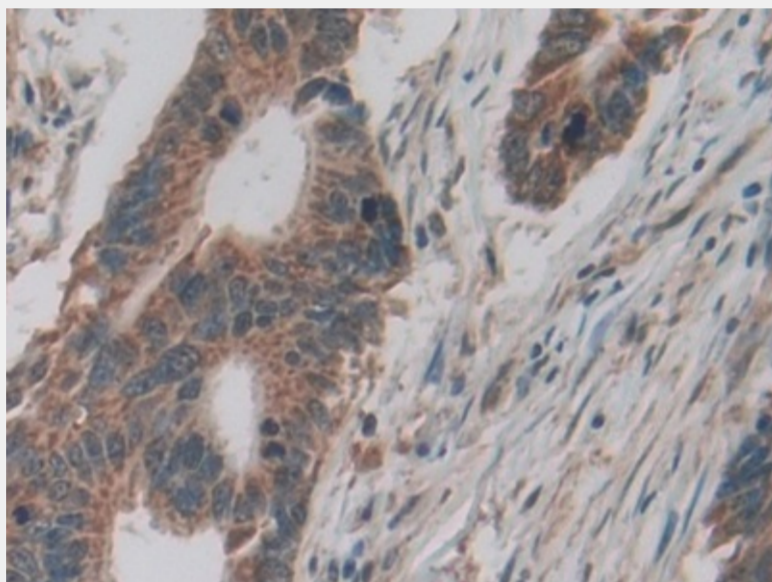


Figure. DAB staining on IHC-P; Samples: Human Rectum Cancer Tissue.)

All products are for RESEARCH USE ONLY. Not for diagnostic & therapeutic purposes!