

Polyclonal Antibody to Protein Kinase C Iota (PKCi)

Catalog No: tcua6792



Available Sizes

Size: 20ul

Size: 100ul

Size: 200ul



Specifications

Application:

WB; IHC; ICC; IP.

Species Reactivity:

Homo sapiens (Human)

Host Species:

Rabbit

Immunogen / Amino acids:

Recombinant Protein Kinase C Iota (PKCi)

Conjugation:

Unconjugated

Clonality:

Polyclonal

Form:

Liquid

Storage Buffer:

0.01M PBS, pH7.4, containing 0.05% Proclin-300, 50% glycerol.

Recommended Dilution:

Western blotting: 1-5ug/ml

Immunocytochemistry in formalin fixed cells: 5-20ug/ml
Immunohistochemistry in formalin fixed frozen section: 5-20ug/ml
Immunohistochemistry in paraffin section: 5-20ug/ml
Enzyme-linked Im

Alternative Names:

PKC-I; PRKCI; PRKC-I; NPKC-Iota; Atypical protein kinase C-lambda/iota

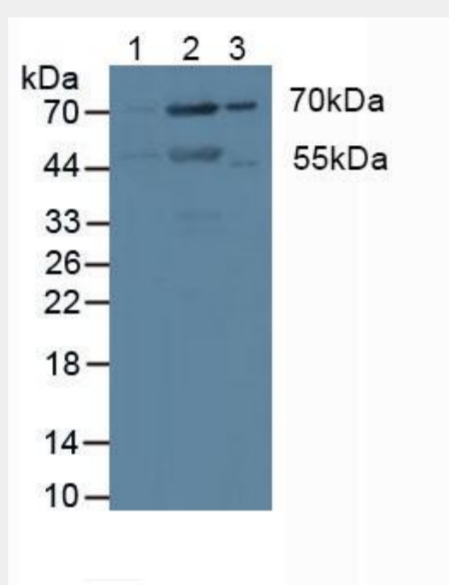


Figure. Western Blot; Sample: Lane1: Human HeLa Cells; Lane2: Human MCF7 Cells.)

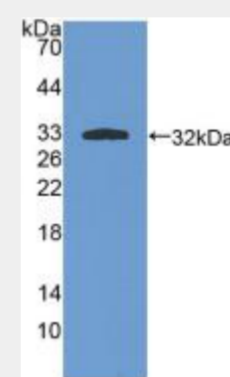


Figure. Western Blot; Sample: Recombinant PKCi, Human.)

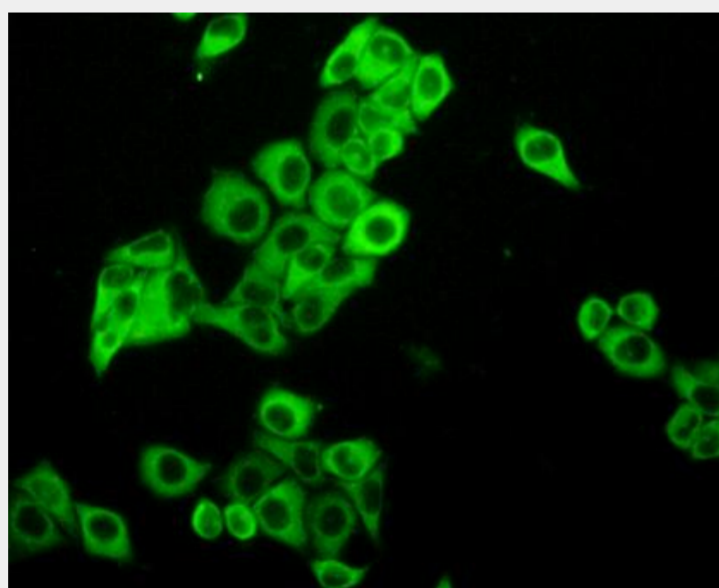


Figure:FITC staining on IHC-P
Simple: MCF7 cells)

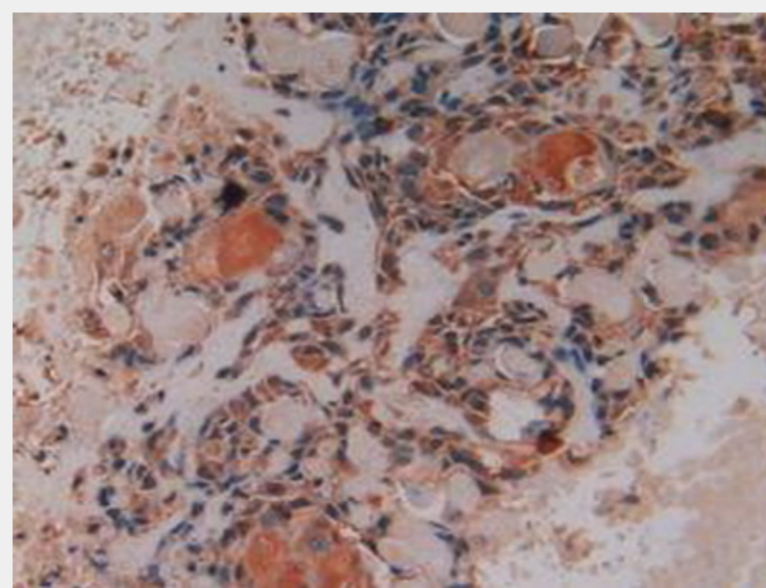


Figure. DAB staining on IHC-P;
Samples: Human Lung Cancer Tissue.)

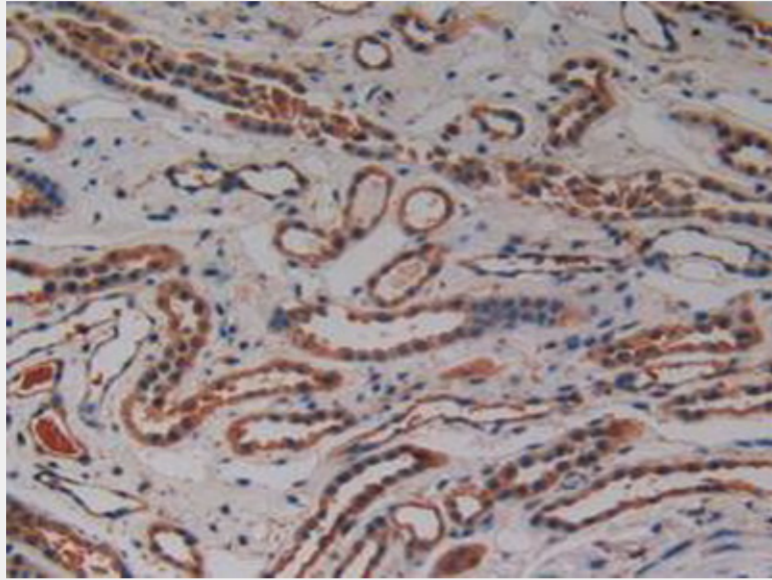


Figure. DAB staining on IHC-P;
Samples: Human Kidney Tissue.)

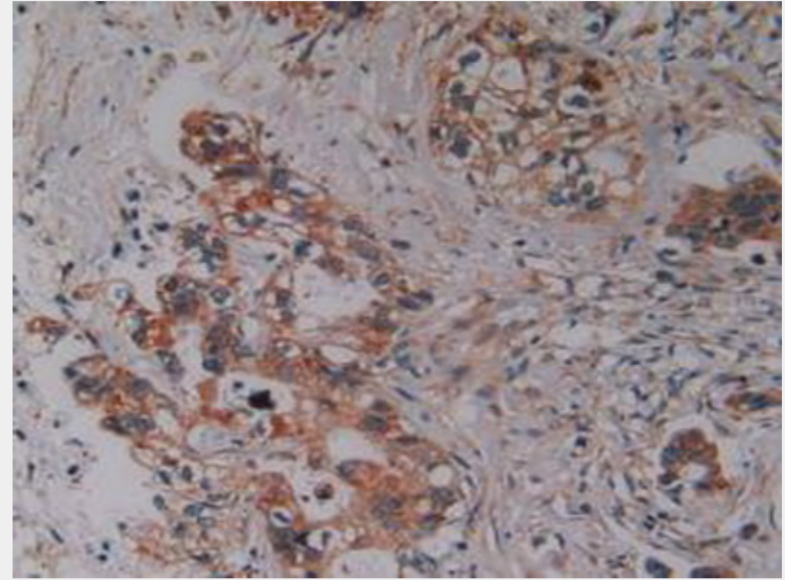


Figure. DAB staining on IHC-P;
Samples: Human Pancreas Cancer Tissue.)

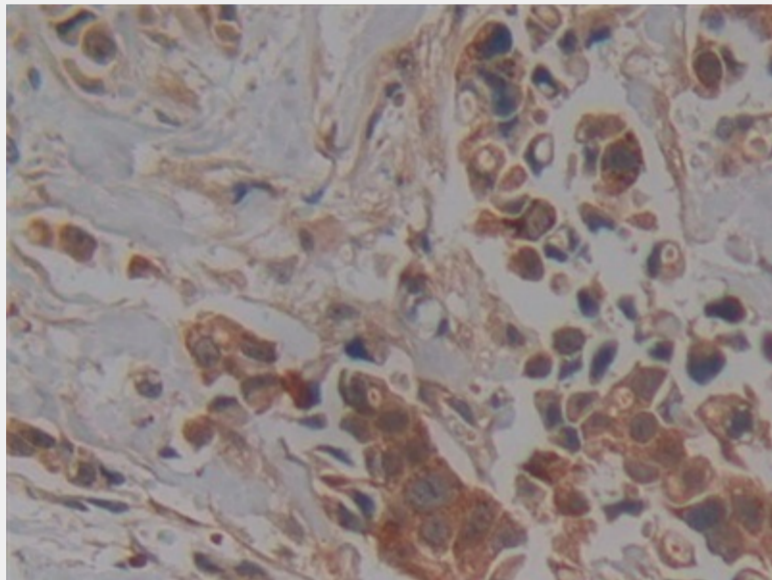


Figure. DAB staining on IHC-P; Samples: Human Breast Cancer Tissue.)

All products are for RESEARCH USE ONLY. Not for diagnostic & therapeutic purposes!