

MCM4 Polyclonal Antibody

Catalog No: tcba7965



Available Sizes

Size: 50ul

Size: 100ul

Size: 200ul



Specifications

Application:

WB,IHC

Research Area:

,

Species Reactivity:

Human,Mouse,Rat

Host Species:

Rabbit

Isotype:

IgG

Form:

Liquid

Storage Buffer:

Buffer: PBS with 0.02% sodium azide, 50% glycerol, pH7.3.

Recommended Dilution:

WB 1:500 - 1:2000

IHC 1:50 - 1:200

Storage Instruction:

Store at -20°C. Avoid freeze / thaw cycles.

Alternative Names:

CDC21;CDC54;hCdc21;NKCD;NKGCD;P1-CDC21

SwissProt:

P33991

Gene ID:

4173 (human);

Calculated Molecular Weight:

96kDa

Purification:

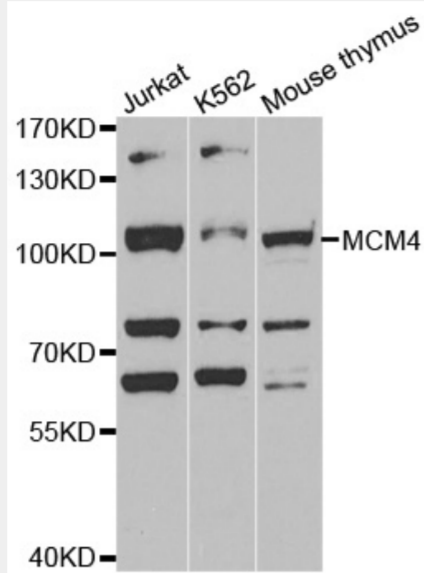
Affinity purification

Cellular Location:

Nucleus,

Product Description

The protein encoded by this gene is one of the highly conserved mini-chromosome maintenance proteins (MCM) that are essential for the initiation of eukaryotic genome replication. The hexameric protein complex formed by MCM proteins is a key component of the pre-replication complex (pre_RC) and may be involved in the formation of replication forks and in the recruitment of other DNA replication related proteins. The MCM complex consisting of this protein and MCM2, 6 and 7 proteins possesses DNA helicase activity, and may act as a DNA unwinding enzyme. The phosphorylation of this protein by CDC2 kinase reduces the DNA helicase activity and chromatin binding of the MCM complex. This gene is mapped to a region on the chromosome 8 head-to-head next to the PRKDC/DNA-PK, a DNA-activated protein kinase involved in the repair of DNA double-strand breaks. Alternatively spliced transcript variants encoding the same protein have been reported.



Western blot analysis of extracts of various cell lines, using MCM4 antibody at 1:400 dilution.

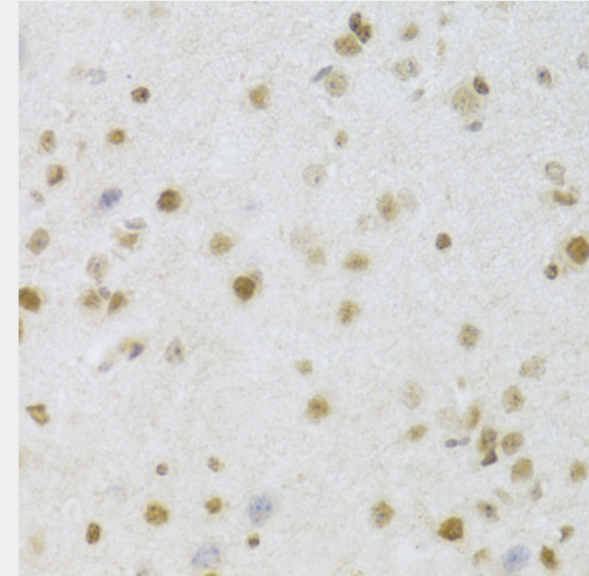
Secondary antibody: HRP Goat Anti-Rabbit IgG (H+L) at 1:10000 dilution.

Lysates/proteins: 25ug per lane.

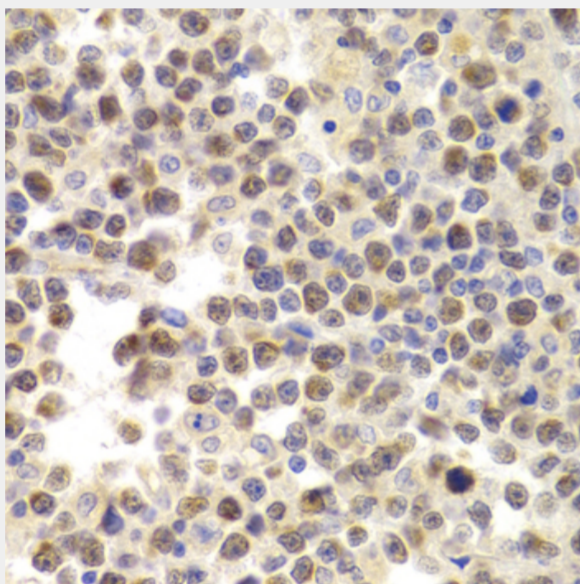
Blocking buffer: 3% nonfat dry milk in TBST.

Detection: ECL Basic Kit.

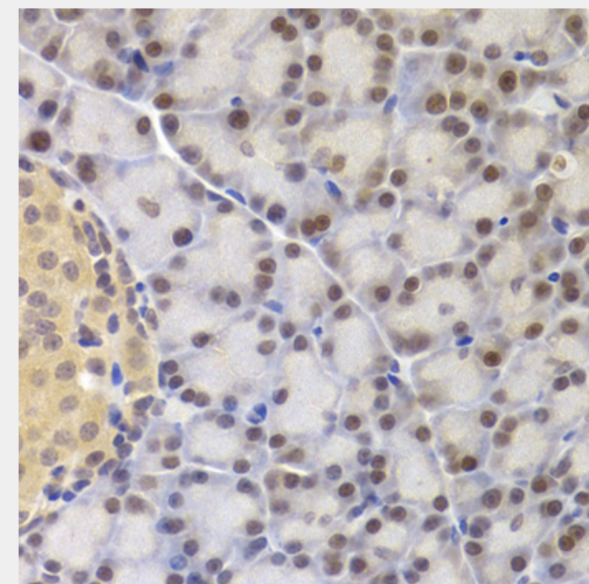
Exposure time: 90s.



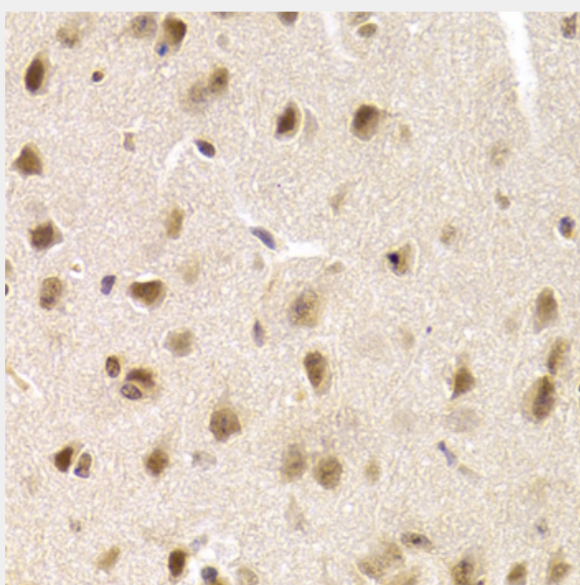
Immunohistochemistry of paraffin-embedded mouse brain using MCM4 Antibody at dilution of 1:100 (40x lens).



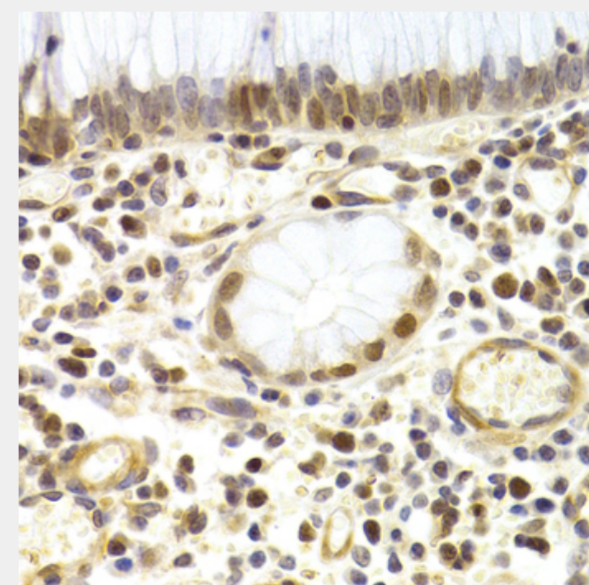
Immunohistochemistry of paraffin-embedded human B cell lymphoma using MCM4 Antibody at dilution of 1:200 (40x lens).



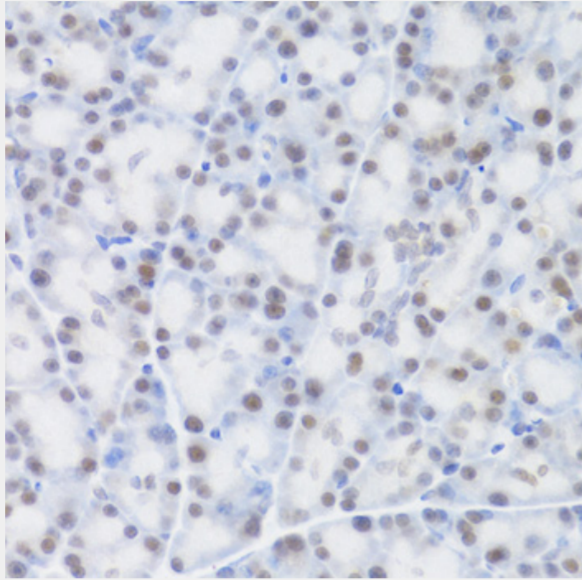
Immunohistochemistry of paraffin-embedded rat pancreas using MCM4 Antibody at dilution of 1:200 (40x lens).



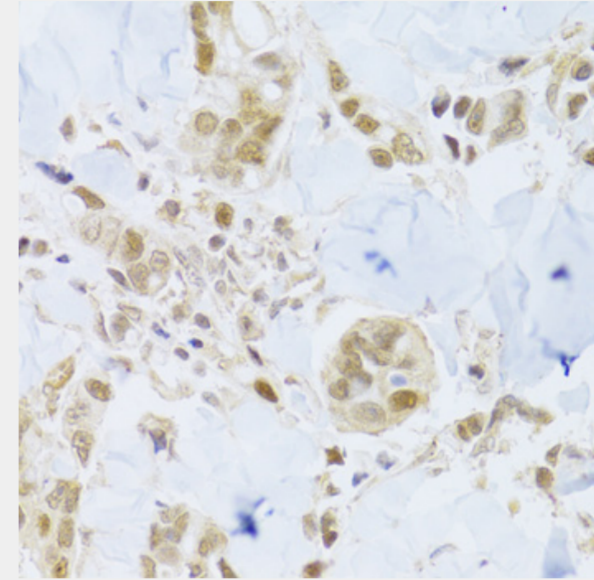
Immunohistochemistry of paraffin-embedded mouse brain using MCM4 Antibody at dilution of 1:200 (40x lens).



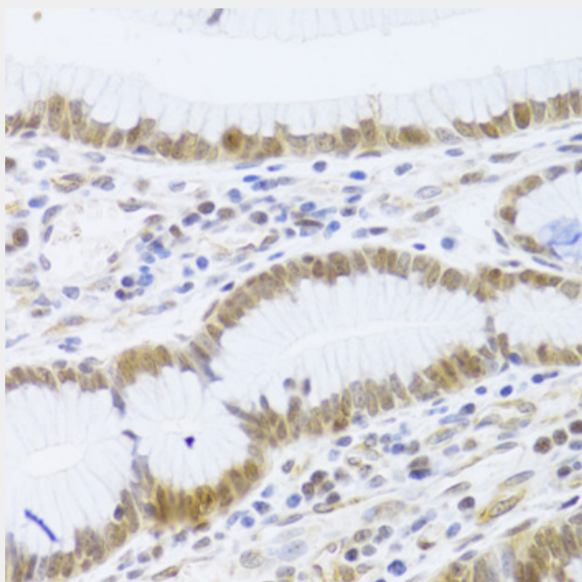
Immunohistochemistry of paraffin-embedded human gastric cancer using MCM4 Antibody at dilution of 1:200 (40x lens).



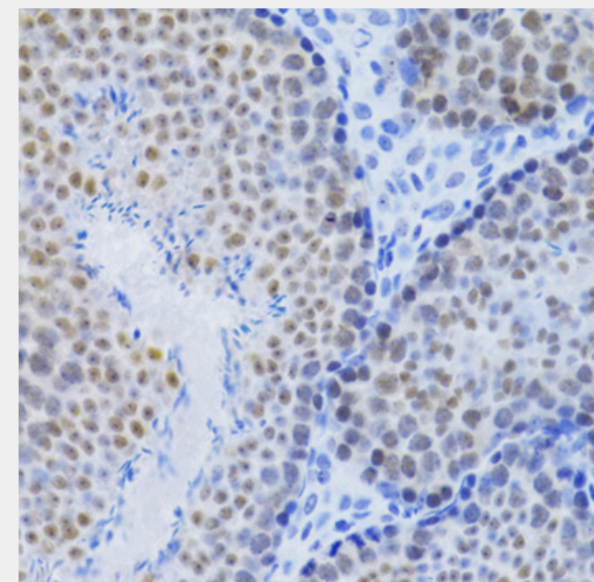
Immunohistochemistry of paraffin-embedded rat pancreas using MCM4 Antibody at dilution of 1:100 (40x lens).



Immunohistochemistry of paraffin-embedded human breast cancer using MCM4 Antibody at dilution of 1:100 (40x lens).



Immunohistochemistry of paraffin-embedded human gastric cancer using MCM4 Antibody at dilution of 1:100 (40x lens).



Immunohistochemistry of paraffin-embedded mouse testis using MCM4 Antibody at dilution of 1:100 (40x lens).

All products are for RESEARCH USE ONLY. Not for diagnostic & therapeutic purposes!