

S100A4 Polyclonal Antibody

Catalog No: tcba6493

KO VALIDATED



Available Sizes

Size: 50ul

Size: 100ul

Size: 200ul



Specifications

Application:

WB,IHC,IF

Research Area:

Cancer,Cardiovascular,Calcium pathway,RNA Binding Protein(RBP),

Species Reactivity:

Human,Mouse,Rat

Host Species:

Rabbit

Isotype:

IgG

Form:

Liquid

Storage Buffer:

Buffer: PBS with 0.02% sodium azide, 50% glycerol, pH7.3.

Recommended Dilution:

WB 1:500 - 1:2000

IHC 1:50 - 1:200

IF 1:50 - 1:200

Storage Instruction:

Store at -20°C. Avoid freeze / thaw cycles.

Alternative Names:

18A2;42A;CAPL;FSP1;MTS1;P9KA;PEL98

SwissProt:

P26447

Gene ID:

6275 (human);

Calculated Molecular Weight:

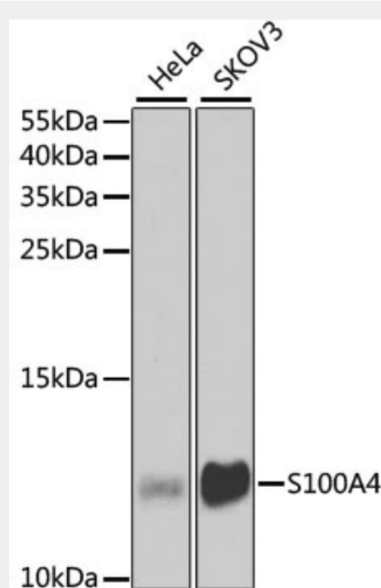
11kDa

Purification:

Affinity purification

Product Description

The protein encoded by this gene is a member of the S100 family of proteins containing 2 EF-hand calcium-binding motifs. S100 proteins are localized in the cytoplasm and/or nucleus of a wide range of cells, and involved in the regulation of a number of cellular processes such as cell cycle progression and differentiation. S100 genes include at least 13 members which are located as a cluster on chromosome 1q21. This protein may function in motility, invasion, and tubulin polymerization. Chromosomal rearrangements and altered expression of this gene have been implicated in tumor metastasis. Multiple alternatively spliced variants, encoding the same protein, have been identified.



Western blot analysis of extracts of various cell lines, using S100A4 antibody at 1:1000 dilution.

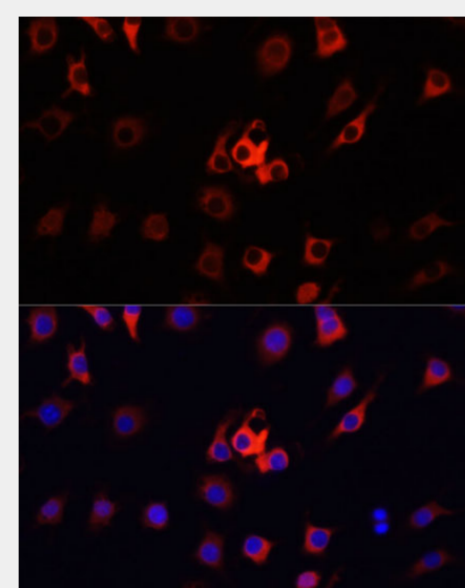
Secondary antibody: HRP Goat Anti-Rabbit IgG (H+L) at 1:10000 dilution.

Lysates/proteins: 25ug per lane.

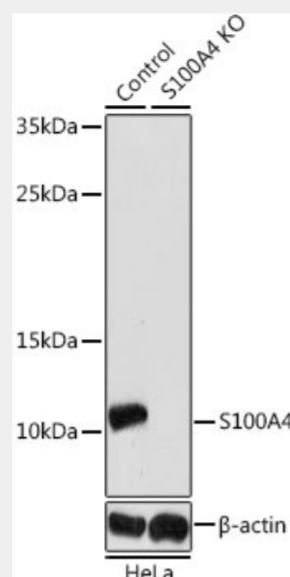
Blocking buffer: 3% nonfat dry milk in TBST.

Detection: ECL Basic Kit.

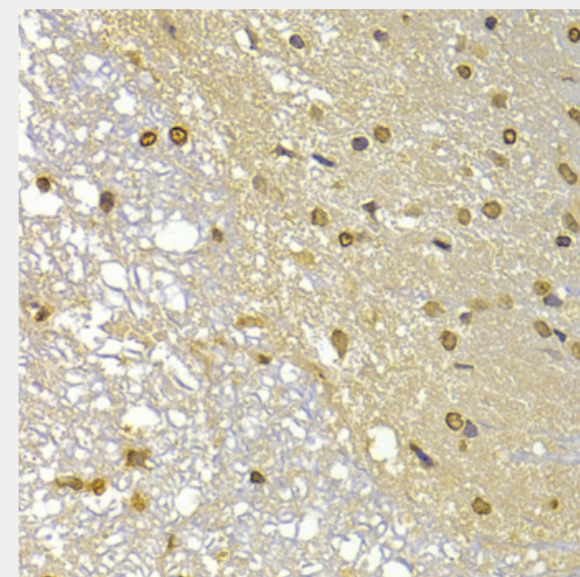
Exposure time: 90s.



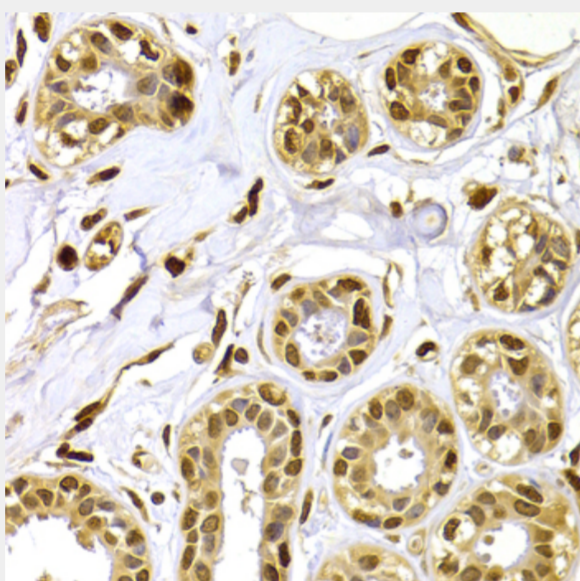
Immunofluorescence analysis of RAW264.7 cells using S100A4 antibody at dilution of 1:100. Blue: DAPI for nuclear staining.



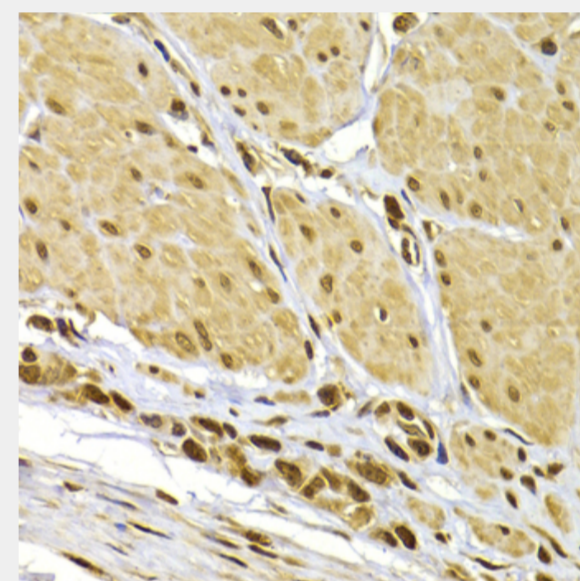
Western blot analysis of extracts from normal (control) and S100A4 knockout (KO) HeLa cells, using S100A4 antibody at 1:1000 dilution.
Secondary antibody: HRP Goat Anti-Rabbit IgG (H+L) at 1:10000 dilution.
Lysates/proteins: 25ug per lane.
Blocking buffer: 3% nonfat dry milk in TBST.
Detection: ECL Enhanced Kit.
Exposure time: 180s.



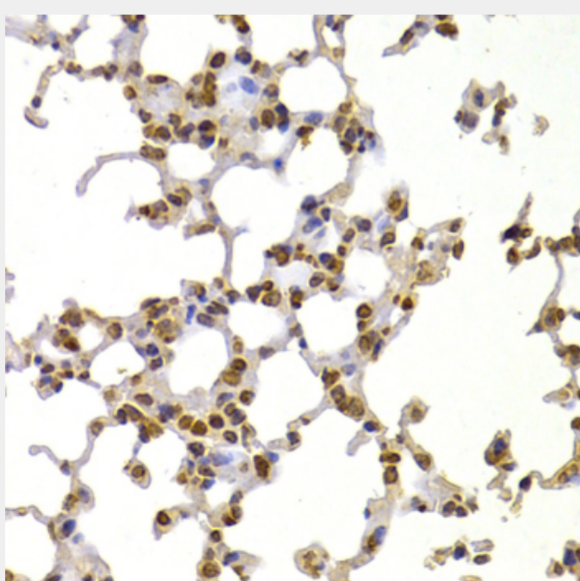
Immunohistochemistry of paraffin-embedded rat brain using S100A4 antibody at dilution of 1:100 (40x lens).



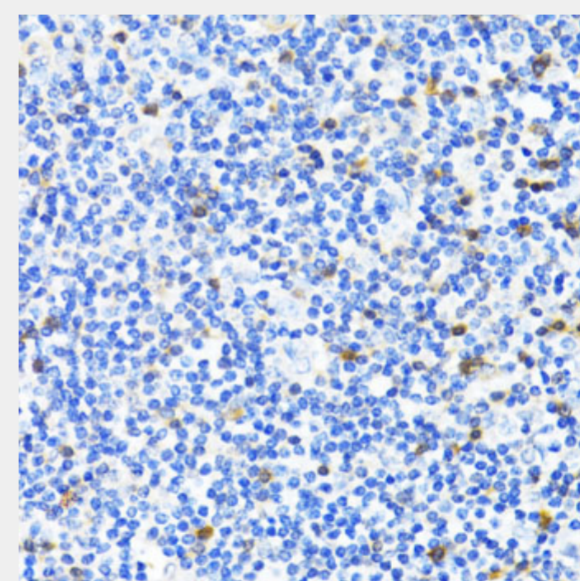
Immunohistochemistry of paraffin-embedded human mammary gland using S100A4 antibody at dilution of 1:100 (40x lens).



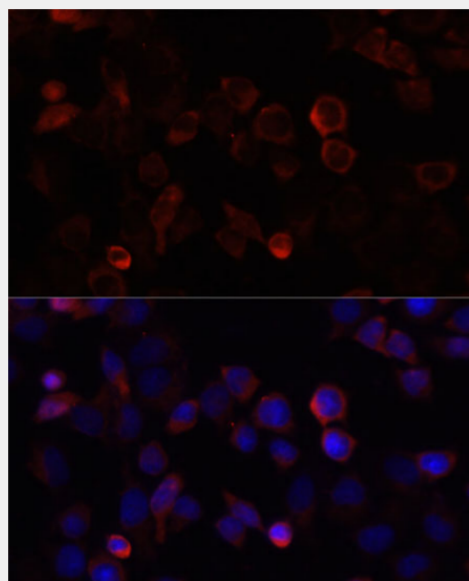
Immunohistochemistry of paraffin-embedded human gastric cancer using S100A4 antibody at dilution of 1:100 (40x lens).



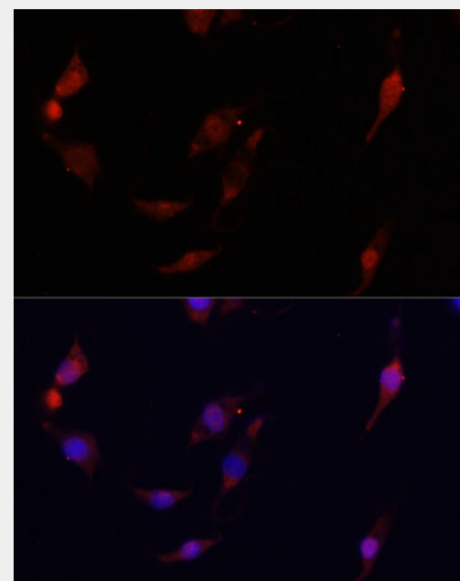
Immunohistochemistry of paraffin-embedded mouse lung using S100A4 antibody at dilution of 1:100 (40x lens).



Immunohistochemistry of paraffin-embedded human tonsil using S100A4 antibody at dilution of 1:100 (40x lens).



Immunofluorescence analysis of HeLa cells using S100A4 antibody at dilution of 1:100. Blue: DAPI for nuclear staining.



Immunofluorescence analysis of PC12 cells using S100A4 antibody at dilution of 1:100. Blue: DAPI for nuclear staining.

All products are for RESEARCH USE ONLY. Not for diagnostic & therapeutic purposes!