

TEAD1 Polyclonal Antibody

Catalog No: tcba3402



Available Sizes

Size: 50ul

Size: 100ul

Size: 200ul



Specifications

Application:

WB,IHC,IF,ChIP

Research Area:

Cancer,Hippo pathway,Cardiovascular,Developmental Biology,Epigenetics,

Species Reactivity:

Human,Mouse

Host Species:

Rabbit

Isotype:

IgG

Form:

Liquid

Storage Buffer:

Buffer: PBS with 0.02% sodium azide, 50% glycerol, pH7.3.

Recommended Dilution:

WB 1:500 - 1:2000

IHC 1:50 - 1:200

IF 1:50 - 1:200

CHIP 1:20 - 1:50

Storage Instruction:

Store at -20°C. Avoid freeze / thaw cycles.

Alternative Names:

AA;NTEF-1;REF1;TCF-13;TCF13;TEAD-1;TEF-1

SwissProt:

P28347

Gene ID:

7003 (human);

Calculated Molecular Weight:

40kDa/47kDa

Purification:

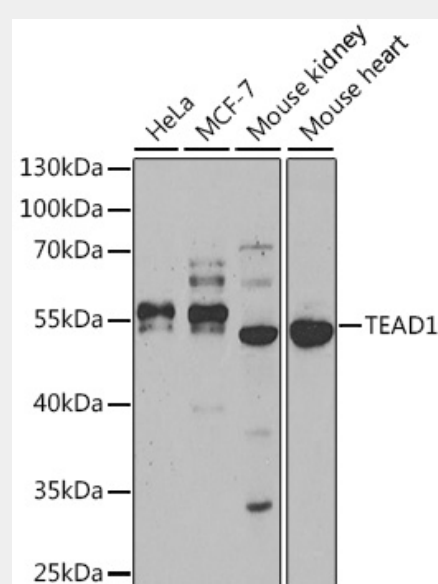
Affinity purification

Cellular Location:

Nucleus,

Product Description

This gene encodes a ubiquitous transcriptional enhancer factor that is a member of the TEA/ATTS domain family. This protein directs the transactivation of a wide variety of genes and, in placental cells, also acts as a transcriptional repressor. Mutations in this gene cause Sveinsson's chorioretinal atrophy. Additional transcript variants have been described but their full-length natures have not been experimentally verified.



Western blot analysis of extracts of various cell lines, using TEAD1 antibody at 1:1000 dilution.

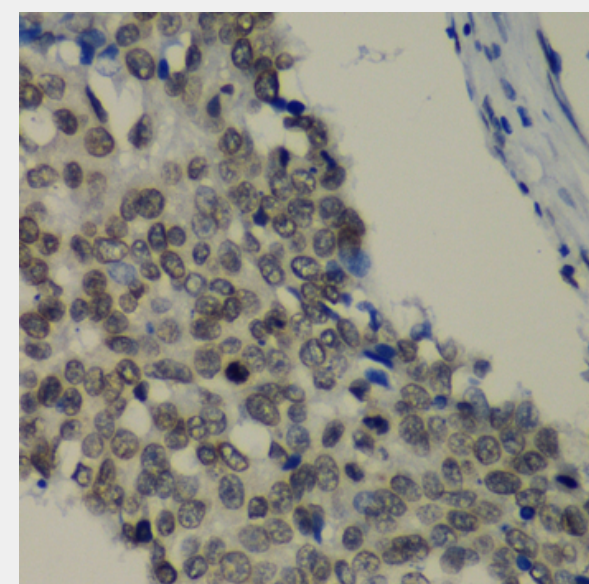
Secondary antibody: HRP Goat Anti-Rabbit IgG (H+L) at 1:10000 dilution.

Lysates/proteins: 25ug per lane.

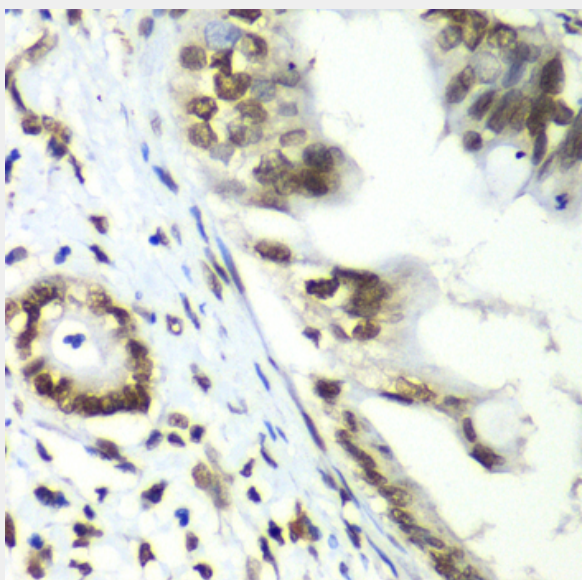
Blocking buffer: 3% nonfat dry milk in TBST.

Detection: ECL Basic Kit.

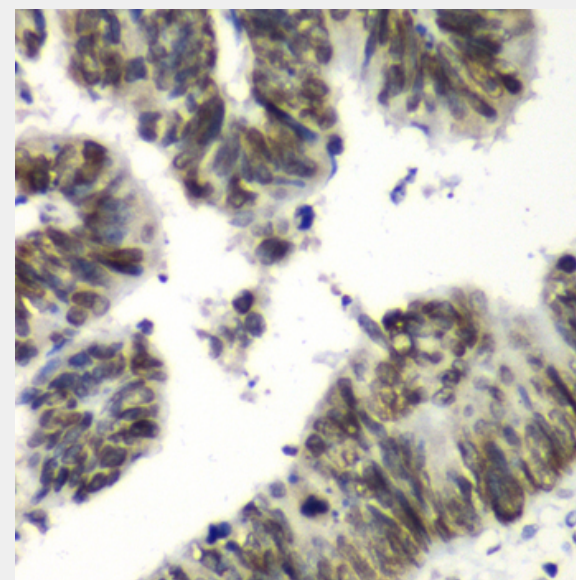
Exposure time: 120s.



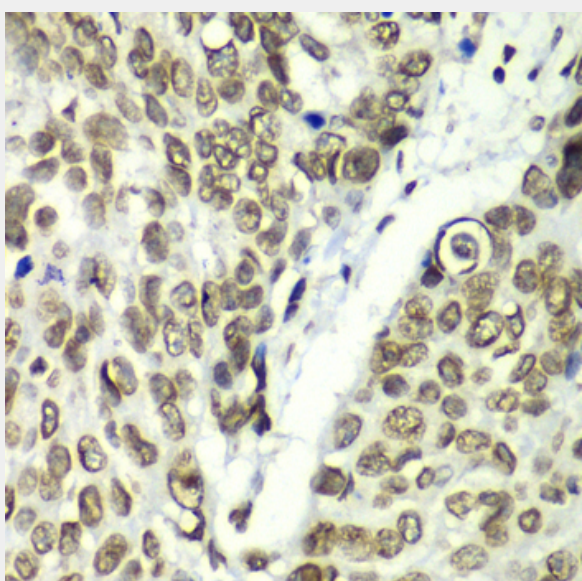
Immunohistochemistry of paraffin-embedded human lung cancer using TEAD1 antibody at dilution of 1:100 (40x lens).



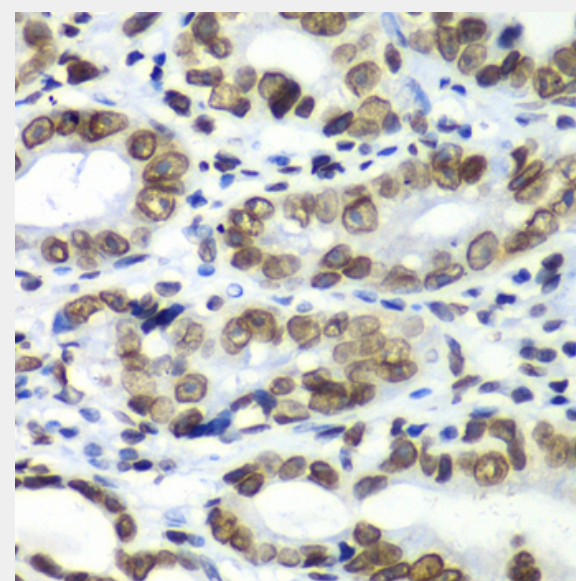
Immunohistochemistry of paraffin-embedded human liver cancer using TEAD1 antibody at dilution of 1:100 (40x lens).



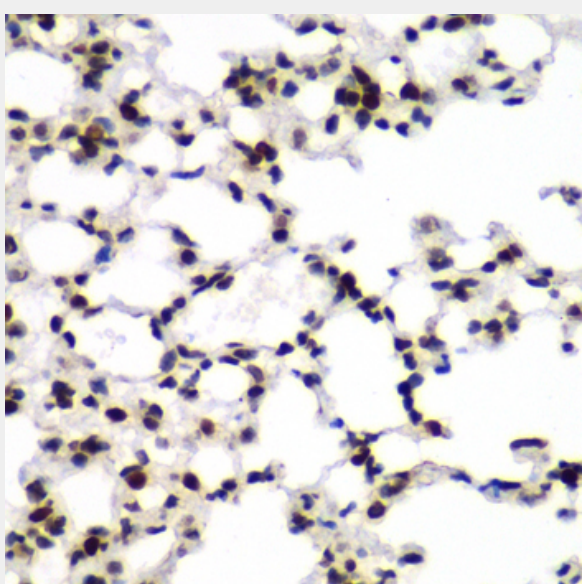
Immunohistochemistry of paraffin-embedded human colon carcinoma using TEAD1 antibody at dilution of 1:100 (40x lens).



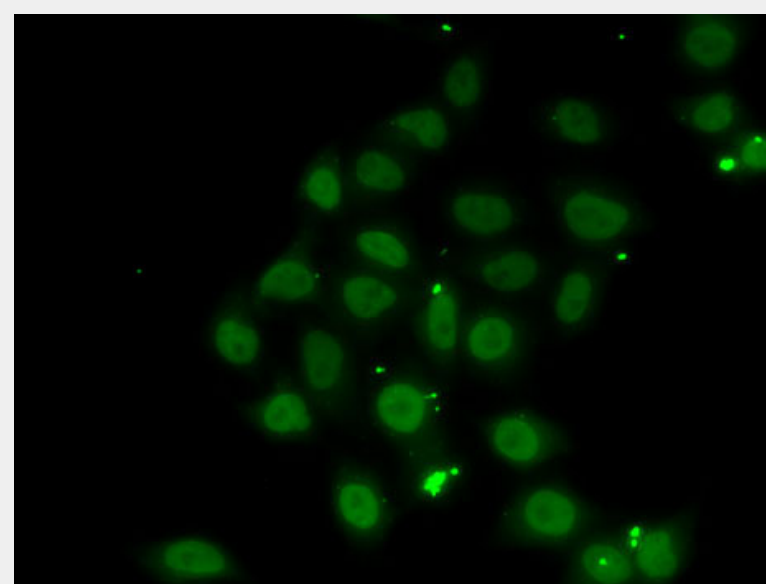
Immunohistochemistry of paraffin-embedded human esophageal cancer using TEAD1 antibody at dilution of 1:100 (40x lens).



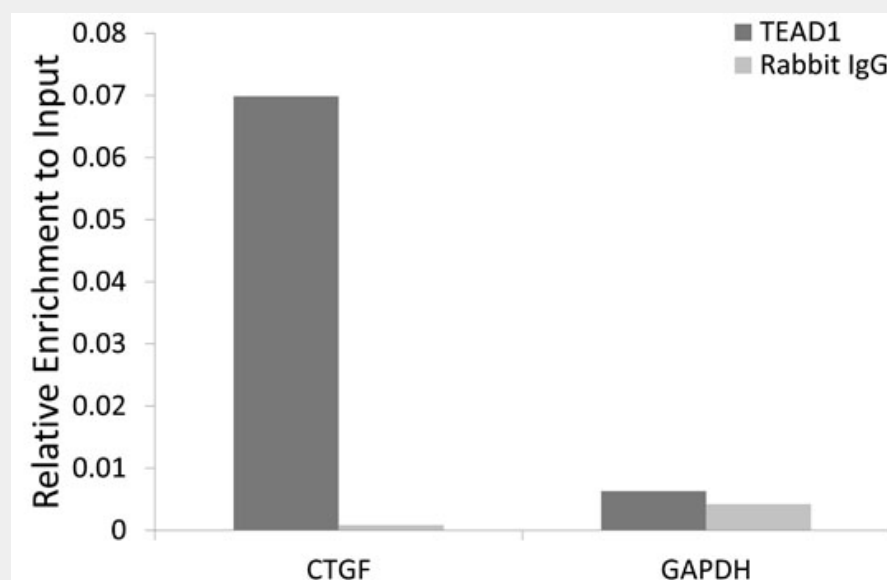
Immunohistochemistry of paraffin-embedded human gastric cancer using TEAD1 antibody at dilution of 1:100 (40x lens).



Immunohistochemistry of paraffin-embedded mouse lung using TEAD1 antibody at dilution of 1:100 (40x lens).



Immunofluorescence analysis of MCF7 cells using TEAD1 antibody.



Chromatin immunoprecipitation analysis extracts of HeLa cell line, using TEAD1 rabbit polyclonal antibody and rabbit IgG. The amount of immunoprecipitated DNA was checked by quantitative PCR. Histogram was constructed by the ratios of the immunoprecipitated DNA to the input.

All products are for RESEARCH USE ONLY. Not for diagnostic & therapeutic purposes!