

CREBBP Polyclonal Antibody

Catalog No: tcba3373



Available Sizes

Size: 50ul

Size: 100ul

Size: 200ul



Specifications

Application:

WB,IHC,IF

Research Area:

Cancer,Stem cells,Wnt pathway,Neuroscience,Developmental Biology,NF-κB pathway,Notch pathway,Neurodegeneration,TGF-β SMAD pathway,Epigenetics,

Species Reactivity:

Human,Mouse,Rat

Host Species:

Rabbit

Isotype:

IgG

Form:

Liquid

Storage Buffer:

Buffer: PBS with 0.02% sodium azide, 50% glycerol, pH7.3.

Recommended Dilution:

WB 1:500 - 1:2000

IHC 1:50 - 1:200

IF 1:50 - 1:200

Storage Instruction:

Store at -20°C. Avoid freeze / thaw cycles.

Alternative Names:

CBP;KAT3A;RSTS;CBP;KAT3A;RSTS;RSTS1

SwissProt:

Q92793

Gene ID:

1387 (human);

Calculated Molecular Weight:

260kDa/265kDa

Purification:

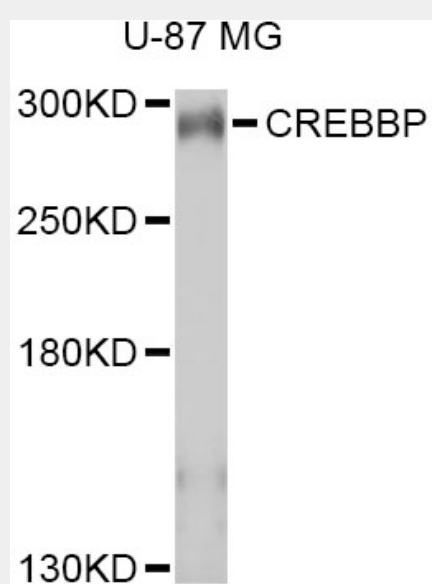
Affinity purification

Cellular Location:

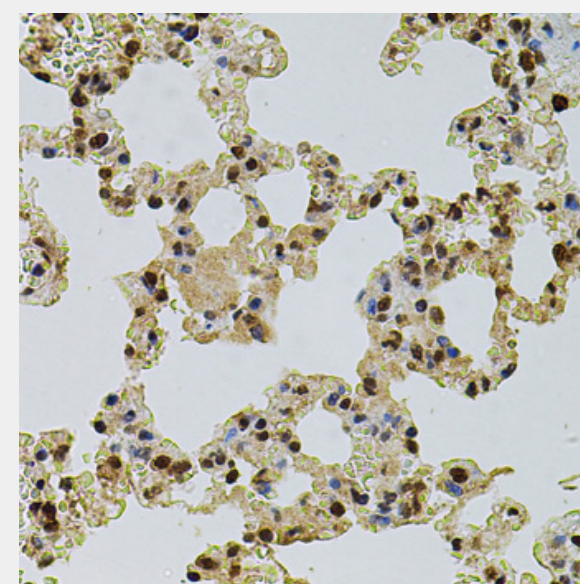
Cytoplasm,Nucleus,

Product Description

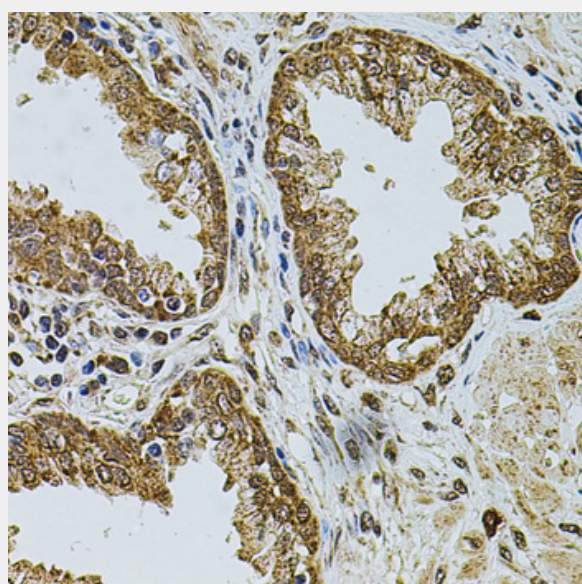
This gene is ubiquitously expressed and is involved in the transcriptional coactivation of many different transcription factors. First isolated as a nuclear protein that binds to cAMP-response element binding protein (CREB), this gene is now known to play critical roles in embryonic development, growth control, and homeostasis by coupling chromatin remodeling to transcription factor recognition. The protein encoded by this gene has intrinsic histone acetyltransferase activity and also acts as a scaffold to stabilize additional protein interactions with the transcription complex. This protein acetylates both histone and non-histone proteins. This protein shares regions of very high sequence similarity with protein p300 in its bromodomain, cysteine-histidine-rich regions, and histone acetyltransferase domain. Mutations in this gene cause Rubinstein-Taybi syndrome (RTS). Chromosomal translocations involving this gene have been associated with acute myeloid leukemia. Alternative splicing results in multiple transcript variants encoding different isoforms.



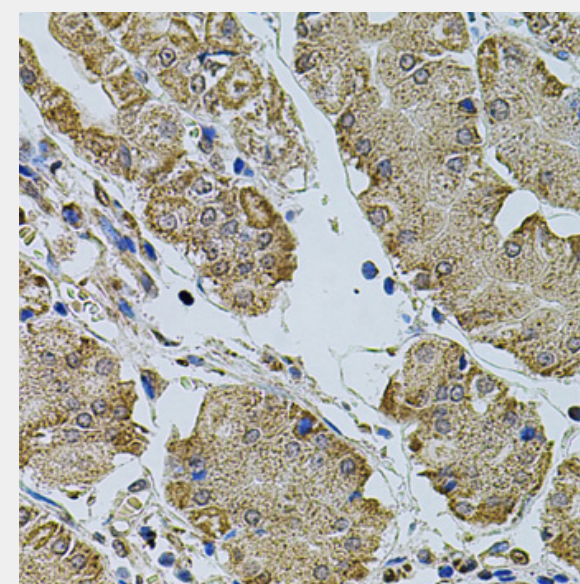
Western blot analysis of extracts of U-87MG cells, using CREBBP antibody at 1:1000 dilution.
Secondary antibody: HRP Goat Anti-Rabbit IgG (H+L) at 1:10000 dilution.
Lysates/proteins: 25ug per lane.
Blocking buffer: 3% nonfat dry milk in TBST.
Detection: ECL Enhanced Kit.
Exposure time: 30s.



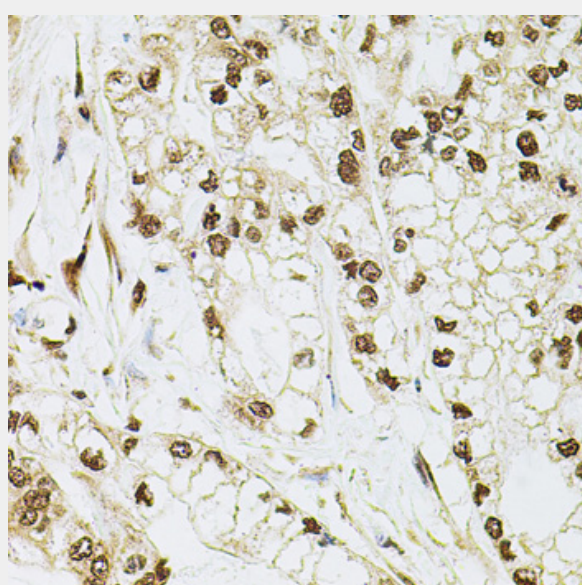
Immunohistochemistry of paraffin-embedded rat lung using CREBBP antibody at dilution of 1:100 (40x lens).



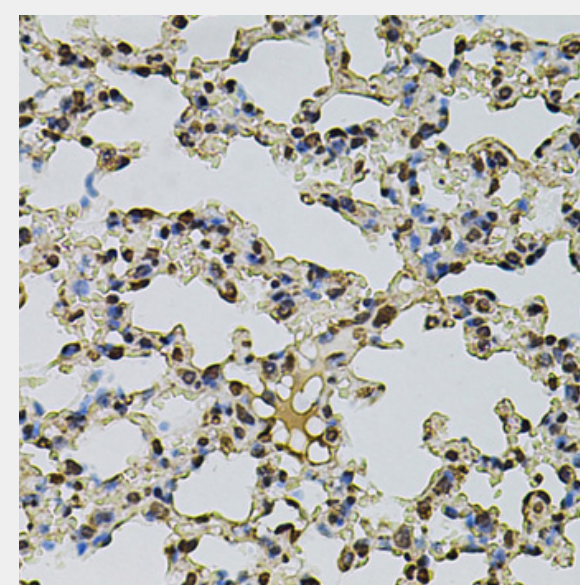
Immunohistochemistry of paraffin-embedded human prostate using CREBBP antibody at dilution of 1:100 (40x lens).



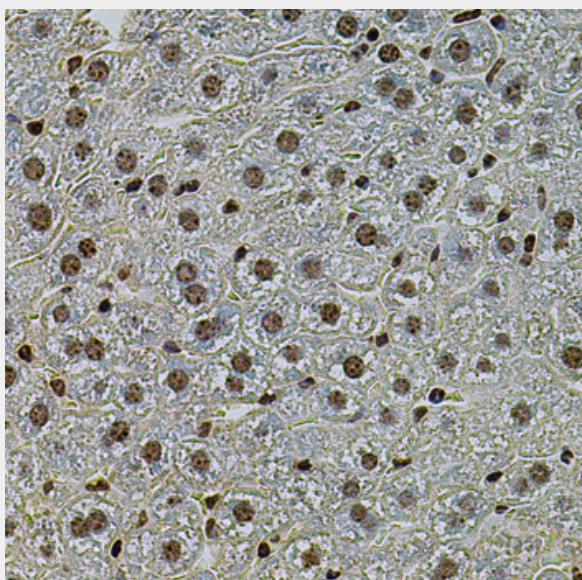
Immunohistochemistry of paraffin-embedded human stomach using CREBBP antibody at dilution of 1:100 (40x lens).



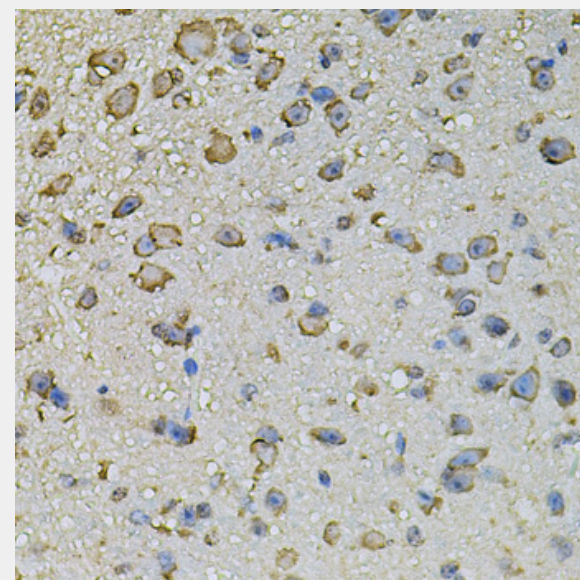
Immunohistochemistry of paraffin-embedded human gastric cancer using CREBBP antibody at dilution of 1:100 (40x lens).



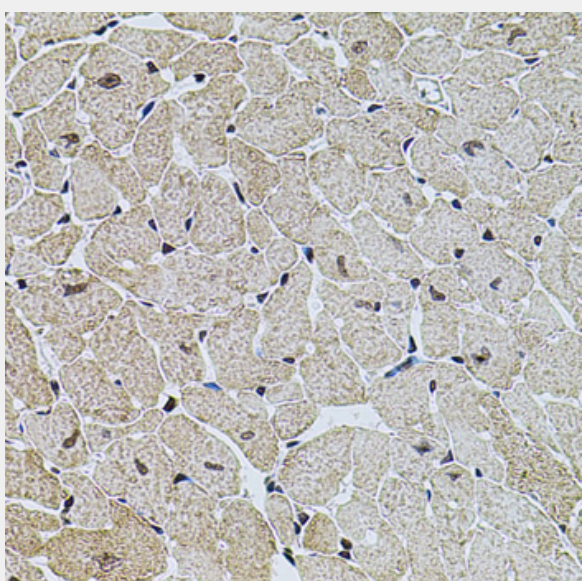
Immunohistochemistry of paraffin-embedded mouse lung using CREBBP antibody at dilution of 1:100 (40x lens).



Immunohistochemistry of paraffin-embedded mouse liver using CREBBP antibody at dilution of 1:100 (40x lens).



Immunohistochemistry of paraffin-embedded mouse brain using CREBBP antibody at dilution of 1:100 (40x lens).



Immunohistochemistry of paraffin-embedded mouse heart using CREBBP antibody at dilution of 1:100 (40x lens).

All products are for RESEARCH USE ONLY. Not for diagnostic & therapeutic purposes!