

SET Polyclonal Antibody

Catalog No: tcba2515



Available Sizes

Size: 50ul

Size: 100ul

Size: 200ul



Specifications

Application:

WB,IHC

Research Area:

Cancer,Cell cycle,Neuroscience,Cell Biology,Immunology,Neurodegeneration,Chromatin Remodeling,

Species Reactivity:

Human,Mouse,Rat

Host Species:

Rabbit

Isotype:

IgG

Form:

Liquid

Storage Buffer:

Buffer: PBS with 0.02% sodium azide, 50% glycerol, pH7.3.

Recommended Dilution:

WB 1:500 - 1:2000

IHC 1:50 - 1:200

Storage Instruction:

Store at -20°C. Avoid freeze / thaw cycles.

Alternative Names:

2PP2A;I2PP2A;IGAAD;IPP2A2;PHAPII;TAF-I;TAF-IBETA

SwissProt:

Q01105

Gene ID:

6418 (human);

Calculated Molecular Weight:

30kDa/31kDa/32kDa/33kDa

Purification:

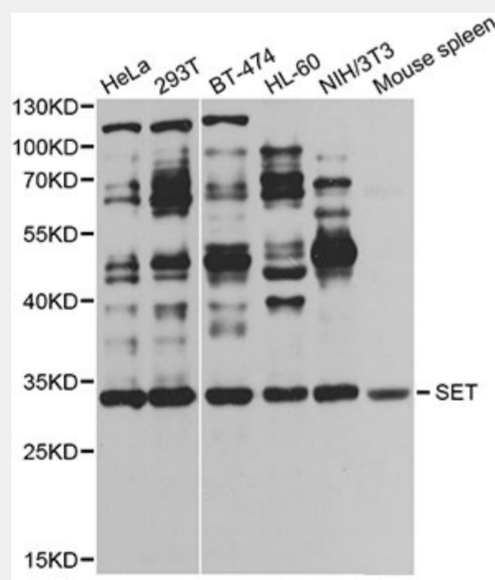
Affinity purification

Cellular Location:

Cytoplasm,Endoplasmic reticulum,Nucleus,cytosol,nucleoplasm,

Product Description

The protein encoded by this gene inhibits acetylation of nucleosomes, especially histone H4, by histone acetylases (HAT). This inhibition is most likely accomplished by masking histone lysines from being acetylated, and the consequence is to silence HAT-dependent transcription. The encoded protein is part of a complex localized to the endoplasmic reticulum but is found in the nucleus and inhibits apoptosis following attack by cytotoxic T lymphocytes. This protein can also enhance DNA replication of the adenovirus genome. Several transcript variants encoding different isoforms have been found for this gene.



Western blot analysis of extracts of various cell lines, using SET antibody at 1:1000 dilution.

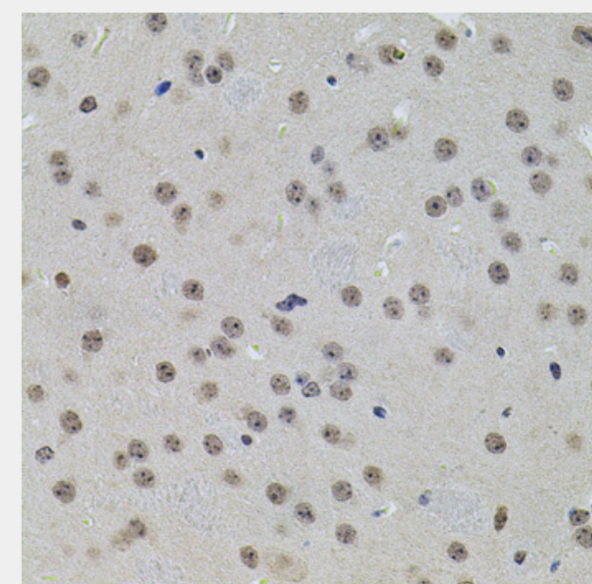
Secondary antibody: HRP Goat Anti-Rabbit IgG (H+L) at 1:10000 dilution.

Lysates/proteins: 25ug per lane.

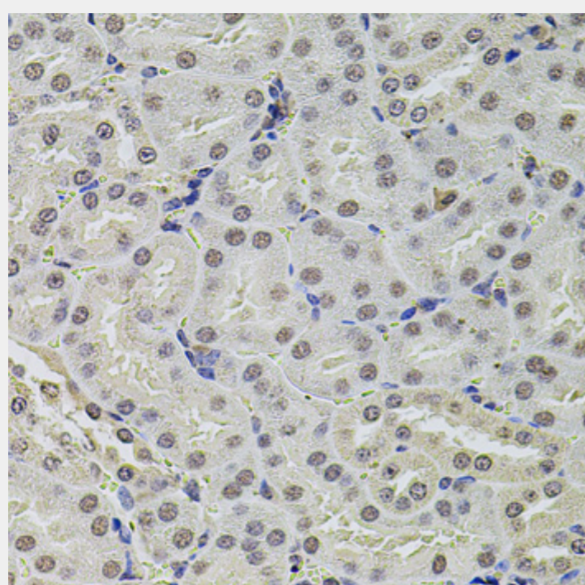
Blocking buffer: 3% nonfat dry milk in TBST.

Detection: ECL Basic Kit.

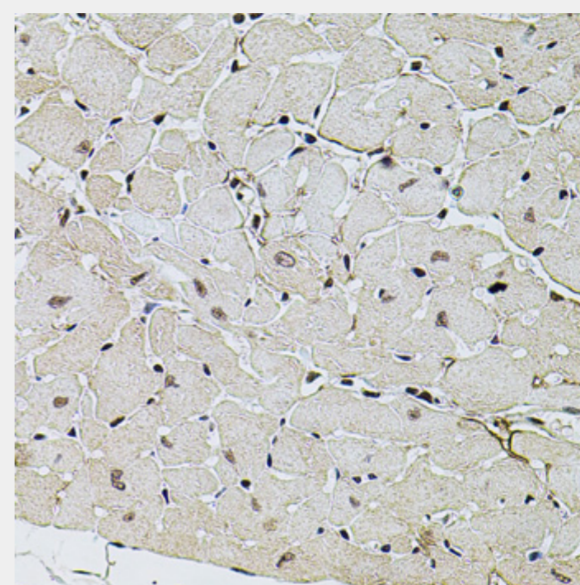
Exposure time: 30s.



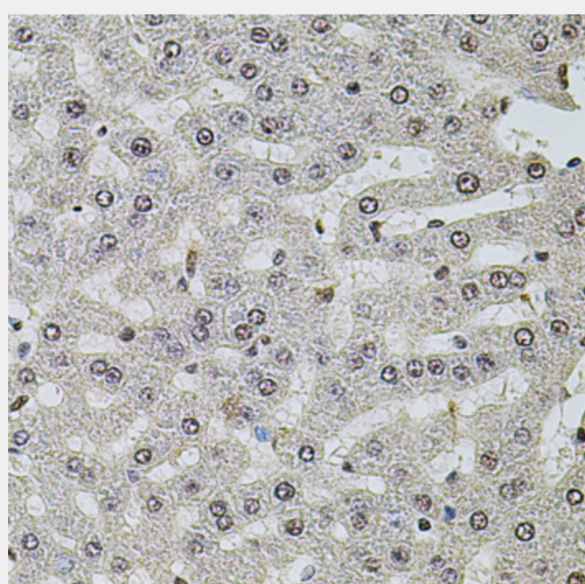
Immunohistochemistry of paraffin-embedded mouse brain using SET antibody at dilution of 1:100 (40x lens).



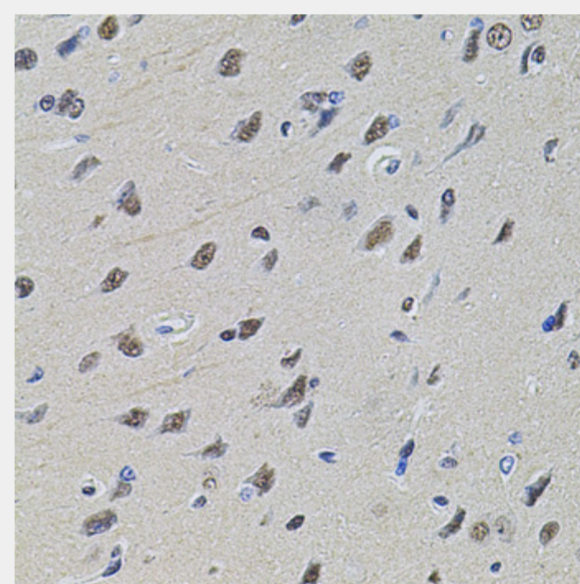
Immunohistochemistry of paraffin-embedded mouse kidney using SET antibody at dilution of 1:100 (40x lens).



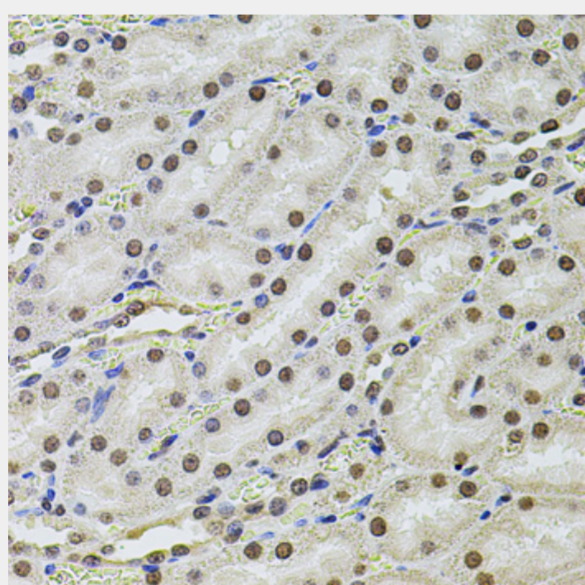
Immunohistochemistry of paraffin-embedded mouse heart using SET antibody at dilution of 1:100 (40x lens).



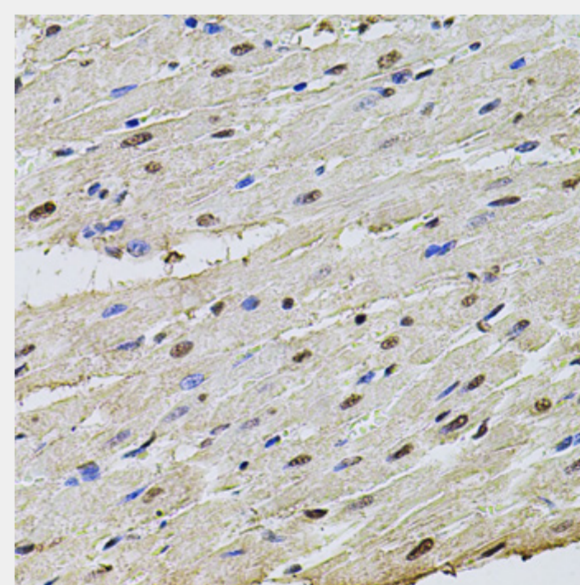
Immunohistochemistry of paraffin-embedded rat liver using SET antibody at dilution of 1:100 (40x lens).



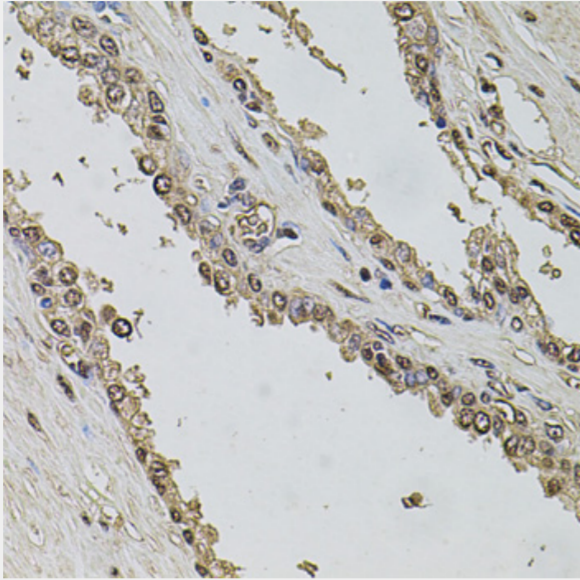
Immunohistochemistry of paraffin-embedded rat brain using SET antibody at dilution of 1:100 (40x lens).



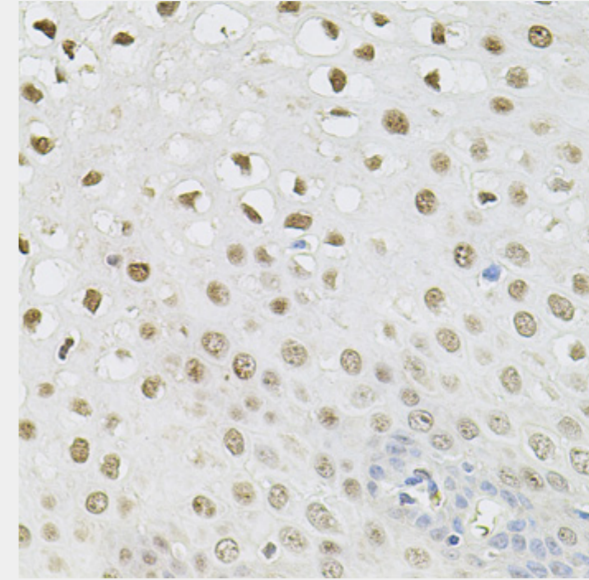
Immunohistochemistry of paraffin-embedded rat kidney using SET antibody at dilution of 1:100 (40x lens).



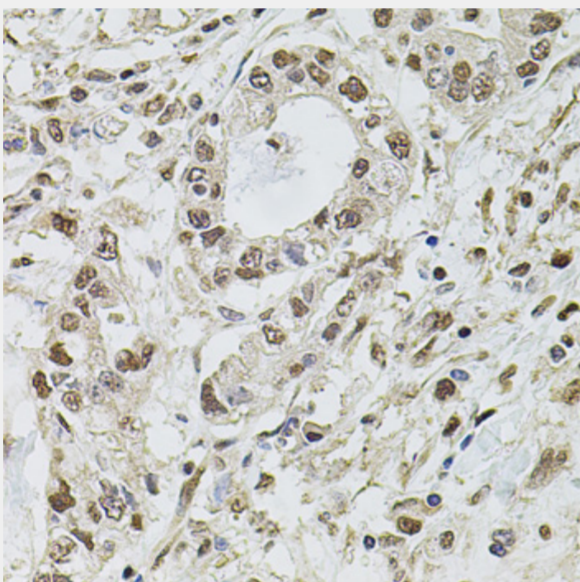
Immunohistochemistry of paraffin-embedded rat heart using SET antibody at dilution of 1:100 (40x lens).



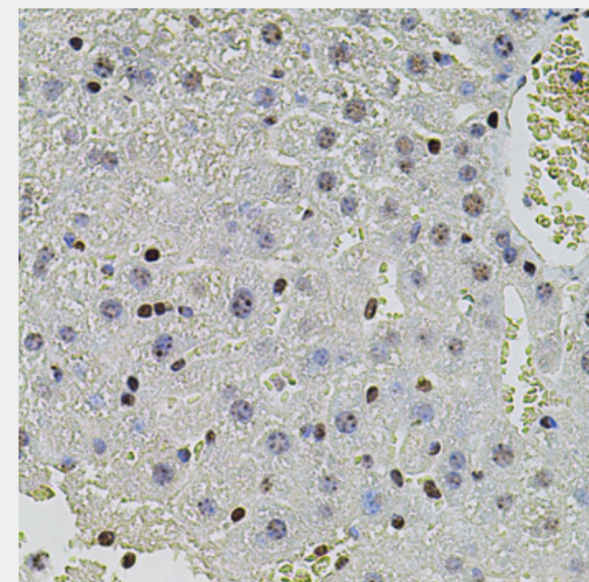
Immunohistochemistry of paraffin-embedded human prostate using SET antibody at dilution of 1:100 (40x lens).



Immunohistochemistry of paraffin-embedded human esophagus using SET antibody at dilution of 1:100 (40x lens).



Immunohistochemistry of paraffin-embedded human gastric cancer using SET antibody at dilution of 1:100 (40x lens).



Immunohistochemistry of paraffin-embedded mouse liver using SET antibody at dilution of 1:100 (40x lens).

All products are for RESEARCH USE ONLY. Not for diagnostic & therapeutic purposes!