

# RPN1 Polyclonal Antibody

Catalog No: tcba2510



## Available Sizes

**Size:** 50ul

**Size:** 100ul

**Size:** 200ul



## Specifications

**Application:**

WB,IHC

**Research Area:**

RNA Binding Protein(RBP),

**Species Reactivity:**

Human,Mouse,Rat

**Host Species:**

Rabbit

**Isotype:**

IgG

**Form:**

Liquid

**Storage Buffer:**

Buffer: PBS with 0.02% sodium azide, 50% glycerol, pH7.3.

**Recommended Dilution:**

WB 1:500 - 1:2000

IHC 1:50 - 1:200

**Storage Instruction:**

Store at -20°C. Avoid freeze / thaw cycles.

**Alternative Names:**

OST1;RBPH1

**SwissProt:**

P04843

**Gene ID:**

6184 (human);

**Calculated Molecular Weight:**

68kDa

**Purification:**

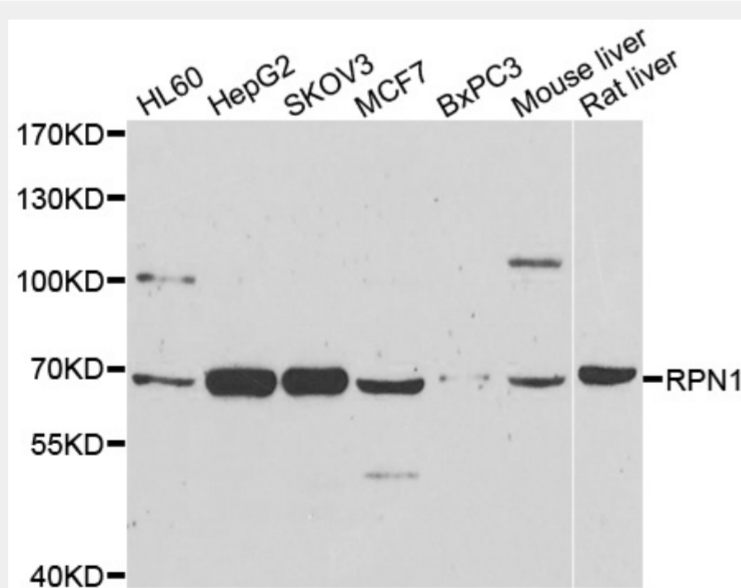
Affinity purification

**Cellular Location:**

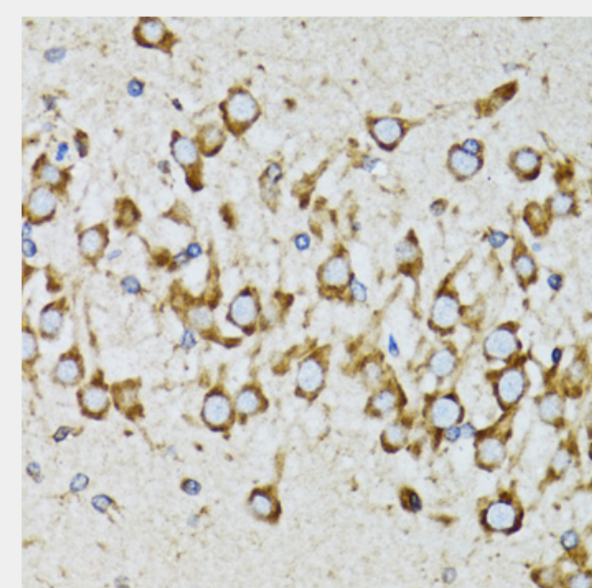
Endoplasmic reticulum membrane, Melanosome, Single-pass type I membrane protein,

**Product Description**

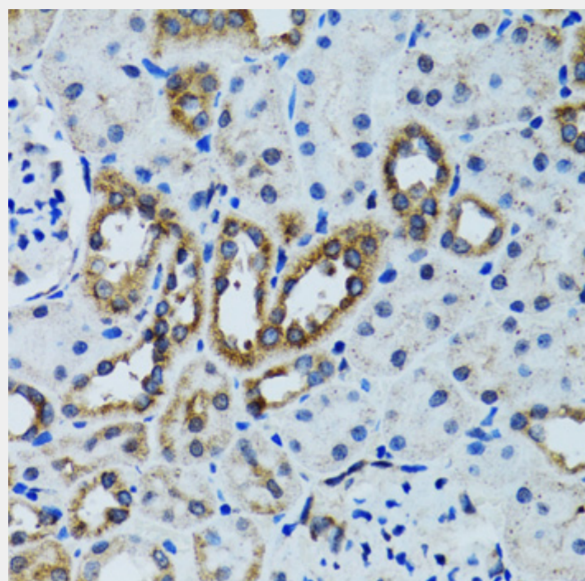
This gene encodes a type I integral membrane protein found only in the rough endoplasmic reticulum. The encoded protein is part of an N-oligosaccharyl transferase complex that links high mannose oligosaccharides to asparagine residues found in the Asn-X-Ser/Thr consensus motif of nascent polypeptide chains. This protein forms part of the regulatory subunit of the 26S proteasome and may mediate binding of ubiquitin-like domains to this proteasome.



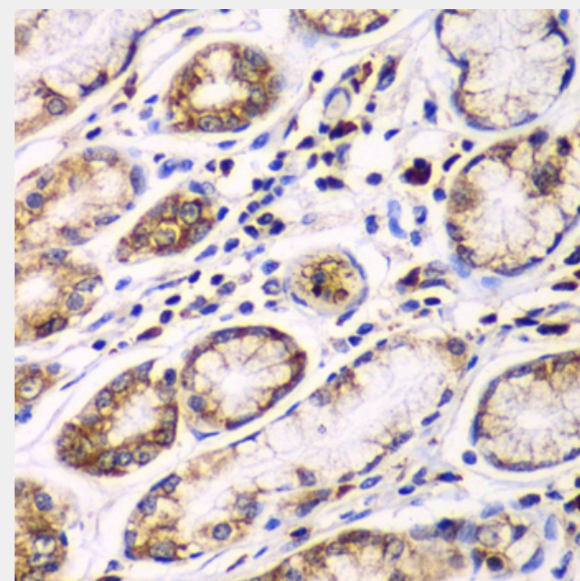
Western blot analysis of extracts of various cell lines, using RPN1 antibody at 1:1000 dilution.  
Secondary antibody: HRP Goat Anti-Rabbit IgG (H+L) at 1:10000 dilution.  
Lysates/proteins: 25ug per lane.  
Blocking buffer: 3% nonfat dry milk in TBST.  
Detection: ECL Basic Kit.  
Exposure time: 90s.



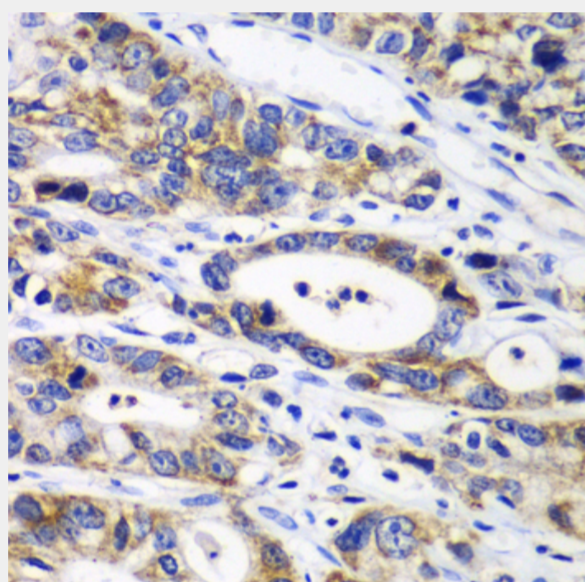
Immunohistochemistry of paraffin-embedded mouse brain using RPN1 antibody at dilution of 1:100 (40x lens).



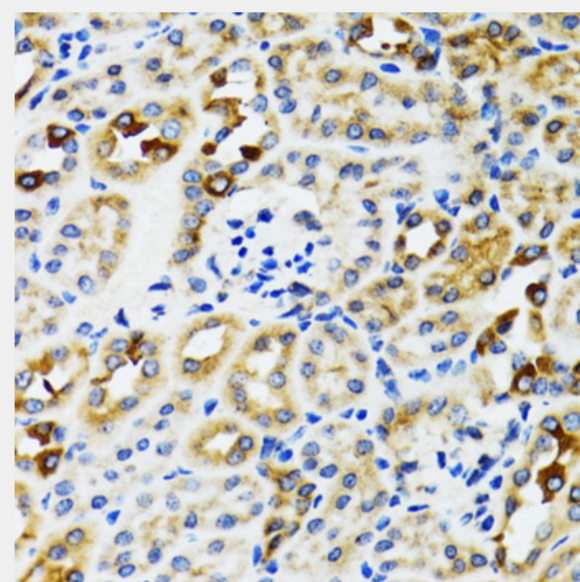
Immunohistochemistry of paraffin-embedded mouse kidney using RPN1 antibody at dilution of 1:100 (40x lens).



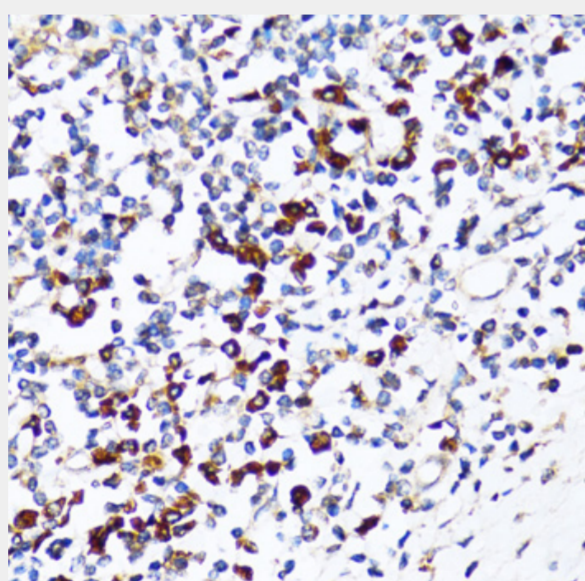
Immunohistochemistry of paraffin-embedded human colon using RPN1 antibody at dilution of 1:100 (40x lens).



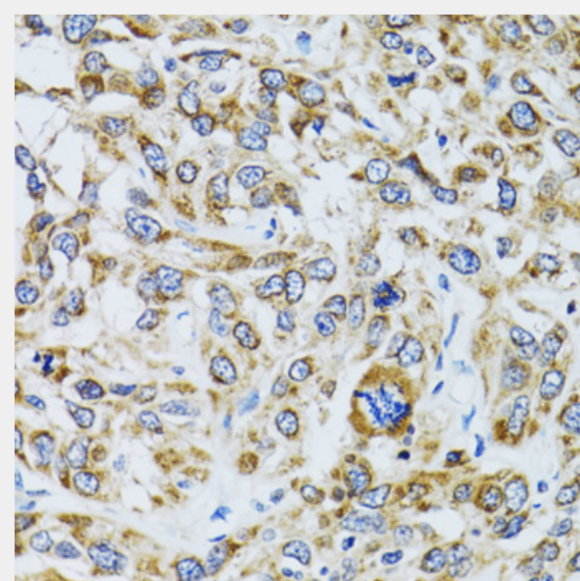
Immunohistochemistry of paraffin-embedded human gastric cancer using RPN1 antibody at dilution of 1:100 (40x lens).



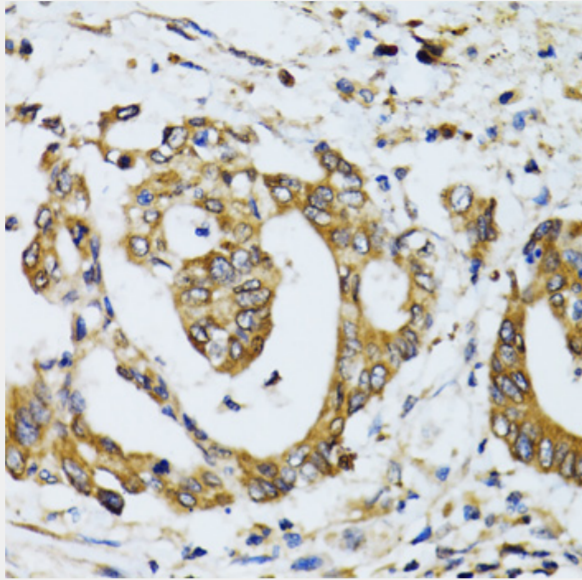
Immunohistochemistry of paraffin-embedded rat kidney using RPN1 antibody at dilution of 1:100 (40x lens).



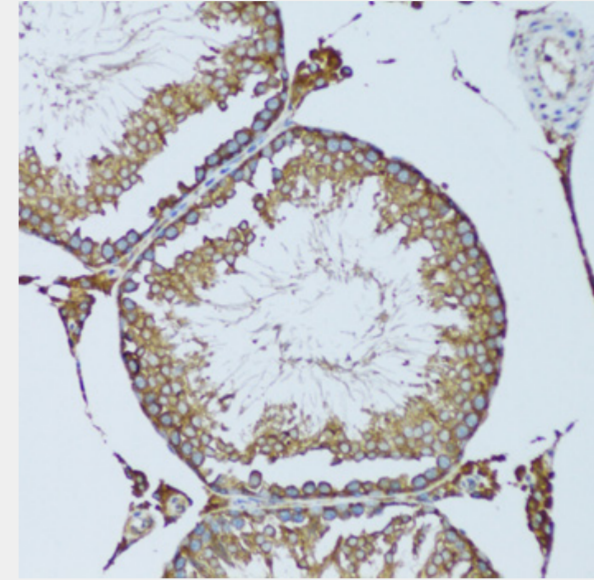
Immunohistochemistry of paraffin-embedded human tonsil using RPN1 antibody at dilution of 1:100 (40x lens).



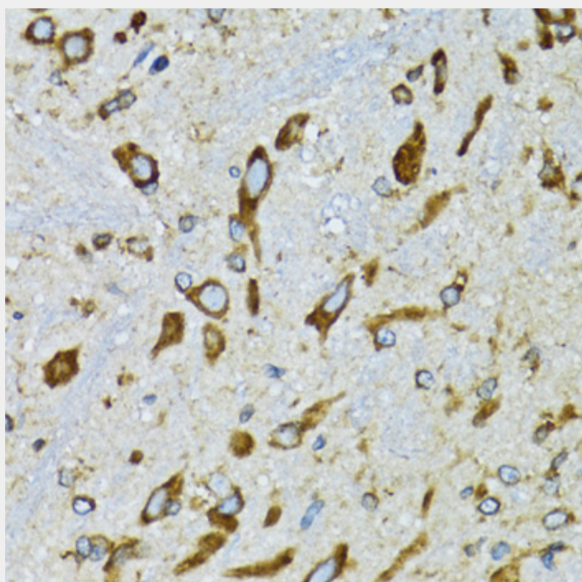
Immunohistochemistry of paraffin-embedded human liver cancer using RPN1 antibody at dilution of 1:100 (40x lens).



Immunohistochemistry of paraffin-embedded human colon carcinoma using RPN1 antibody at dilution of 1:100 (40x lens).



Immunohistochemistry of paraffin-embedded mouse testis using RPN1 antibody at dilution of 1:100 (20x lens).



Immunohistochemistry of paraffin-embedded mouse spinal cord using RPN1 antibody at dilution of 1:100 (40x lens).

All products are for RESEARCH USE ONLY. Not for diagnostic & therapeutic purposes!