

# Polyclonal Antibody to Matrix Metalloproteinase 9 (MMP9)

**Catalog No: tcua6677**

**KO** VALIDATED



## Available Sizes

---

**Size:** 20ul

**Size:** 100ul

**Size:** 200ul



## Specifications

---

**Application:**

WB; IHC; ICC; IP.

**Species Reactivity:**

Rattus norvegicus (Rat)

**Host Species:**

Rabbit

**Immunogen / Amino acids:**

Recombinant Matrix Metalloproteinase 9 (MMP9)

**Conjugation:**

Unconjugated

**Clonality:**

Polyclonal

**Form:**

Liquid

**Storage Buffer:**

0.01M PBS, pH7.4, containing 0.05% Proclin-300, 50% glycerol.

**Recommended Dilution:**

Western blotting: 0.5-2µg/mL;1:200-800

Immunohistochemistry: 5-20µg/mL;1:200-800

Immunocytochemistry: 5-20µg/mL;1:200-800

Optimal working dilutions must be determined by end user.

**Alternative Names:**

GELB; Gelatinase B; CLG4B; CLG4-B; 92 KDa Gelatinase; 92kDa Type IV Collagenase

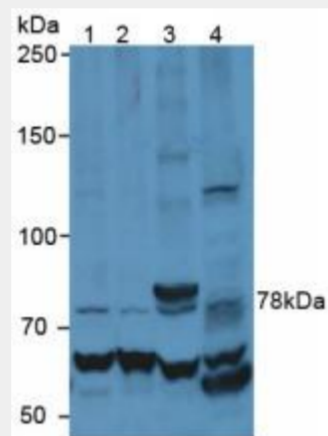
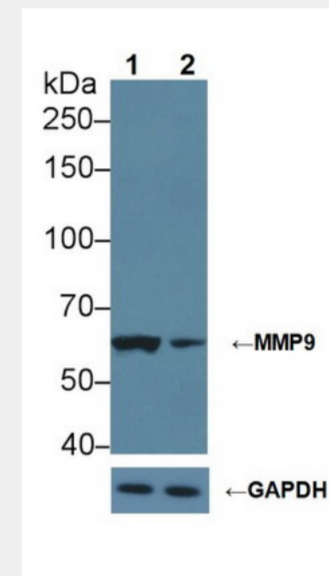


Figure. Western Blot; Sample: Lane1: Human Jurkat Cells; Lane2: Human HepG2 Cells; Lane3: Human Raji Cells; Lane4: Rat Brain Tissue.)



Knockout Varification: <br/>Lane 1: Wild-type Jurkat cell lysate; <br/>Lane 2: MMP9 knockout Jurkat cell lysate; <br/>Predicted MW: 79kDa <br/>Observed MW: 62kDa<br/>Primary Ab: 2µg/ml Rabbit Anti-Rat MMP9 Antibody<br/>Second Ab: 0.2µg/mL HRP-Linked Caprine Anti-Rabbit IgG Polyclonal Antibody<br/>Catalog: SAA544Rb19)

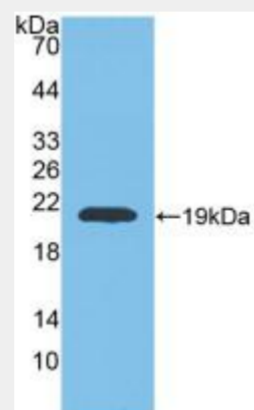


Figure. Western Blot; Sample: Recombinant MMP9, Rat.)

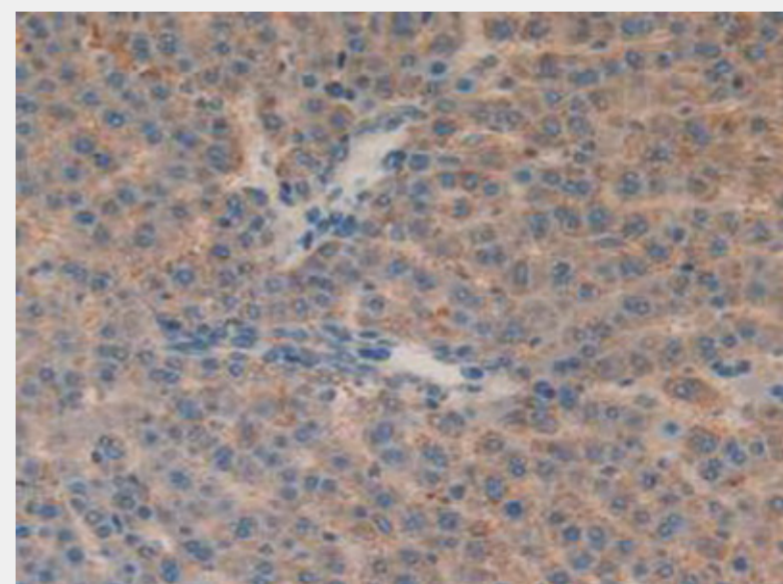


Figure. DAB staining on IHC-P; Samples: Rat Liver Tissue.)

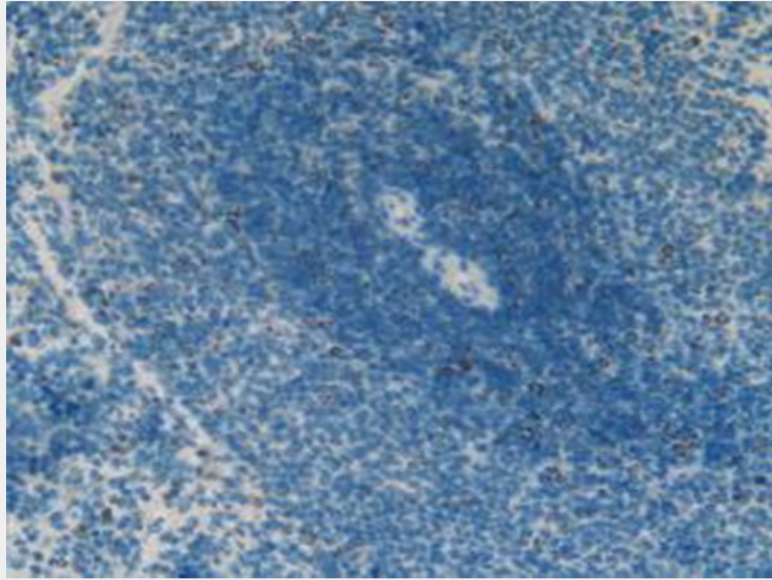


Figure. DAB staining on IHC-P;  
Samples: Rat Spleen Tissue.)

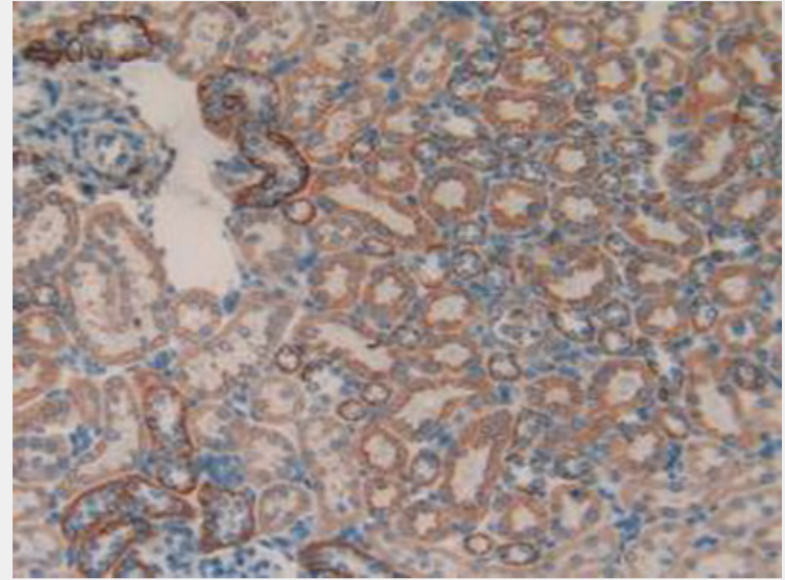


Figure. DAB staining on IHC-P;  
Samples: Rat Kidney Tissue.)

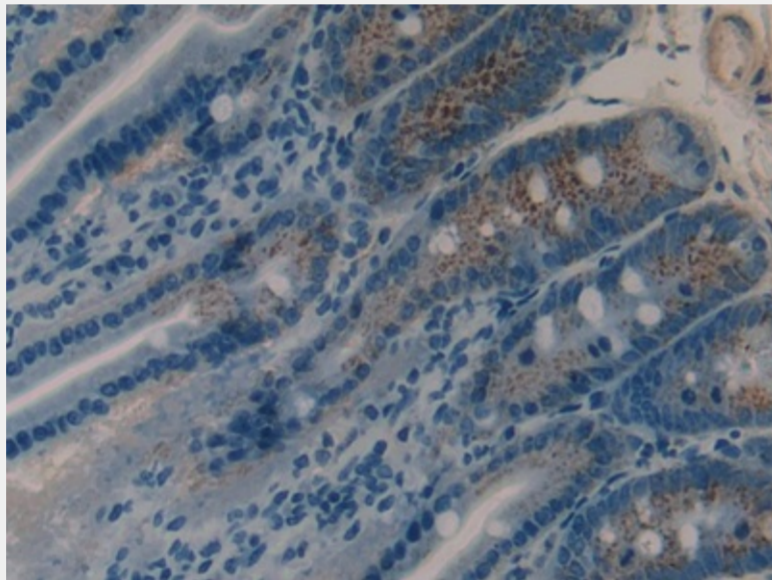


Figure. DAB staining on IHC-P; Samples: Rat Intestine Tissue.)

All products are for RESEARCH USE ONLY. Not for diagnostic & therapeutic purposes!