

Phospho-RB1-S807 mAb

Catalog No: tcba13517



Available Sizes

Size: 50ul

Size: 100ul

Size: 200ul



Specifications

Application:

WB,IHC,IF

Research Area:

Cancer,Cell cycle,Cell Biology,Cell Cycle,Epigenetics,

Species Reactivity:

Human,Mouse,Rat

Host Species:

Rabbit

Isotype:

IgG

Form:

Liquid

Storage Buffer:

Buffer: PBS with 0.02% sodium azide, 50% glycerol, pH7.3.

Recommended Dilution:

WB 1:500 - 1:2000

IHC 1:50 - 1:200

IF 1:50 - 1:200

Storage Instruction:

Store at -20°C. Avoid freeze / thaw cycles.

Alternative Names:

OSRC;p105-Rb;pp110;PPP1R130;pRb;RB

SwissProt:

P06400

Gene ID:

5925 (human);

Calculated Molecular Weight:

106kDa

Purification:

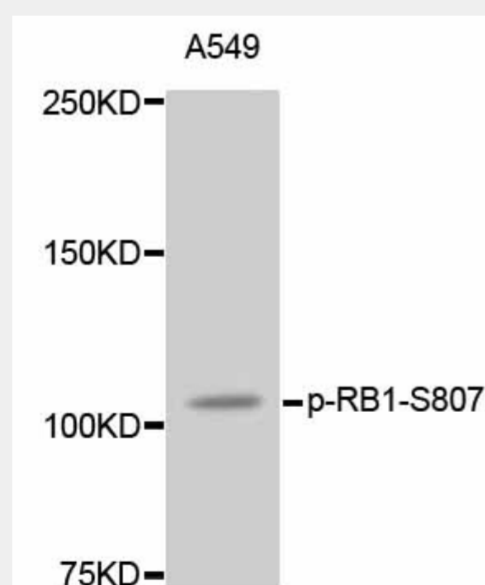
Affinity purification

Cellular Location:

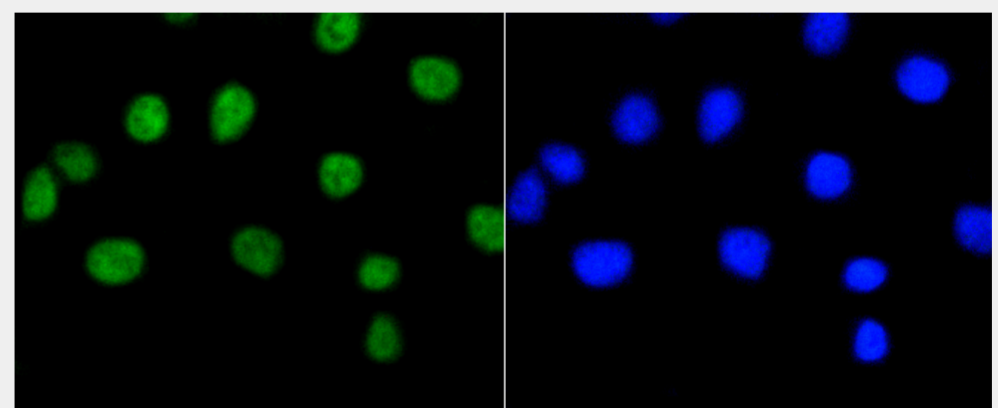
Nucleus,

Product Description

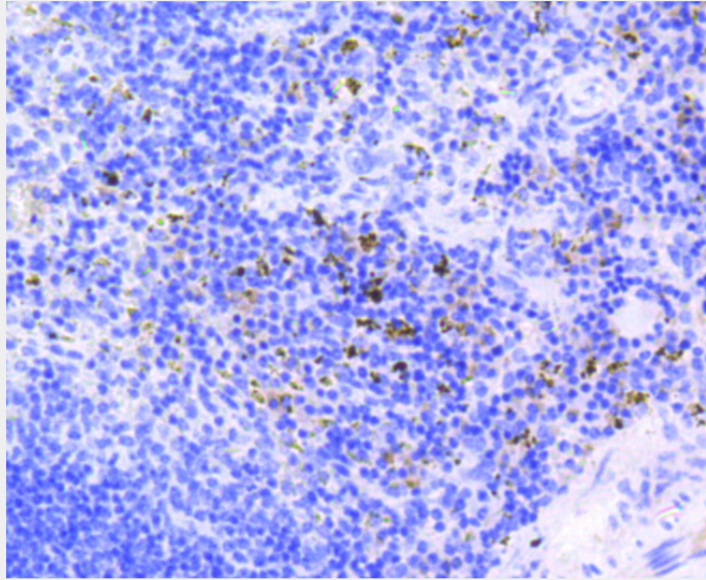
The protein encoded by this gene is a negative regulator of the cell cycle and was the first tumor suppressor gene found. The encoded protein also stabilizes constitutive heterochromatin to maintain the overall chromatin structure. The active, hypophosphorylated form of the protein binds transcription factor E2F1. Defects in this gene are a cause of childhood cancer retinoblastoma (RB), bladder cancer, and osteogenic sarcoma.



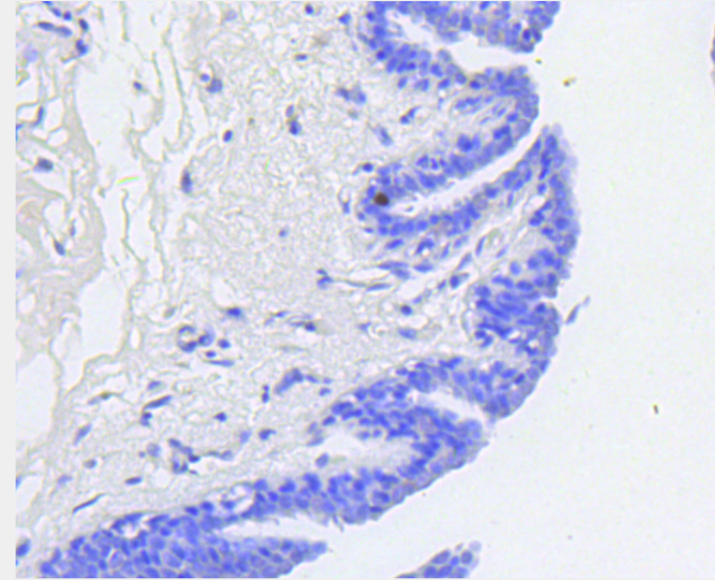
Western blot analysis of extracts of A549 cells, using Phospho-RB1-S807 antibody.
Secondary antibody: HRP Goat Anti-Rabbit IgG (H+L) at 1:10000 dilution.
Lysates/proteins: 25ug per lane.
Blocking buffer: 3% BSA.



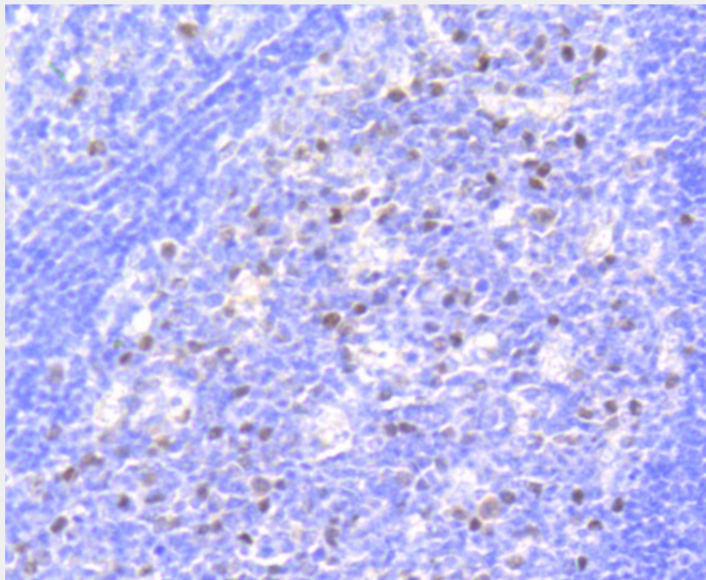
Immunofluorescence analysis of A549 cells using Phospho-RB1-S807 antibody.



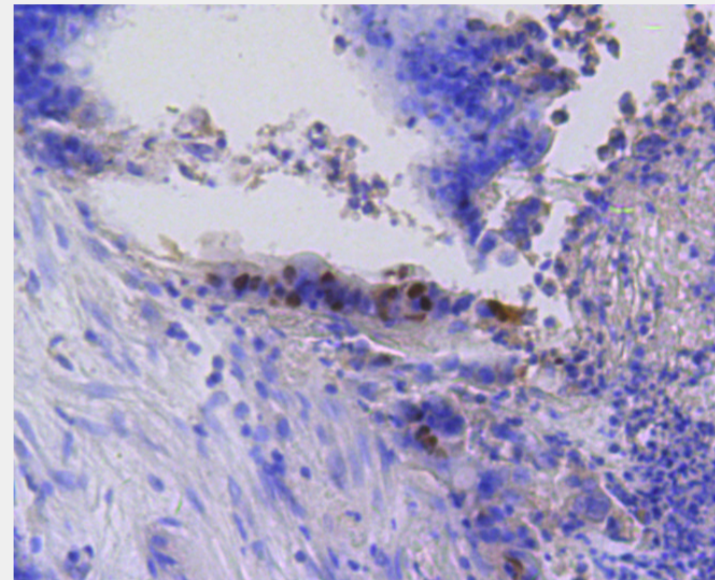
Immunohistochemistry of paraffin-embedded mouse spleen using Phospho-RB1-S807 antibody at dilution of 1:100 (40x lens).



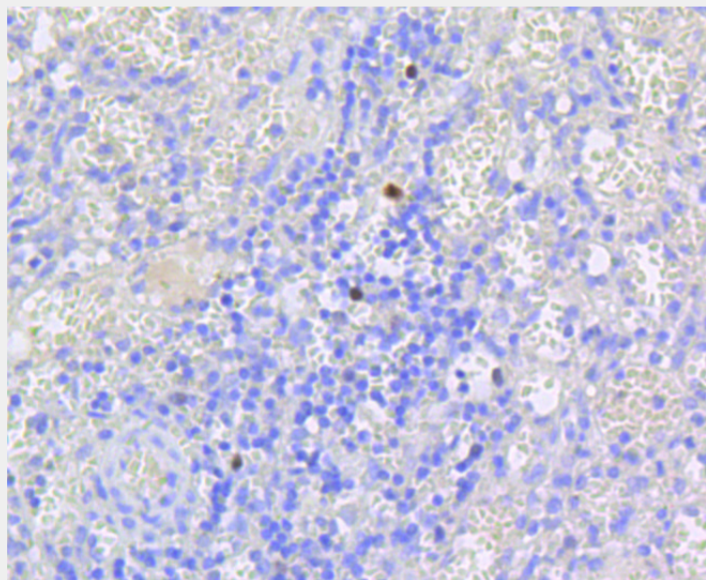
Immunohistochemistry of paraffin-embedded human mammary cancer using Phospho-RB1-S807 antibody at dilution of 1:100 (40x lens).



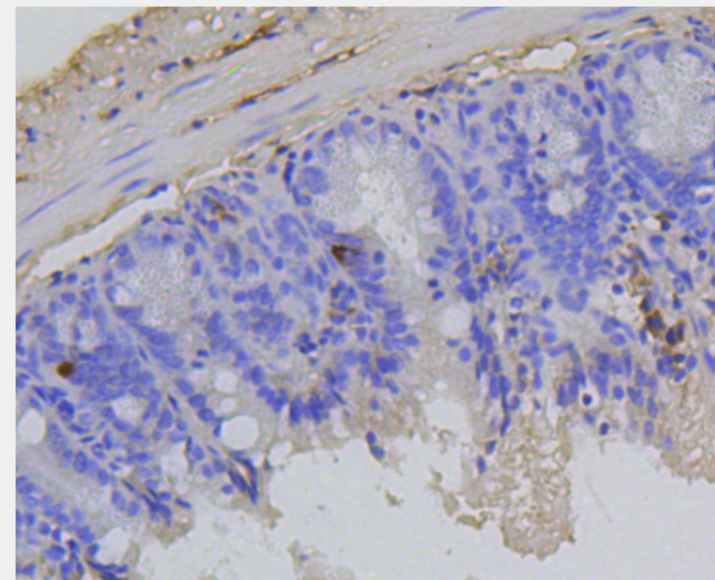
Immunohistochemistry of paraffin-embedded human tonsil using Phospho-RB1-S807 antibody at dilution of 1:100 (40x lens).



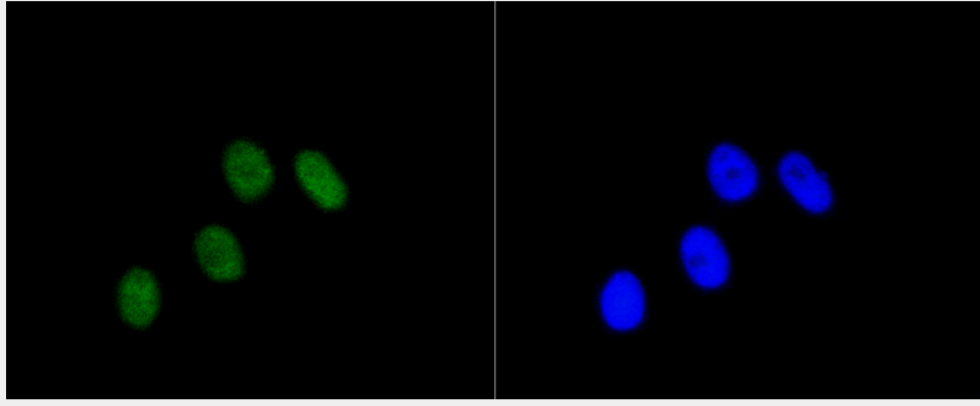
Immunohistochemistry of paraffin-embedded human colon carcinoma using Phospho-RB1-S807 antibody at dilution of 1:100 (40x lens).



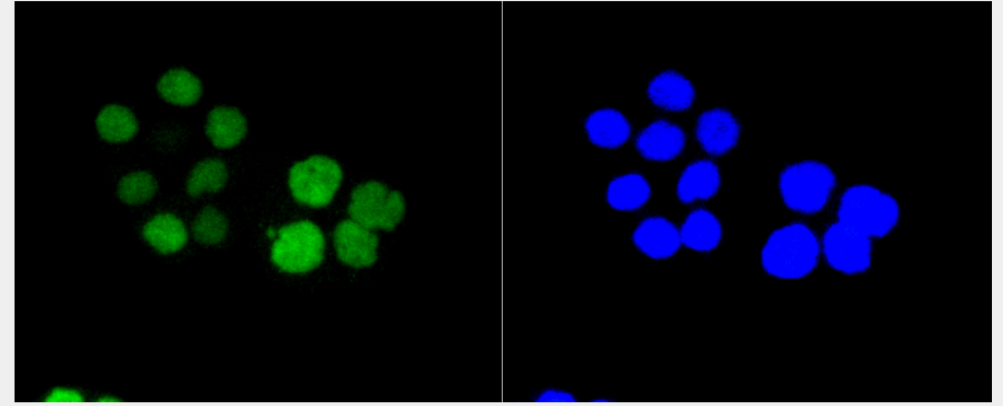
Immunohistochemistry of paraffin-embedded human spleen using Phospho-RB1-S807 antibody at dilution of 1:100 (40x lens).



Immunohistochemistry of paraffin-embedded mouse colon using Phospho-RB1-S807 antibody at dilution of 1:100 (40x lens).



Immunofluorescence analysis of MCF-7 cells using Phospho-RB1-S807 antibody.



Immunofluorescence analysis of CRC cells using Phospho-RB1-S807 antibody.

All products are for RESEARCH USE ONLY. Not for diagnostic & therapeutic purposes!