

# Phospho-ERK1-T202 / Y204 + ERK2-T185 / Y187 pAb

Catalog No: tcba13398



## Available Sizes

---

**Size:** 20 ul

**Size:** 50ul

**Size:** 100ul

**Size:** 200ul



## Specifications

---

**Application:**

WB,IP,IHC

**Research Area:**

Cancer,MAPK pathway,Neuroscience,Immunology,Innate Immunity,Neurodegeneration,

**Species Reactivity:**

Human,Mouse,Rat

**Host Species:**

Rabbit

**Immunogen / Amino acids:**

A synthetic phosphorylated peptide around T185/Y187 of human ERK2 (NP\_002736.3).

**Isotype:**

IgG

**Form:**

Liquid

**Storage Buffer:**

Buffer: PBS with 0.02% sodium azide, 50% glycerol, pH7.3.

**Recommended Dilution:**

WB 1:500 - 1:2000  
IP 1:50 - 1:100

---

**Amino Acid Sequence:**

FLTEYVA

---

**Storage Instruction:**

Store at -20°C. Avoid freeze / thaw cycles.

---

**SwissProt:**

P28482/P27361

---

**Gene ID:**

5594/5595 (human);

---

**Reference Sequence No.:**

FLTEYVA

---

**Calculated Molecular Weight:**

36kDa/41kDa/38kDa/40kDa/43kDa

---

**Purification:**

Affinity purification

---

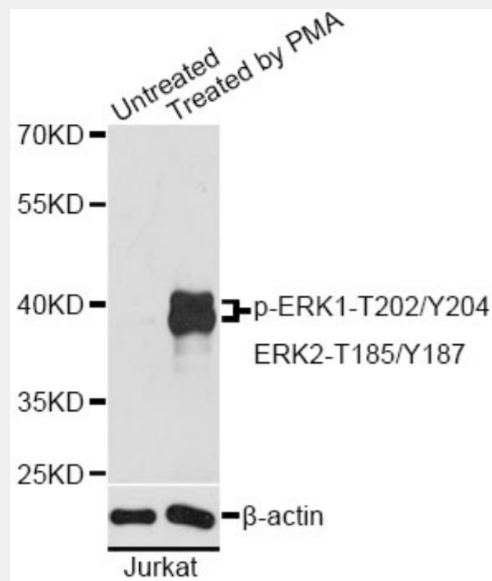
**Positive Control:**

Jurkat

---

**References**

WB(MDA-MB-231, Raw264.7, Mouse splenocytes, C6, Murine, Human, Mouse, Rat, Pig) IF(Human)



Western blot analysis of extracts of Jurkat cells, using Phospho-ERK1-T202/Y204 + ERK2-T185/Y187 antibody at 1:2000 dilution. Jurkat cells were treated by PMA/TPA (200nM) for 10 minutes.

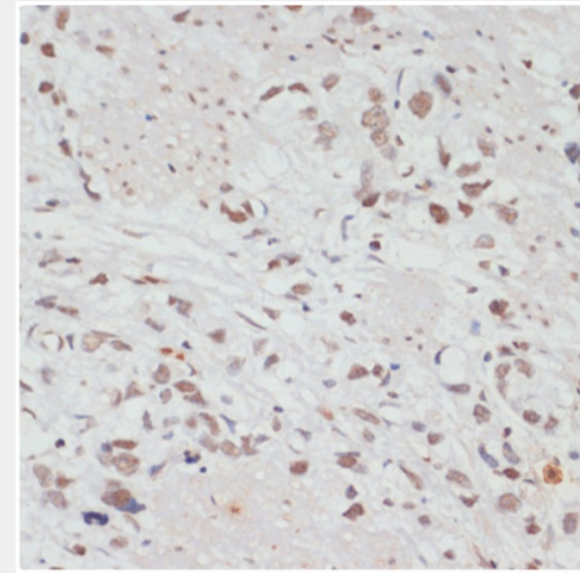
Secondary antibody: HRP Goat Anti-Rabbit IgG (H+L) at 1:10000 dilution.

Lysates/proteins: 25ug per lane.

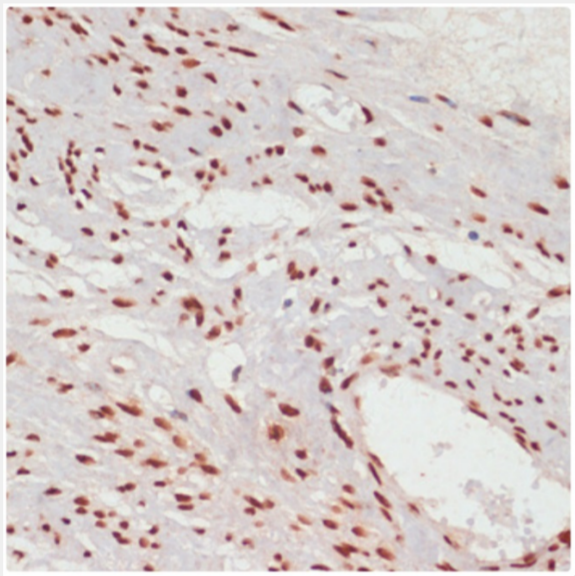
Blocking buffer: 3% BSA.

Detection: ECL Basic Kit.

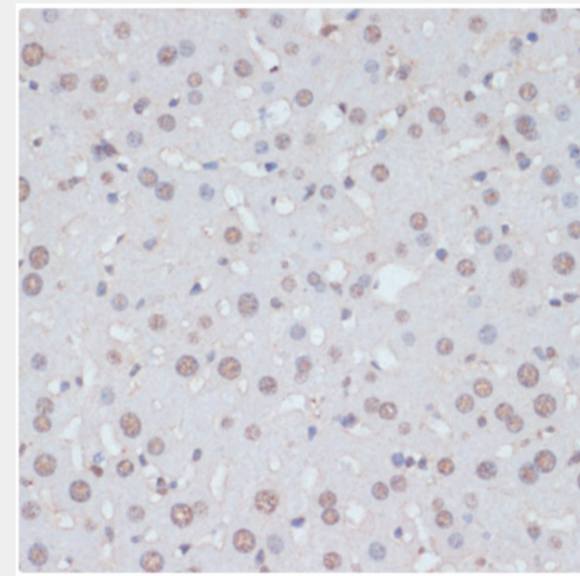
Exposure time: 5s.



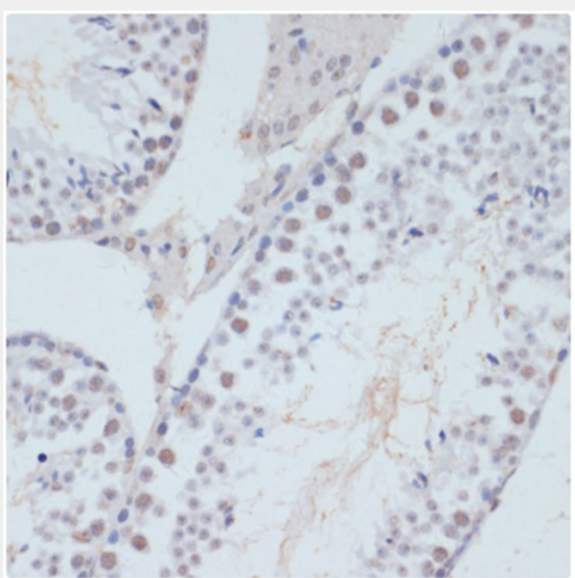
Immunohistochemistry of paraffin-embedded human gastric cancer using Phospho-ERK1-T202-Y204 + ERK2-T185-Y187 antibody (tcba13398) at dilution of 1:100 (40x lens).



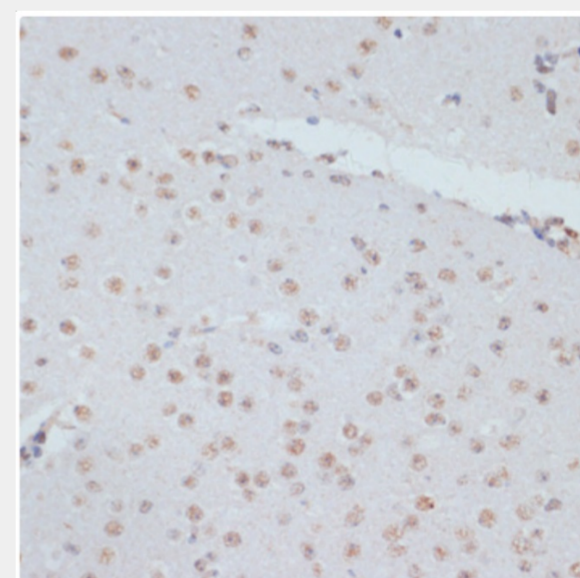
Immunohistochemistry of paraffin-embedded human uterine cancer using Phospho-ERK1-T202-Y204 + ERK2-T185-Y187 antibody (tcba13398) at dilution of 1:100 (40x lens).



Immunohistochemistry of paraffin-embedded mouse liver using Phospho-ERK1-T202-Y204 + ERK2-T185-Y187 antibody (tcba13398) at dilution of 1:100 (40x lens).

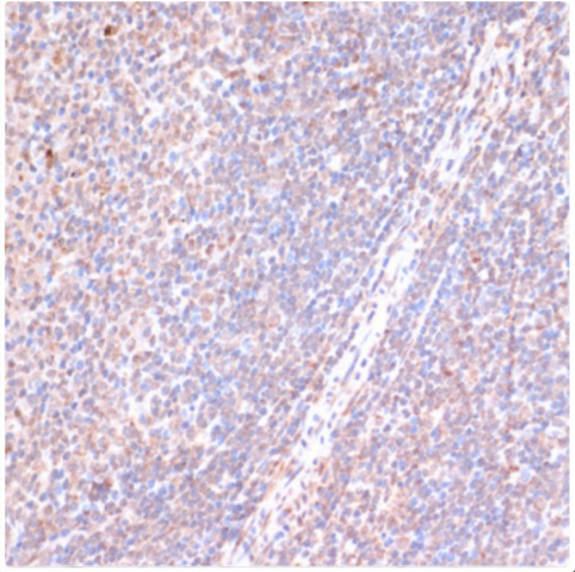


Immunohistochemistry - Phospho-ERK1-T202/Y204 + ERK2-T185/Y187 pAb (AP0472)  
Immunohistochemistry of paraffin-embedded mouse testis using Phospho-ERK1-T202-Y204 + ERK2-T185-Y187 antibody (tcba13398) at dilution of 1:100 (40x lens).

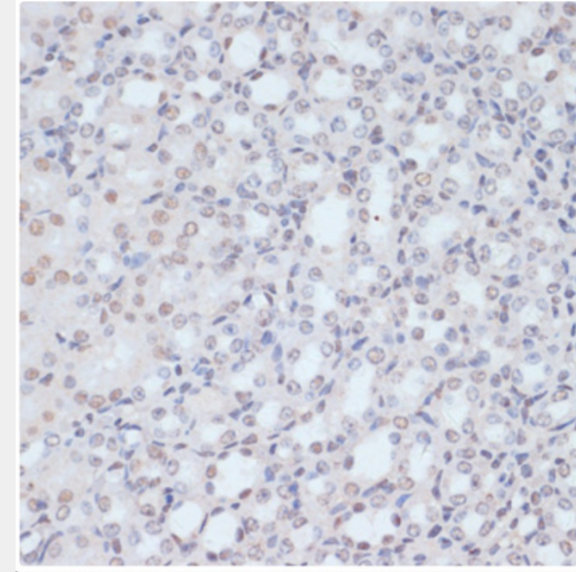


Immunohistochemistry of paraffin-embedded mouse brain using Phospho-ERK1-T202-Y204 + ERK2-T185-Y187 antibody (tcba13398) at dilution of 1:100 (40x lens).

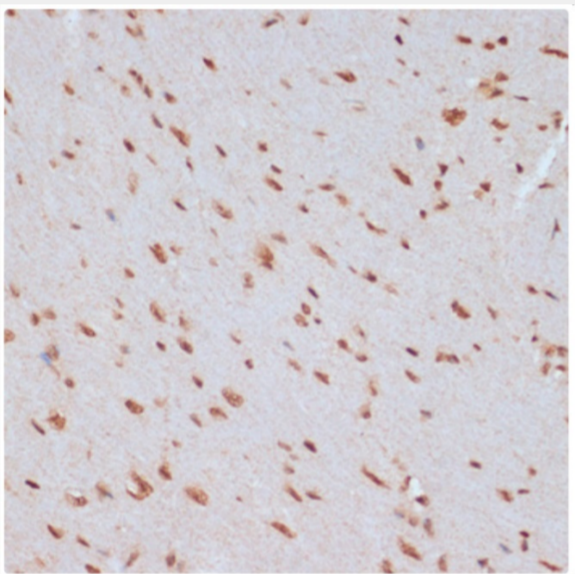




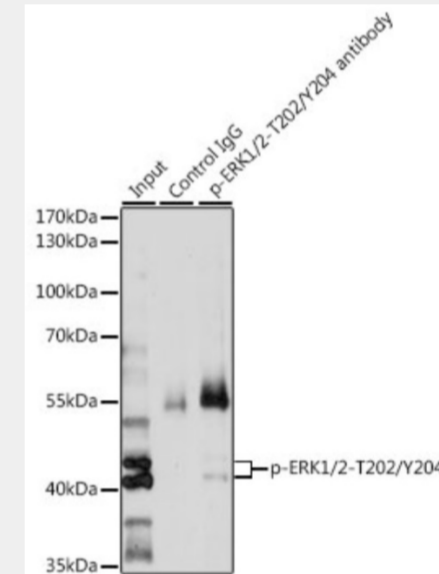
Immunohistochemistry of paraffin-embedded mouse spleen using Phospho-ERK1-T202-Y204 + ERK2-T185-Y187 antibody (tcba13398) at dilution of 1:100 (40x lens).



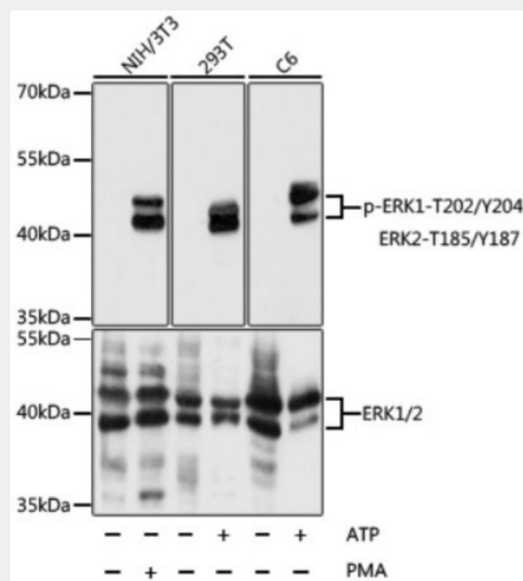
Immunohistochemistry of paraffin-embedded mouse kidney using Phospho-ERK1-T202-Y204 + ERK2-T185-Y187 antibody (tcba13398) at dilution of 1:100 (40x lens).



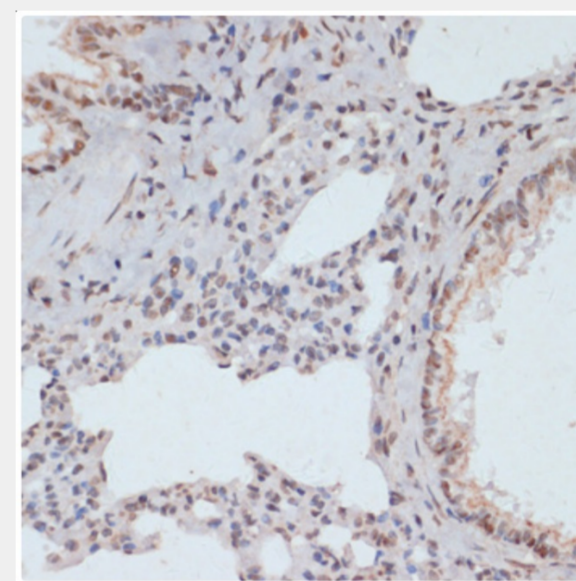
Immunohistochemistry of paraffin-embedded mouse heart using Phospho-ERK1-T202-Y204 + ERK2-T185-Y187 antibody (AP0472) at dilution of 1:100 (40x lens).



Immunoprecipitation - Phospho-ERK1-T202/Y204 + ERK2-T185/Y187 pAb.

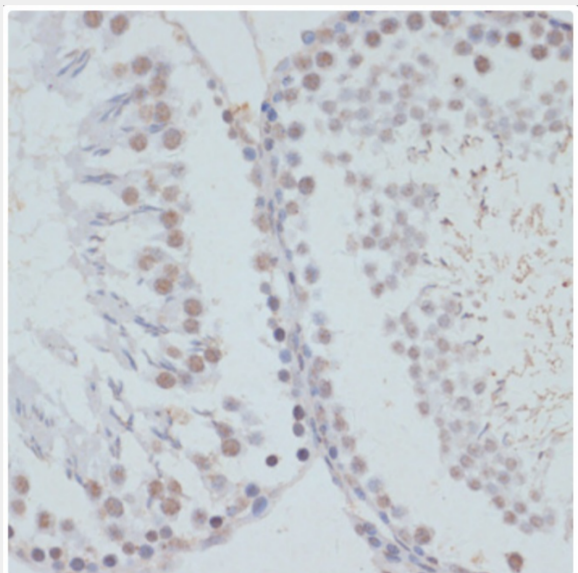


Western blot analysis of extracts of various cell lines, using Phospho-ERK1-T202/Y204 + ERK2-T185/Y187 antibody at 1:5000 dilution or ERK1/2 antibody. 293T cells and C6 cells were treated by ATP(5 mM) at 30°C for 1 hour. NIH/3T3 cells were treated by PMA/TPA (200 nM) at 37°C for 30 minutes after serum-starvation overnight. Secondary antibody: HRP Goat Anti-Rabbit IgG (H+L) at 1:10000 dilution. Lysates/proteins: 25ug per lane. Blocking buffer: 3% BSA. Detection: ECL Basic Kit (RM00020). Exposure time: 10s.

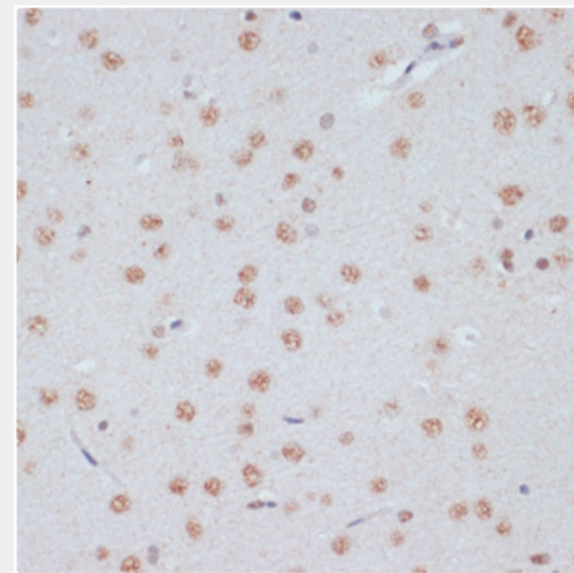


Immunohistochemistry of paraffin-embedded rat lung using Phospho-ERK1-T202-Y204 + ERK2-T185-Y187 antibody (tcba13398) at dilution of 1:100 (40x lens).

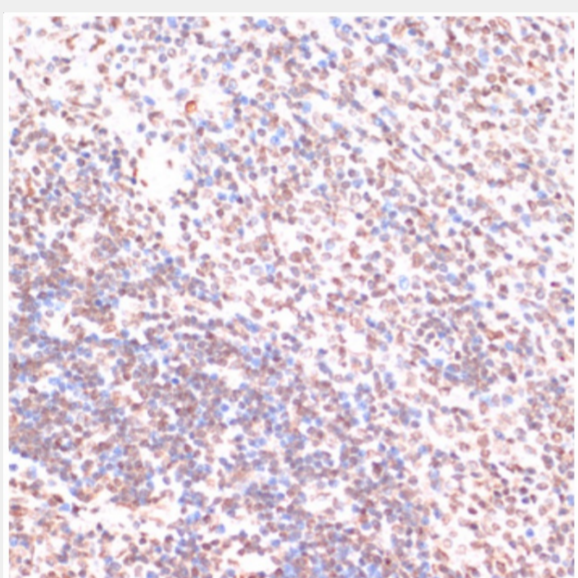




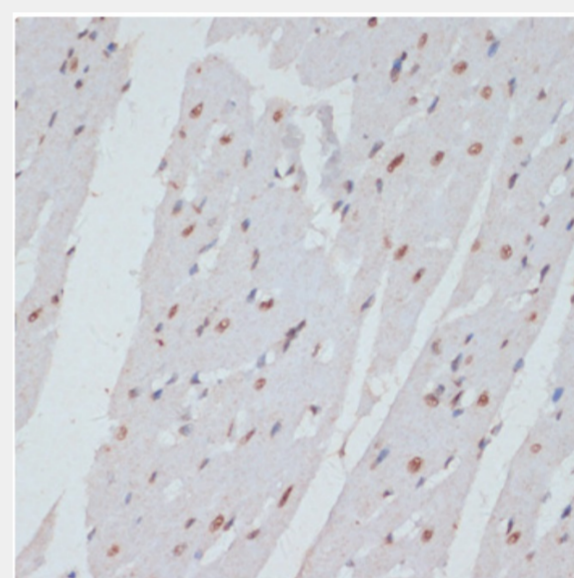
Immunohistochemistry of paraffin-embedded rat testis using Phospho-ERK1-T202-Y204 + ERK2-T185-Y187 antibody (tcba13398) at dilution of 1:100 (40x lens).



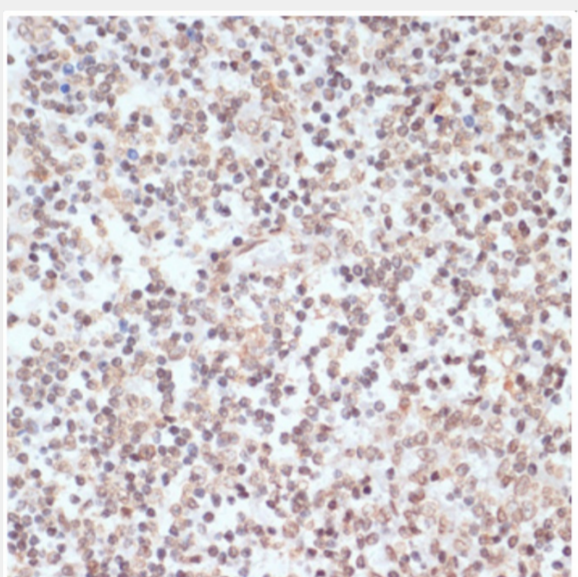
Immunohistochemistry of paraffin-embedded rat brain using Phospho-ERK1-T202-Y204 + ERK2-T185-Y187 antibody (tcba13398) at dilution of 1:100 (40x lens).



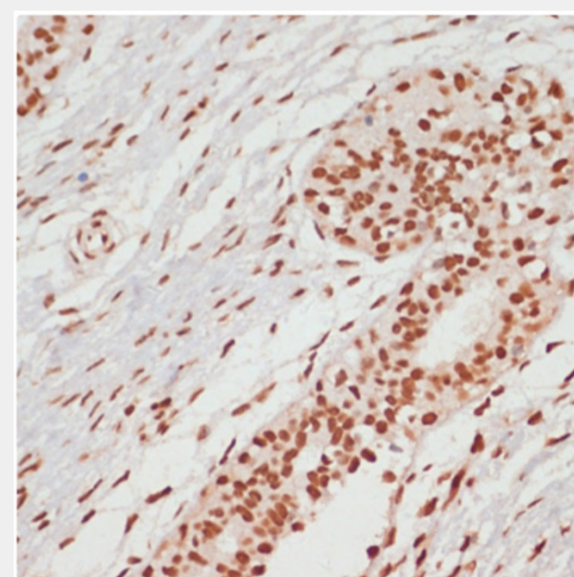
Immunohistochemistry of paraffin-embedded rat spleen using Phospho-ERK1-T202-Y204 + ERK2-T185-Y187 antibody (tcba13398) at dilution of 1:100 (40x lens).



Immunohistochemistry of paraffin-embedded rat heart using Phospho-ERK1-T202-Y204 + ERK2-T185-Y187 antibody (tcba13398) at dilution of 1:100 (40x lens).



Immunohistochemistry of paraffin-embedded human tonsil using Phospho-ERK1-T202-Y204 + ERK2-T185-Y187 antibody (tcba13398) at dilution of 1:100 (40x lens).



Immunohistochemistry of paraffin-embedded human breast cancer using Phospho-ERK1-T202-Y204 + ERK2-T185-Y187 antibody (tcba13398) at dilution of 1:100 (40x lens).

All products are for RESEARCH USE ONLY. Not for diagnostic & therapeutic purposes!