

# Phospho-MAPT-T181 pAb

Catalog No: tcba13329



## Available Sizes

**Size:** 50ul

**Size:** 100ul

**Size:** 200ul



## Specifications

**Application:**

WB,IHC

**Research Area:**

Cancer,Stem cells,Apoptosis,Neuroscience,Neurodegeneration,MAPK/p38 pathway,

**Species Reactivity:**

Human,Mouse,Rat

**Host Species:**

Rabbit

**Isotype:**

IgG

**Form:**

Liquid

**Storage Buffer:**

Buffer: PBS with 0.02% sodium azide, 50% glycerol, pH7.3.

**Recommended Dilution:**

WB 1:500 - 1:2000

IHC 1:50 - 1:100

**Storage Instruction:**

Store at -20°C. Avoid freeze / thaw cycles.

**Alternative Names:**

DDPAC;FTDP-17;MAPTL;MSTD;MTBT1;MTBT2;PPND;PPP1R103;TAU

**SwissProt:**

P10636

**Gene ID:**

4137 (human);

**Calculated Molecular Weight:**

32-45kDa/78- 80kDa

**Purification:**

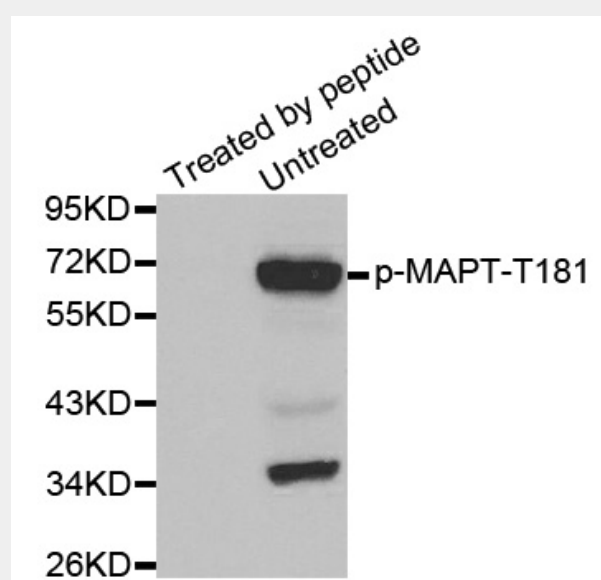
Affinity purification

**Cellular Location:**

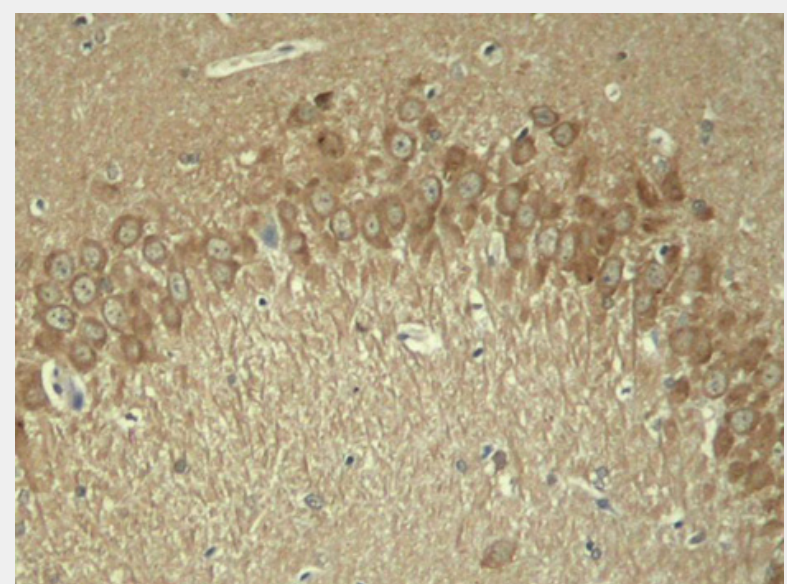
Cell membrane,Cell projection,Cytoplasm,Cytoplasmic side,Peripheral membrane protein,axon,cytoskeleton,cytosol,

**Product Description**

This gene encodes the microtubule-associated protein tau (MAPT) whose transcript undergoes complex, regulated alternative splicing, giving rise to several mRNA species. MAPT transcripts are differentially expressed in the nervous system, depending on stage of neuronal maturation and neuron type. MAPT gene mutations have been associated with several neurodegenerative disorders such as Alzheimer's disease, Pick's disease, frontotemporal dementia, cortico-basal degeneration and progressive supranuclear palsy.



Western blot analysis of extracts from mouse brain tissue using Phospho-MAPT-T181 antibody.  
Secondary antibody: HRP Goat Anti-Rabbit IgG (H+L) at 1:10000 dilution.  
Lysates/proteins: 25ug per lane.  
Blocking buffer: 3% BSA.



Immunohistochemistry of paraffin-embedded rat hippocampal region tissue from a model with Alzheimer using Phospho-MAPT-T181 antibody.

All products are for RESEARCH USE ONLY. Not for diagnostic & therapeutic purposes!