

PLK4 Polyclonal Antibody

Catalog No: tcba12830



Available Sizes

Size: 50ul

Size: 100ul

Size: 200ul



Specifications

Application:

WB,IHC

Research Area:

Cancer,Cell cycle,Cell Biology,

Species Reactivity:

Human,Mouse,Rat

Host Species:

Rabbit

Isotype:

IgG

Form:

Liquid

Storage Buffer:

Buffer: PBS with 0.02% sodium azide, 50% glycerol, pH7.3.

Recommended Dilution:

WB 1:500 - 1:2000

IHC 1:50 - 1:200

Storage Instruction:

Store at -20°C. Avoid freeze / thaw cycles.

Alternative Names:

MCCRP2;SAK;STK18

SwissProt:

O00444

Gene ID:

10733 (human);

Calculated Molecular Weight:

104kDa/105kDa/108kDa

Purification:

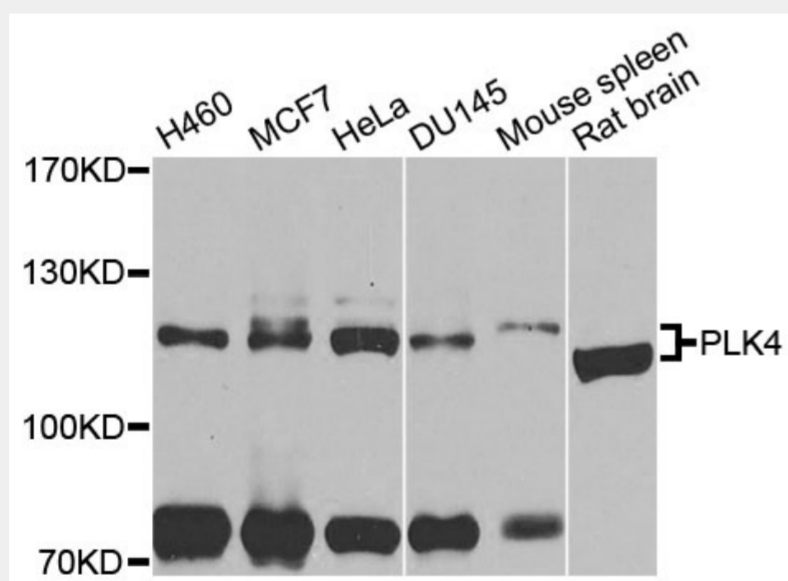
Affinity purification

Cellular Location:

Cleavage furrow,Cytoplasm,Nucleus,centriole,centrosome,cytoskeleton,microtubule organizing center,nucleolus,

Product Description

This gene encodes a member of the polo family of serine/threonine protein kinases. The protein localizes to centrioles, complex microtubule-based structures found in centrosomes, and regulates centriole duplication during the cell cycle. Three alternatively spliced transcript variants that encode different protein isoforms have been found for this gene.



Western blot analysis of extracts of various cell lines, using PLK4 antibody at 1:1000 dilution.

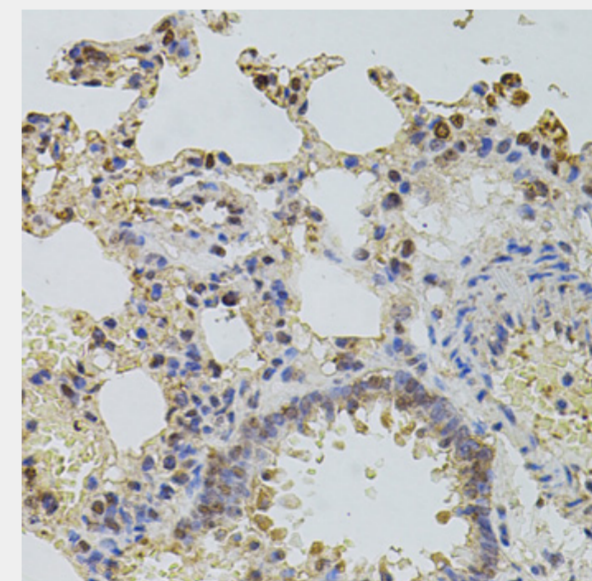
Secondary antibody: HRP Goat Anti-Rabbit IgG (H+L) at 1:10000 dilution.

Lysates/proteins: 25ug per lane.

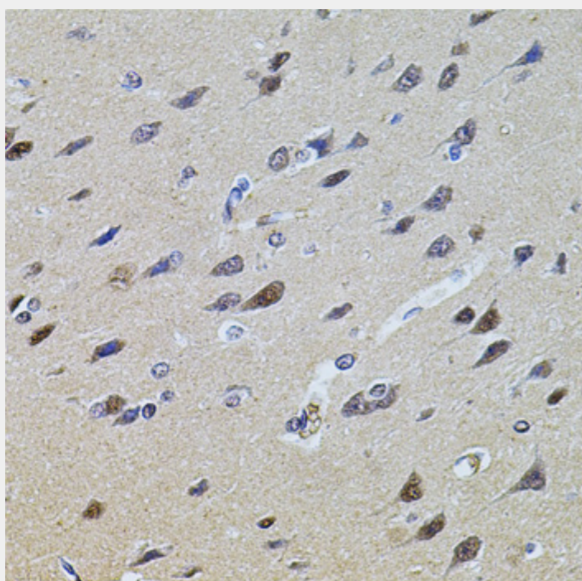
Blocking buffer: 3% nonfat dry milk in TBST.

Detection: ECL Basic Kit.

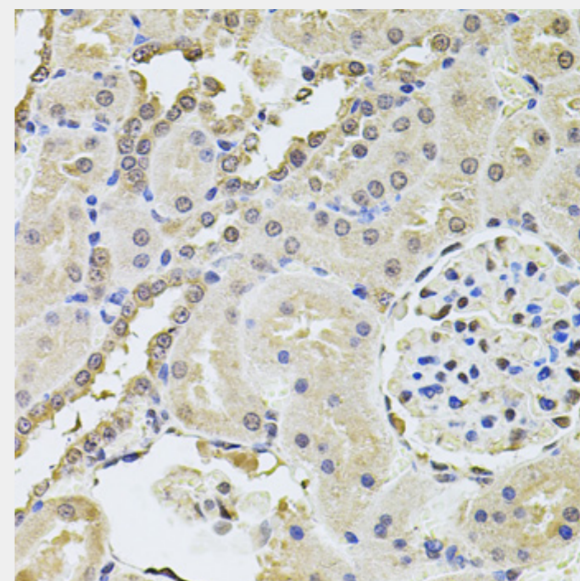
Exposure time: 15s.



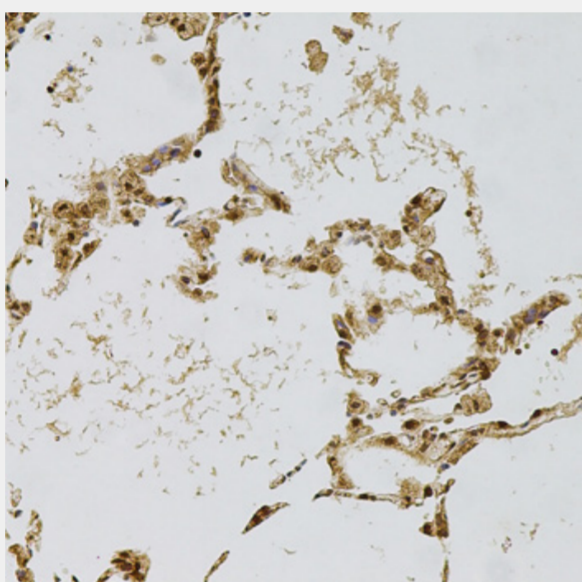
Immunohistochemistry of paraffin-embedded rat lung using PLK4 antibody at dilution of 1:100 (40x lens).



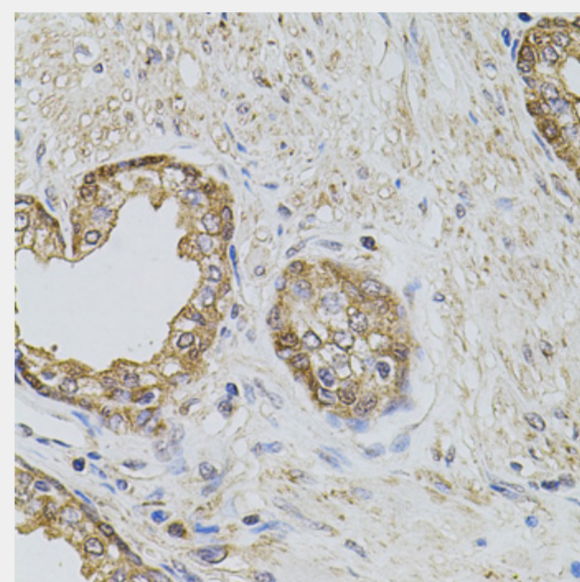
Immunohistochemistry of paraffin-embedded rat brain using PLK4 antibody at dilution of 1:100 (40x lens).



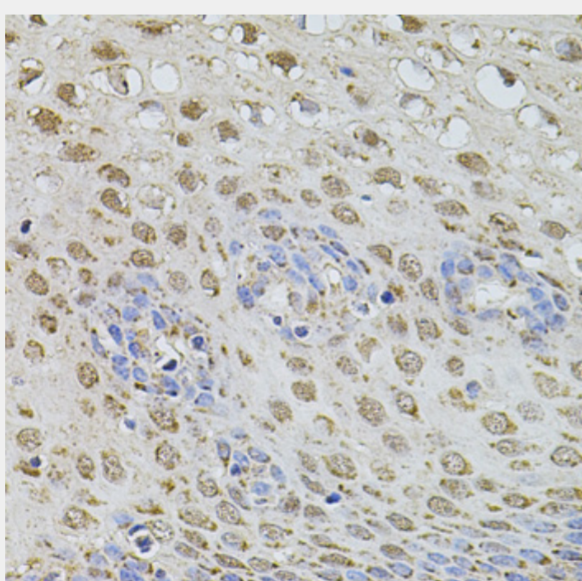
Immunohistochemistry of paraffin-embedded rat kidney using PLK4 antibody at dilution of 1:100 (40x lens).



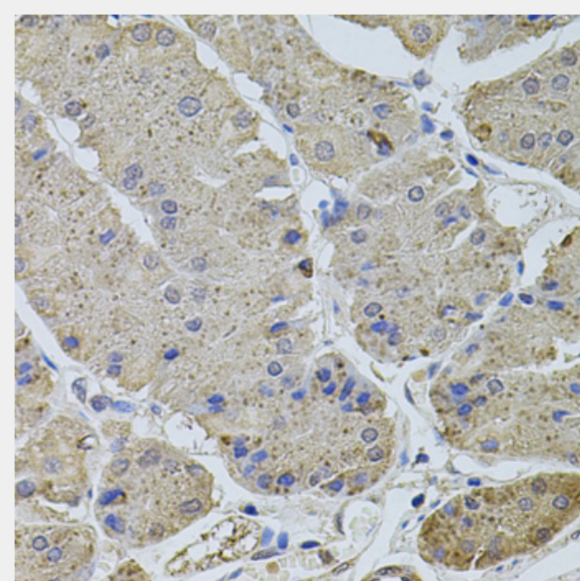
Immunohistochemistry of paraffin-embedded human lung using PLK4 antibody at dilution of 1:100 (20x lens).



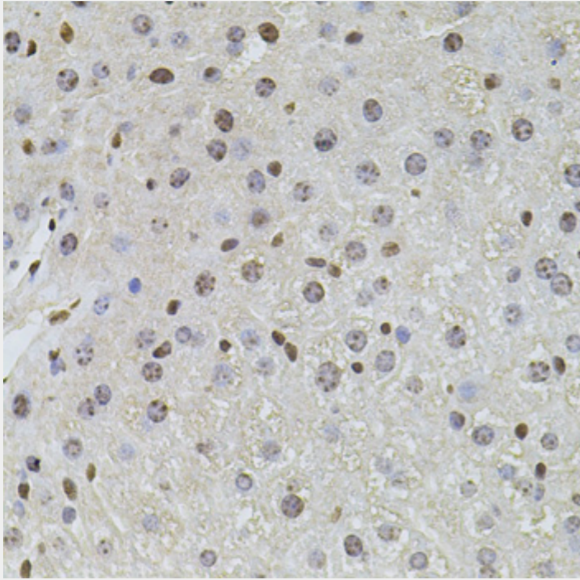
Immunohistochemistry of paraffin-embedded human prostate using PLK4 antibody at dilution of 1:100 (40x lens).



Immunohistochemistry of paraffin-embedded human esophagus using PLK4 antibody at dilution of 1:100 (40x lens).



Immunohistochemistry of paraffin-embedded human stomach using PLK4 antibody at dilution of 1:100 (40x lens).



Immunohistochemistry of paraffin-embedded mouse liver using PLK4 antibody at dilution of 1:100 (40x lens).

All products are for RESEARCH USE ONLY. Not for diagnostic & therapeutic purposes!