

Polyclonal Antibody to Hepatoma Derived Growth Factor (HDGF)

Catalog No: tcua6504



Available Sizes

Size: 20ul

Size: 100ul

Size: 200ul



Specifications

Application:

WB; IHC; ICC; IP.

Species Reactivity:

Homo sapiens (Human)

Host Species:

Rabbit

Immunogen / Amino acids:

Recombinant Hepatoma Derived Growth Factor (HDGF)

Conjugation:

Unconjugated

Clonality:

Polyclonal

Form:

Liquid

Storage Buffer:

0.01M PBS, pH7.4, containing 0.05% Proclin-300, 50% glycerol.

Recommended Dilution:

Western blotting: 0.5-5 μ g/mL

Immunohistochemistry: 5-20 μ g/mL

Immunocytochemistry: 5-20 μ g/mL

Optimal working dilutions must be determined by end user.

Alternative Names:

HMG1L2; High-Mobility Group Protein 1-Like 2

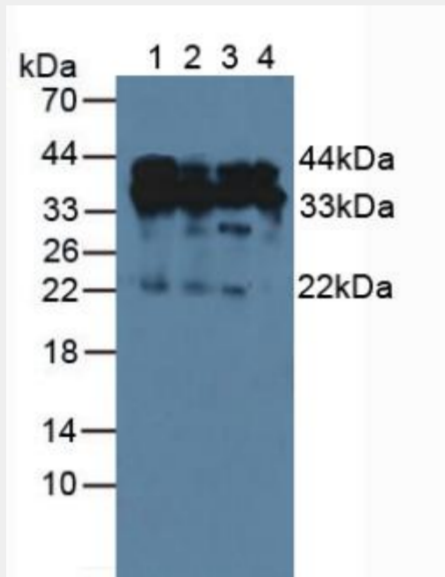


Figure. Western Blot; Sample: Lane1: Human HeLa Cells; Lane2: Human A549 Cells; Lane3: Human Jurkat Cells; Lane4: Human 293T Cells.)

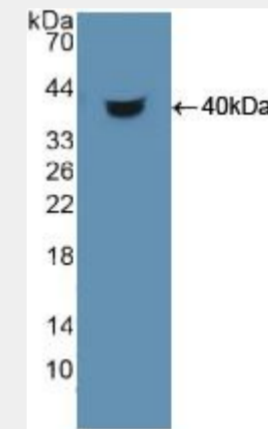


Figure. Western Blot; Sample: Recombinant HDGF, Human.)

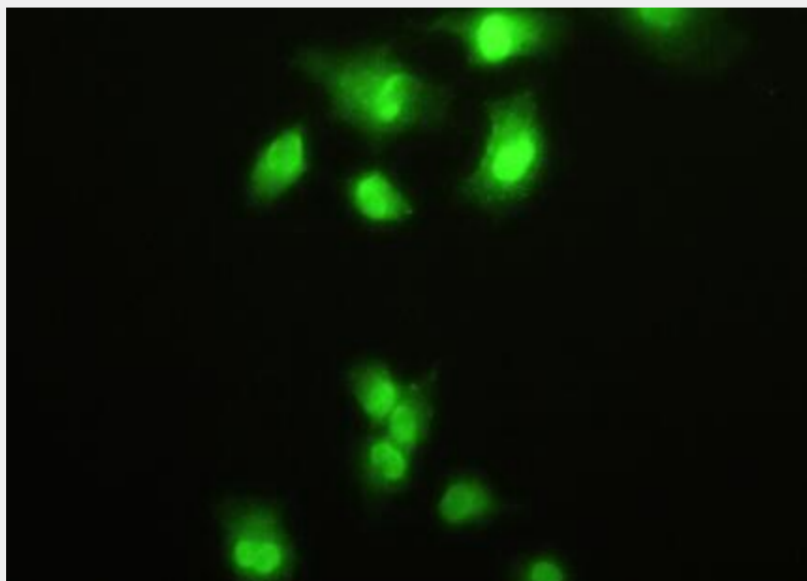


Figure:FITC staining on IHC-P
Simple: A549 cells.)

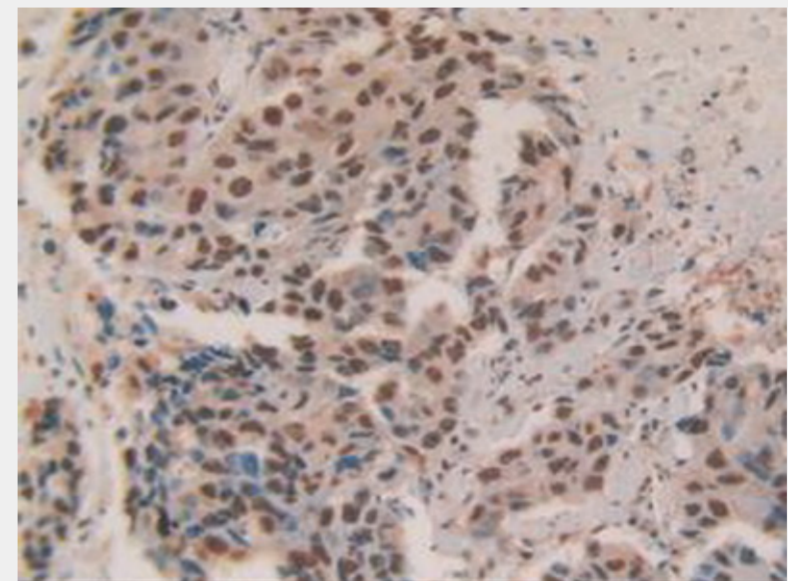


Figure. DAB staining on IHC-P;
Samples: Human Breast Cancer Tissue.)

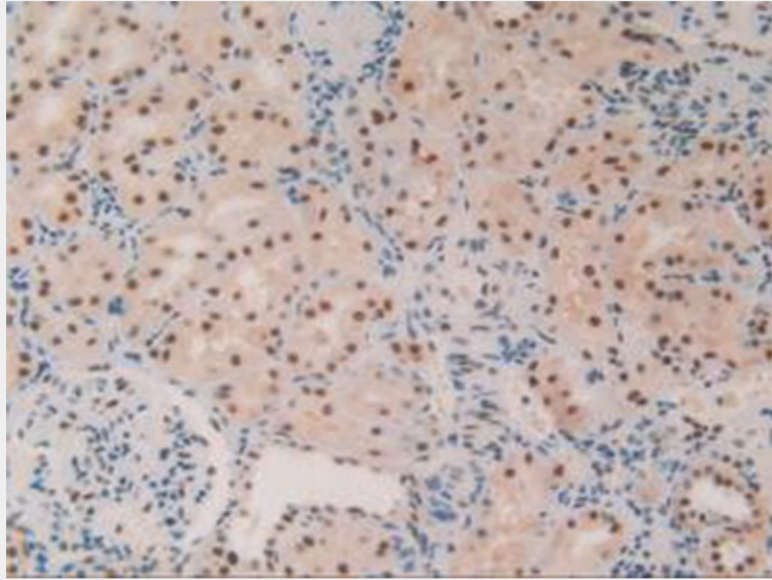


Figure. DAB staining on IHC-P;
Samples: Human Kidney Tissue.)

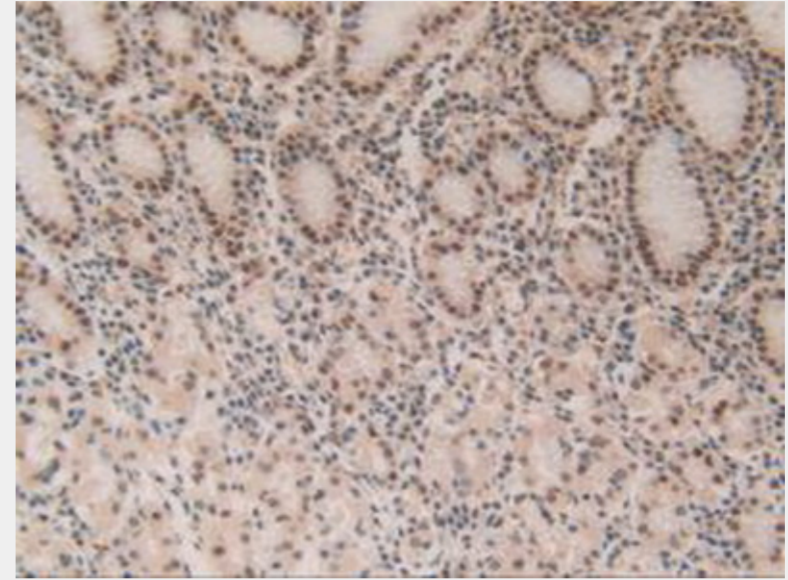


Figure. DAB staining on IHC-P;
Samples: Human Stomach Tissue.)

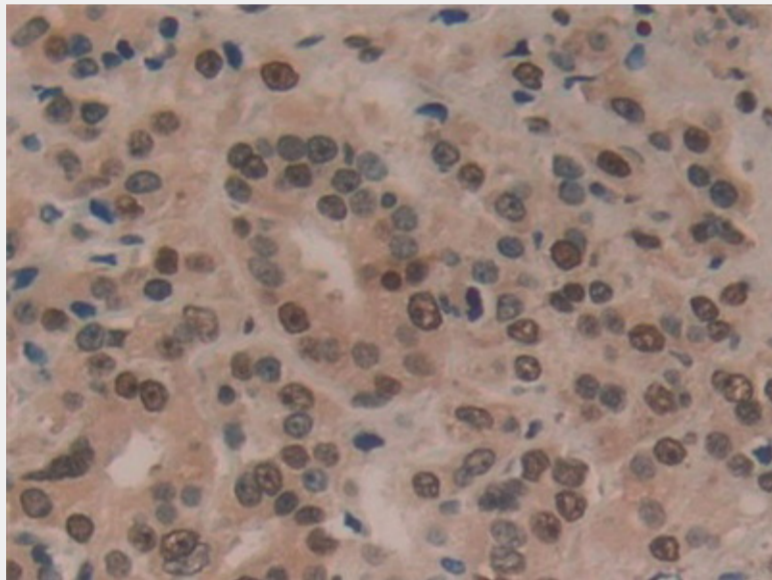


Figure. DAB staining on IHC-P; Samples: Human Prostate Gland Cancer Tissue.)

All products are for RESEARCH USE ONLY. Not for diagnostic & therapeutic purposes!