

TEFM Polyclonal Antibody

Catalog No: tcba12072



Available Sizes

Size: 50ul

Size: 100ul

Size: 200ul



Specifications

Application:

WB,IHC

Research Area:

Cell Biology,RNA Binding Protein(RBP),

Species Reactivity:

Human,Mouse,Rat

Host Species:

Rabbit

Isotype:

IgG

Form:

Liquid

Storage Buffer:

Buffer: PBS with 0.02% sodium azide, 50% glycerol, pH7.3.

Recommended Dilution:

WB 1:500 - 1:2000

IHC 1:50 - 1:200

Storage Instruction:

Store at -20°C. Avoid freeze / thaw cycles.

Alternative Names:

C17orf42

SwissProt:

Q96QE5

Gene ID:

79736 (human);

Calculated Molecular Weight:

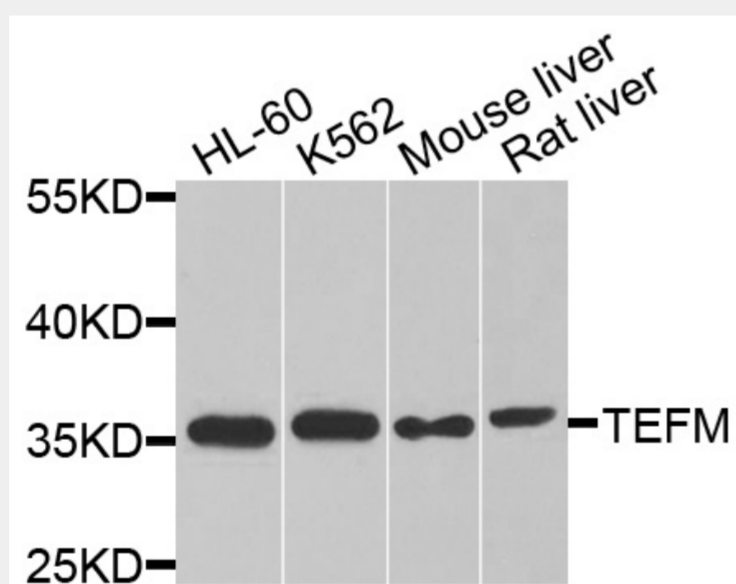
19kDa/41kDa

Purification:

Affinity purification

Cellular Location:

Mitochondrion matrix, mitochondrion nucleoid,



Western blot analysis of extracts of various cell lines, using TEFM antibody at 1:1000 dilution.

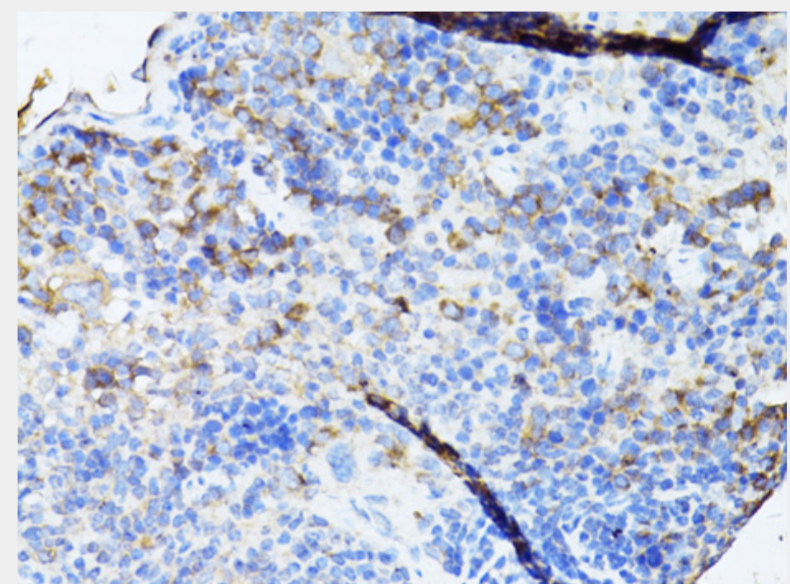
Secondary antibody: HRP Goat Anti-Rabbit IgG (H+L) at 1:10000 dilution.

Lysates/proteins: 25ug per lane.

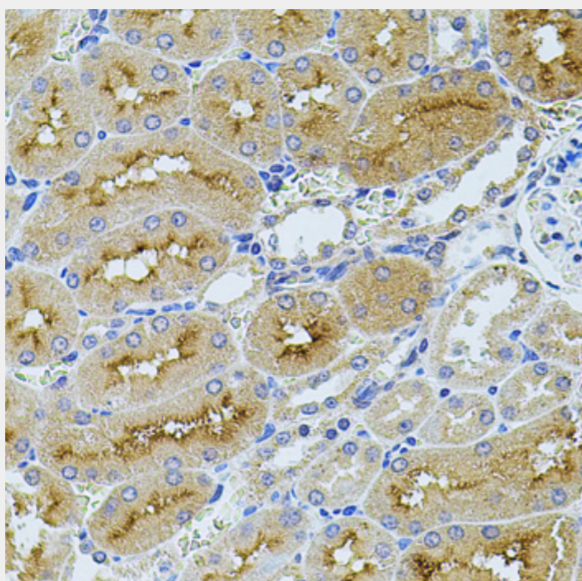
Blocking buffer: 3% nonfat dry milk in TBST.

Detection: ECL Basic Kit.

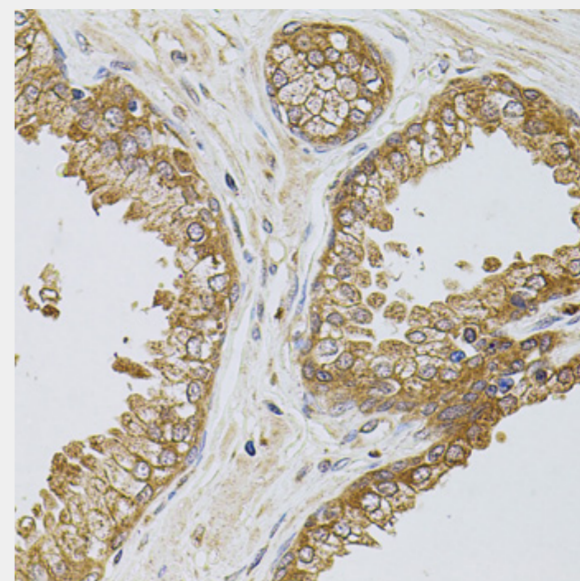
Exposure time: 90s.



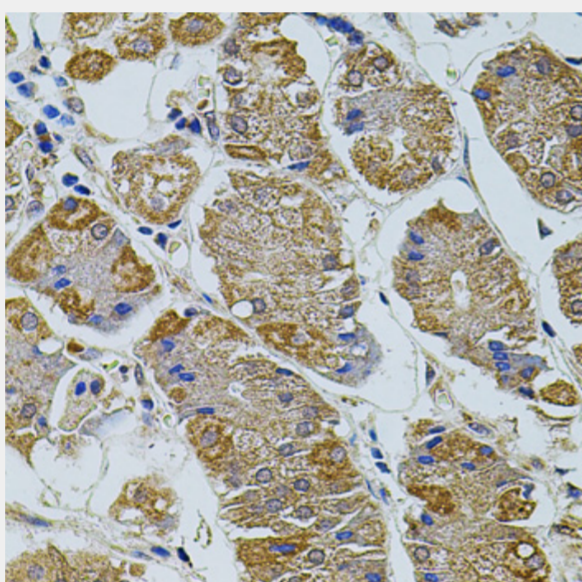
Immunohistochemistry of paraffin-embedded mouse spleen using TEFM antibody at dilution of 1:100 (40x lens).



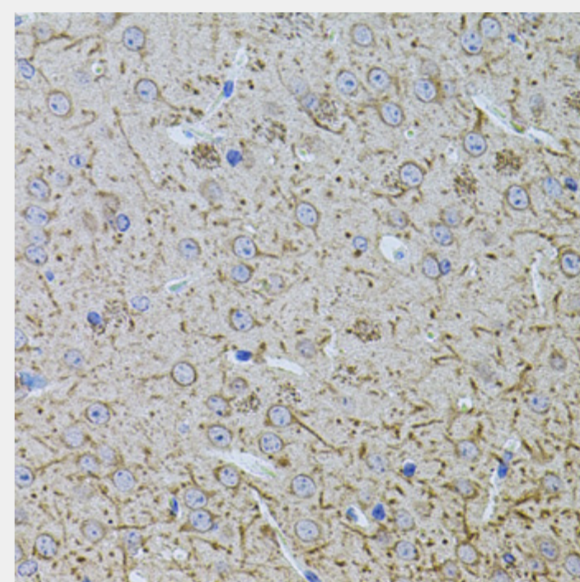
Immunohistochemistry of paraffin-embedded rat kidney using TEFM antibody at dilution of 1:100 (40x lens).



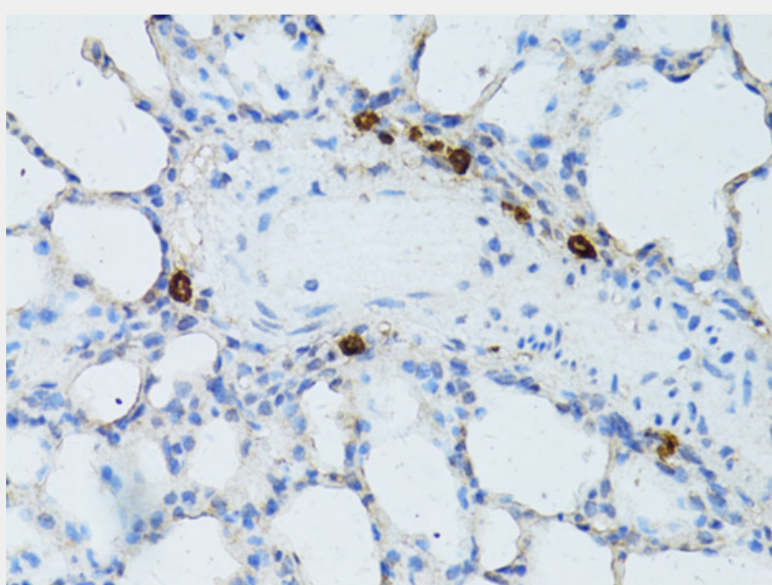
Immunohistochemistry of paraffin-embedded human prostate using TEFM antibody at dilution of 1:100 (40x lens).



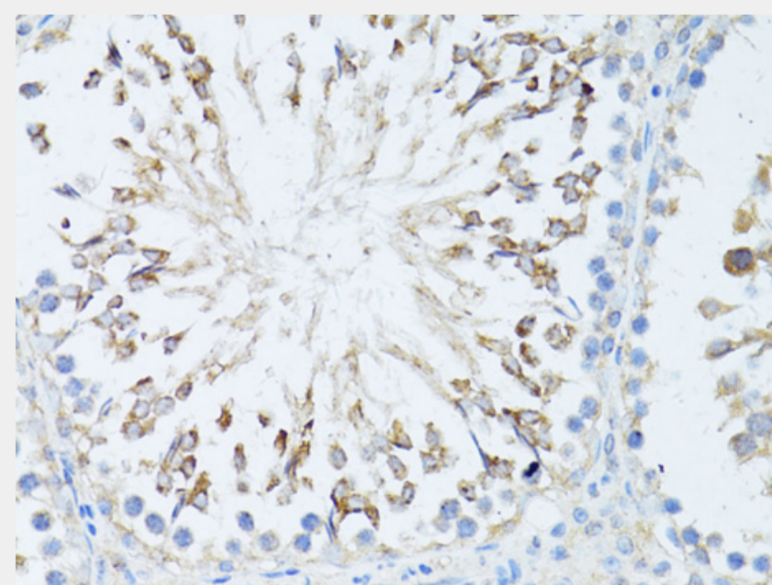
Immunohistochemistry of paraffin-embedded human stomach using TEFM antibody at dilution of 1:100 (40x lens).



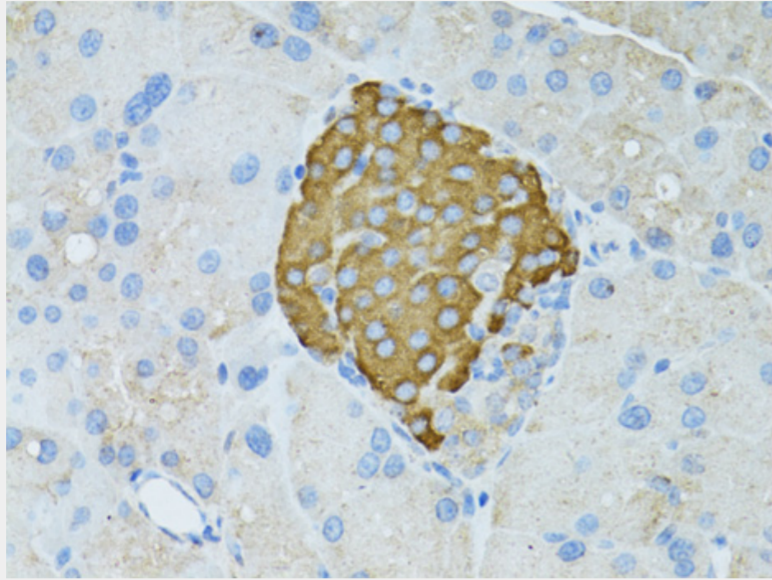
Immunohistochemistry of paraffin-embedded mouse brain using TEFM antibody at dilution of 1:100 (40x lens).



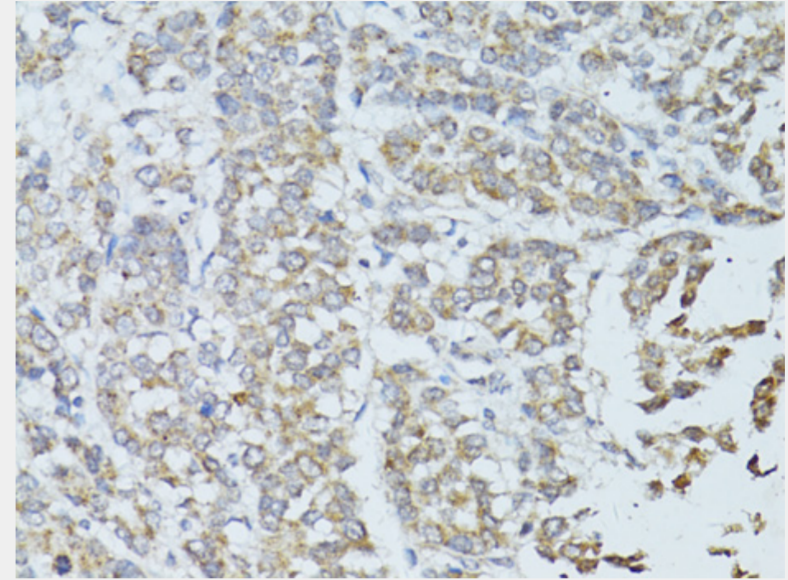
Immunohistochemistry of paraffin-embedded rat lung using TEFM antibody at dilution of 1:100 (40x lens).



Immunohistochemistry of paraffin-embedded rat testis using TEFM antibody at dilution of 1:100 (40x lens).



Immunohistochemistry of paraffin-embedded rat pancreas using TEFM antibody at dilution of 1:100 (40x lens).



Immunohistochemistry of paraffin-embedded human colon carcinoma using TEFM antibody at dilution of 1:100 (40x lens).

All products are for RESEARCH USE ONLY. Not for diagnostic & therapeutic purposes!