

# Polyclonal Antibody to Glutathione S Transferase Mu 4 (GSTm4)

Catalog No: tcua6459



## Available Sizes

Size: 20ul

Size: 100ul

Size: 200ul



## Specifications

### Application:

WB; IHC; ICC; IP.

### Species Reactivity:

Rattus norvegicus (Rat)

### Host Species:

Rabbit

### Conjugation:

Unconjugated

### Clonality:

Polyclonal

### Form:

Liquid

### Storage Buffer:

PBS, pH7.4, containing 0.02% NaN<sub>3</sub>, 50% glycerol.

### Recommended Dilution:

Western blotting: 0.2-2µg/mL;1:250-2500

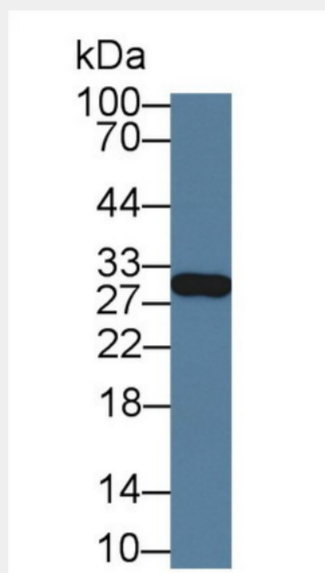
Immunohistochemistry: 5-20µg/mL;1:25-100

Immunocytochemistry: 5-20µg/mL;1:25-100

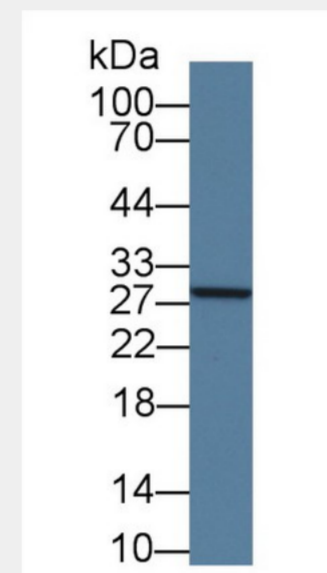
Optimal working dil

**Alternative Names:**

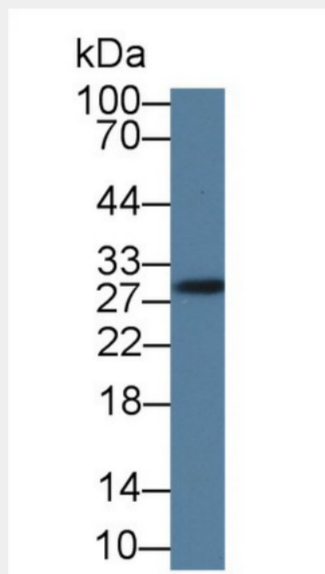
GST-M4; GSTM4-4; GTM4



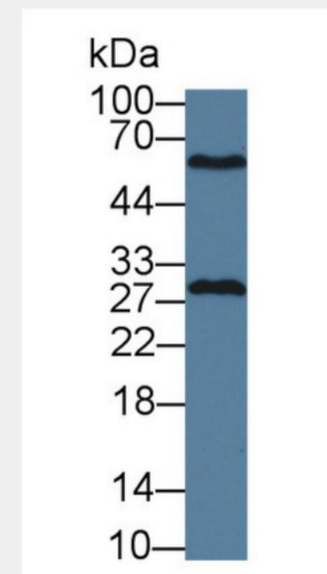
Western Blot; Sample: Rat Liver lysate; Primary Ab: 1 $\mu$ g/ml Rabbit Anti-Rat GSTm4 Antibody Second Ab: 0.2 $\mu$ g/mL HRP-Linked Caprine Anti-Rabbit IgG Polyclonal Antibody (Catalog: SAA544Rb19)



Western Blot; Sample: Rat Lung lysate; Primary Ab: 1 $\mu$ g/ml Rabbit Anti-Rat GSTm4 Antibody Second Ab: 0.2 $\mu$ g/mL HRP-Linked Caprine Anti-Rabbit IgG Polyclonal Antibody Catalog: SAA544Rb19)



Western Blot; Sample: Rat Heart lysate; Primary Ab: 1 $\mu$ g/ml Rabbit Anti-Rat GSTm4 Antibody Second Ab: 0.2 $\mu$ g/mL HRP-Linked Caprine Anti-Rabbit IgG Polyclonal Antibody Catalog: SAA544Rb19)



Western Blot; Sample: Rat Cerebrum lysate; Primary Ab: 1 $\mu$ g/ml Rabbit Anti-Rat GSTm4 Antibody Second Ab: 0.2 $\mu$ g/mL HRP-Linked Caprine Anti-Rabbit IgG Polyclonal Antibody Catalog: SAA544Rb19)

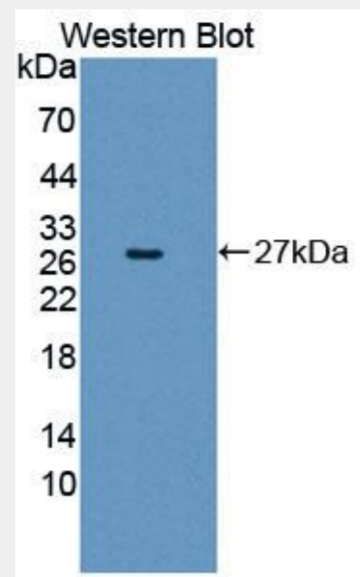
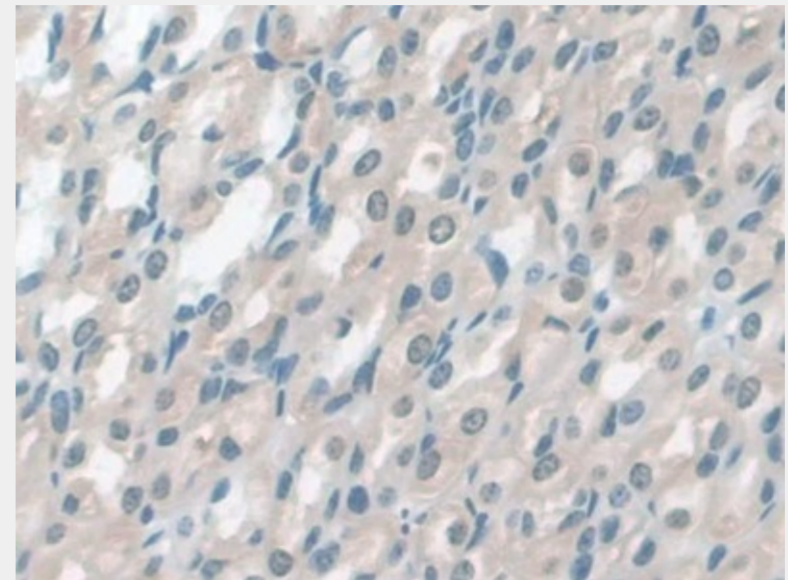
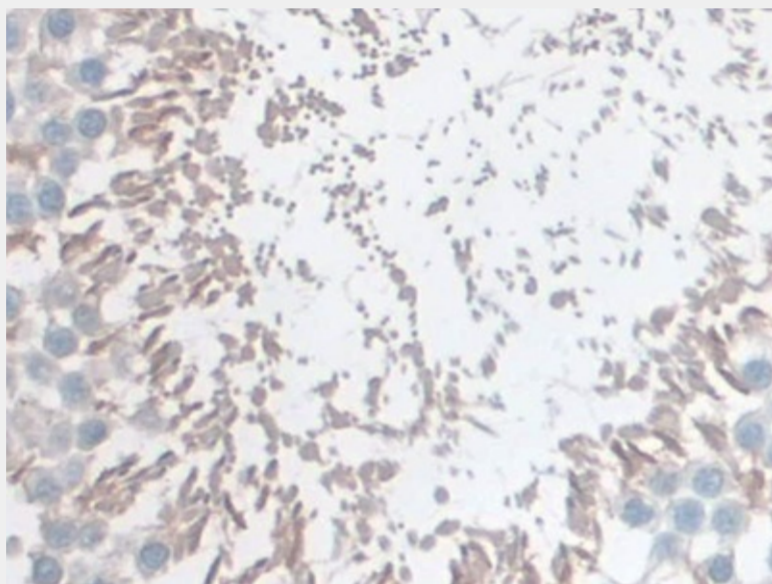


Figure. Western Blot; Sample: Recombinant protein.)



DAB staining on IHC-P;  
Samples: Rat Stomach Tissue)



Used in DAB staining on formalin fixed paraffin- embedded Kidney tissue)

All products are for RESEARCH USE ONLY. Not for diagnostic & therapeutic purposes!