

# CBL Polyclonal Antibody

Catalog No: tcba11517



## Available Sizes

**Size:** 50ul

**Size:** 100ul

**Size:** 200ul



## Specifications

**Application:**

WB,IHC

**Research Area:**

Cancer,Cell Biology,

**Species Reactivity:**

Human,Mouse,Rat

**Host Species:**

Rabbit

**Isotype:**

IgG

**Form:**

Liquid

**Storage Buffer:**

Buffer: PBS with 0.02% sodium azide, 50% glycerol, pH7.3.

**Recommended Dilution:**

WB 1:500 - 1:2000

IHC 1:50 - 1:100

**Storage Instruction:**

Store at -20°C. Avoid freeze / thaw cycles.

**Alternative Names:**

C-CBL;CBL2;FRA11B;NSLL;RNF55

**SwissProt:**

P22681

**Gene ID:**

867 (human);

**Calculated Molecular Weight:**

99kDa

**Purification:**

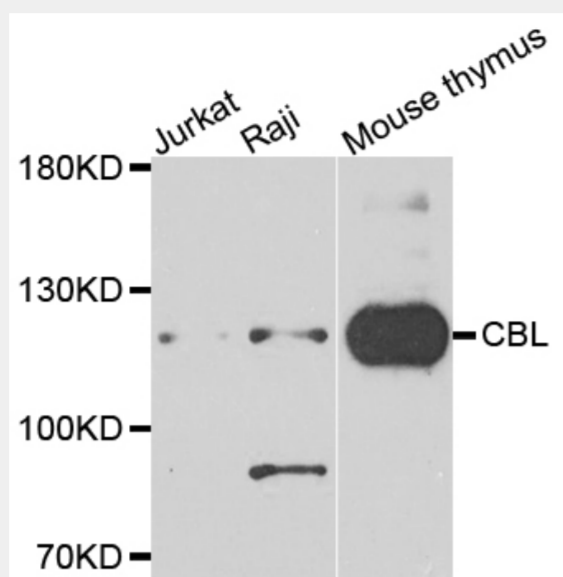
Affinity purification

**Cellular Location:**

Cell membrane,Cytoplasm,

**Product Description**

This gene is a proto-oncogene that encodes a RING finger E3 ubiquitin ligase. The encoded protein is one of the enzymes required for targeting substrates for degradation by the proteasome. This protein mediates the transfer of ubiquitin from ubiquitin conjugating enzymes (E2) to specific substrates. This protein also contains an N-terminal phosphotyrosine binding domain that allows it to interact with numerous tyrosine-phosphorylated substrates and target them for proteasome degradation. As such it functions as a negative regulator of many signal transduction pathways. This gene has been found to be mutated or translocated in many cancers including acute myeloid leukaemia, and expansion of CGG repeats in the 5' UTR has been associated with Jacobsen syndrome. Mutations in this gene are also the cause of Noonan syndrome-like disorder.



Western blot analysis of extracts of various cell lines, using CBL antibody at 1:1000 dilution.

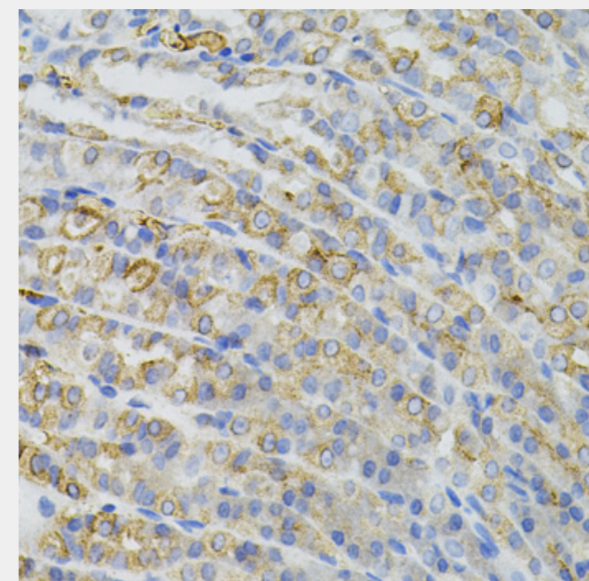
Secondary antibody: HRP Goat Anti-Rabbit IgG (H+L) at 1:10000 dilution.

Lysates/proteins: 25ug per lane.

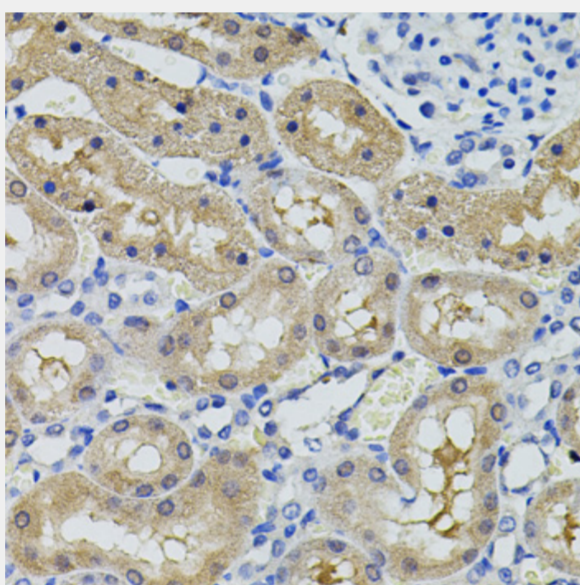
Blocking buffer: 3% nonfat dry milk in TBST.

Detection: ECL Enhanced Kit.

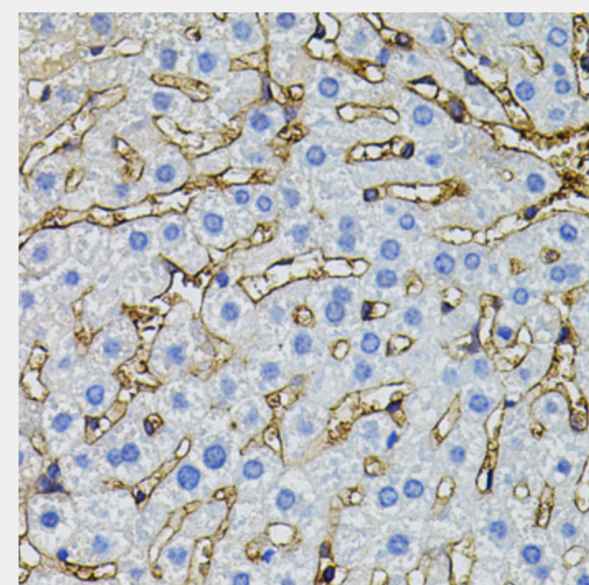
Exposure time: 90s.



Immunohistochemistry of paraffin-embedded mouse stomach using CBL antibody (40x lens).



Immunohistochemistry of paraffin-embedded rat kidney using CBL antibody (40x lens).



Immunohistochemistry of paraffin-embedded mouse liver using CBL antibody (40x lens).

All products are for RESEARCH USE ONLY. Not for diagnostic & therapeutic purposes!