

SUZ12 Polyclonal Antibody

Catalog No: tcba11428

KO VALIDATED



Available Sizes

Size: 50ul

Size: 100ul

Size: 200ul



Specifications

Application:

WB,IHC,IP

Research Area:

Chromatin Remodeling,

Species Reactivity:

Human,Mouse,Rat

Host Species:

Rabbit

Isotype:

IgG

Form:

Liquid

Storage Buffer:

Buffer: PBS with 0.02% sodium azide, 50% glycerol, pH7.3.

Recommended Dilution:

WB 1:500 - 1:2000

IHC 1:50 - 1:200

IP 1:50 - 1:100

Storage Instruction:

Store at -20°C. Avoid freeze / thaw cycles.

Alternative Names:

CHET9;JAZ1

SwissProt:

Q15022

Gene ID:

23512 (human);

Calculated Molecular Weight:

83kDa

Purification:

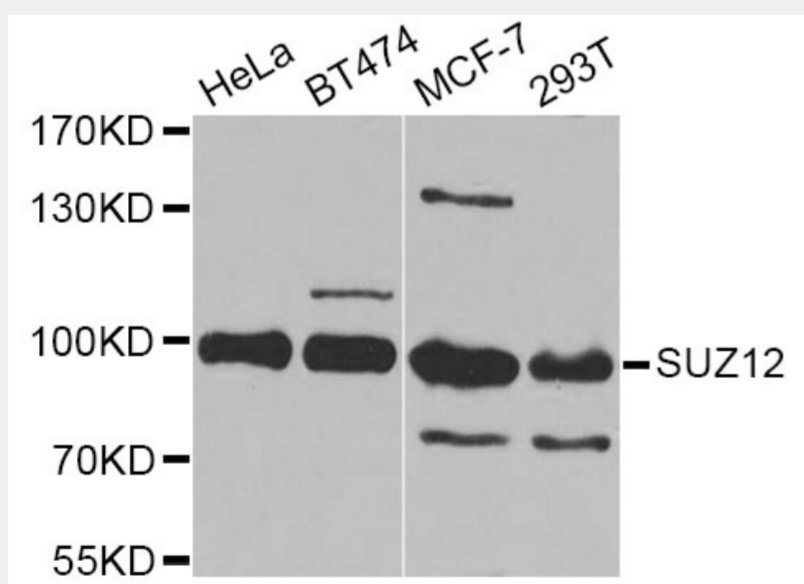
Affinity purification

Cellular Location:

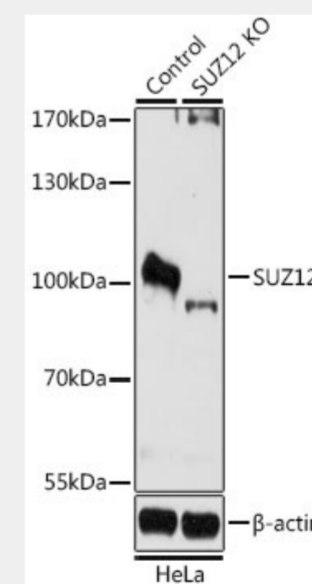
Nucleus,

Product Description

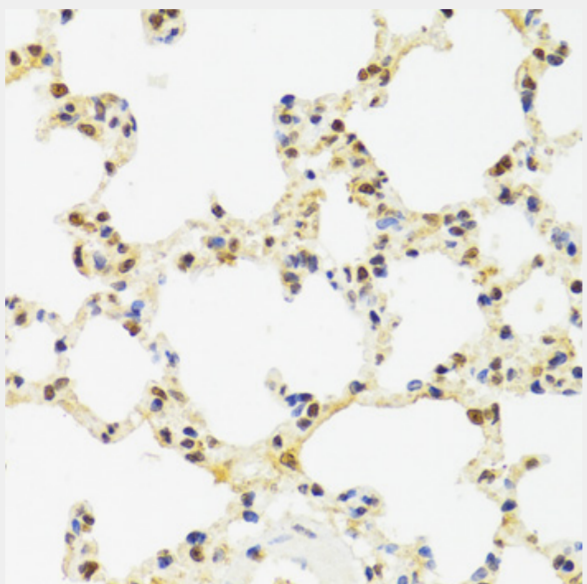
This zinc finger gene has been identified at the breakpoints of a recurrent chromosomal translocation reported in endometrial stromal sarcoma. Recombination of these breakpoints results in the fusion of this gene and JAZF1. The protein encoded by this gene contains a zinc finger domain in the C terminus of the coding region.



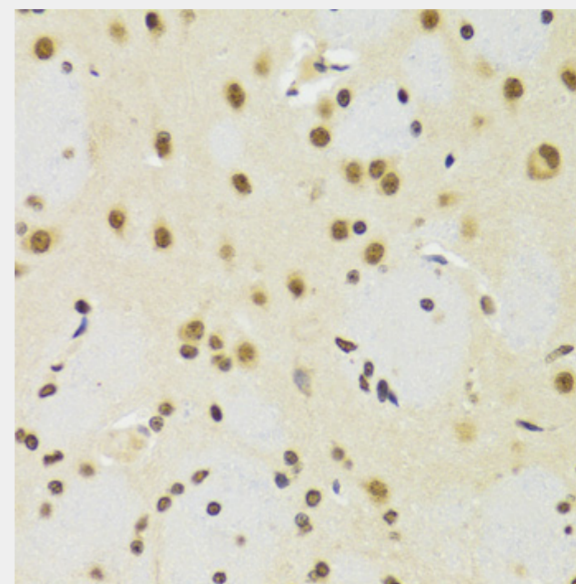
Western blot analysis of extracts of various cell lines, using SUZ12 Antibody at 1:1000 dilution.
Secondary antibody: HRP Goat Anti-Rabbit IgG (H+L) at 1:10000 dilution.
Lysates/proteins: 25ug per lane.
Blocking buffer: 3% nonfat dry milk in TBST.
Detection: ECL Basic Kit.
Exposure time: 90s.



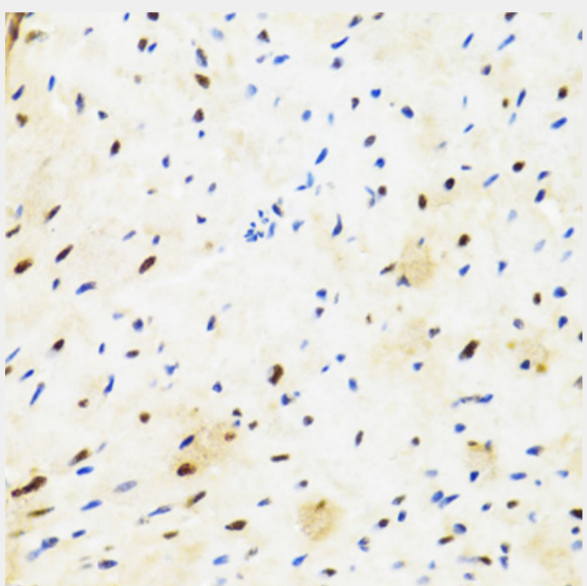
Western blot analysis of extracts from normal (control) and SUZ12 knockout (KO) HeLa cells, using SUZ12 antibody at 1:1000 dilution.
Secondary antibody: HRP Goat Anti-Rabbit IgG (H+L) at 1:10000 dilution.
Lysates/proteins: 25ug per lane.
Blocking buffer: 3% nonfat dry milk in TBST.
Detection: ECL Basic Kit.
Exposure time: 90s.



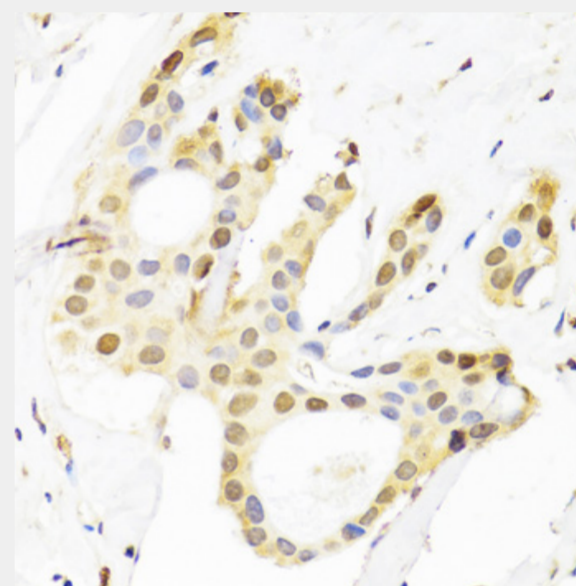
Immunohistochemistry of paraffin-embedded rat lung using SUZ12 antibody at dilution of 1:100 (40x lens).



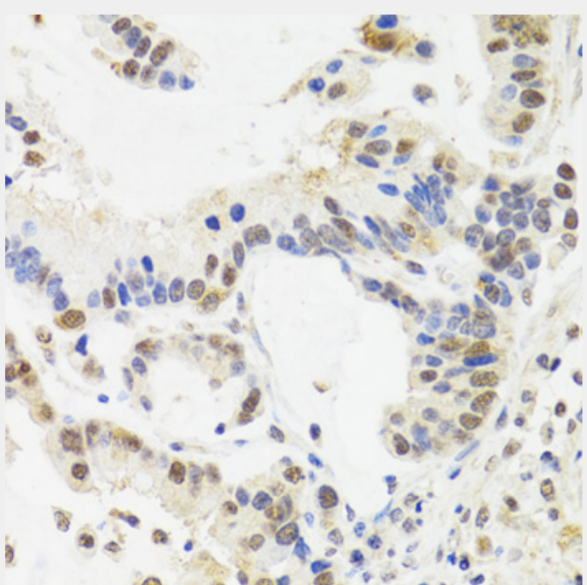
Immunohistochemistry of paraffin-embedded rat brain using SUZ12 antibody at dilution of 1:100 (40x lens).



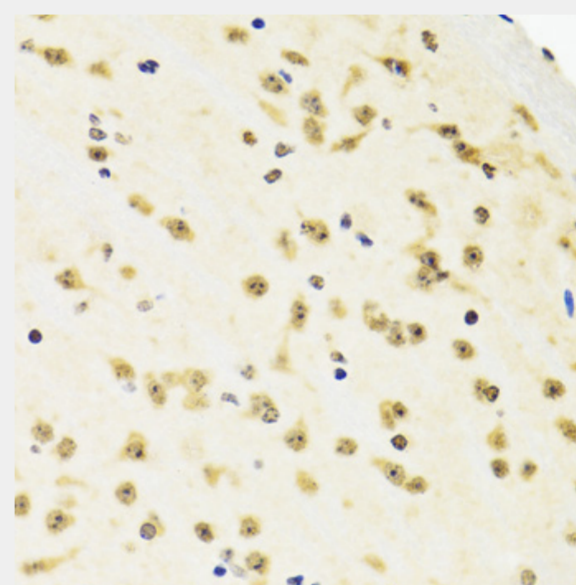
Immunohistochemistry of paraffin-embedded rat heart using SUZ12 antibody at dilution of 1:100 (40x lens).



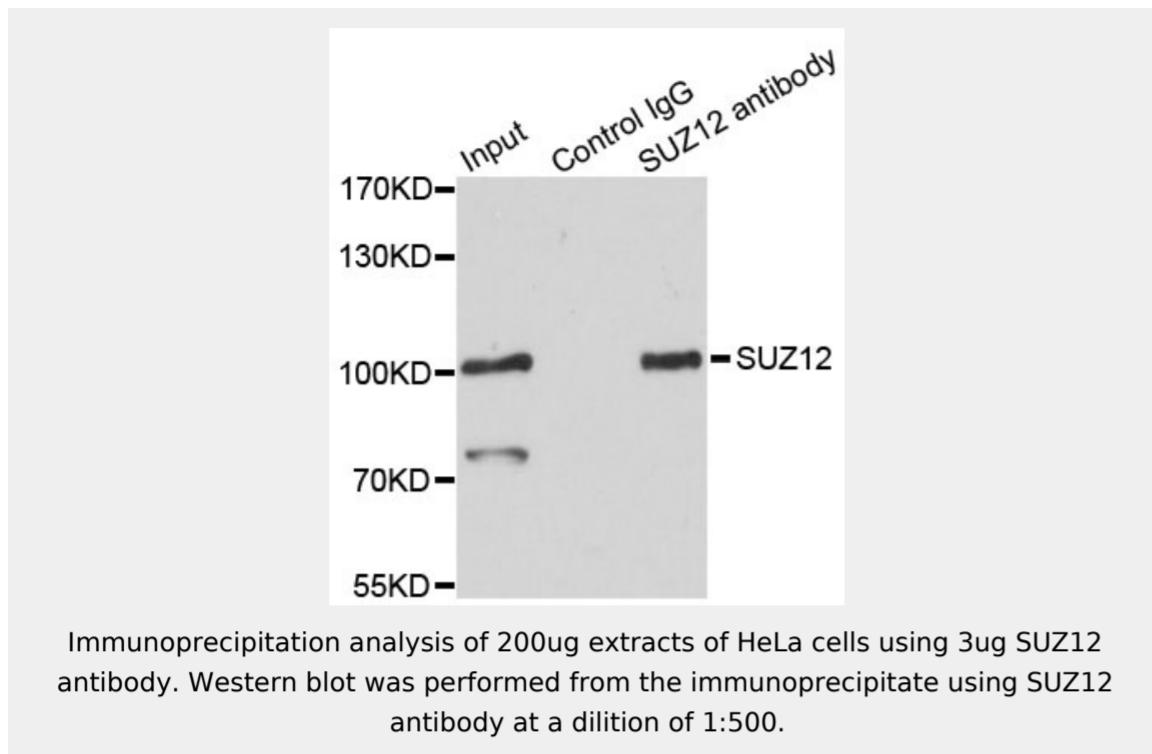
Immunohistochemistry of paraffin-embedded human breast cancer using SUZ12 antibody at dilution of 1:100 (40x lens).



Immunohistochemistry of paraffin-embedded human gastric cancer using SUZ12 antibody at dilution of 1:100 (40x lens).



Immunohistochemistry of paraffin-embedded mouse brain using SUZ12 antibody at dilution of 1:100 (40x lens).



All products are for RESEARCH USE ONLY. Not for diagnostic & therapeutic purposes!