

# PFKL Polyclonal Antibody

Catalog No: tcba11354



## Available Sizes

**Size:** 50ul

**Size:** 100ul

**Size:** 200ul



## Specifications

**Application:**

WB

**Research Area:**

Cancer, Metabolism,

**Species Reactivity:**

Human, Mouse

**Host Species:**

Rabbit

**Isotype:**

IgG

**Form:**

Liquid

**Storage Buffer:**

Buffer: PBS with 0.02% sodium azide, 50% glycerol, pH7.3.

**Recommended Dilution:**

WB 1:500 - 1:2000

**Storage Instruction:**

Store at -20°C. Avoid freeze / thaw cycles.

**Alternative Names:**

ATP-PFK;PFK-B;PFK-L

**SwissProt:**

P17858

**Gene ID:**

5211 (human);

**Calculated Molecular Weight:**

85kDa/90kDa

**Purification:**

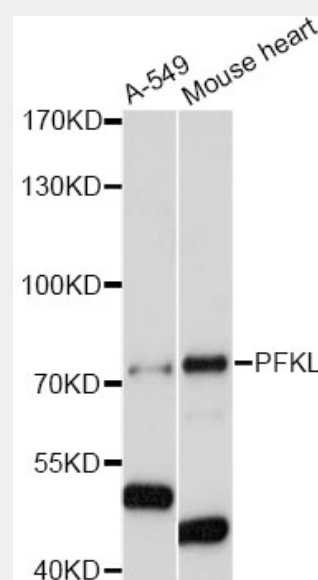
Affinity purification

**Cellular Location:**

Cytoplasm,

**Product Description**

PFKL polyclonal antibody gene encodes the liver (L) subunit of an enzyme that catalyzes the conversion of D-fructose 6-phosphate to D-fructose 1,6-bisphosphate, which is a key step in glucose metabolism (glycolysis). This enzyme is a tetramer that may be composed of different subunits encoded by distinct genes in different tissues. Alternative splicing results in multiple transcript variants.



Western blot analysis of extracts of various cell lines, using PFKL antibody at 1:1000 dilution.

Secondary antibody: HRP Goat Anti-Rabbit IgG (H+L) at 1:10000 dilution.

Lysates/proteins: 25ug per lane.

Blocking buffer: 3% nonfat dry milk in TBST.

Detection: ECL Basic Kit.

Exposure time: 5s.

All products are for RESEARCH USE ONLY. Not for diagnostic & therapeutic purposes!