

YBX1 Polyclonal Antibody

Catalog No: tcba11351

KO VALIDATED



Available Sizes

Size: 50ul

Size: 100ul

Size: 200ul



Specifications

Application:

WB,IHC,IF

Research Area:

Stem cells, RNA Binding Protein(RBP), Epigenetics,

Species Reactivity:

Human, Mouse, Rat

Host Species:

Rabbit

Isotype:

IgG

Form:

Liquid

Storage Buffer:

Buffer: PBS with 0.02% sodium azide, 50% glycerol, pH7.3.

Recommended Dilution:

WB 1:500 - 1:2000

IHC 1:100 - 1:200

IF 1:50 - 1:200

Storage Instruction:

Store at -20°C. Avoid freeze / thaw cycles.

Alternative Names:

BP-8;CBF-A;CSDA2;CSDB;DBPB;EFI-A;MDR-NF1;NSEP-1;NSEP1;YB-1;YB1

SwissProt:

P67809

Gene ID:

4904 (human);

Calculated Molecular Weight:

35kDa

Purification:

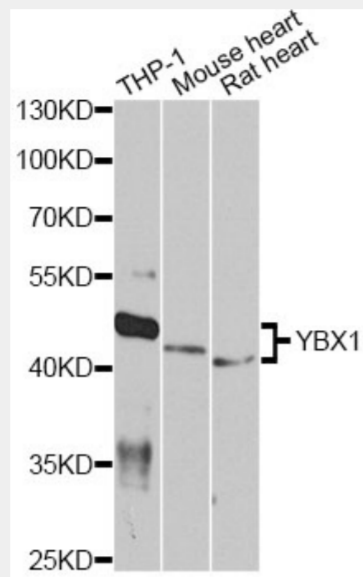
Affinity purification

Cellular Location:

Cytoplasm,Cytoplasmic granule,Nucleus,Secreted,

Product Description

This gene encodes a highly conserved cold shock domain protein that has broad nucleic acid binding properties. The encoded protein functions as both a DNA and RNA binding protein and has been implicated in numerous cellular processes including regulation of transcription and translation, pre-mRNA splicing, DNA reparation and mRNA packaging. This protein is also a component of messenger ribonucleoprotein (mRNP) complexes and may have a role in microRNA processing. This protein can be secreted through non-classical pathways and functions as an extracellular mitogen. Aberrant expression of the gene is associated with cancer proliferation in numerous tissues. This gene may be a prognostic marker for poor outcome and drug resistance in certain cancers. Alternate splicing results in multiple transcript variants. Pseudogenes of this gene are found on multiple chromosomes.



Western blot analysis of extracts of various cell lines, using YBX1 antibody at 1:1000 dilution.

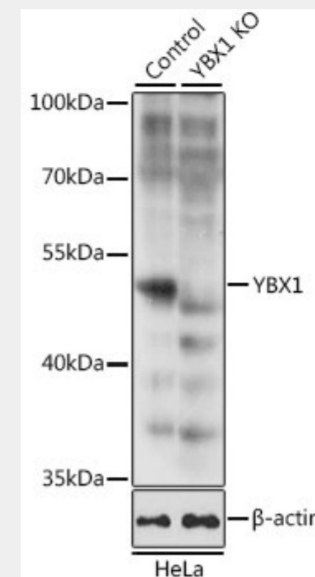
Secondary antibody: HRP Goat Anti-Rabbit IgG (H+L) at 1:10000 dilution.

Lysates/proteins: 25ug per lane.

Blocking buffer: 3% nonfat dry milk in TBST.

Detection: ECL Basic Kit.

Exposure time: 90s.



Western blot analysis of extracts from normal (control) and YBX1 knockout (KO) HeLa cells, using YBX1 antibody at 1:1000 dilution.

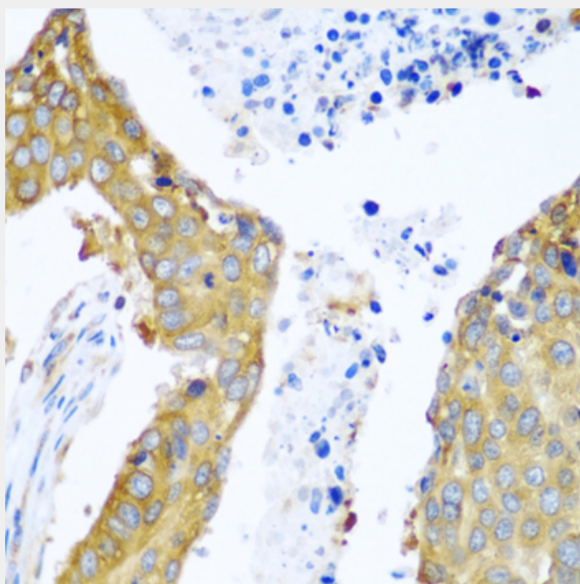
Secondary antibody: HRP Goat Anti-Rabbit IgG (H+L) at 1:10000 dilution.

Lysates/proteins: 25ug per lane.

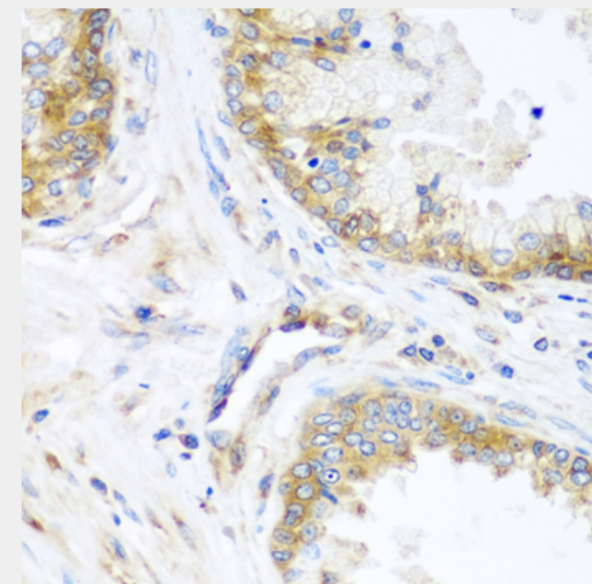
Blocking buffer: 3% nonfat dry milk in TBST.

Detection: ECL Basic Kit.

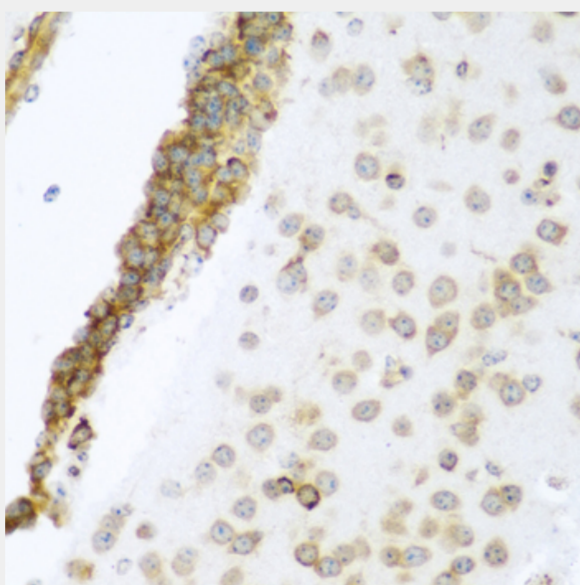
Exposure time: 5s.



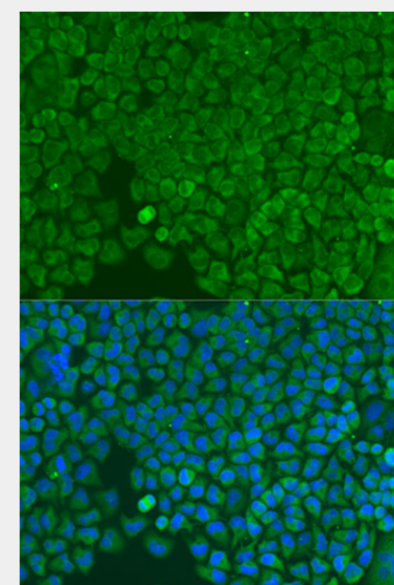
Immunohistochemistry of paraffin-embedded human lung cancer using YBX1 antibody at dilution of 1:100 (40x lens).



Immunohistochemistry of paraffin-embedded human prostate using YBX1 antibody at dilution of 1:100 (40x lens).



Immunohistochemistry of paraffin-embedded mouse brain using YBX1 antibody at dilution of 1:100 (40x lens).



Immunofluorescence analysis of U2OS cells using YBX1 antibody at dilution of 1:100. Blue: DAPI for nuclear staining.

All products are for RESEARCH USE ONLY. Not for diagnostic & therapeutic purposes!