

# RSRC1 Polyclonal Antibody

Catalog No: tcba10897



## Available Sizes

---

**Size:** 50ul

---

**Size:** 100ul

---

**Size:** 200ul

---



## Specifications

---

**Application:**

WB,IHC,IF

---

**Research Area:**

,

---

**Species Reactivity:**

Human,Mouse,Rat

---

**Host Species:**

Rabbit

---

**Isotype:**

IgG

---

**Form:**

Liquid

---

**Storage Buffer:**

Buffer: PBS with 0.02% sodium azide, 50% glycerol, pH7.3.

---

**Recommended Dilution:**

WB 1:500 - 1:2000

IHC 1:50 - 1:100

IF 1:50 - 1:100

---

**Storage Instruction:**

Store at -20°C. Avoid freeze / thaw cycles.

**Alternative Names:**

BM-011;SFRS21;SRrp53

**SwissProt:**

Q96IZ7

**Gene ID:**

51319 (human);

**Calculated Molecular Weight:**

31kDa/38kDa

**Purification:**

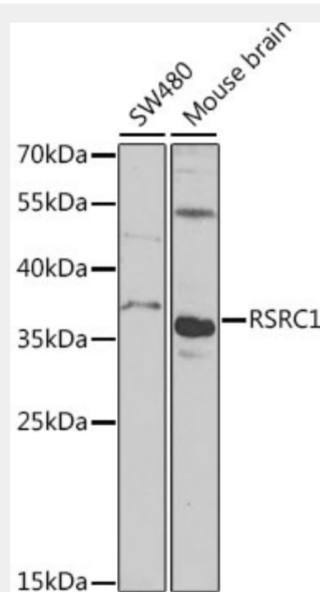
Affinity purification

**Cellular Location:**

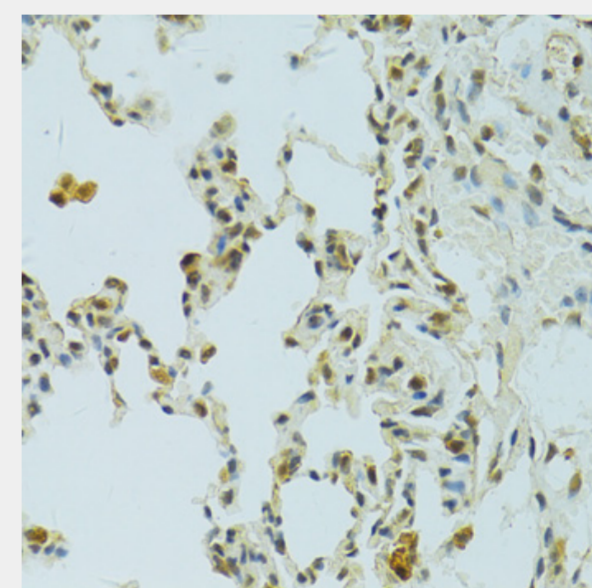
Cytoplasm,Nucleus,Nucleus speckle,

**Product Description**

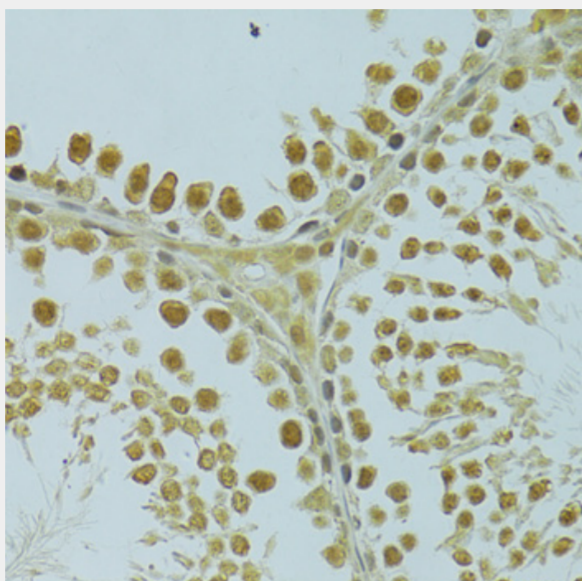
This gene encodes a member of the serine and arginine rich-related protein family. The encoded protein is involved in both constitutive and alternative mRNA splicing. This gene may be associated with schizophrenia. A pseudogene of this gene is located on chromosome 9. Alternative splicing results in multiple transcript variants encoding different isoforms.



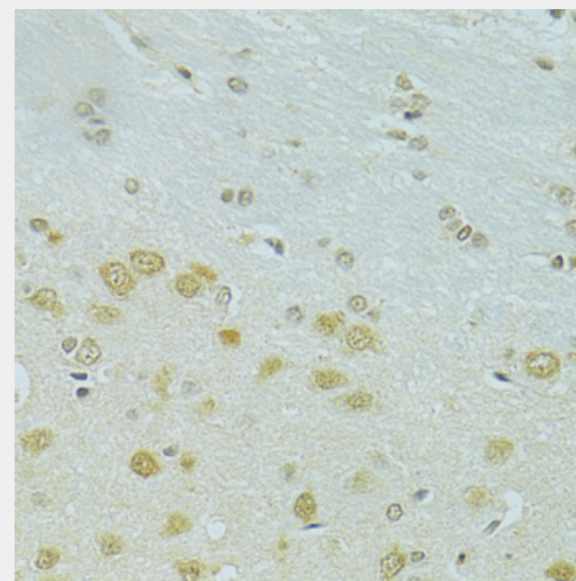
Western blot analysis of extracts of various cell lines, using RSRC1 antibody at 1:1000 dilution.  
Secondary antibody: HRP Goat Anti-Rabbit IgG (H+L) at 1:10000 dilution.  
Lysates/proteins: 25ug per lane.  
Blocking buffer: 3% nonfat dry milk in TBST.  
Detection: ECL Basic Kit.  
Exposure time: 90s.



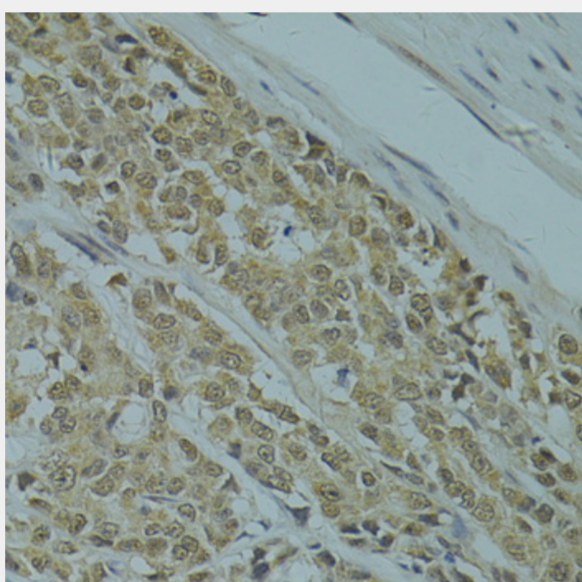
Immunohistochemistry of paraffin-embedded rat lung using RSRC1 antibody at dilution of 1:100 (40x lens).



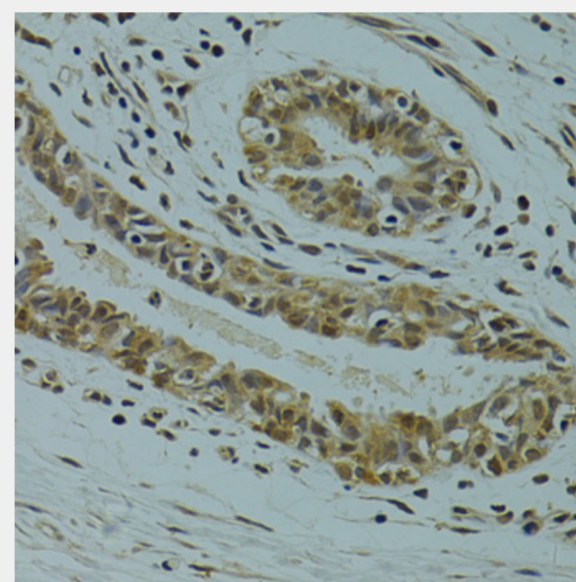
Immunohistochemistry of paraffin-embedded rat testis using RSRC1 antibody at dilution of 1:100 (40x lens).



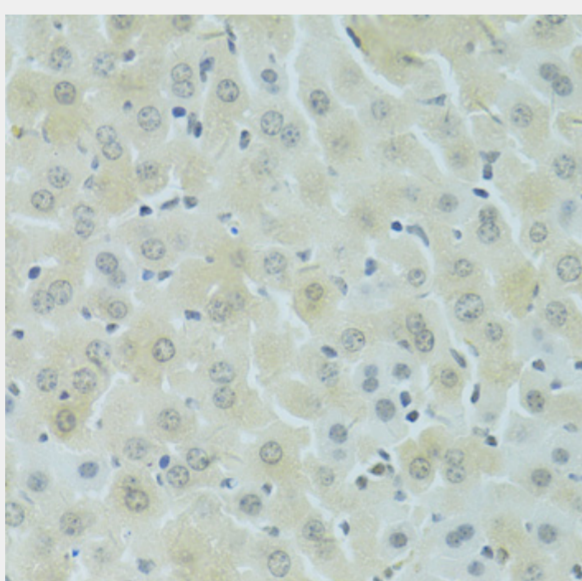
Immunohistochemistry of paraffin-embedded rat brain using RSRC1 antibody at dilution of 1:100 (40x lens).



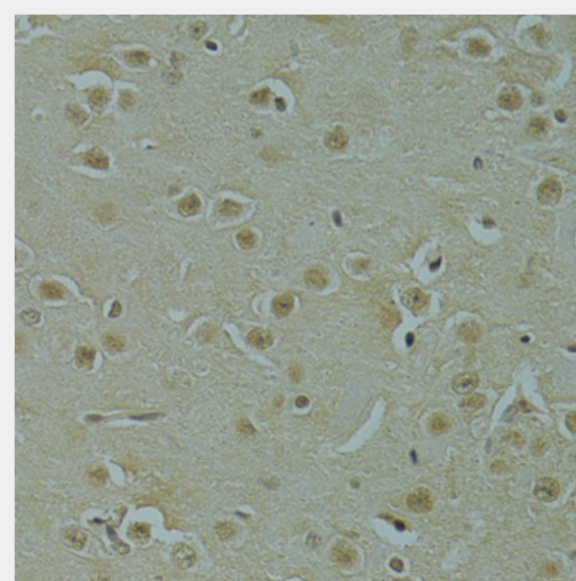
Immunohistochemistry of paraffin-embedded human colon carcinoma using RSRC1 antibody at dilution of 1:100 (40x lens).



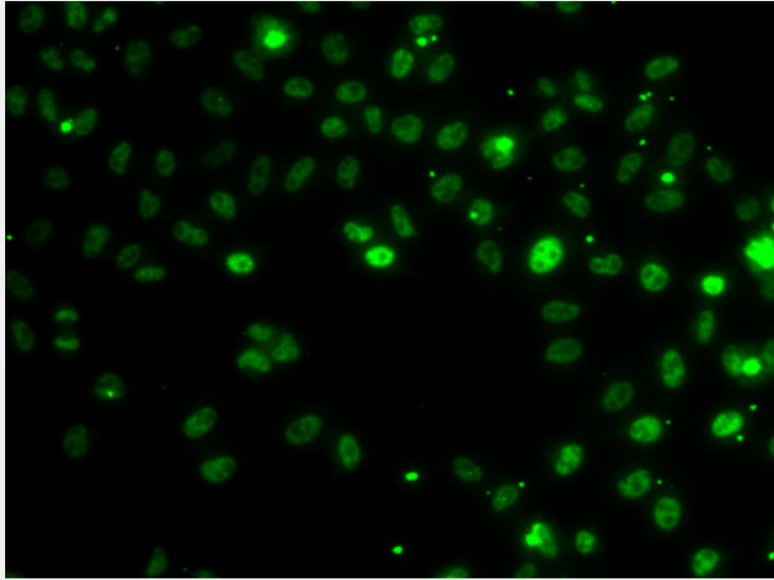
Immunohistochemistry of paraffin-embedded human breast cancer using RSRC1 antibody at dilution of 1:100 (40x lens).



Immunohistochemistry of paraffin-embedded mouse liver using RSRC1 antibody at dilution of 1:100 (40x lens).



Immunohistochemistry of paraffin-embedded mouse brain using RSRC1 antibody at dilution of 1:100 (40x lens).



Immunofluorescence analysis of MCF-7 cells using RSRC1 antibody.

All products are for RESEARCH USE ONLY. Not for diagnostic & therapeutic purposes!