

MAP1LC3B Polyclonal Antibody

Catalog No: tcba10885



Available Sizes

Size: 50ul

Size: 100ul

Size: 200ul



Specifications

Application:

WB,IHC,IF

Research Area:

Cancer,Autophagy pathway,Neuroscience,Cardiovascular,Metabolism,

Species Reactivity:

Human,Mouse,Rat,Pig

Host Species:

Rabbit

Isotype:

IgG

Form:

Liquid

Storage Buffer:

Buffer: PBS with 0.02% sodium azide, 50% glycerol, pH7.3.

Recommended Dilution:

WB 1:500 - 1:2000

IHC 1:50 - 1:200

IF 1:50 - 1:200

Storage Instruction:

Store at -20°C. Avoid freeze / thaw cycles.

Alternative Names:

ATG8F;LC3B;MAP1A/1BLC3;MAP1LC3B-a

SwissProt:

Q9GZQ8

Gene ID:

81631 (human);

Calculated Molecular Weight:

14kDa

Purification:

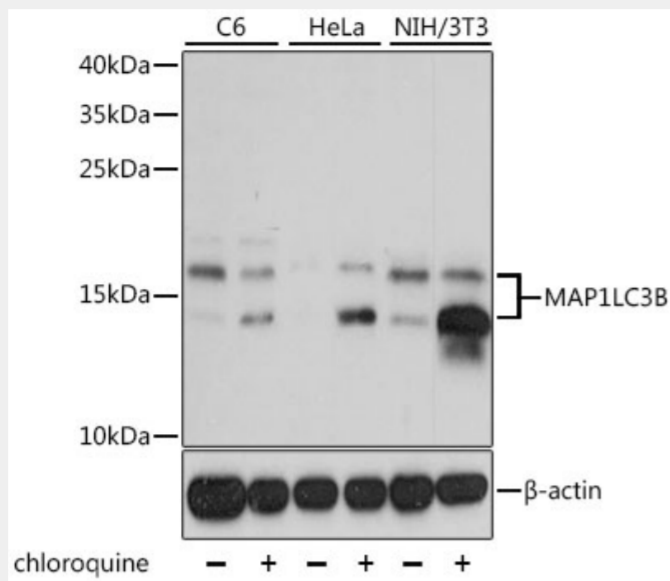
Affinity purification

Cellular Location:

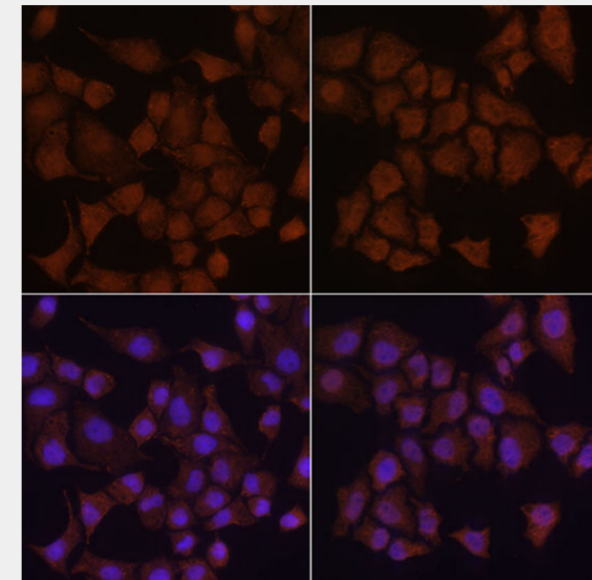
Cytoplasm,Cytoplasmic vesicle,Endomembrane system,Lipid-anchor,autophagosome,autophagosome membrane,cytoskeleton,

Product Description

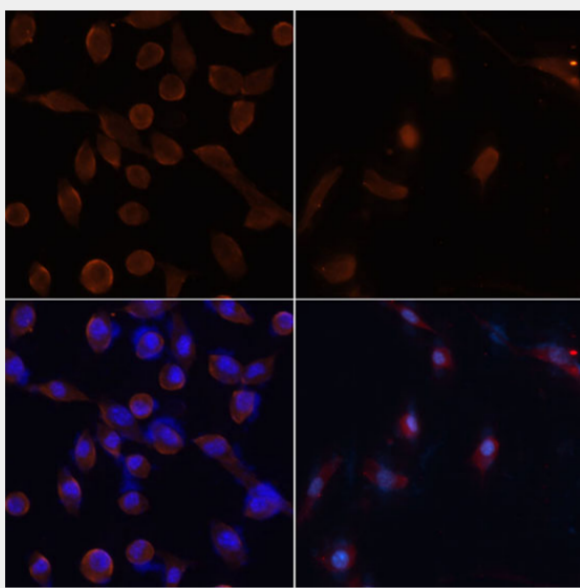
The product of this gene is a subunit of neuronal microtubule-associated MAP1A and MAP1B proteins, which are involved in microtubule assembly and important for neurogenesis. Studies on the rat homolog implicate a role for this gene in autophagy, a process that involves the bulk degradation of cytoplasmic component.



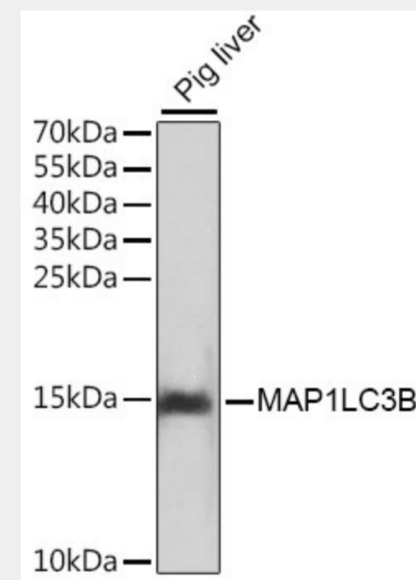
Western blot analysis of extracts of various cell lines, using MAP1LC3B antibody at 1:1000 dilution. C6 cells were treated by Chloroquine (50 μM) for 20 hours. HeLa cells were treated by Chloroquine (50 μM) for 20 hours. NIH/3T3 cells were treated by Chloroquine (50 μM) for 20 hours.
Secondary antibody: HRP Goat Anti-Rabbit IgG (H+L) at 1:10000 dilution.
Lysates/proteins: 25ug per lane.
Blocking buffer: 3% nonfat dry milk in TBST.
Detection: ECL Basic Kit.
Exposure time: 10s.



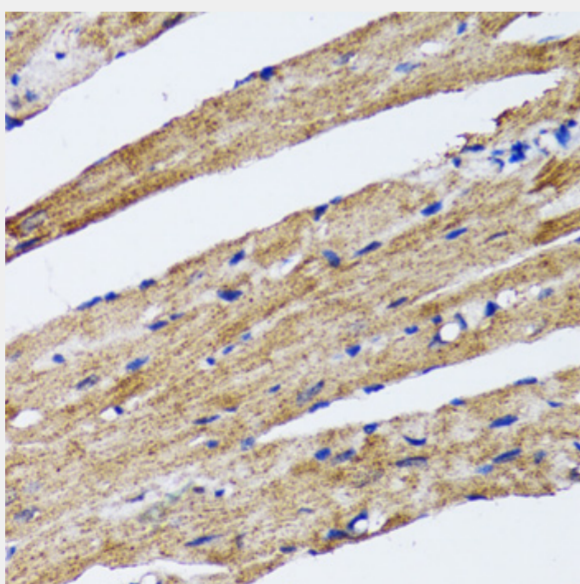
Immunofluorescence analysis of HeLa cells using MAP1LC3B antibody at dilution of 1:100. HeLa cells were treated by Chloroquine (50 μM) for 20 hours(left). Blue: DAPI for nuclear staining.



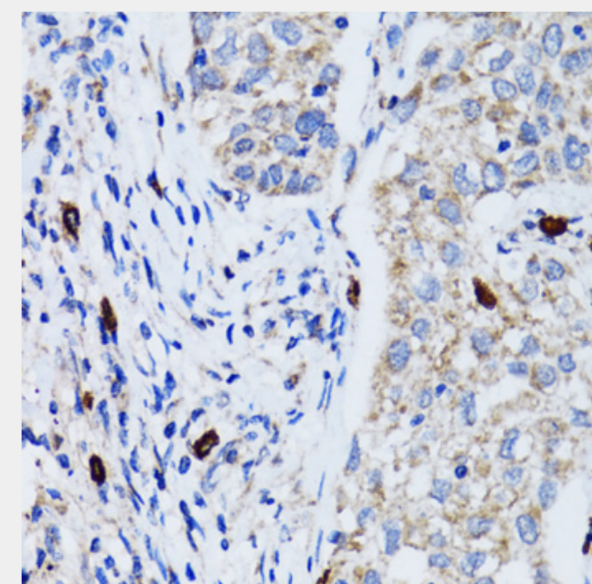
Immunofluorescence analysis of NIH/3T3 cells using MAP1LC3B antibody at dilution of 1:100. NIH/3T3 cells were treated by Chloroquine (50 μM) for 20 hours(left). Blue: DAPI for nuclear staining.



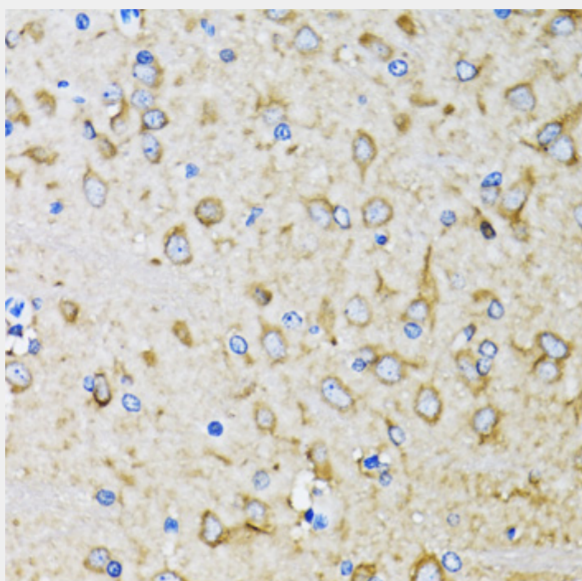
Western blot analysis of extracts of pig liver, using MAP1LC3B antibody. Secondary antibody: HRP Goat Anti-Rabbit IgG (H+L) at 1:10000 dilution. Lysates/proteins: 25ug per lane. Blocking buffer: 3% nonfat dry milk in TBST.



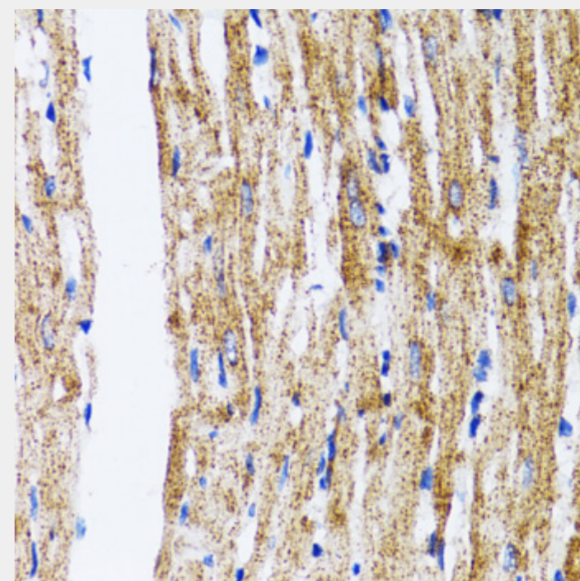
Immunohistochemistry of paraffin-embedded rat heart using MAP1LC3B antibody at dilution of 1:100 (40x lens).



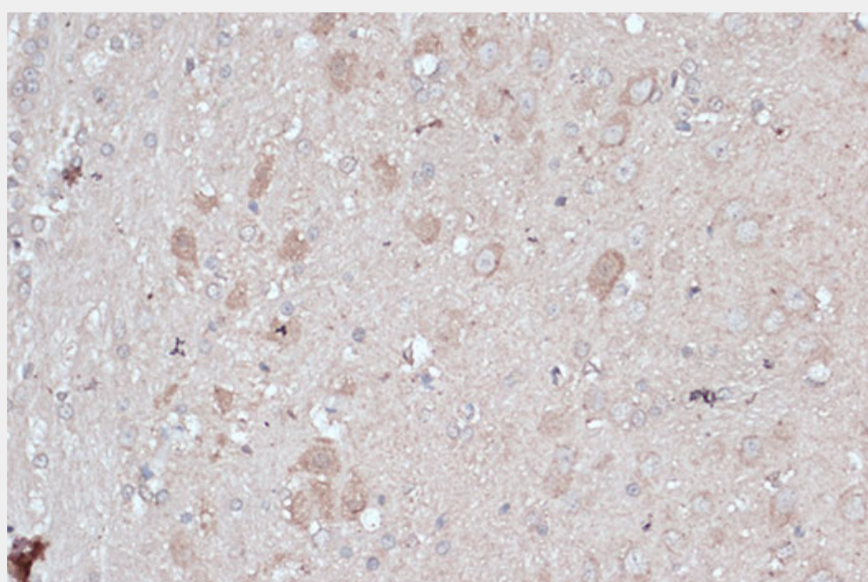
Immunohistochemistry of paraffin-embedded human lung cancer using MAP1LC3B antibody at dilution of 1:100 (40x lens).



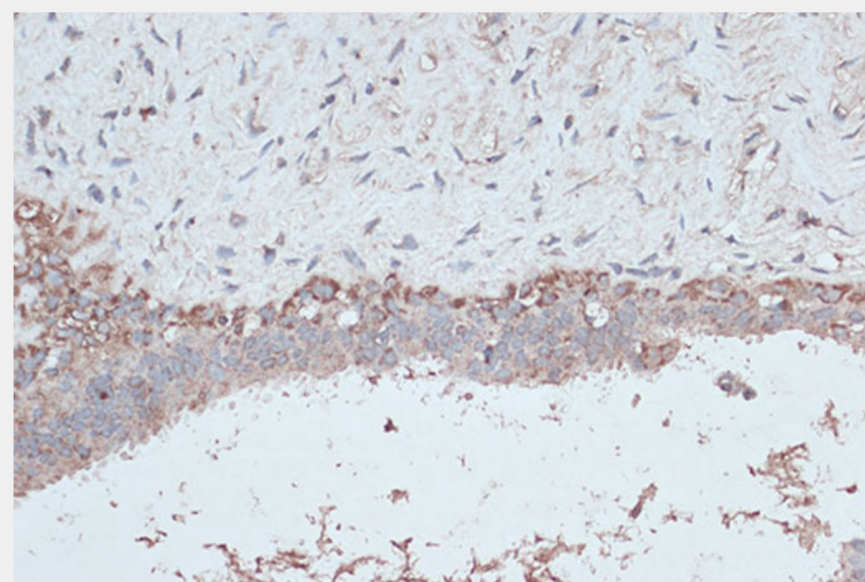
Immunohistochemistry of paraffin-embedded mouse brain using MAP1LC3B antibody at dilution of 1:100 (40x lens).



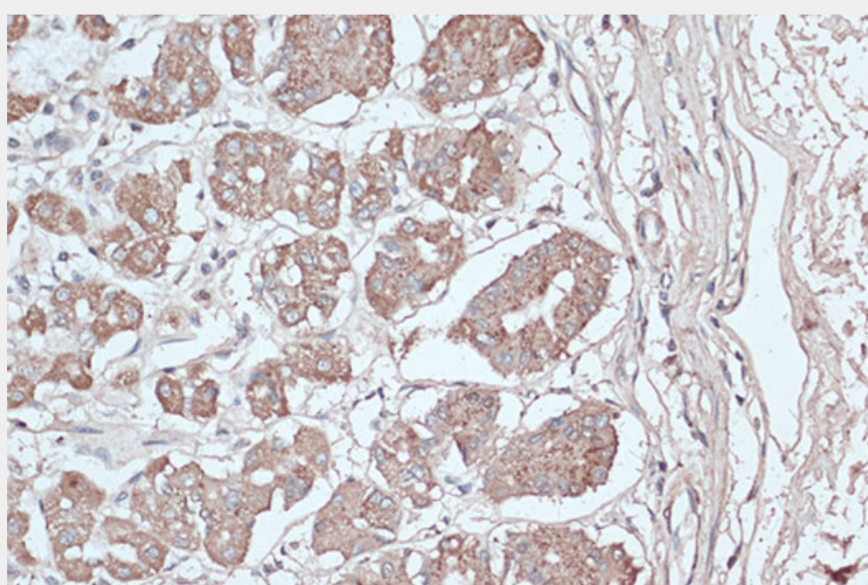
Immunohistochemistry of paraffin-embedded mouse heart using MAP1LC3B antibody at dilution of 1:100 (40x lens).



Immunohistochemistry of paraffin-embedded rat brain using MAP1LC3B antibody at dilution of 1:100 (40x lens).



Immunohistochemistry of paraffin-embedded human breast cancer using MAP1LC3B antibody at dilution of 1:100 (40x lens).



Immunohistochemistry of paraffin-embedded human stomach using MAP1LC3B antibody at dilution of 1:100 (40x lens).

All products are for RESEARCH USE ONLY. Not for diagnostic & therapeutic purposes!