

CCAR2 Polyclonal Antibody

Catalog No: tcba10818



Available Sizes

Size: 50ul

Size: 100ul

Size: 200ul



Specifications

Application:

WB,IHC,IF

Research Area:

Cancer,Apoptosis,p53 pathway,RNA Binding Protein(RBP),

Species Reactivity:

Human,Mouse,Rat

Host Species:

Rabbit

Isotype:

IgG

Form:

Liquid

Storage Buffer:

Buffer: PBS with 0.02% sodium azide, 50% glycerol, pH7.3.

Recommended Dilution:

WB 1:500 - 1:2000

IHC 1:50 - 1:200

IF 1:50 - 1:200

Storage Instruction:

Store at -20°C. Avoid freeze / thaw cycles.

Alternative Names:

DBC-1;DBC1;KIAA1967;NET35;p30DBC;p30DBC

SwissProt:

Q8N163

Gene ID:

57805 (human);

Calculated Molecular Weight:

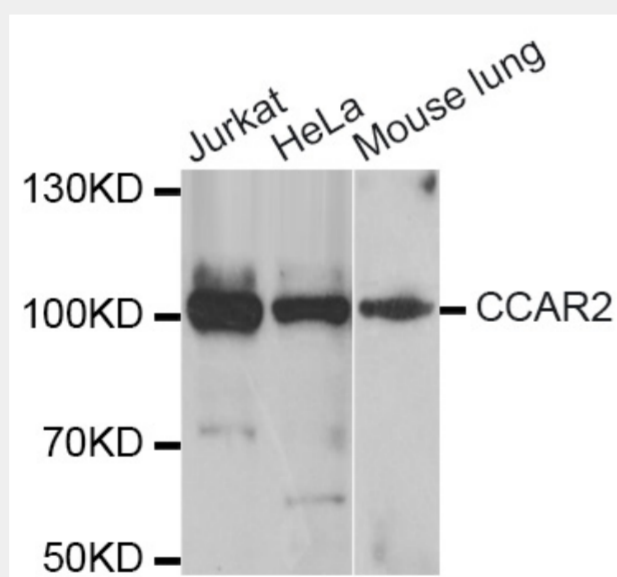
102kDa/103kDa

Purification:

Affinity purification

Cellular Location:

Cytoplasm,Nucleus,



Western blot analysis of extracts of various cell lines, using CCAR2 antibody at 1:1000 dilution.

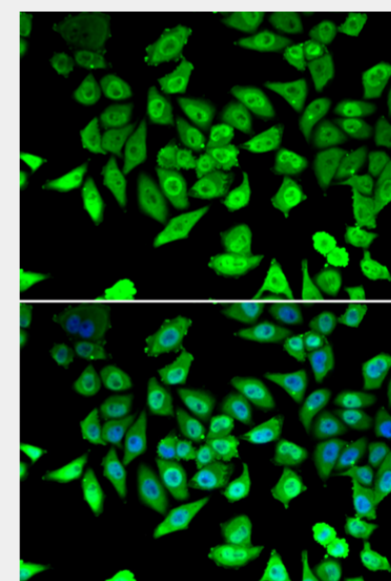
Secondary antibody: HRP Goat Anti-Rabbit IgG (H+L) at 1:10000 dilution.

Lysates/proteins: 25ug per lane.

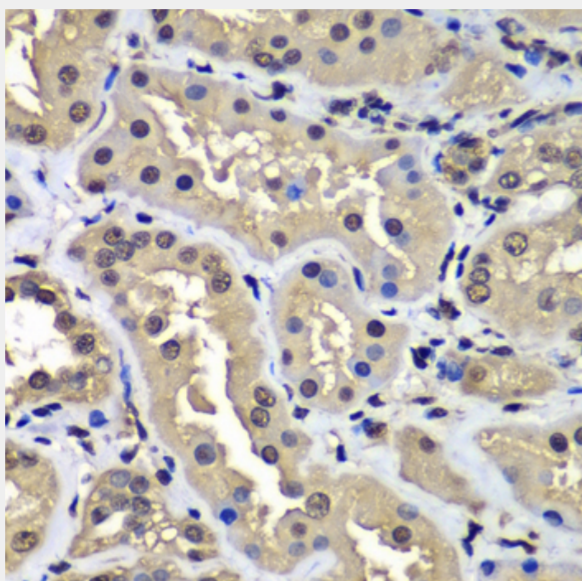
Blocking buffer: 3% nonfat dry milk in TBST.

Detection: ECL Basic Kit.

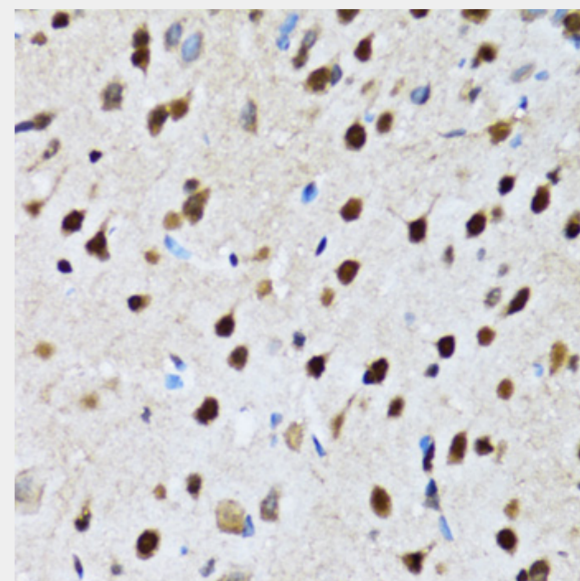
Exposure time: 30s.



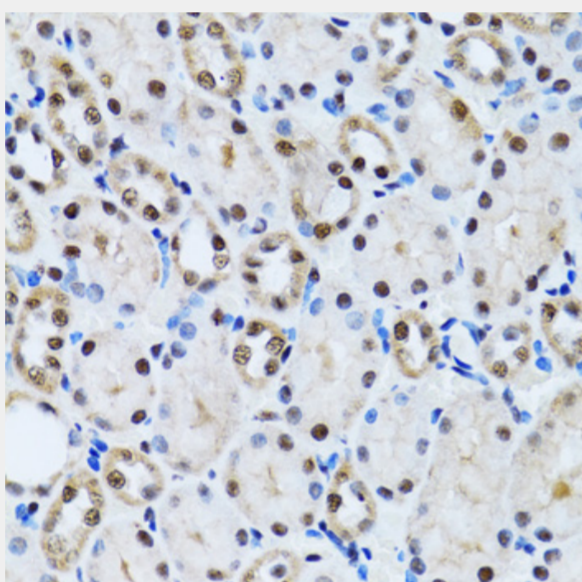
Immunofluorescence analysis of U2OS cells using CCAR2 antibody. Blue: DAPI for nuclear staining.



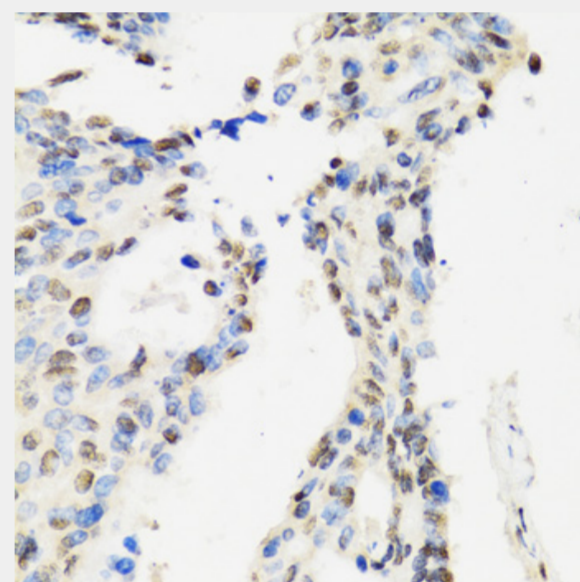
Immunohistochemistry of paraffin-embedded human kidney using CCAR2 antibody at dilution of 1:100 (40x lens).



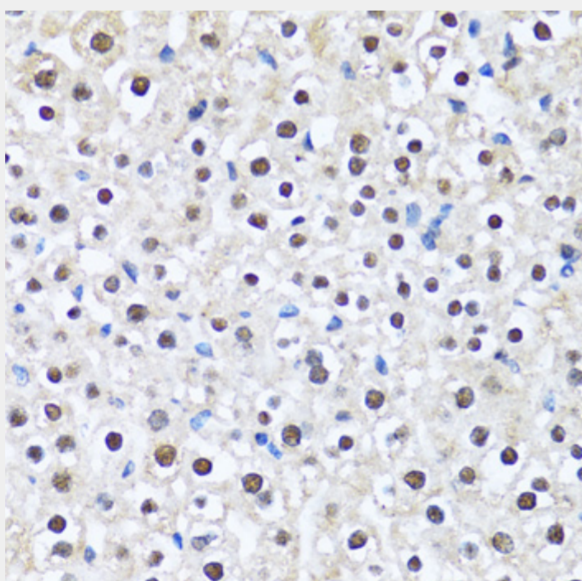
Immunohistochemistry of paraffin-embedded rat brain using CCAR2 antibody at dilution of 1:100 (40x lens).



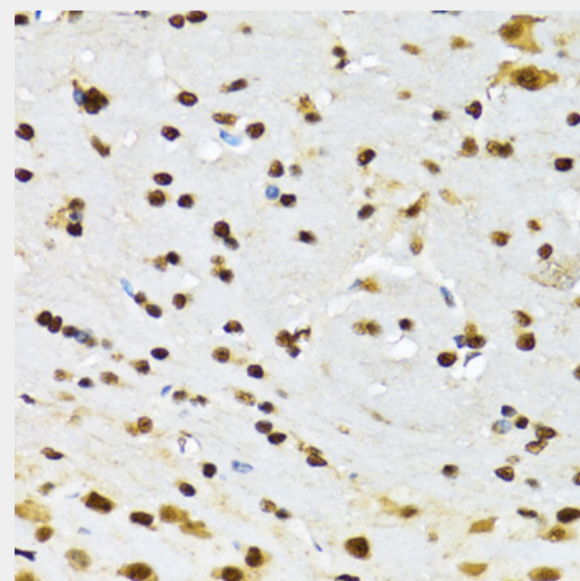
Immunohistochemistry of paraffin-embedded rat kidney using CCAR2 antibody at dilution of 1:100 (40x lens).



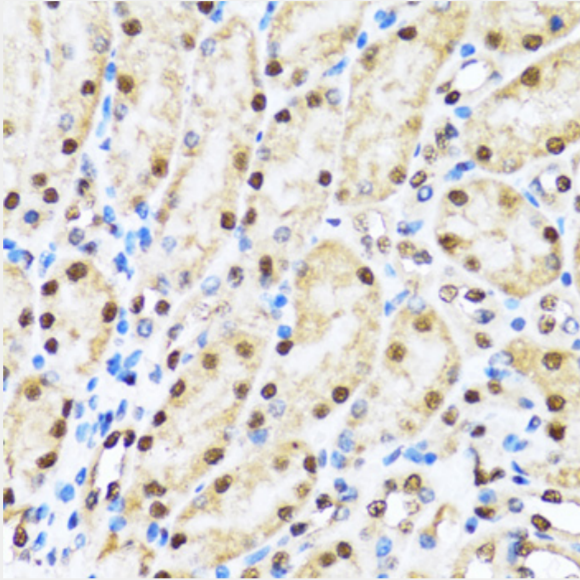
Immunohistochemistry of paraffin-embedded human rectal cancer using CCAR2 antibody at dilution of 1:100 (40x lens).



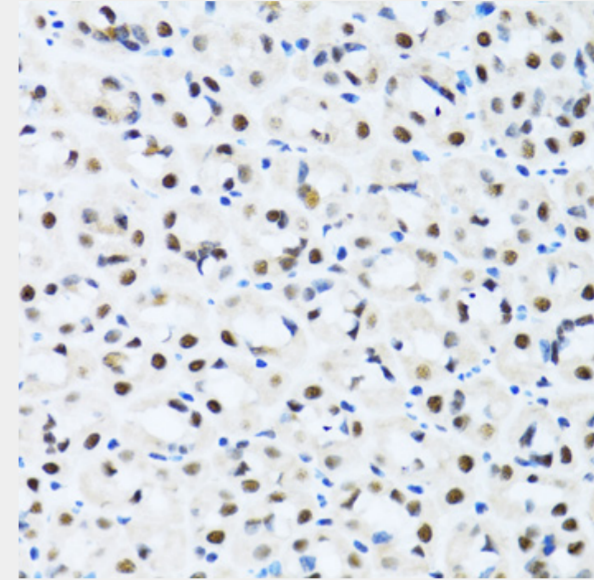
Immunohistochemistry of paraffin-embedded mouse liver using CCAR2 antibody at dilution of 1:100 (40x lens).



Immunohistochemistry of paraffin-embedded mouse brain using CCAR2 antibody at dilution of 1:100 (40x lens).



Immunohistochemistry of paraffin-embedded mouse kidney using CCAR2 antibody at dilution of 1:100 (40x lens).



Immunohistochemistry of paraffin-embedded mouse stomach using CCAR2 antibody at dilution of 1:100 (40x lens).

All products are for RESEARCH USE ONLY. Not for diagnostic & therapeutic purposes!