

# HIRIP3 Polyclonal Antibody

Catalog No: tcba10707



## Available Sizes

**Size:** 50ul

**Size:** 100ul

**Size:** 200ul



## Specifications

**Application:**

WB,IHC,IF

**Research Area:**

Stem cells,

**Species Reactivity:**

Human,Mouse,Rat

**Host Species:**

Rabbit

**Isotype:**

IgG

**Form:**

Liquid

**Storage Buffer:**

Buffer: PBS with 0.02% sodium azide, 50% glycerol, pH7.3.

**Recommended Dilution:**

WB 1:500 - 1:2000

IHC 1:50 - 1:200

IF 1:50 - 1:100

#### Storage Instruction:

Store at -20°C. Avoid freeze / thaw cycles.

#### SwissProt:

Q9BW71

#### Gene ID:

8479 (human);

#### Calculated Molecular Weight:

19kDa/27kDa/61kDa

#### Purification:

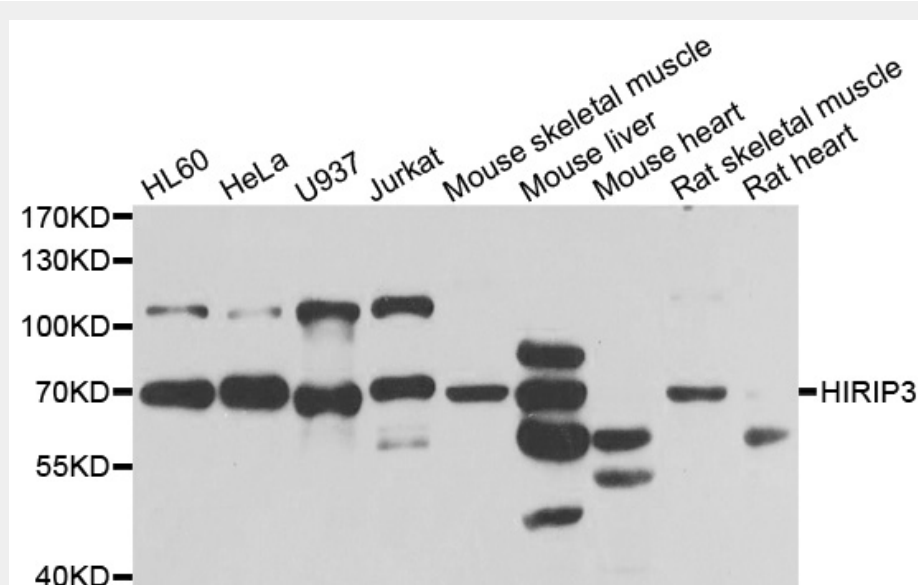
Affinity purification

#### Cellular Location:

Nucleus,

### Product Description

The HIRA protein shares sequence similarity with Hir1p and Hir2p, the two corepressors of histone gene transcription characterized in the yeast, *Saccharomyces cerevisiae*. The structural features of the HIRA protein suggest that it may function as part of a multiprotein complex. Several cDNAs encoding HIRA-interacting proteins, or HIRIPs, have been identified. In vitro, the protein encoded by this gene binds HIRA, as well as H2B and H3 core histones, indicating that a complex containing HIRA-HIRIP3 could function in some aspects of chromatin and histone metabolism. Alternatively spliced transcript variants encoding distinct isoforms have been found for this gene.



Western blot analysis of extracts of various cell lines, using HIRIP3 antibody at 1:1000 dilution.

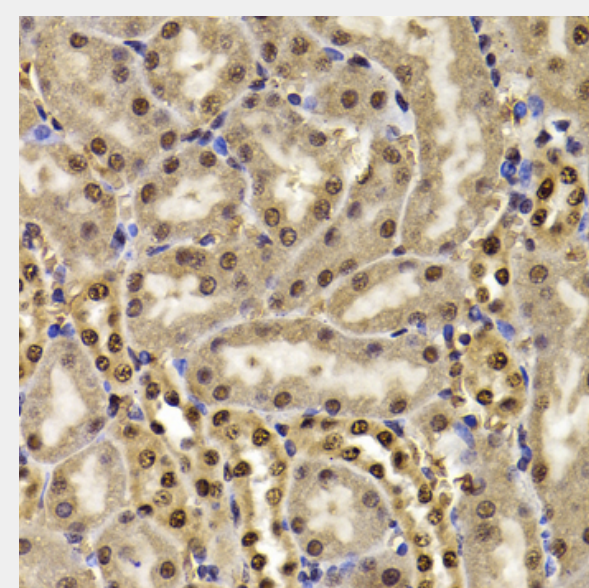
Secondary antibody: HRP Goat Anti-Rabbit IgG (H+L) at 1:10000 dilution.

Lysates/proteins: 25ug per lane.

Blocking buffer: 3% nonfat dry milk in TBST.

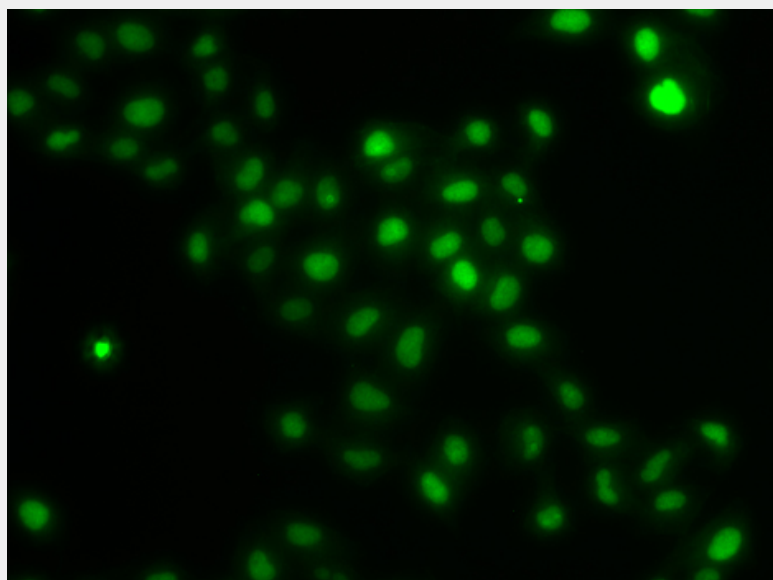
Detection: ECL Basic Kit.

Exposure time: 90s.

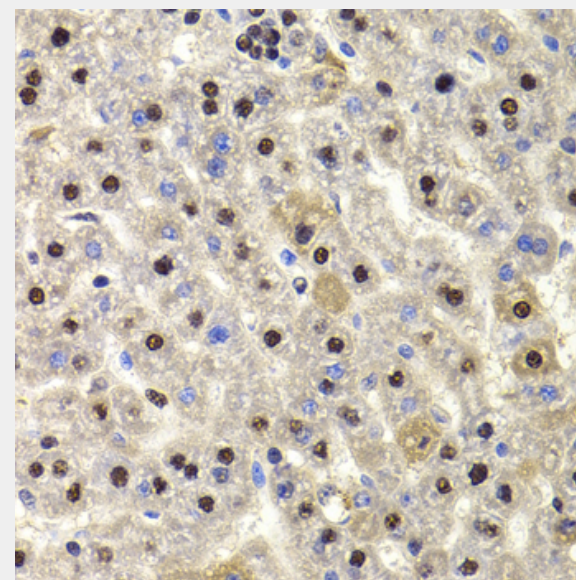


Immunohistochemistry of paraffin-embedded mouse kidney using HIRIP3 antibody at dilution of 1:100 (40x lens).

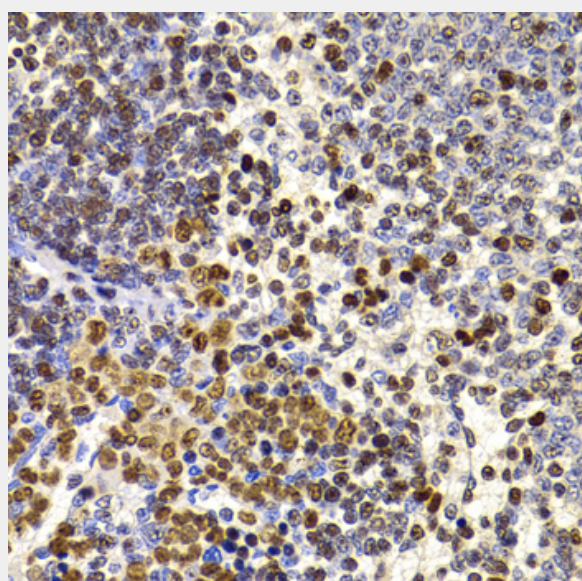




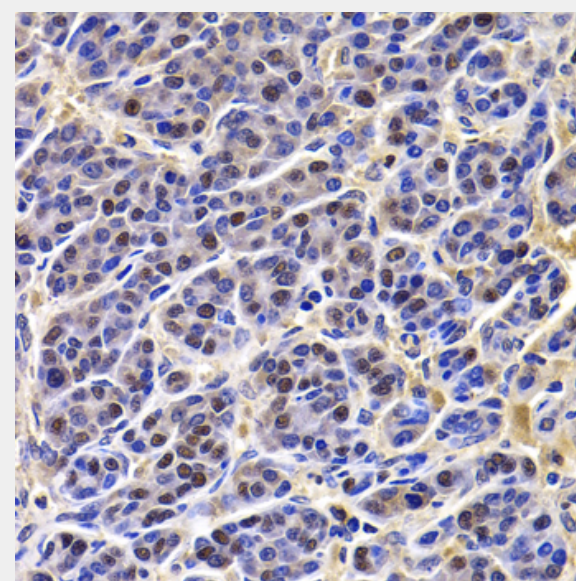
Immunofluorescence analysis of U2OS cells using HIRIP3 antibody.



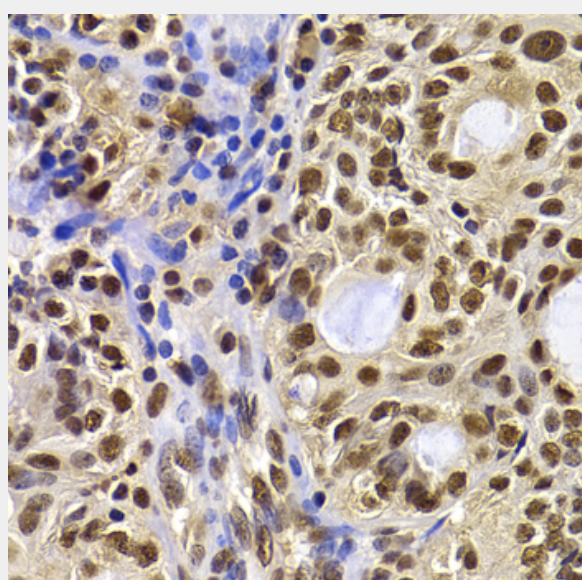
Immunohistochemistry of paraffin-embedded rat liver using HIRIP3 antibody at dilution of 1:100 (40x lens).



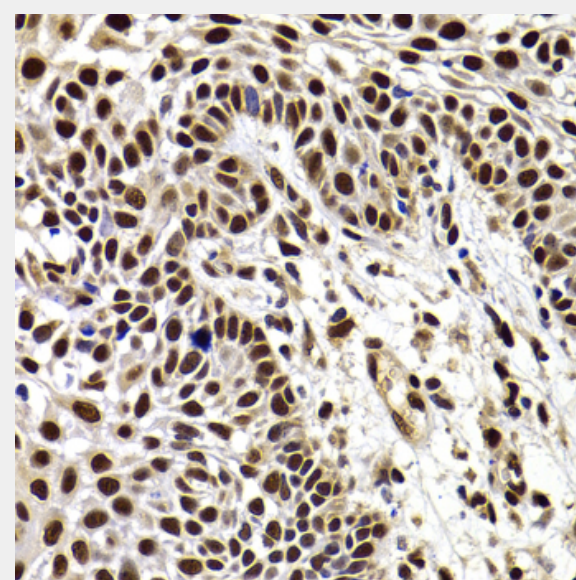
Immunohistochemistry of paraffin-embedded rat spleen using HIRIP3 antibody at dilution of 1:100 (40x lens).



Immunohistochemistry of paraffin-embedded human liver cancer using HIRIP3 antibody at dilution of 1:100 (40x lens).

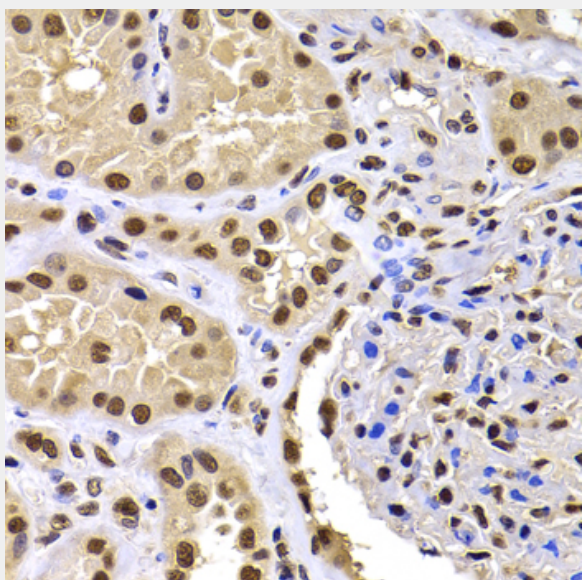


Immunohistochemistry of paraffin-embedded human oophoroma using HIRIP3 antibody at dilution of 1:100 (40x lens).

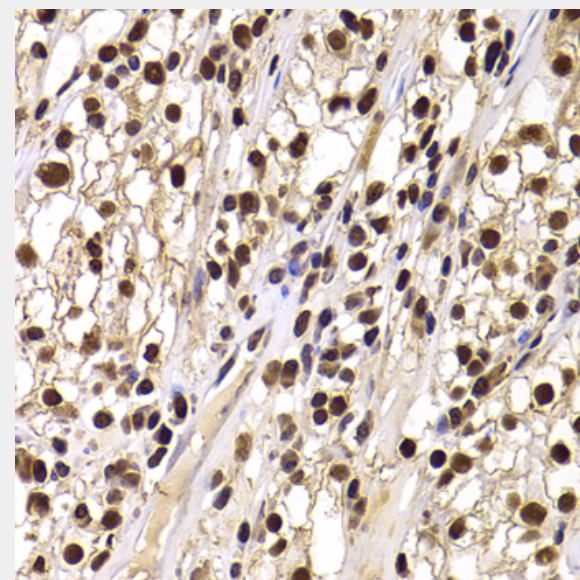


Immunohistochemistry of paraffin-embedded human well-differentiated squamous skin carcinoma using HIRIP3 antibody at dilution of 1:100 (40x lens).

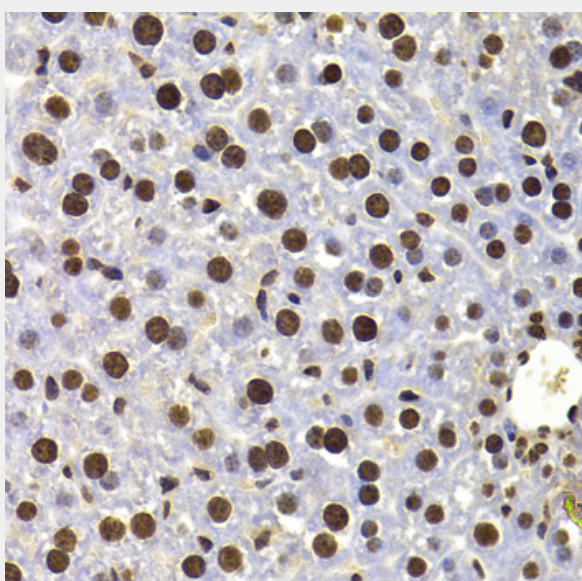




Immunohistochemistry of paraffin-embedded human kidney using HIRIP3 antibody at dilution of 1:100 (40x lens).



Immunohistochemistry of paraffin-embedded human kidney cancer using HIRIP3 antibody at dilution of 1:100 (40x lens).



Immunohistochemistry of paraffin-embedded mouse liver using HIRIP3 antibody at dilution of 1:100 (40x lens).

All products are for RESEARCH USE ONLY. Not for diagnostic & therapeutic purposes!