

STAT4 Polyclonal Antibody

Catalog No: tcba10684



Available Sizes

Size: 50ul

Size: 100ul

Size: 200ul



Specifications

Application:

WB,IHC,IF

Research Area:

,Epigenetics,

Species Reactivity:

Human,Mouse,Rat

Host Species:

Rabbit

Isotype:

IgG

Form:

Liquid

Storage Buffer:

Buffer: PBS with 0.02% sodium azide, 50% glycerol, pH7.3.

Recommended Dilution:

WB 1:500 - 1:2000

IHC 1:50 - 1:200

IF 1:50 - 1:100

Storage Instruction:

Store at -20°C. Avoid freeze / thaw cycles.

Alternative Names:

SLEB11

SwissProt:

Q14765

Gene ID:

6775 (human);

Calculated Molecular Weight:

85kDa

Purification:

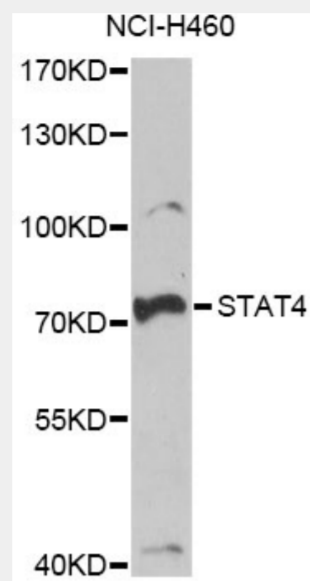
Affinity purification

Cellular Location:

Cytoplasm,Nucleus,

Product Description

The protein encoded by this gene is a member of the STAT family of transcription factors. In response to cytokines and growth factors, STAT family members are phosphorylated by the receptor associated kinases, and then form homo- or heterodimers that translocate to the cell nucleus where they act as transcription activators. This protein is essential for mediating responses to IL12 in lymphocytes, and regulating the differentiation of T helper cells. Mutations in this gene may be associated with systemic lupus erythematosus and rheumatoid arthritis. Alternate splicing results in multiple transcript variants that encode the same protein.



Western blot analysis of extracts of NCI-H460 cells, using STAT4 antibody at 1:1000 dilution.

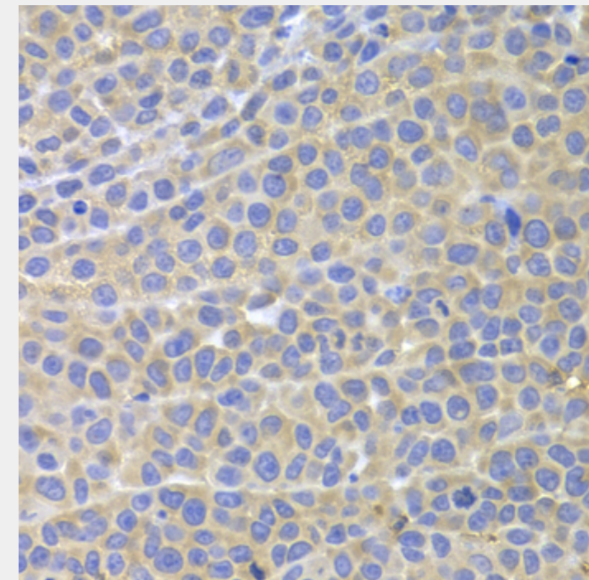
Secondary antibody: HRP Goat Anti-Rabbit IgG (H+L) at 1:10000 dilution.

Lysates/proteins: 25ug per lane.

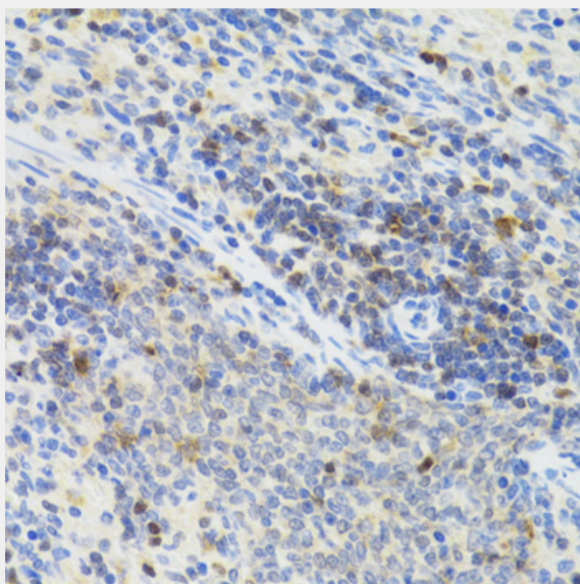
Blocking buffer: 3% nonfat dry milk in TBST.

Detection: ECL Basic Kit.

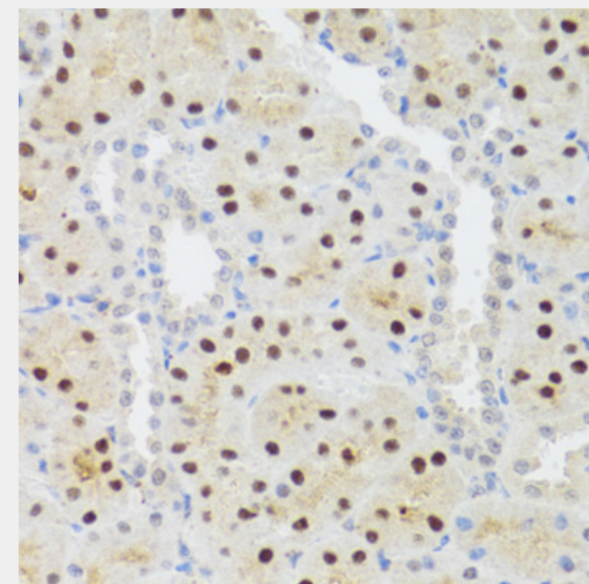
Exposure time: 90s.



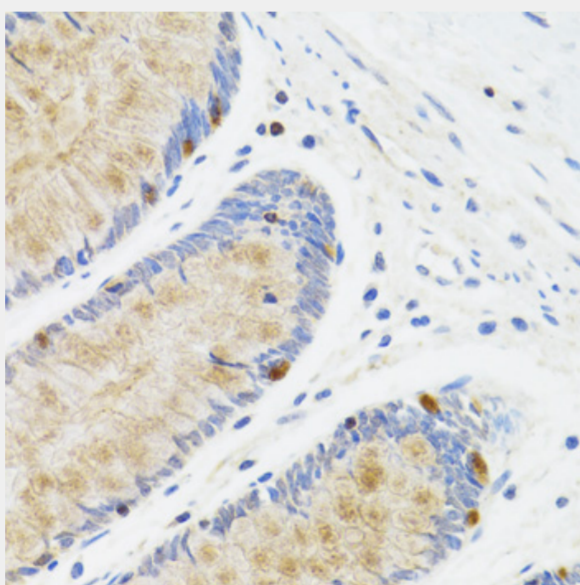
Immunohistochemistry of paraffin-embedded mouse cancer using STAT4 antibody at dilution of 1:100 (40x lens).



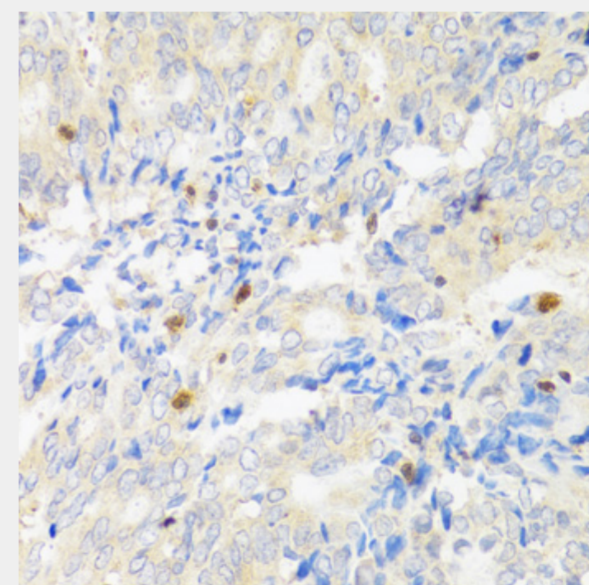
Immunohistochemistry of paraffin-embedded rat spleen using STAT4 antibody at dilution of 1:100 (40x lens).



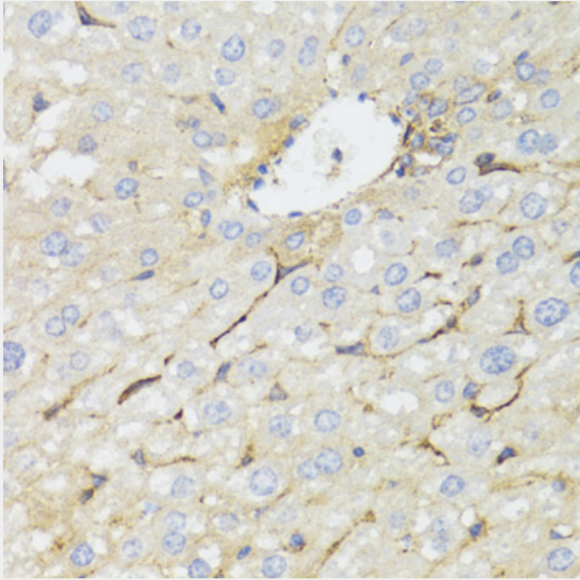
Immunohistochemistry of paraffin-embedded rat kidney using STAT4 antibody at dilution of 1:100 (40x lens).



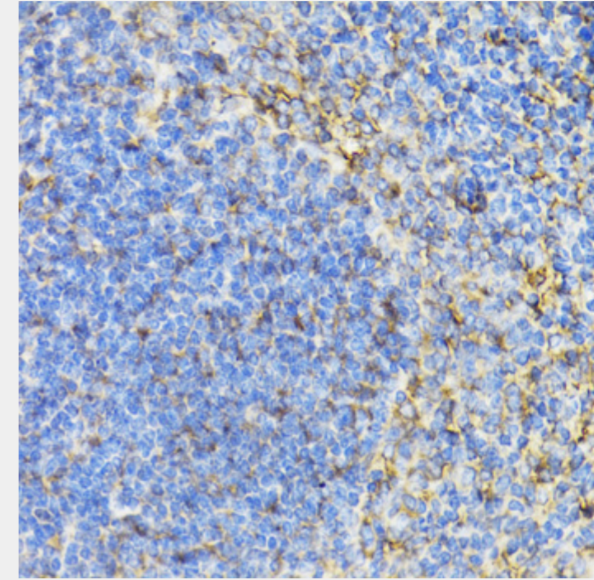
Immunohistochemistry of paraffin-embedded human rectum using STAT4 antibody at dilution of 1:100 (40x lens).



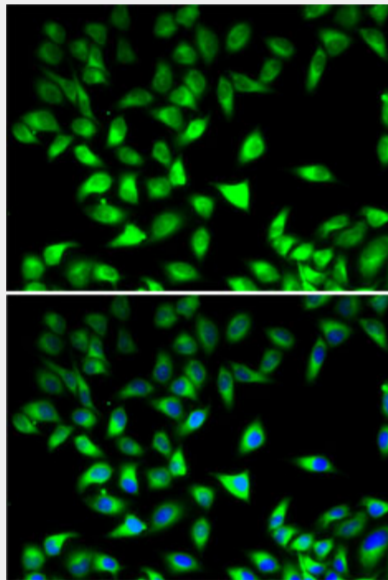
Immunohistochemistry of paraffin-embedded human rectal cancer using STAT4 antibody at dilution of 1:100 (40x lens).



Immunohistochemistry of paraffin-embedded mouse liver using STAT4 antibody at dilution of 1:100 (40x lens).



Immunohistochemistry of paraffin-embedded mouse spleen using STAT4 antibody at dilution of 1:100 (40x lens).



Immunofluorescence analysis of MCF7 cells using STAT4 antibody. Blue: DAPI for nuclear staining.

All products are for RESEARCH USE ONLY. Not for diagnostic & therapeutic purposes!