

TOMM20 Polyclonal Antibody

Catalog No: tcba10494



Available Sizes

Size: 50ul

Size: 100ul

Size: 200ul



Specifications

Application:

WB,IHC,IF

Research Area:

Cancer, Metabolism,

Species Reactivity:

Human, Mouse, Rat

Host Species:

Rabbit

Isotype:

IgG

Form:

Liquid

Storage Buffer:

Buffer: PBS with 0.02% sodium azide, 50% glycerol, pH7.3.

Recommended Dilution:

WB 1:500 - 1:2000

IHC 1:50 - 1:200

IF 1:20 - 1:50

Storage Instruction:

Store at -20°C. Avoid freeze / thaw cycles.

Alternative Names:

MAS20;MOM19;TOM20

SwissProt:

Q15388

Gene ID:

9804 (human);

Calculated Molecular Weight:

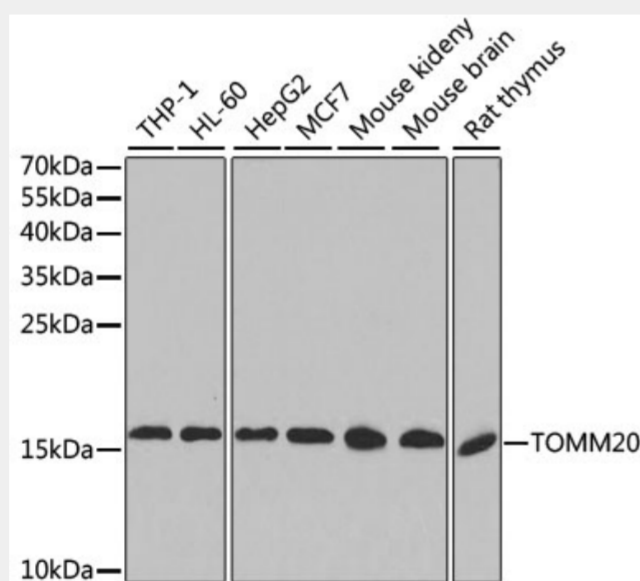
16kDa

Purification:

Affinity purification

Cellular Location:

Mitochondrion outer membrane,Single-pass membrane protein,



Western blot analysis of extracts of various cell lines, using TOMM20 antibody at 1:1000 dilution.

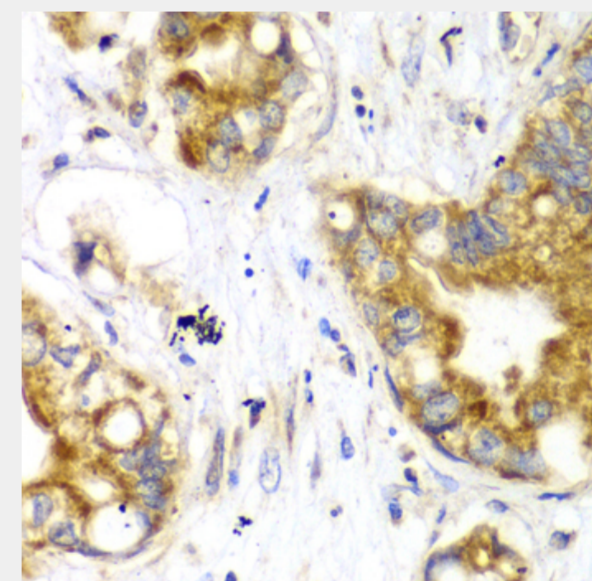
Secondary antibody: HRP Goat Anti-Rabbit IgG (H+L) at 1:10000 dilution.

Lysates/proteins: 25ug per lane.

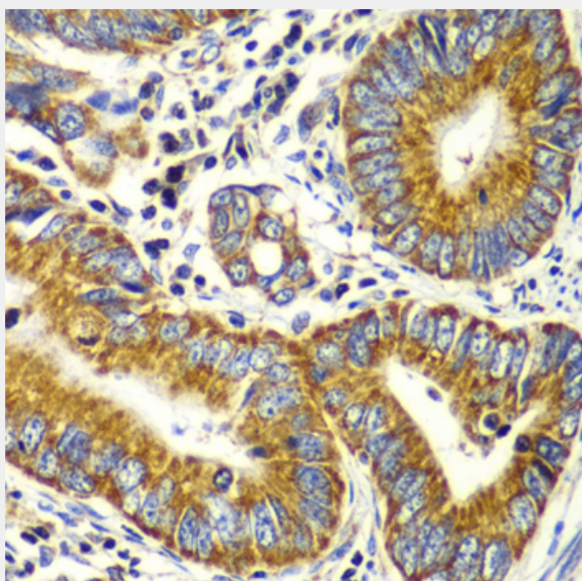
Blocking buffer: 3% nonfat dry milk in TBST.

Detection: ECL Basic Kit.

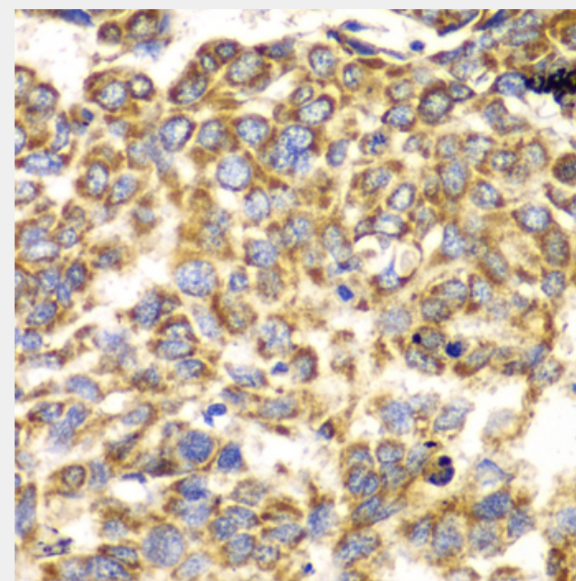
Exposure time: 60s.



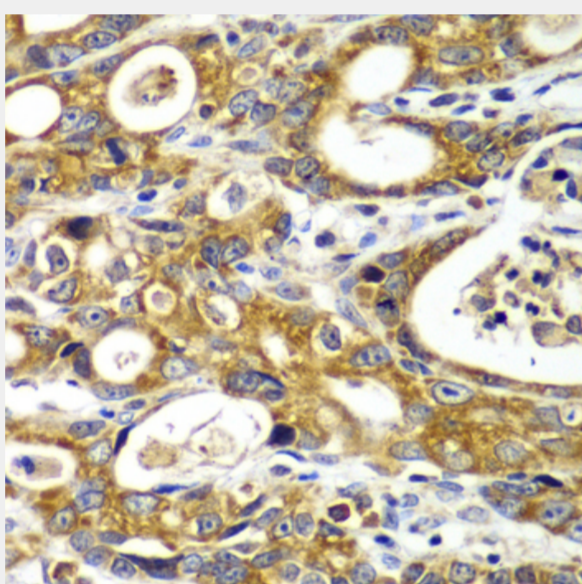
Immunohistochemistry of paraffin-embedded human liver cancer using TOMM20 antibody at dilution of 1:100 (40x lens).



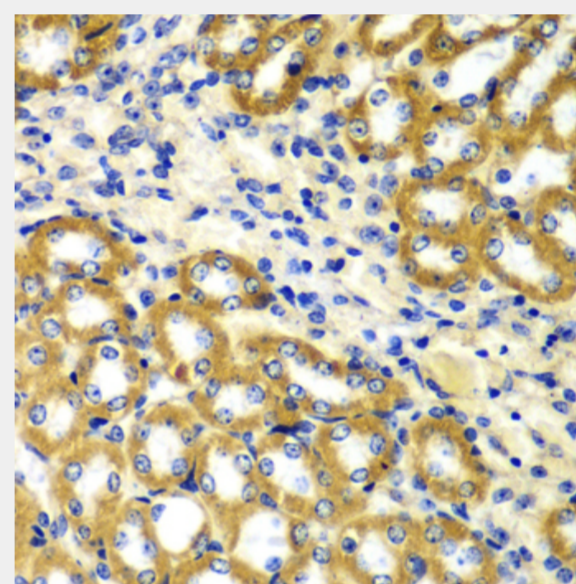
Immunohistochemistry of paraffin-embedded human colon carcinoma using TOMM20 antibody at dilution of 1:100 (40x lens).



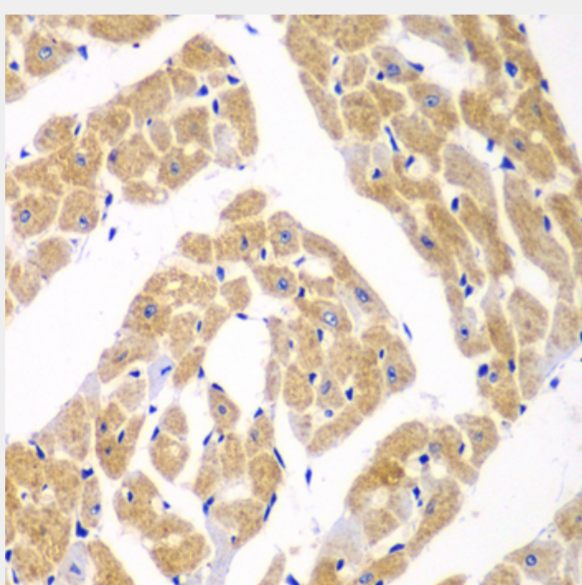
Immunohistochemistry of paraffin-embedded human esophageal cancer using TOMM20 antibody at dilution of 1:100 (40x lens).



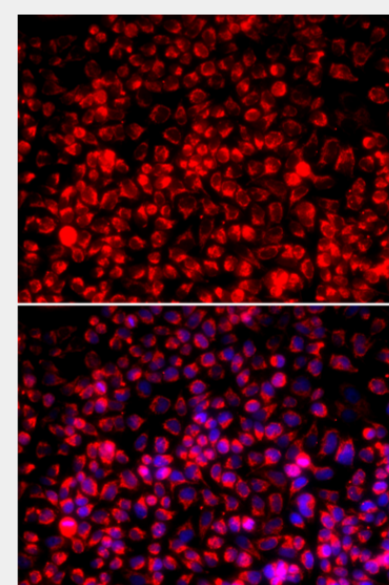
Immunohistochemistry of paraffin-embedded human gastric cancer using TOMM20 antibody at dilution of 1:100 (40x lens).



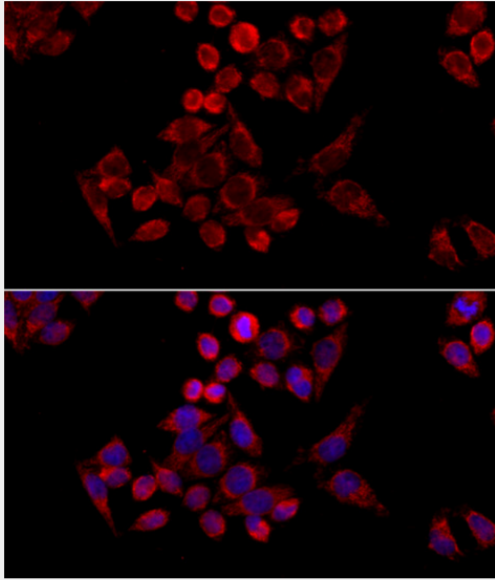
Immunohistochemistry of paraffin-embedded mouse kidney using TOMM20 antibody at dilution of 1:100 (40x lens).



Immunohistochemistry of paraffin-embedded mouse heart using TOMM20 antibody at dilution of 1:100 (40x lens).



Immunofluorescence analysis of A549 cells using TOMM20 antibody. Blue: DAPI for nuclear staining.



Immunofluorescence analysis of HeLa cells using TOMM20 antibody at dilution of 1:100 (40x lens). Blue: DAPI for nuclear staining.

All products are for RESEARCH USE ONLY. Not for diagnostic & therapeutic purposes!