

PPP1R8 Polyclonal Antibody

Catalog No: tcba10422



Available Sizes

Size: 50ul

Size: 100ul

Size: 200ul



Specifications

Application:

WB,IHC,IF

Research Area:

Cancer,Cell cycle,Cell Biology,

Species Reactivity:

Human,Mouse,Rat

Host Species:

Rabbit

Isotype:

IgG

Form:

Liquid

Storage Buffer:

Buffer: PBS with 0.02% sodium azide, 50% glycerol, pH7.3.

Recommended Dilution:

WB 1:500 - 1:2000

IHC 1:50 - 1:200

IF 1:50 - 1:100

Storage Instruction:

Store at -20°C. Avoid freeze / thaw cycles.

Alternative Names:

ARD-1;ARD1;NIPP-1;NIPP1;PRO2047

SwissProt:

Q12972

Gene ID:

5511 (human);

Calculated Molecular Weight:

13kDa/22kDa/38kDa

Purification:

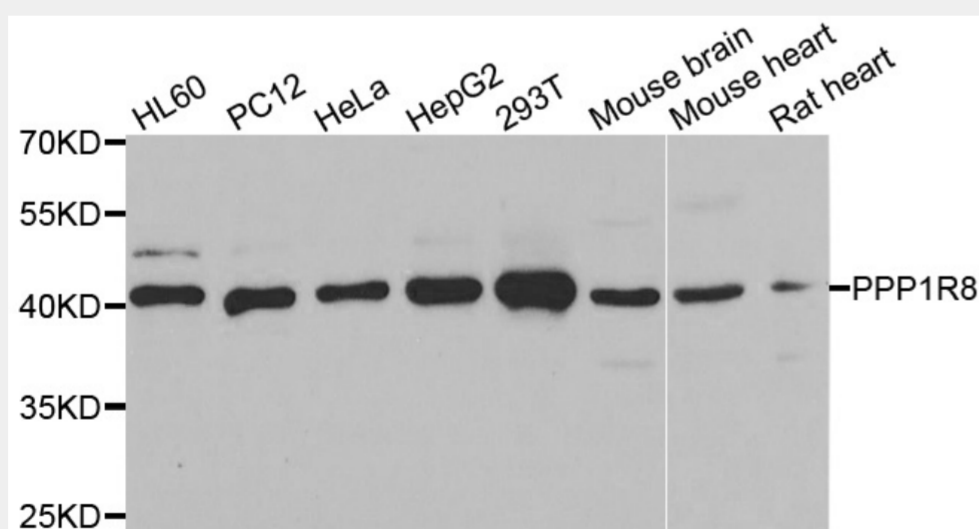
Affinity purification

Cellular Location:

Cytoplasm,Nucleus,Nucleus speckle,

Product Description

This gene, through alternative splicing, encodes three different isoforms. Two of the protein isoforms encoded by this gene are specific inhibitors of type 1 serine/threonine protein phosphatases and can bind but not cleave RNA. The third protein isoform lacks the phosphatase inhibitory function but is a single-strand endoribonuclease comparable to RNase E of E. coli. This isoform requires magnesium for its function and cleaves specific sites in A+U-rich regions of RNA.



Western blot analysis of extracts of various cell lines, using PPP1R8 antibody at 1:1000 dilution.

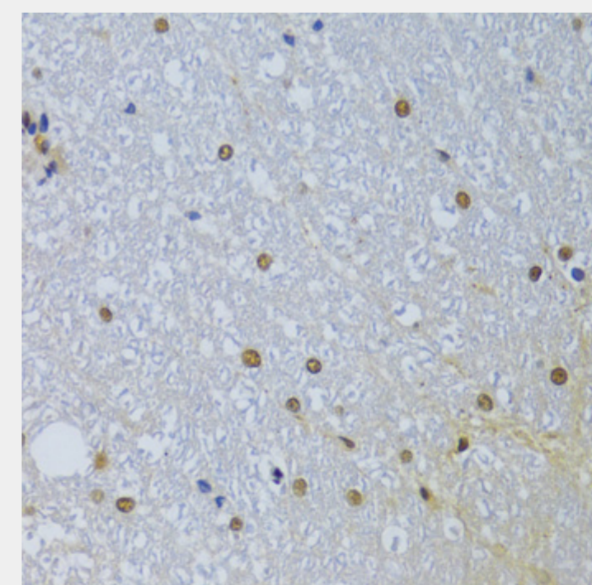
Secondary antibody: HRP Goat Anti-Rabbit IgG (H+L) at 1:10000 dilution.

Lysates/proteins: 25ug per lane.

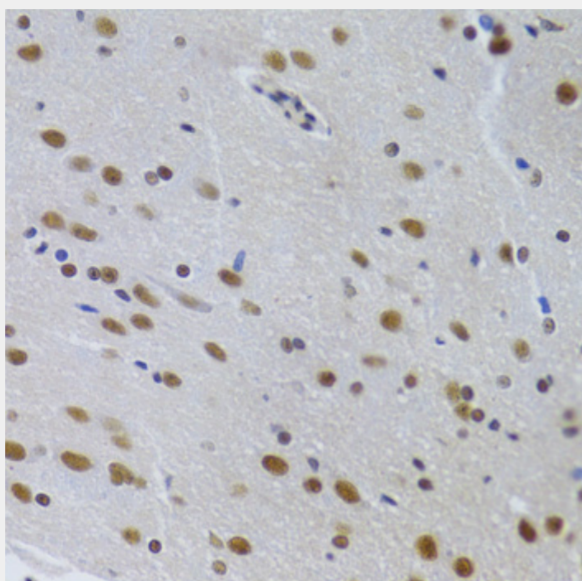
Blocking buffer: 3% nonfat dry milk in TBST.

Detection: ECL Basic Kit.

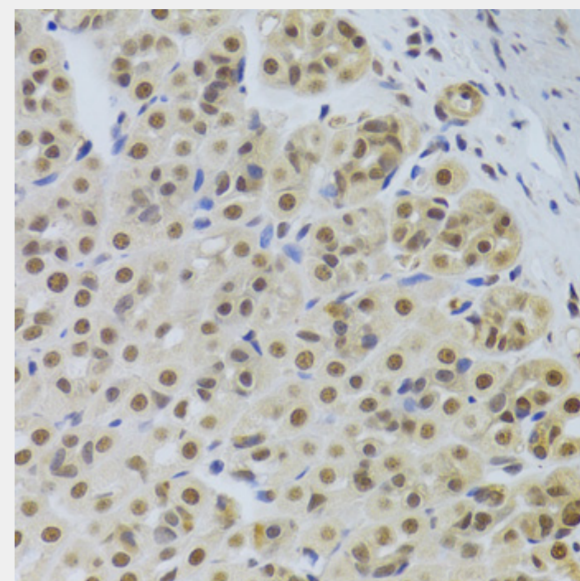
Exposure time: 30s.



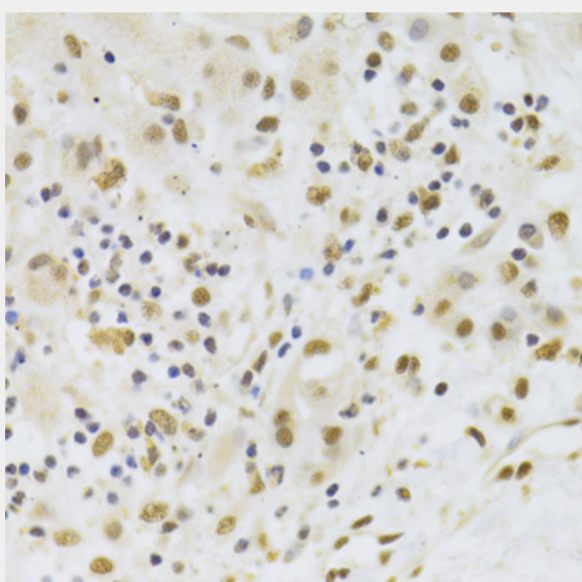
Immunohistochemistry of paraffin-embedded rat spinal cord using PPP1R8 Antibody at dilution of 1:100 (40x lens).



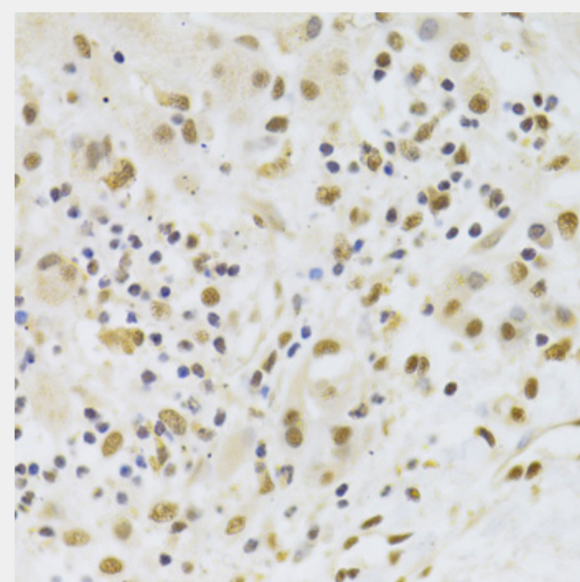
Immunohistochemistry of paraffin-embedded rat brain using PPP1R8 Antibody at dilution of 1:100 (40x lens).



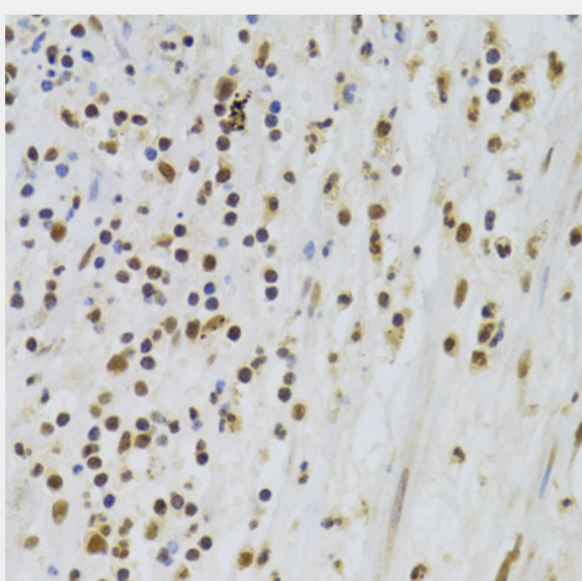
Immunohistochemistry of paraffin-embedded rat stomach using PPP1R8 Antibody at dilution of 1:100 (40x lens).



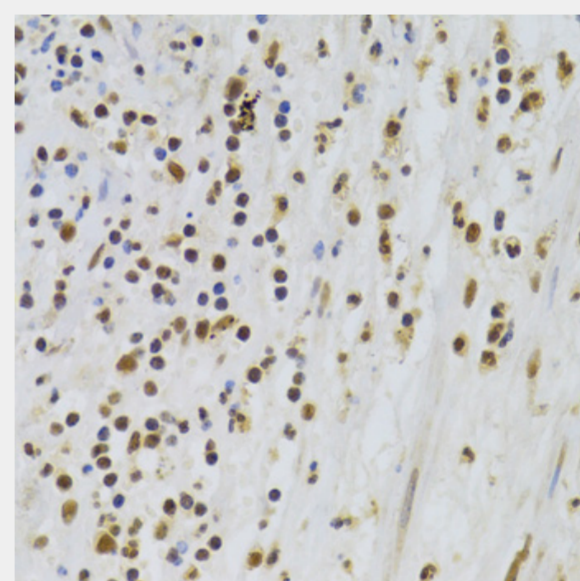
Immunohistochemistry of paraffin-embedded human liver cancer using PPP1R8 Antibody at dilution of 1:100 (40x lens).



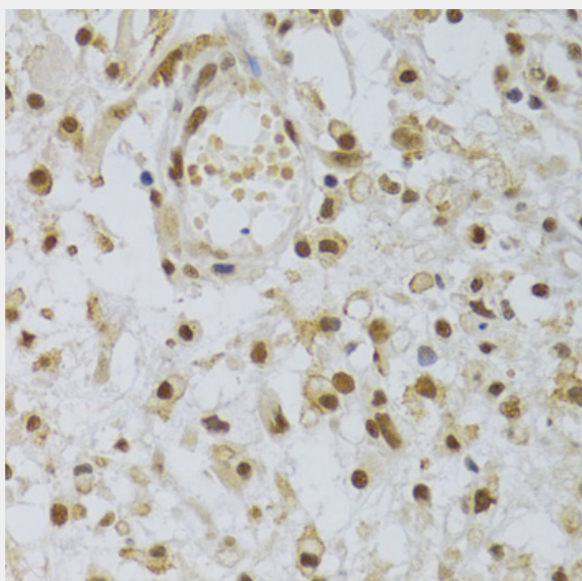
Immunohistochemistry of paraffin-embedded human appendicitis using PPP1R8 Antibody at dilution of 1:100 (40x lens).



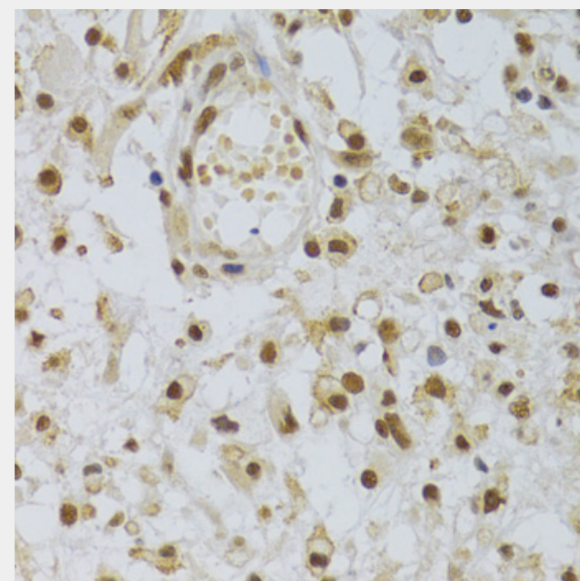
Immunohistochemistry of paraffin-embedded human brain astrocytoma using PPP1R8 Antibody at dilution of 1:100 (40x lens).



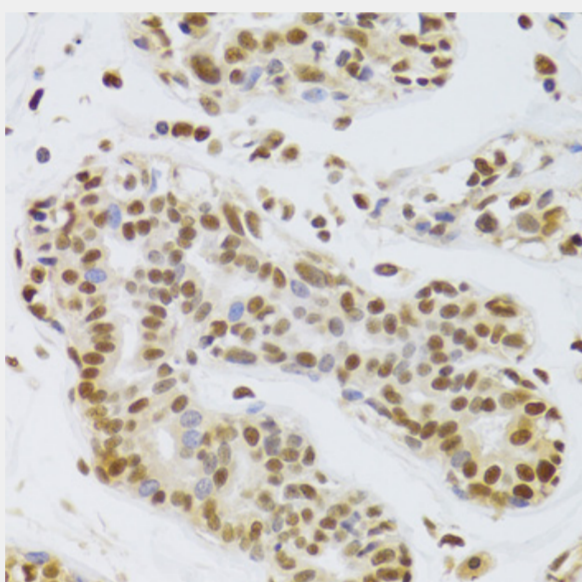
Immunohistochemistry of paraffin-embedded human breast using PPP1R8 Antibody at dilution of 1:100 (40x lens).



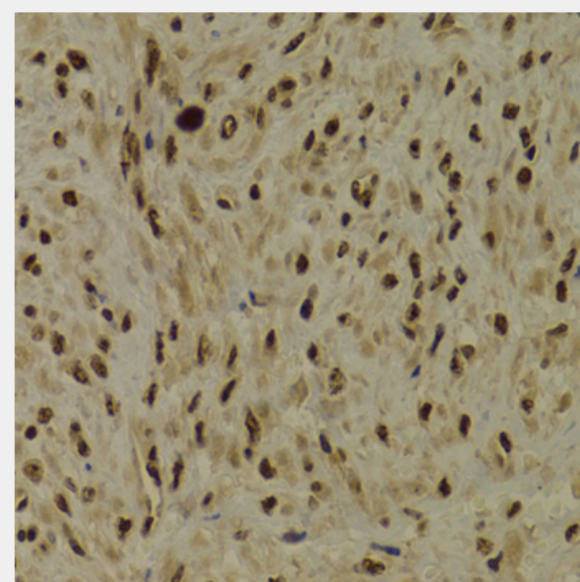
Immunohistochemistry of paraffin-embedded human breast cancer using PPP1R8 Antibody at dilution of 1:100 (40x lens).



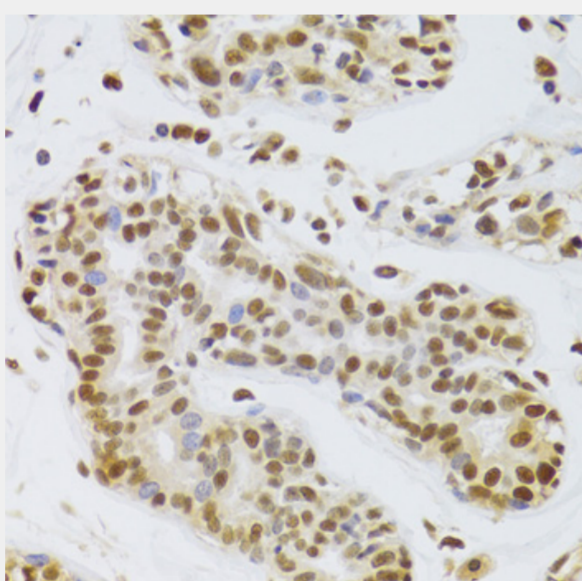
Immunohistochemistry of paraffin-embedded human stomach using PPP1R8 Antibody at dilution of 1:100 (40x lens).



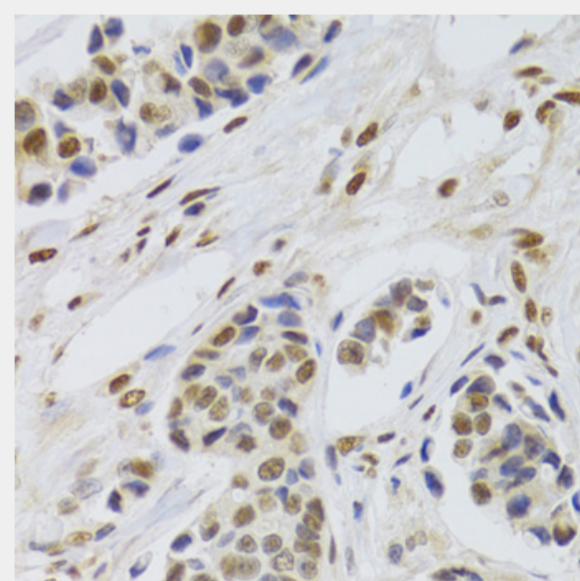
Immunohistochemistry of paraffin-embedded human gastric cancer using PPP1R8 Antibody at dilution of 1:100 (40x lens).



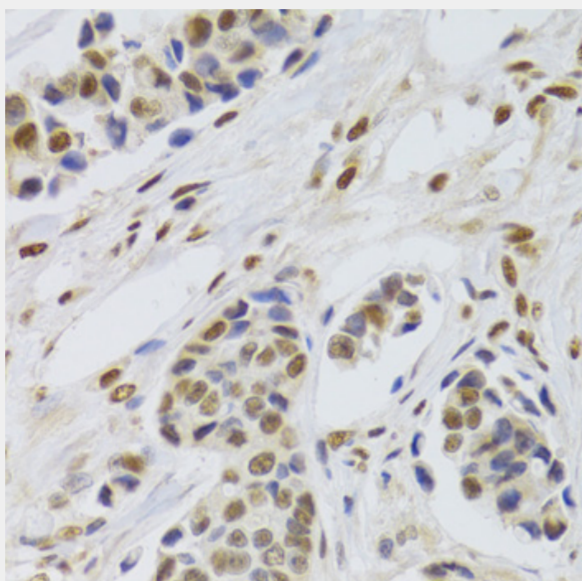
Immunohistochemistry of paraffin-embedded human adenomyosis using PPP1R8 Antibody at dilution of 1:100 (40x lens).



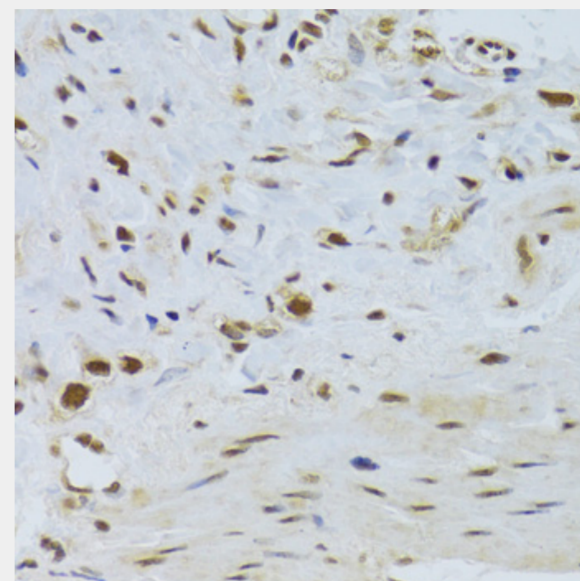
Immunohistochemistry of paraffin-embedded human leiomyoma of uterus using PPP1R8 Antibody at dilution of 1:100 (40x lens).



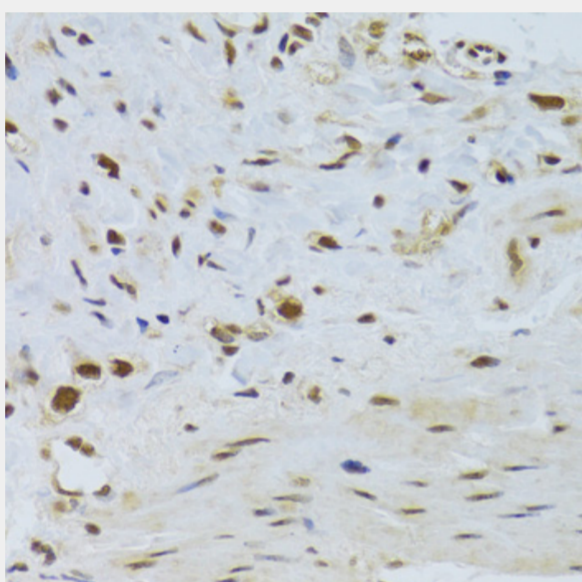
Immunohistochemistry of paraffin-embedded human adenomyosis using PPP1R8 Antibody at dilution of 1:100 (40x lens).



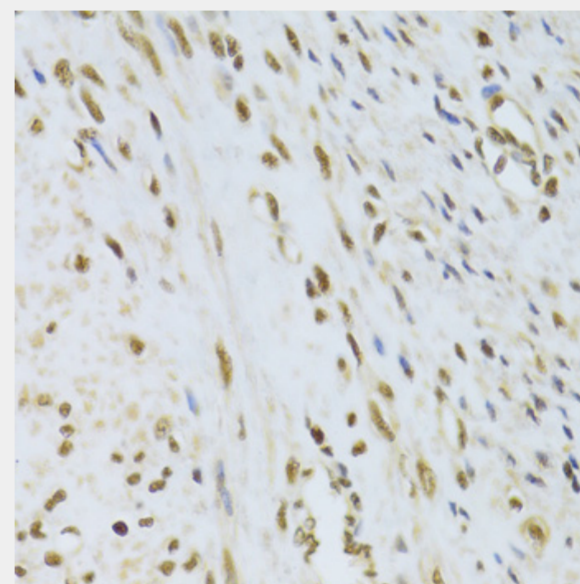
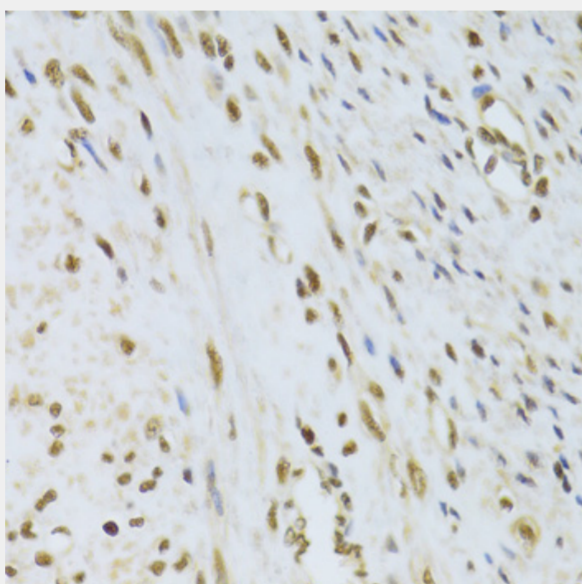
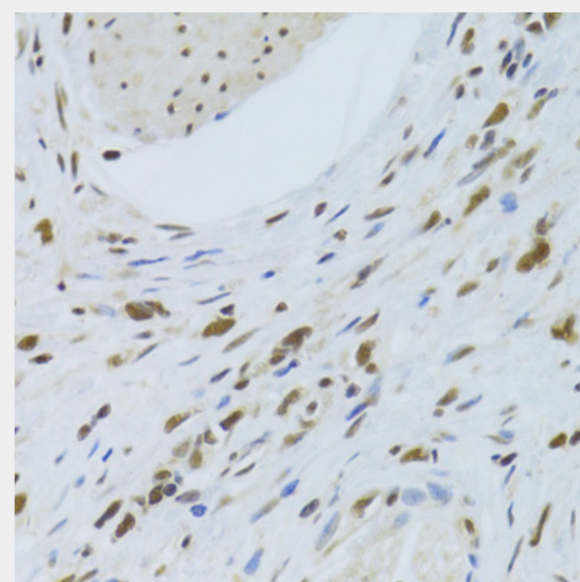
Immunohistochemistry of paraffin-embedded mouse liver using PPP1R8 Antibody at dilution of 1:100 (40x lens).

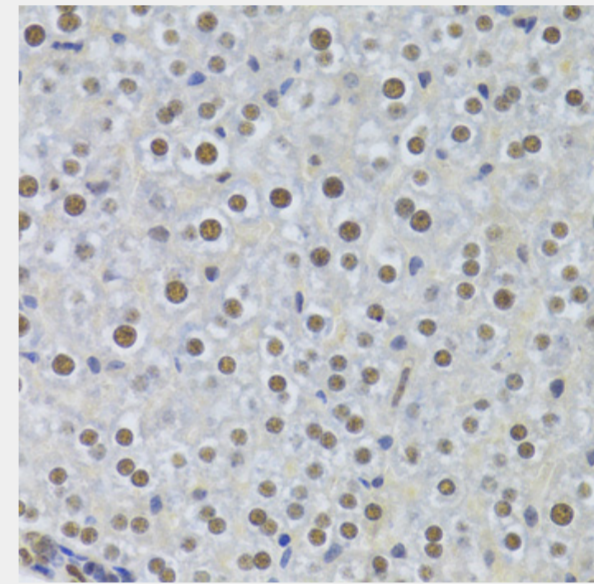
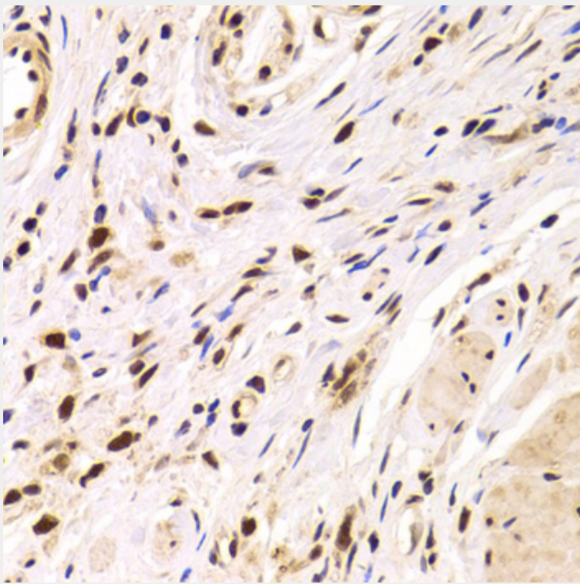
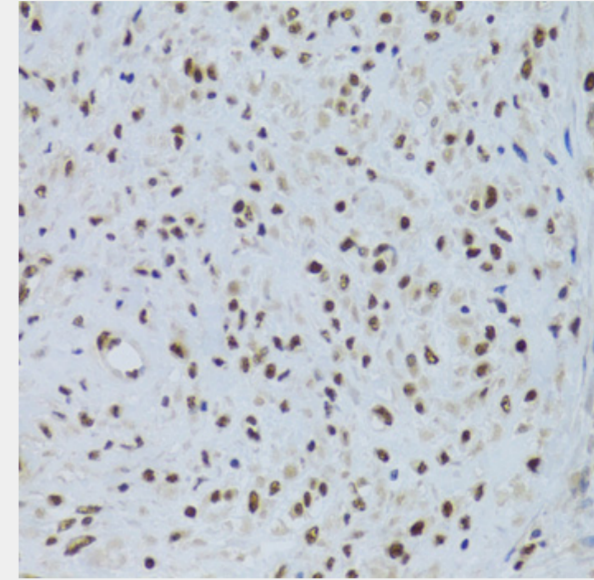
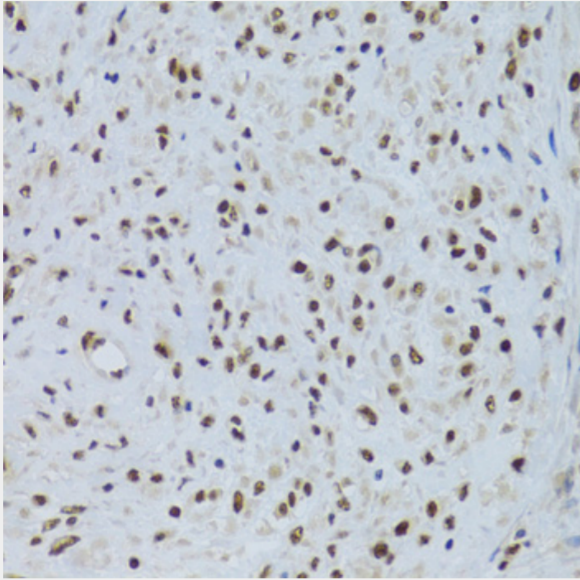


Immunohistochemistry of paraffin-embedded mouse brain using PPP1R8 Antibody at dilution of 1:100 (40x lens).

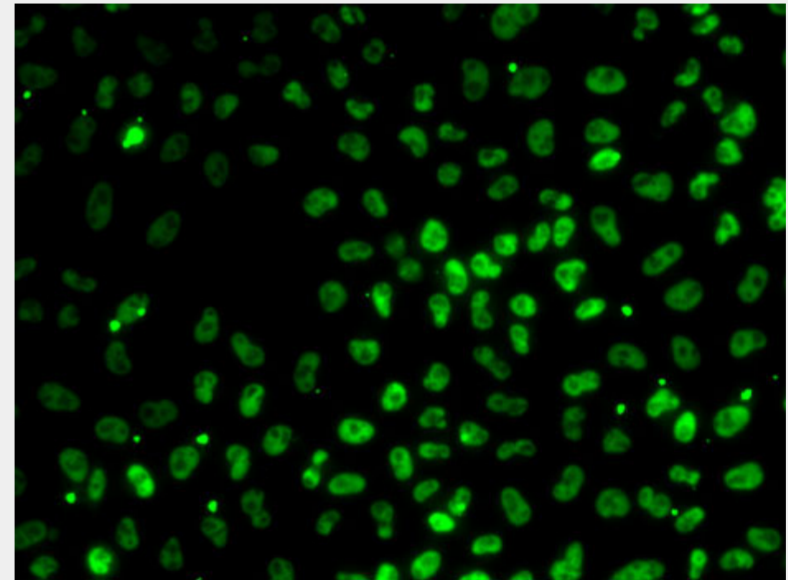
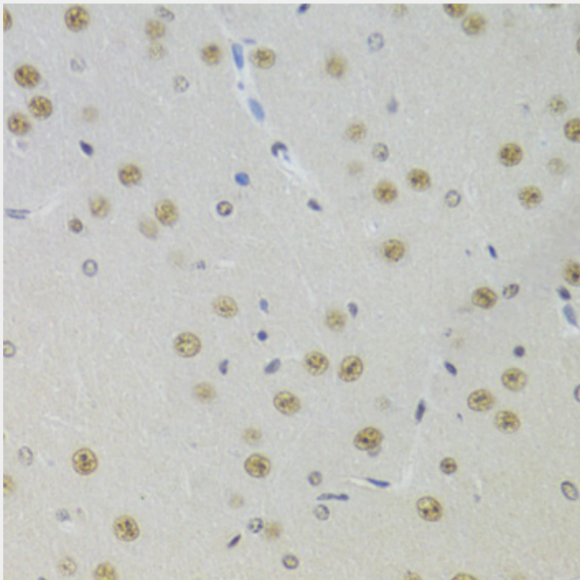


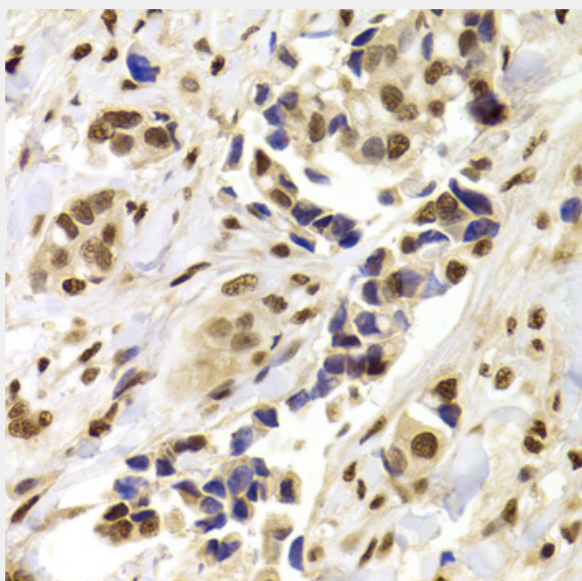
Immunofluorescence analysis of MCF7 cells using PPP1R8 antibody.



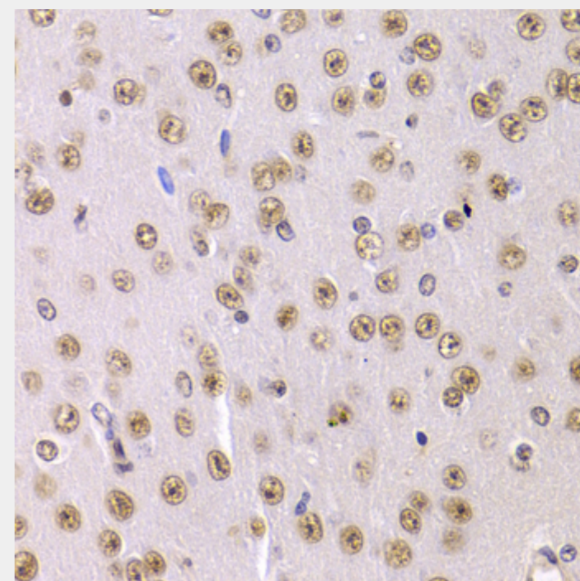


Immunohistochemistry of paraffin-embedded human gastric cancer using PPP1R8 Antibody at dilution of 1:100 (40x lens).

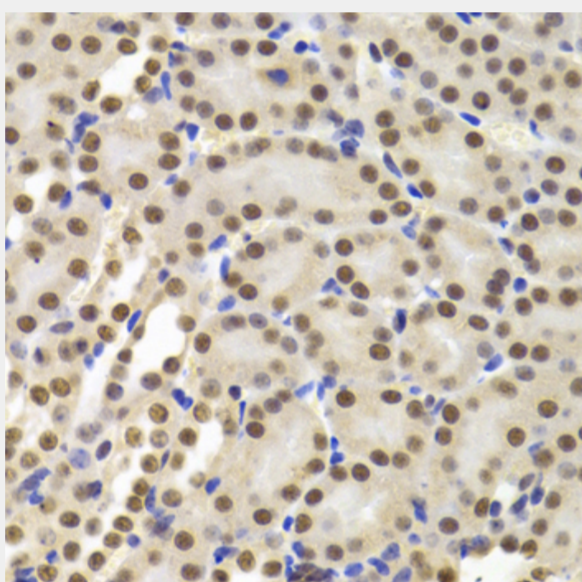




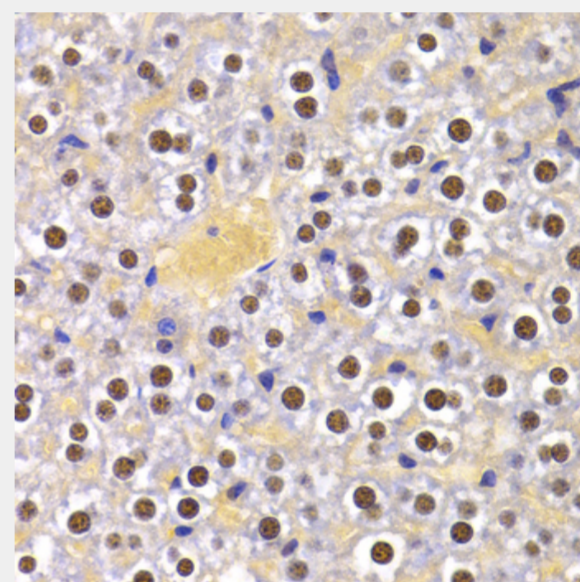
Immunohistochemistry of paraffin-embedded human breast cancer using PPP1R8 Antibody at dilution of 1:100 (40x lens).



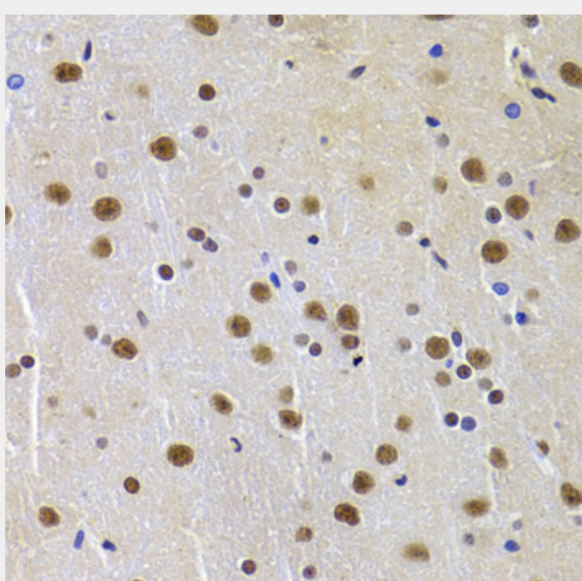
Immunohistochemistry of paraffin-embedded mouse brain using PPP1R8 Antibody at dilution of 1:100 (40x lens).



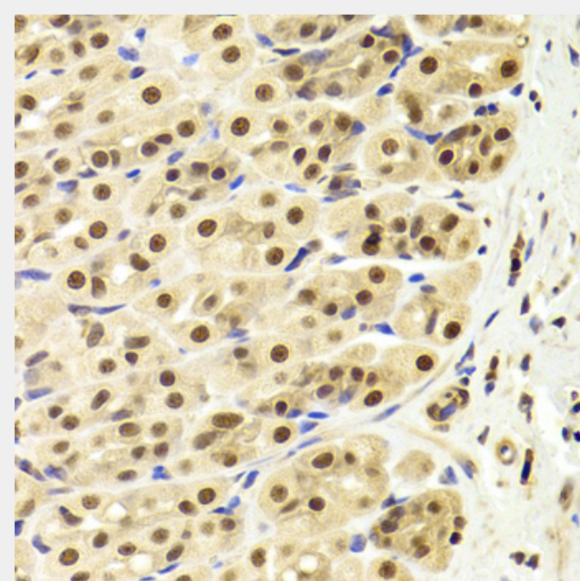
Immunohistochemistry of paraffin-embedded mouse kidney using PPP1R8 Antibody at dilution of 1:100 (40x lens).



Immunohistochemistry of paraffin-embedded mouse liver using PPP1R8 Antibody at dilution of 1:100 (40x lens).



Immunohistochemistry of paraffin-embedded rat brain using PPP1R8 Antibody at dilution of 1:100 (40x lens).



Immunohistochemistry of paraffin-embedded rat stomach using PPP1R8 Antibody at dilution of 1:100 (40x lens).

All products are for RESEARCH USE ONLY. Not for diagnostic & therapeutic purposes!