

MTA3 Polyclonal Antibody

Catalog No: tcba10383



Available Sizes

Size: 50ul

Size: 100ul

Size: 200ul



Specifications

Application:

WB,IHC

Research Area:

Cancer,Chromatin Remodeling,

Species Reactivity:

Human,Mouse,Rat

Host Species:

Rabbit

Isotype:

IgG

Form:

Liquid

Storage Buffer:

Buffer: PBS with 0.02% sodium azide, 50% glycerol, pH7.3.

Recommended Dilution:

WB 1:500 - 1:2000

IHC 1:50 - 1:200

Storage Instruction:

Store at -20°C. Avoid freeze / thaw cycles.

SwissProt:

Q9BTC8

Gene ID:

57504 (human);

Calculated Molecular Weight:

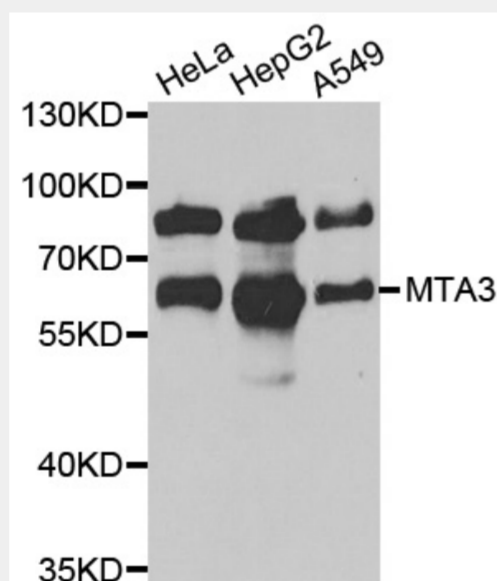
58kDa/67kDa

Purification:

Affinity purification

Cellular Location:

Nucleus,



Western blot analysis of extracts of various cell lines, using MTA3 antibody at 1:1000 dilution.

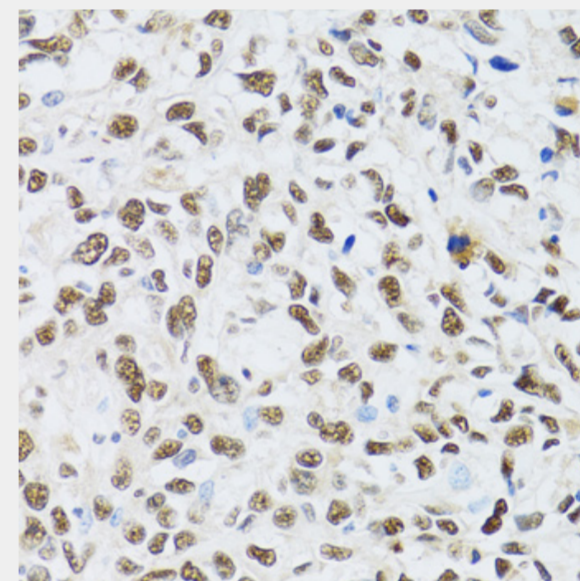
Secondary antibody: HRP Goat Anti-Rabbit IgG (H+L) at 1:10000 dilution.

Lysates/proteins: 25ug per lane.

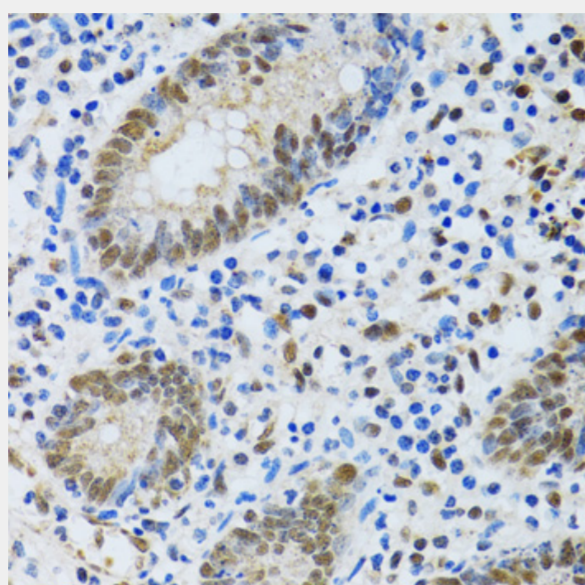
Blocking buffer: 3% nonfat dry milk in TBST.

Detection: ECL Basic Kit.

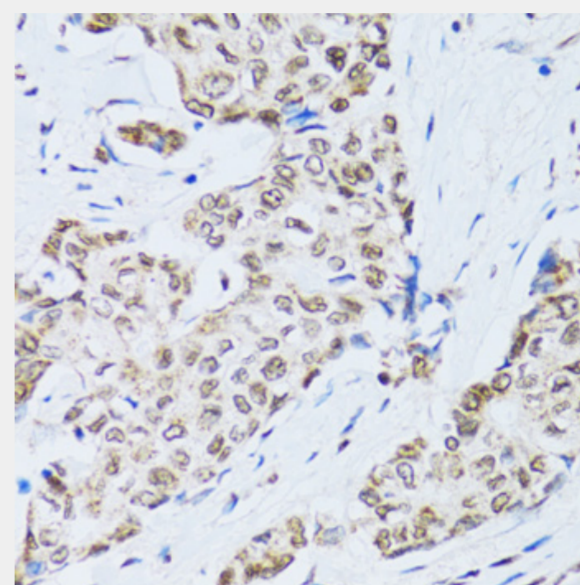
Exposure time: 30s.



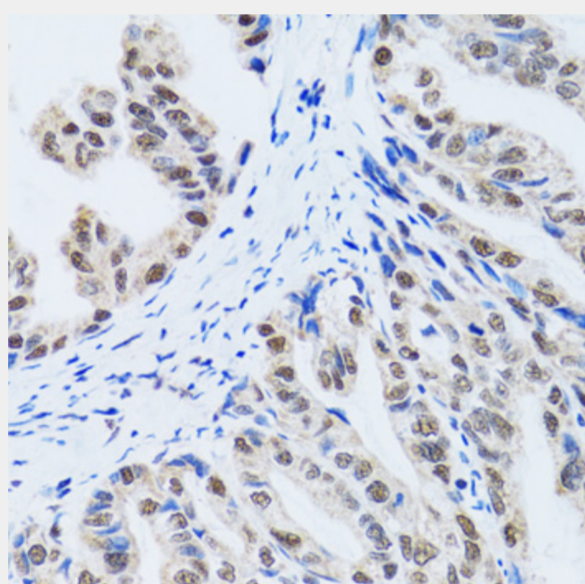
Immunohistochemistry of paraffin-embedded human liver cancer using MTA3 antibody at dilution of 1:100 (40x lens).



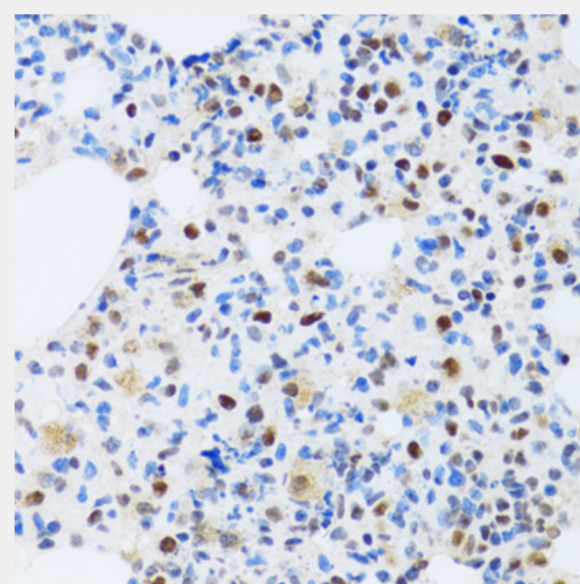
Immunohistochemistry of paraffin-embedded human vermiform appendix using MTA3 antibody at dilution of 1:100 (40x lens).



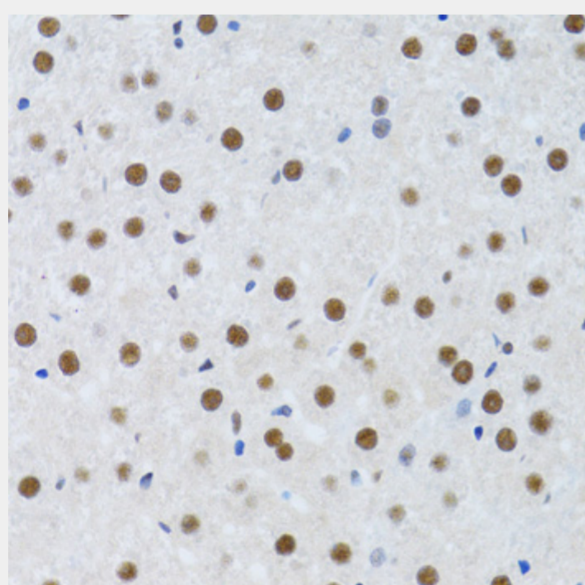
Immunohistochemistry of paraffin-embedded human breast cancer using MTA3 antibody at dilution of 1:100 (40x lens).



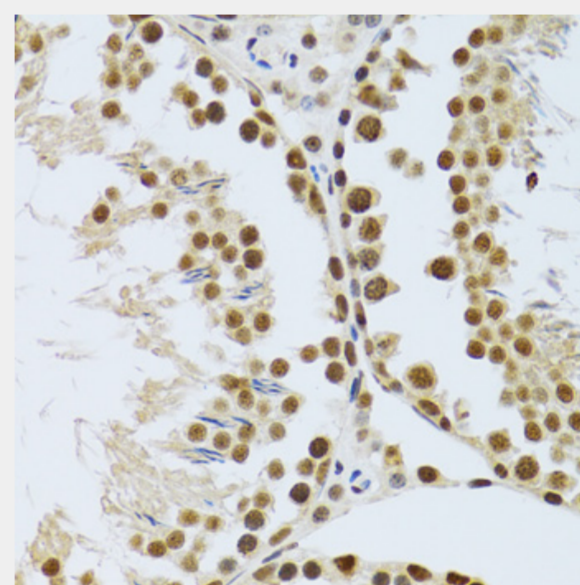
Immunohistochemistry of paraffin-embedded human gastric cancer using MTA3 antibody at dilution of 1:100 (40x lens).



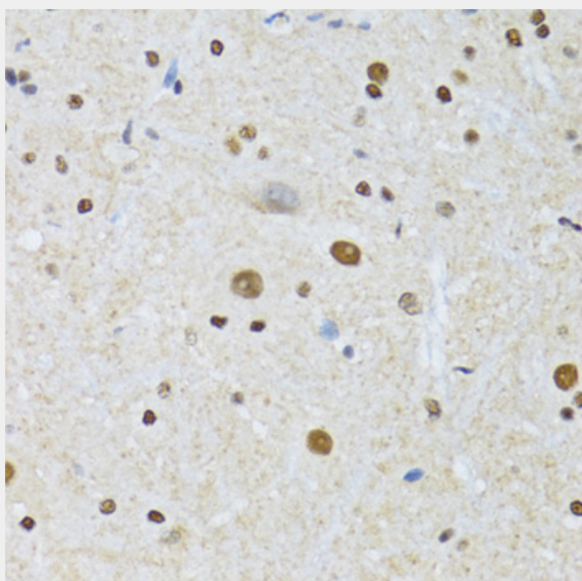
Immunohistochemistry of paraffin-embedded mouse lung using MTA3 antibody at dilution of 1:100 (40x lens).



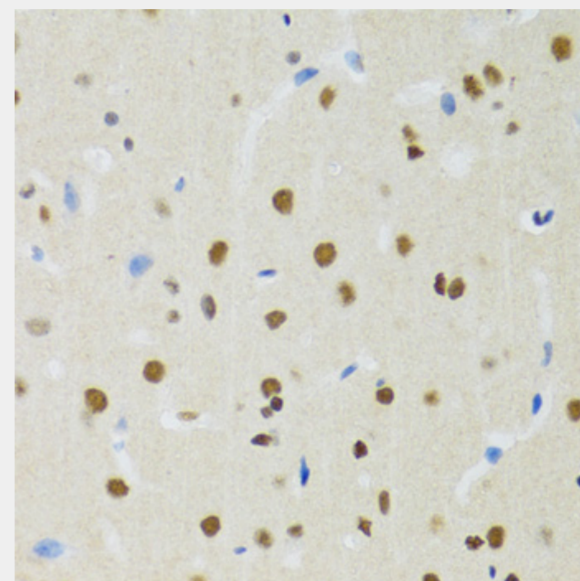
Immunohistochemistry of paraffin-embedded mouse liver using MTA3 antibody at dilution of 1:100 (40x lens).



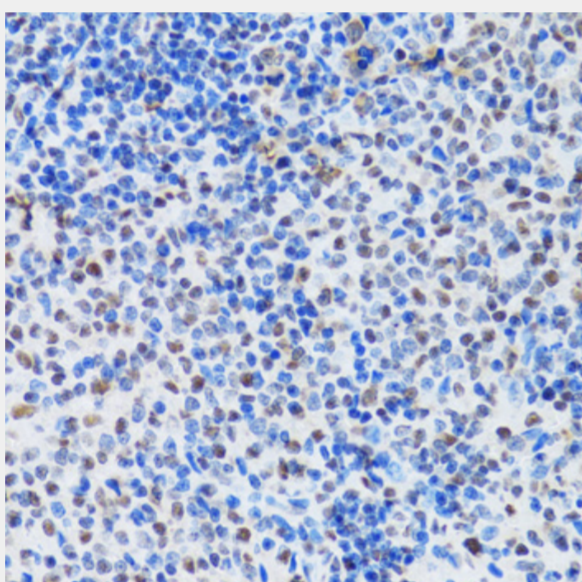
Immunohistochemistry of paraffin-embedded mouse testis using MTA3 antibody at dilution of 1:100 (40x lens).



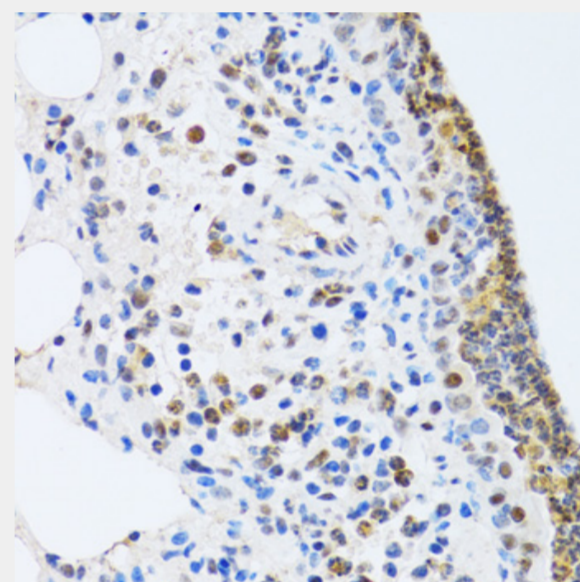
Immunohistochemistry of paraffin-embedded mouse spinal cord using MTA3 antibody at dilution of 1:100 (40x lens).



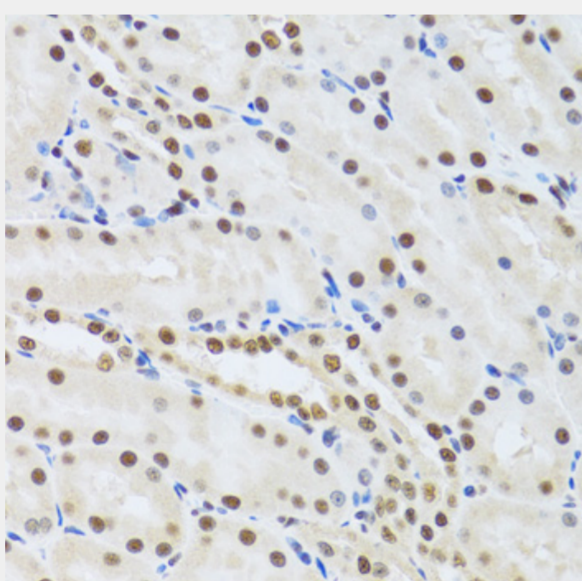
Immunohistochemistry of paraffin-embedded mouse brain using MTA3 antibody at dilution of 1:100 (40x lens).



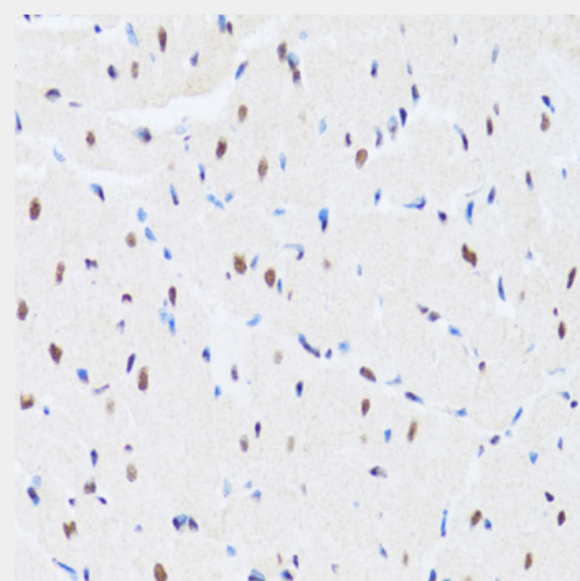
Immunohistochemistry of paraffin-embedded mouse spleen using MTA3 antibody at dilution of 1:100 (40x lens).



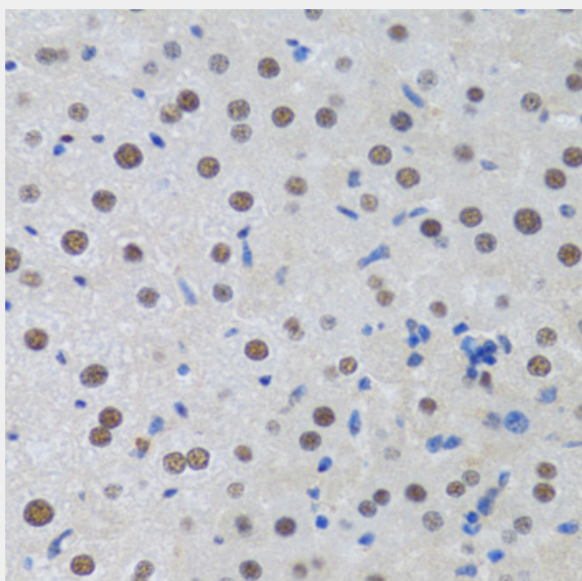
Immunohistochemistry of paraffin-embedded rat lung using MTA3 antibody at dilution of 1:100 (40x lens).



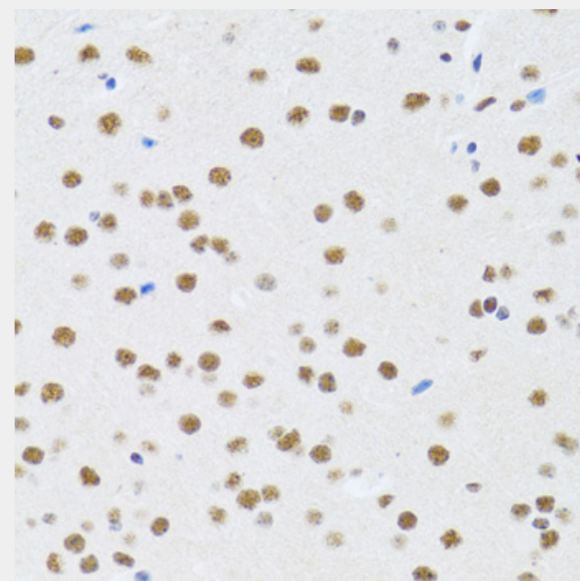
Immunohistochemistry of paraffin-embedded mouse kidney using MTA3 antibody at dilution of 1:100 (40x lens).



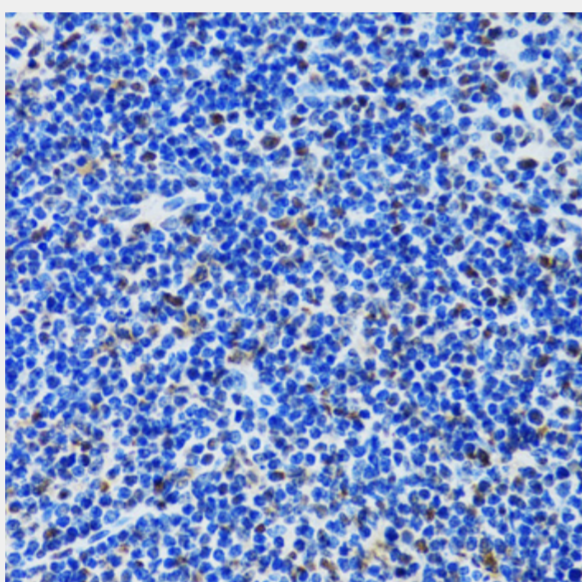
Immunohistochemistry of paraffin-embedded mouse heart using MTA3 antibody at dilution of 1:100 (40x lens).



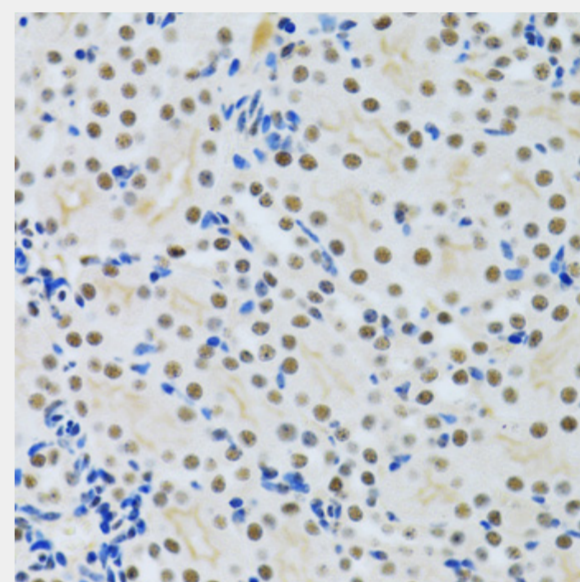
Immunohistochemistry of paraffin-embedded rat liver using MTA3 antibody at dilution of 1:100 (40x lens).



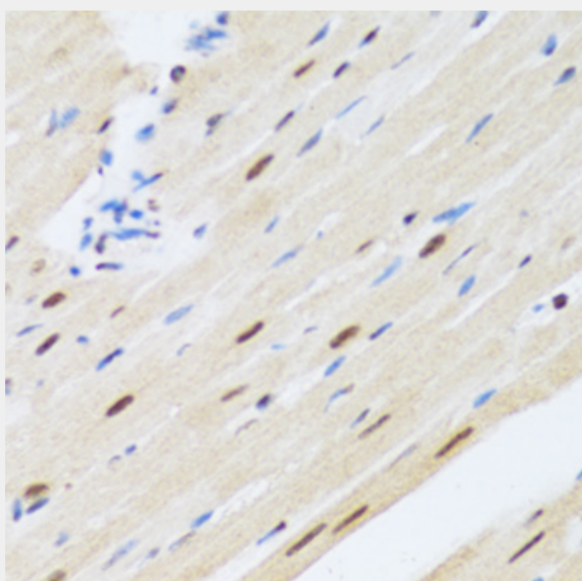
Immunohistochemistry of paraffin-embedded rat brain using MTA3 antibody at dilution of 1:100 (40x lens).



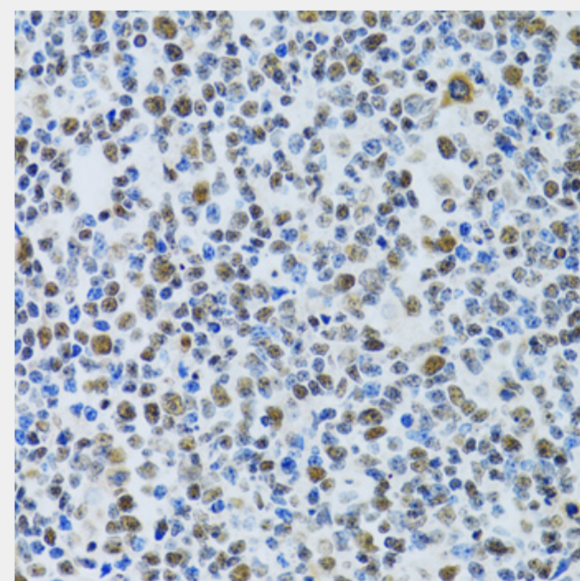
Immunohistochemistry of paraffin-embedded rat spleen using MTA3 antibody at dilution of 1:100 (40x lens).



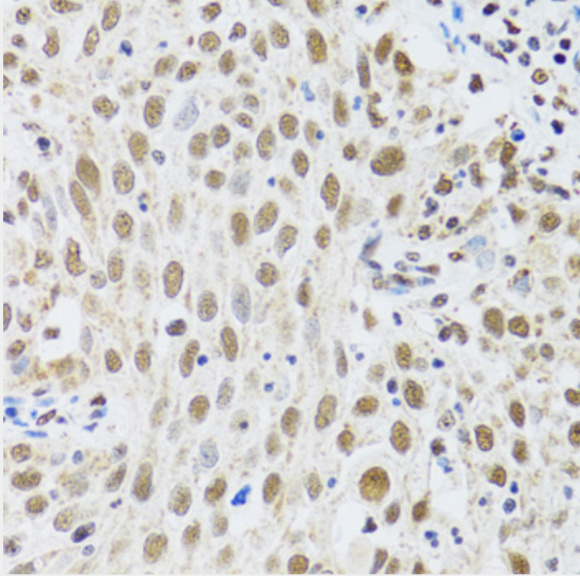
Immunohistochemistry of paraffin-embedded rat kidney using MTA3 antibody at dilution of 1:100 (40x lens).



Immunohistochemistry of paraffin-embedded rat heart using MTA3 antibody at dilution of 1:100 (40x lens).



Immunohistochemistry of paraffin-embedded human tonsil using MTA3 antibody at dilution of 1:100 (40x lens).



Immunohistochemistry of paraffin-embedded human lung cancer using MTA3 antibody at dilution of 1:100 (40x lens).

All products are for RESEARCH USE ONLY. Not for diagnostic & therapeutic purposes!