

# LMNB2 Polyclonal Antibody

Catalog No: tcba10218



## Available Sizes

**Size:** 50ul

**Size:** 100ul

**Size:** 200ul



## Specifications

**Application:**

WB,IHC,IF

**Research Area:**

Cancer,Apoptosis,Cell Biology,

**Species Reactivity:**

Human,Mouse,Rat

**Host Species:**

Rabbit

**Isotype:**

IgG

**Form:**

Liquid

**Storage Buffer:**

Buffer: PBS with 0.02% sodium azide, 50% glycerol, pH7.3.

**Recommended Dilution:**

WB 1:500 - 1:2000

IHC 1:50 - 1:200

IF 1:50 - 1:100

**Storage Instruction:**

Store at -20°C. Avoid freeze / thaw cycles.

**Alternative Names:**

EPM9;LAMB2;LMN2

**SwissProt:**

Q03252

**Gene ID:**

84823 (human);

**Calculated Molecular Weight:**

69kDa

**Purification:**

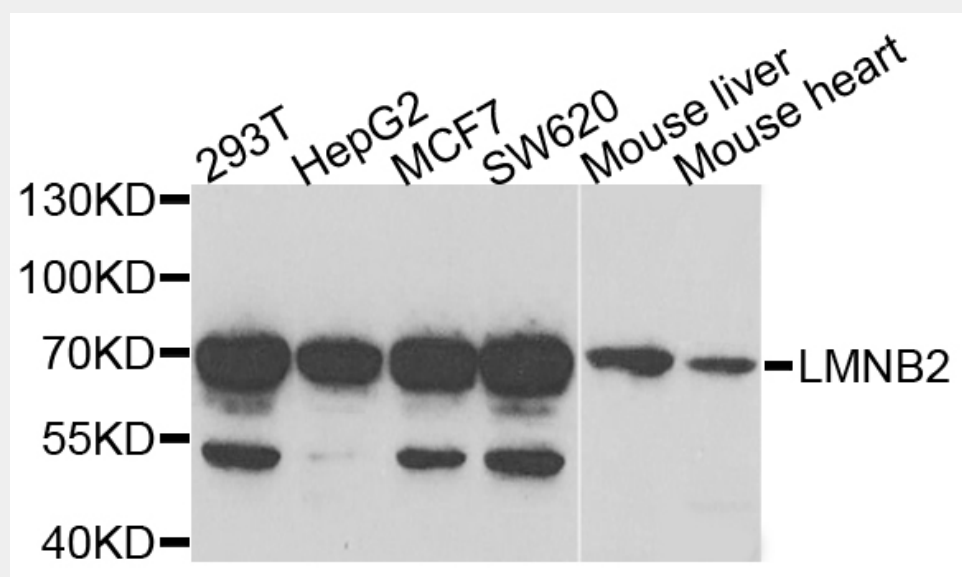
Affinity purification

**Cellular Location:**

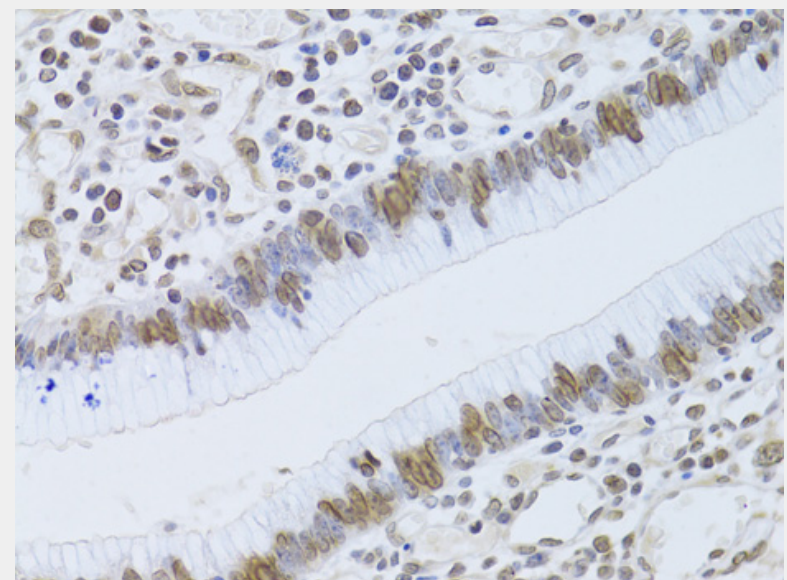
Lipid-anchor,Nucleoplasmic side,Nucleus inner membrane,

**Product Description**

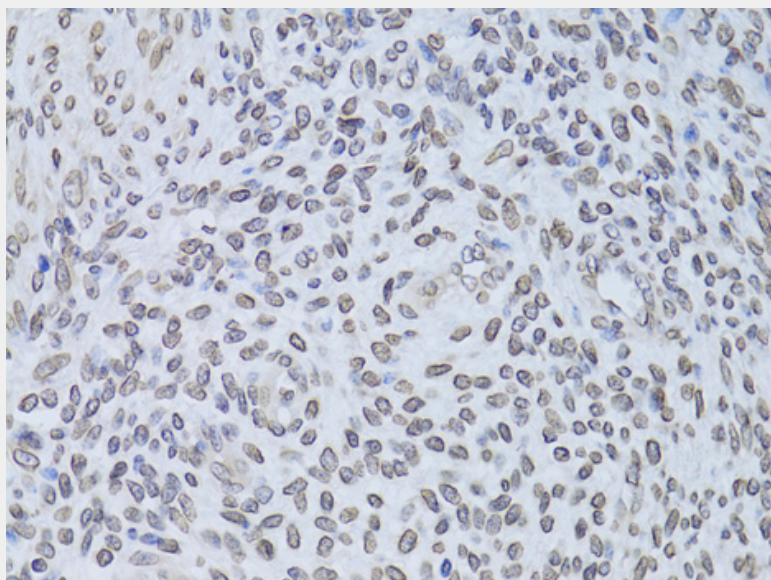
This gene encodes a B type nuclear lamin. The nuclear lamina consists of a two-dimensional matrix of proteins located next to the inner nuclear membrane. The lamin family of proteins make up the matrix and are highly conserved in evolution. During mitosis, the lamina matrix is reversibly disassembled as the lamin proteins are phosphorylated. Lamin proteins are thought to be involved in nuclear stability, chromatin structure and gene expression. Vertebrate lamins consist of two types, A and B. Mutations in this gene are associated with acquired partial lipodystrophy.



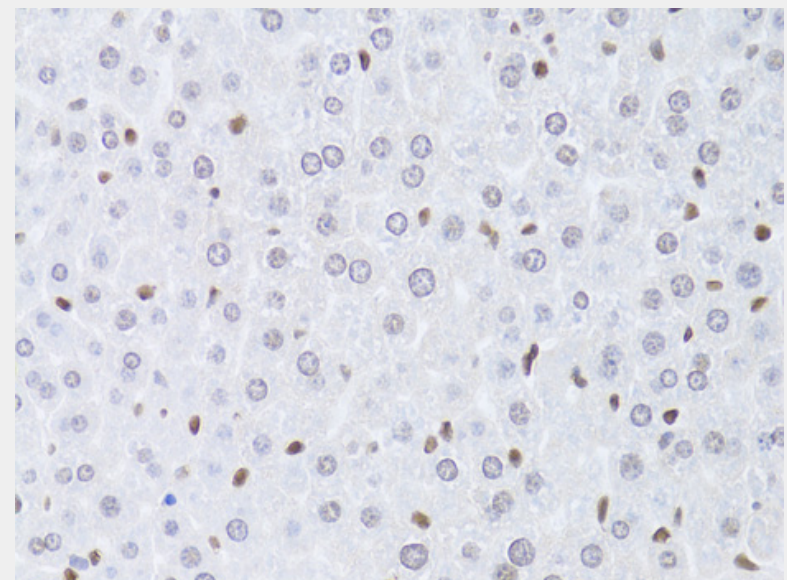
Western blot analysis of extracts of various cell lines, using LMNB2 antibody at 1:1000 dilution.  
Secondary antibody: HRP Goat Anti-Rabbit IgG (H+L) at 1:10000 dilution.  
Lysates/proteins: 25ug per lane.  
Blocking buffer: 3% nonfat dry milk in TBST.  
Detection: ECL Enhanced Kit.  
Exposure time: 90s.



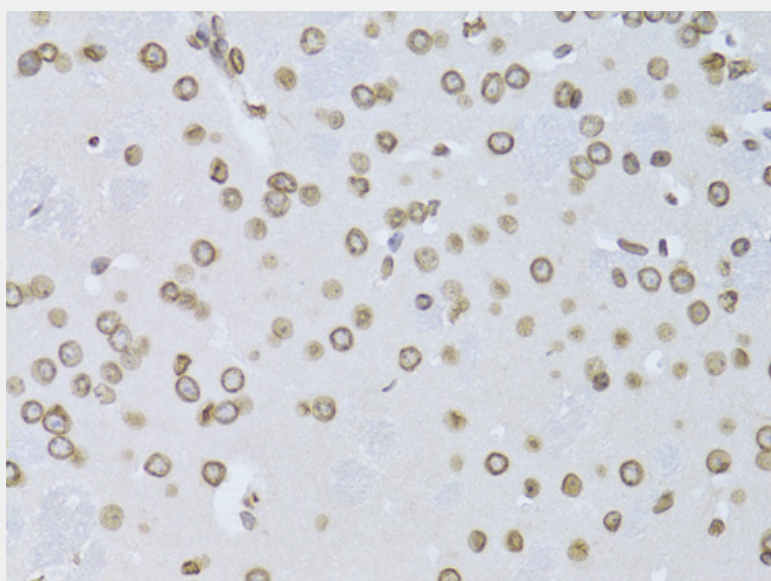
Immunohistochemistry of paraffin-embedded human gastric cancer using LMNB2 Antibody at dilution of 1:100 (40x lens).



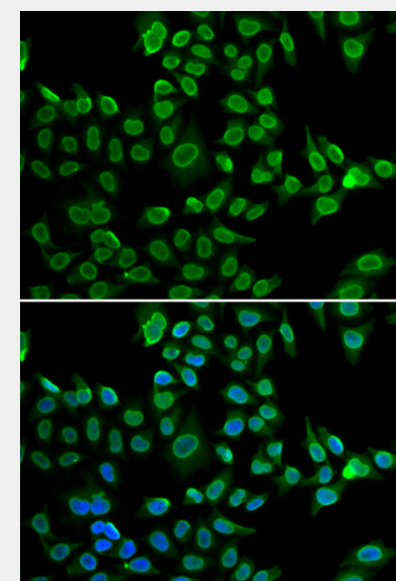
Immunohistochemistry of paraffin-embedded human adenomyosis using LMNB2 Antibody at dilution of 1:100 (40x lens).



Immunohistochemistry of paraffin-embedded mouse liver using LMNB2 Antibody at dilution of 1:100 (40x lens).

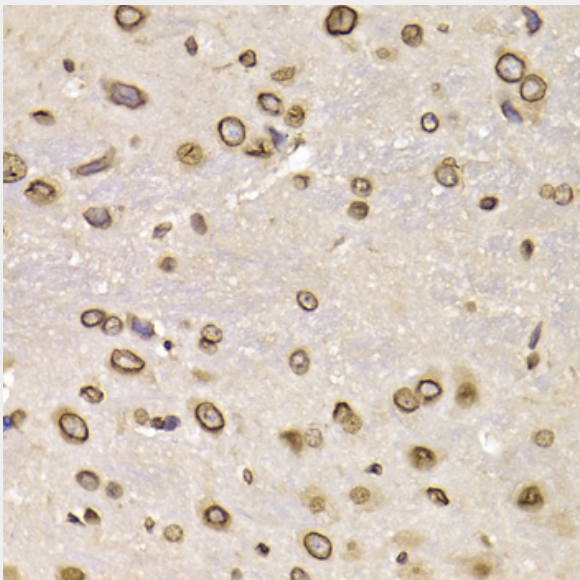


Immunohistochemistry of paraffin-embedded mouse brain using LMNB2 Antibody at dilution of 1:100 (40x lens).

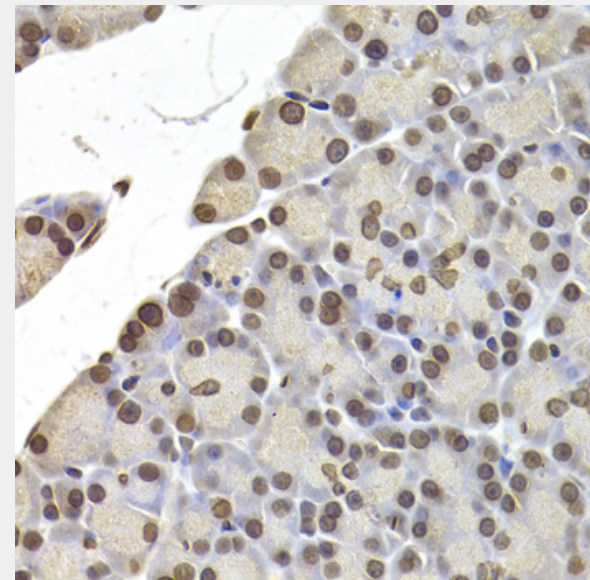


Immunofluorescence analysis of U2OS cells using LMNB2 antibody. Blue: DAPI for nuclear staining.

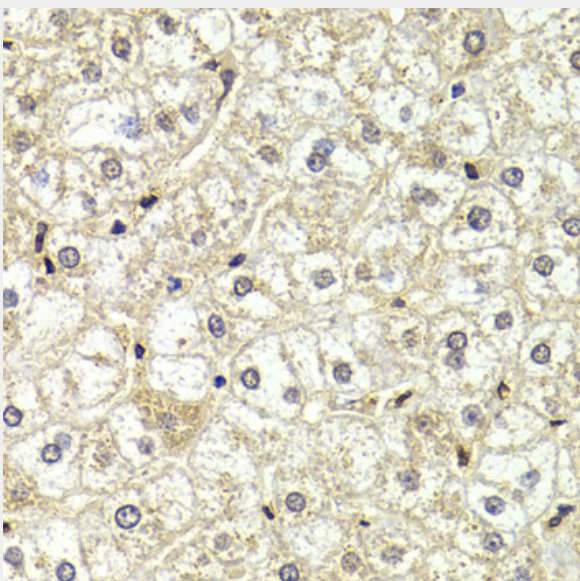




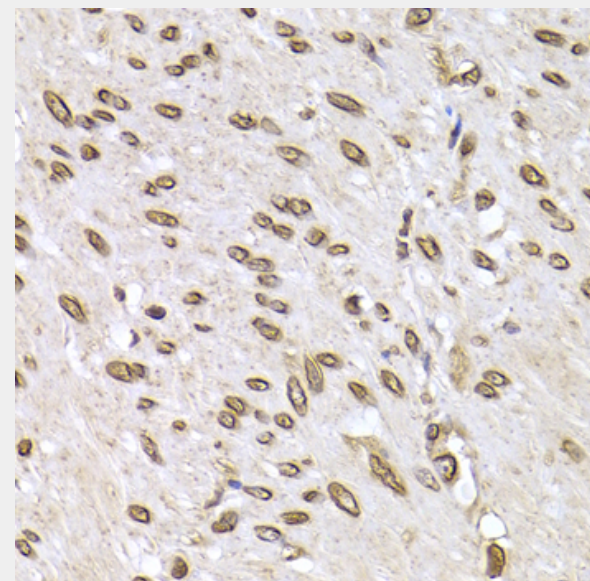
Immunohistochemistry of paraffin-embedded rat brain using LMNB2 Antibody at dilution of 1:200 (40x lens).



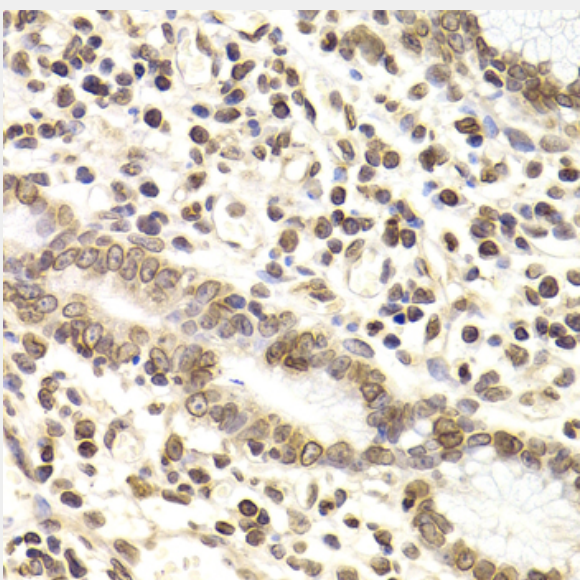
Immunohistochemistry of paraffin-embedded rat pancreas using LMNB2 Antibody at dilution of 1:200 (40x lens).



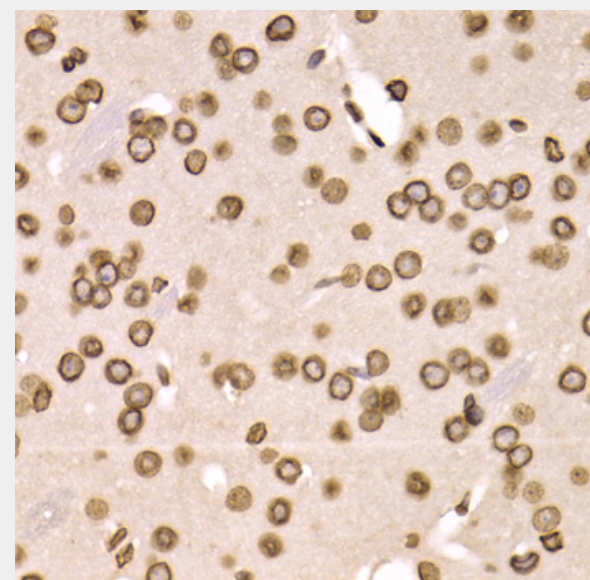
Immunohistochemistry of paraffin-embedded human liver injury using LMNB2 Antibody at dilution of 1:200 (40x lens).



Immunohistochemistry of paraffin-embedded human colon carcinoma using LMNB2 Antibody at dilution of 1:200 (40x lens).

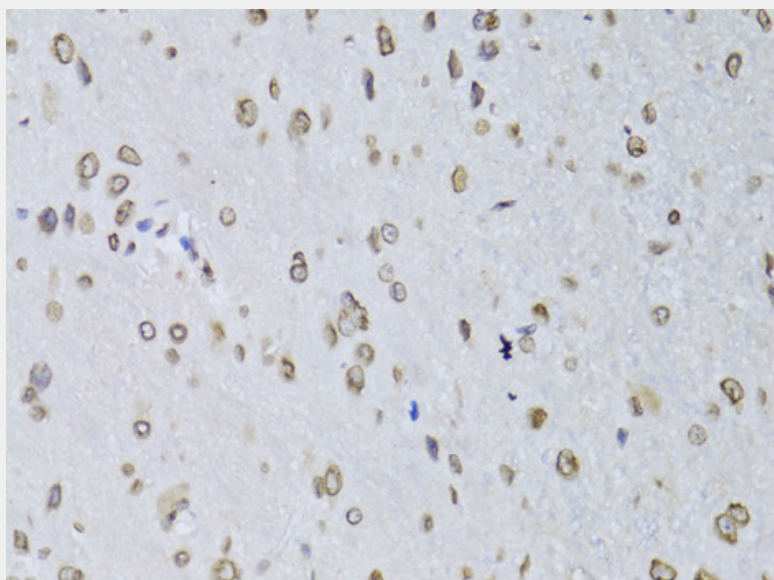


Immunohistochemistry of paraffin-embedded human gastric cancer using LMNB2 Antibody at dilution of 1:200 (40x lens).

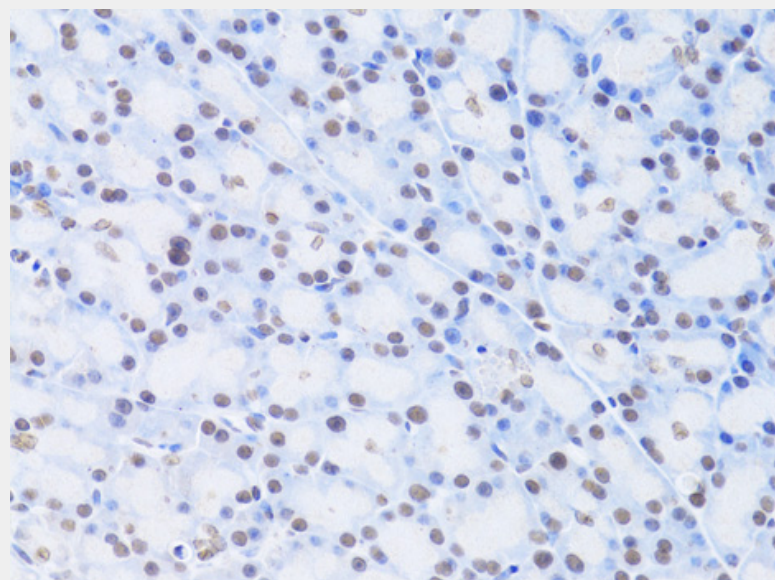


Immunohistochemistry of paraffin-embedded mouse brain using LMNB2 Antibody at dilution of 1:200 (40x lens).





Immunohistochemistry of paraffin-embedded rat brain using LMNB2 Antibody at dilution of 1:100 (40x lens).



Immunohistochemistry of paraffin-embedded rat pancreas using LMNB2 Antibody at dilution of 1:100 (40x lens).

All products are for RESEARCH USE ONLY. Not for diagnostic & therapeutic purposes!