

# AAAS Polyclonal Antibody

Catalog No: tcba10163



## Available Sizes

---

**Size:** 50ul

**Size:** 100ul

**Size:** 200ul



## Specifications

---

**Application:**

WB,IHC,IF

**Research Area:**

Neuroscience,

**Species Reactivity:**

Human,Mouse,Rat

**Host Species:**

Rabbit

**Isotype:**

IgG

**Form:**

Liquid

**Storage Buffer:**

Buffer: PBS with 0.02% sodium azide, 50% glycerol, pH7.3.

**Recommended Dilution:**

WB 1:500 - 1:2000

IHC 1:50 - 1:200

IF 1:50 - 1:200

**Storage Instruction:**

Store at -20°C. Avoid freeze / thaw cycles.

**Alternative Names:**

AAA;AAASb;ADRACALA;ADRACALIN;ALADIN;GL003

**SwissProt:**

Q9NRG9

**Gene ID:**

8086 (human);

**Calculated Molecular Weight:**

55kDa/59kDa

**Purification:**

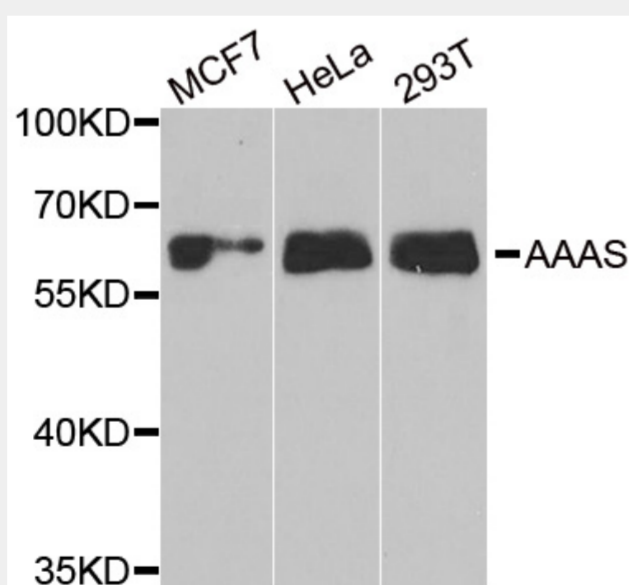
Affinity purification

**Cellular Location:**

Nucleus,nuclear pore complex,

**Product Description**

The protein encoded by this gene is a member of the WD-repeat family of regulatory proteins and may be involved in normal development of the peripheral and central nervous system. The encoded protein is part of the nuclear pore complex and is anchored there by NDC1. Defects in this gene are a cause of achalasia-addisonianism-alacrima syndrome (AAAS), also called triple-A syndrome or Allgrove syndrome. Two transcript variants encoding different isoforms have been found for this gene.



Western blot analysis of extracts of various cell lines, using AAAS antibody at 1:1000 dilution.

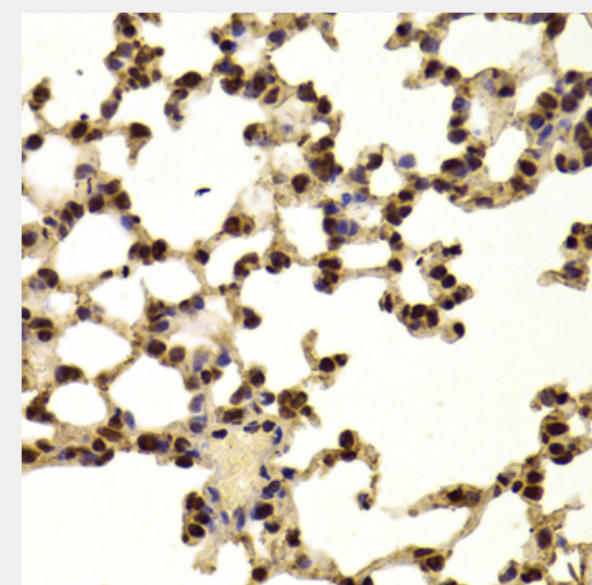
Secondary antibody: HRP Goat Anti-Rabbit IgG (H+L) at 1:10000 dilution.

Lysates/proteins: 25ug per lane.

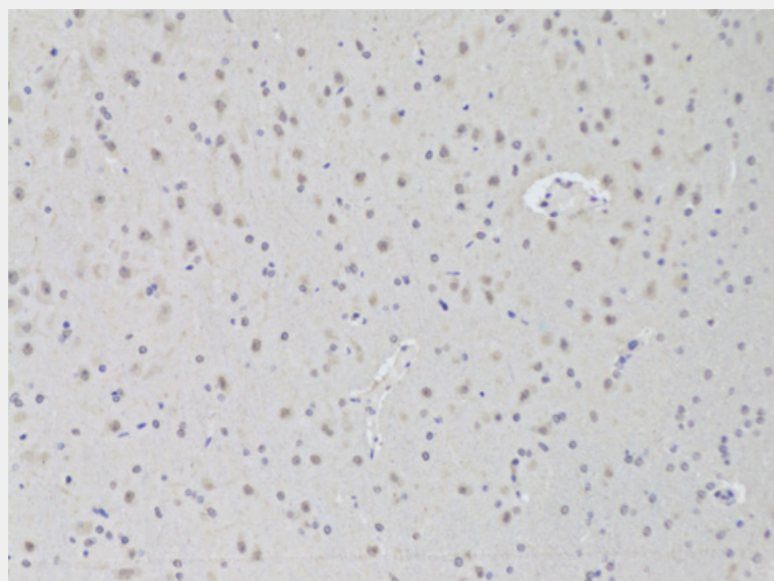
Blocking buffer: 3% nonfat dry milk in TBST.

Detection: ECL Basic Kit.

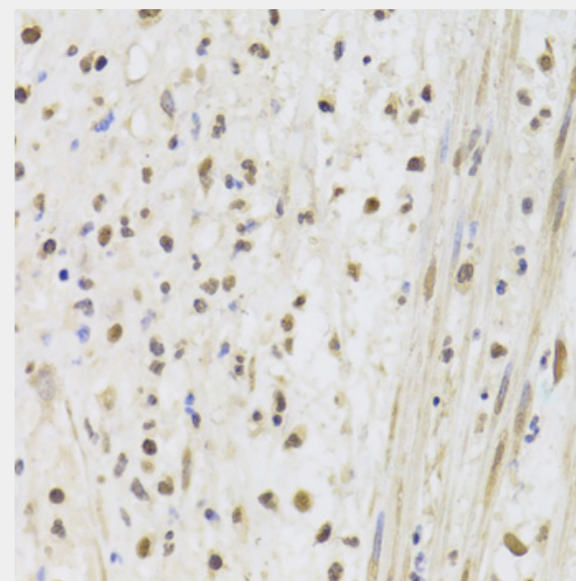
Exposure time: 30s.



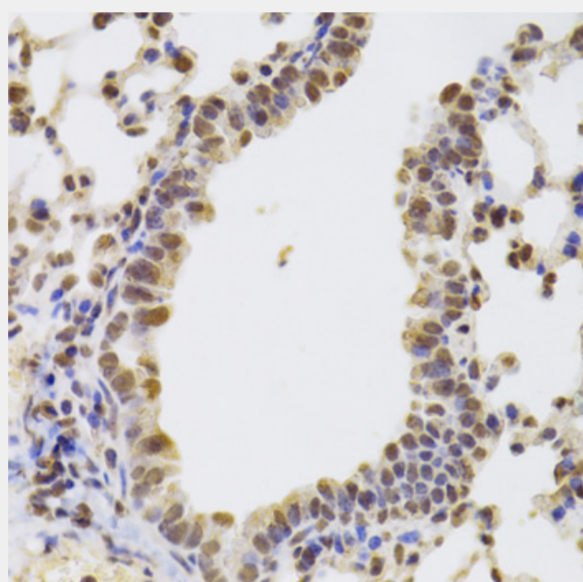
Immunohistochemistry of paraffin-embedded mouse lung using AAAS Antibody at dilution of 1:100 (40x lens).



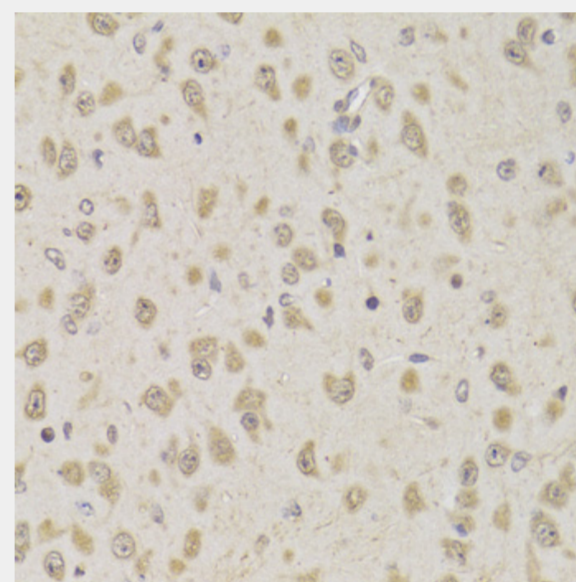
Immunohistochemistry of paraffin-embedded rat brain using AAAS Antibody at dilution of 1:100 (20x lens).



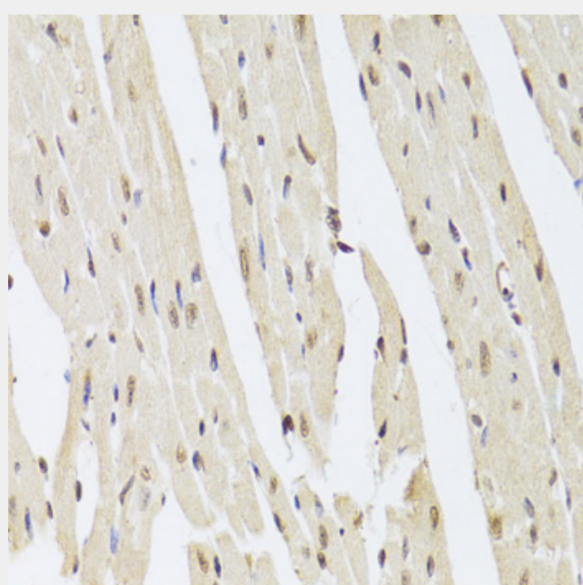
Immunohistochemistry of paraffin-embedded human appendicitis using AAAS Antibody at dilution of 1:100 (40x lens).



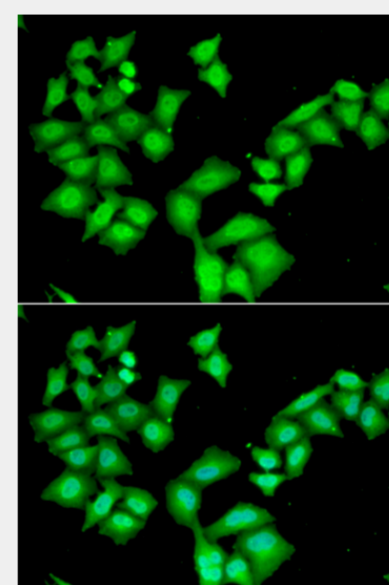
Immunohistochemistry of paraffin-embedded mouse lung using AAAS Antibody at dilution of 1:100 (40x lens).



Immunohistochemistry of paraffin-embedded mouse brain using AAAS Antibody at dilution of 1:100 (40x lens).



Immunohistochemistry of paraffin-embedded mouse heart using AAAS Antibody at dilution of 1:100 (40x lens).



Immunofluorescence analysis of HeLa cells using AAAS antibody. Blue: DAPI for nuclear staining.

All products are for RESEARCH USE ONLY. Not for diagnostic & therapeutic purposes!