

SPN Polyclonal Antibody

Catalog No: tcba10148



Available Sizes

Size: 50ul

Size: 100ul

Size: 200ul



Specifications

Application:

WB,IHC

Research Area:

Cancer,Stem cells,Apoptosis,Immunology,

Species Reactivity:

Human,Mouse

Host Species:

Rabbit

Isotype:

IgG

Form:

Liquid

Storage Buffer:

Buffer: PBS with 0.02% sodium azide, 50% glycerol, pH7.3.

Recommended Dilution:

WB 1:500 - 1:2000

IHC 1:50 - 1:200

Storage Instruction:

Store at -20°C. Avoid freeze / thaw cycles.

Alternative Names:

CD43;GALGP;GPL115;LSN

SwissProt:

P16150

Gene ID:

6693 (human);

Calculated Molecular Weight:

40kDa

Purification:

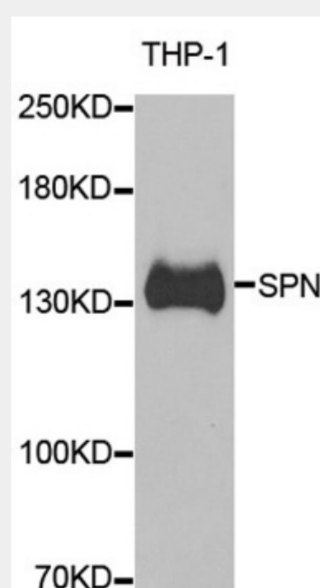
Affinity purification

Cellular Location:

Membrane,Single-pass type I membrane protein,

Product Description

The protein encoded by this gene is a major sialoglycoprotein found on the surface of thymocytes, T lymphocytes, monocytes, granulocytes, and some B lymphocytes. It may be part of a physiologic ligand-receptor complex involved in T-cell activation. During T-cell activation, this protein is actively removed from the T-cell-APC (antigen-presenting cell) contact site, suggesting a negative regulatory role in adaptive immune response.



Western blot analysis of extracts of THP-1 cells, using SPN antibody at 1:1000 dilution.

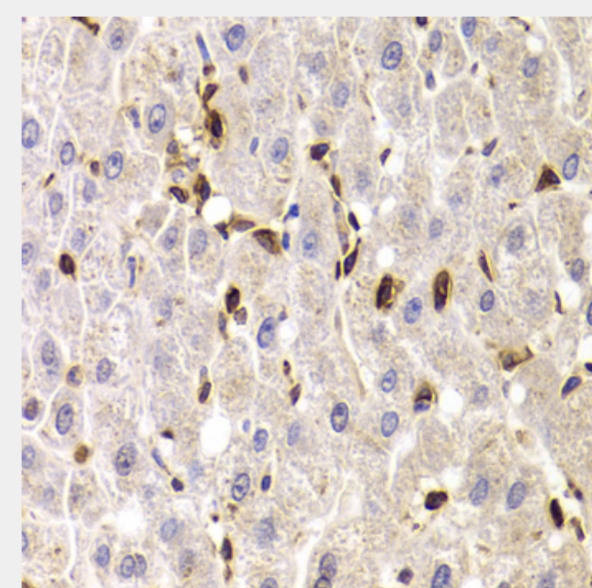
Secondary antibody: HRP Goat Anti-Rabbit IgG (H+L) at 1:10000 dilution.

Lysates/proteins: 25ug per lane.

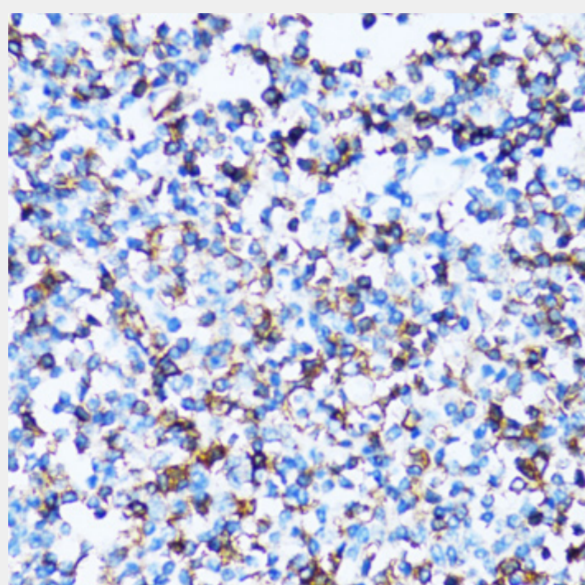
Blocking buffer: 3% nonfat dry milk in TBST.

Detection: ECL Basic Kit.

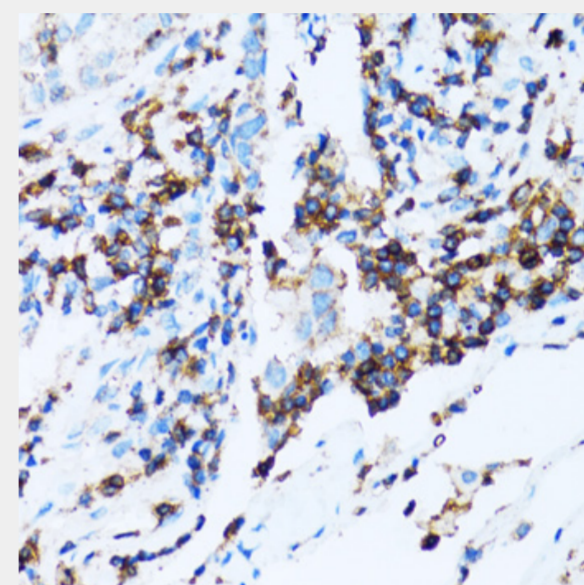
Exposure time: 60s.



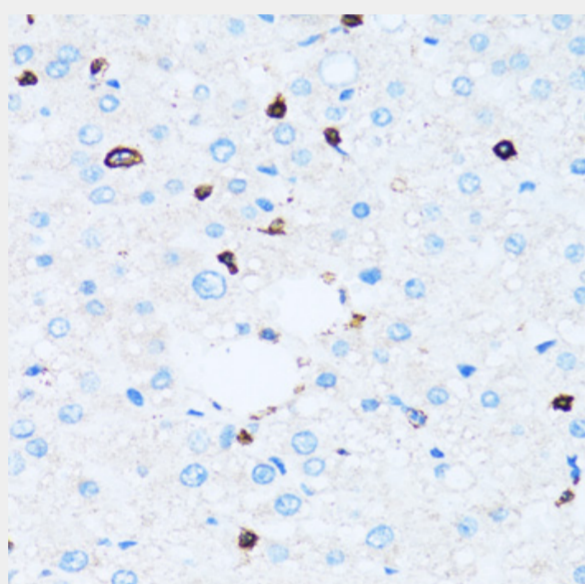
Immunohistochemistry of paraffin-embedded human liver injury using SPN antibody at dilution of 1:100 (40x lens).



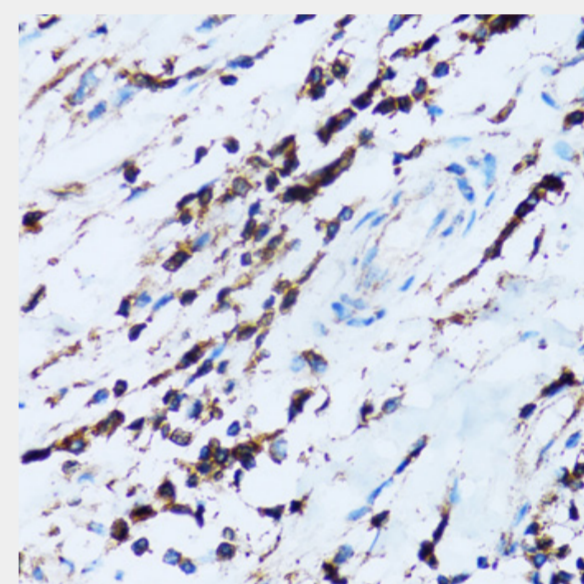
Immunohistochemistry of paraffin-embedded human tonsil using SPN antibody at dilution of 1:100 (40x lens).



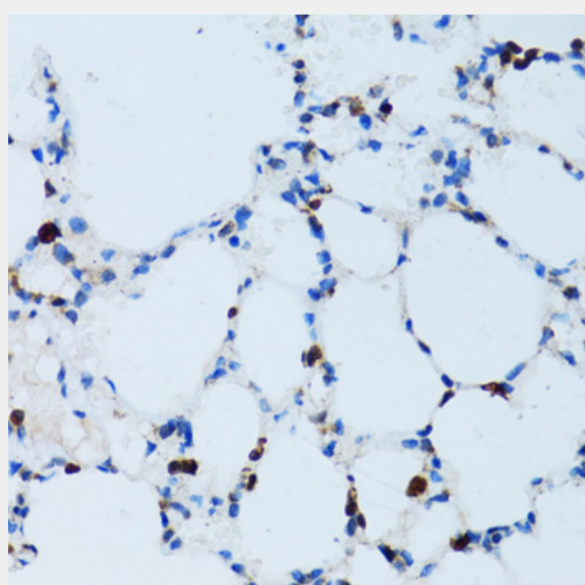
Immunohistochemistry of paraffin-embedded human lung cancer using SPN antibody at dilution of 1:100 (40x lens).



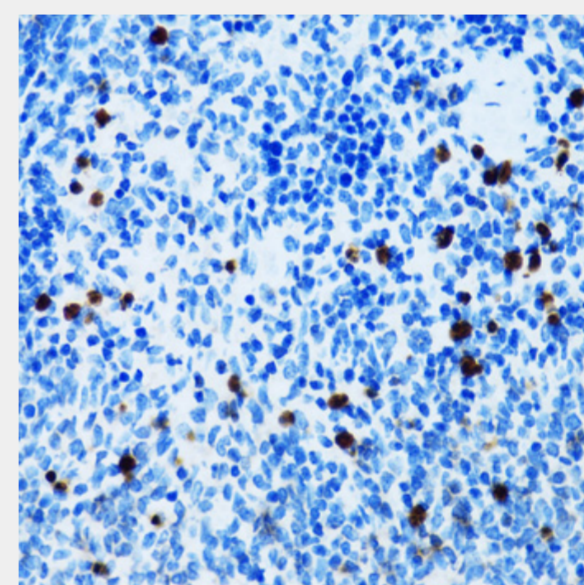
Immunohistochemistry of paraffin-embedded human liver using SPN antibody at dilution of 1:100 (40x lens).



Immunohistochemistry of paraffin-embedded human breast cancer using SPN antibody at dilution of 1:100 (40x lens).



Immunohistochemistry of paraffin-embedded mouse lung using SPN antibody at dilution of 1:100 (40x lens).



Immunohistochemistry of paraffin-embedded mouse spleen using SPN antibody at dilution of 1:100 (40x lens).

All products are for RESEARCH USE ONLY. Not for diagnostic & therapeutic purposes!