

SNRPA Polyclonal Antibody

Catalog No: tcba10146



Available Sizes

Size: 50ul

Size: 100ul

Size: 200ul



Specifications

Application:

WB,IHC,IF

Research Area:

,

Species Reactivity:

Human,Mouse,Rat

Host Species:

Rabbit

Isotype:

IgG

Form:

Liquid

Storage Buffer:

Buffer: PBS with 0.02% sodium azide, 50% glycerol, pH7.3.

Recommended Dilution:

WB 1:500 - 1:2000

IHC 1:50 - 1:200

IF 1:50 - 1:200

Storage Instruction:

Store at -20°C. Avoid freeze / thaw cycles.

Alternative Names:

Mud1;U1-A;U1A

SwissProt:

P09012

Gene ID:

6626 (human);

Calculated Molecular Weight:

31kDa

Purification:

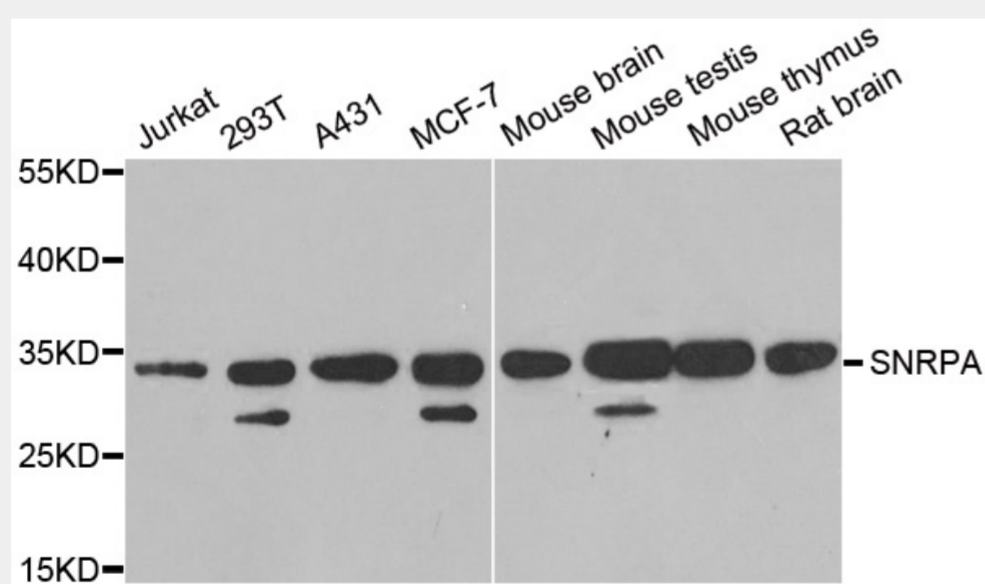
Affinity purification

Cellular Location:

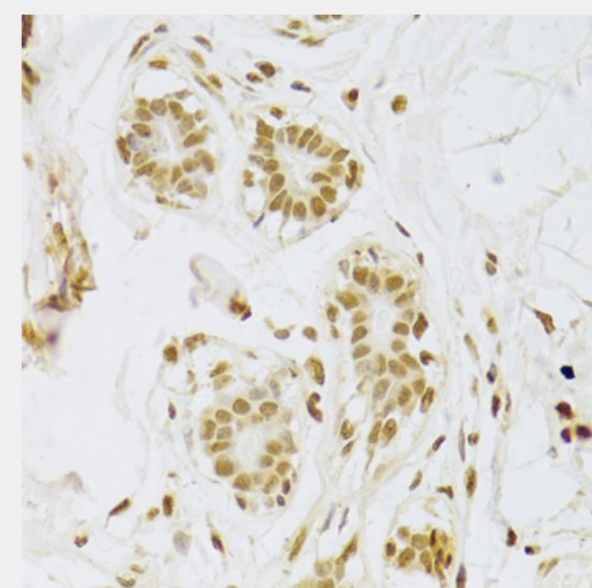
Nucleus,

Product Description

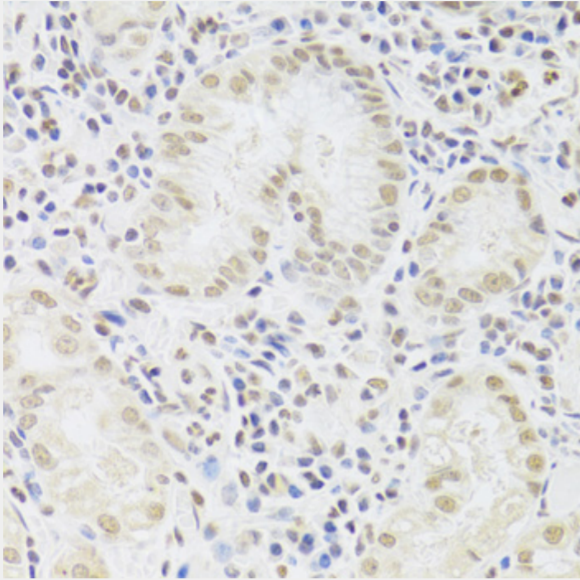
The protein encoded by this gene associates with stem loop II of the U1 small nuclear ribonucleoprotein, which binds the 5' splice site of precursor mRNAs and is required for splicing. The encoded protein autoregulates itself by polyadenylation inhibition of its own pre-mRNA via dimerization and has been implicated in the coupling of splicing and polyadenylation.



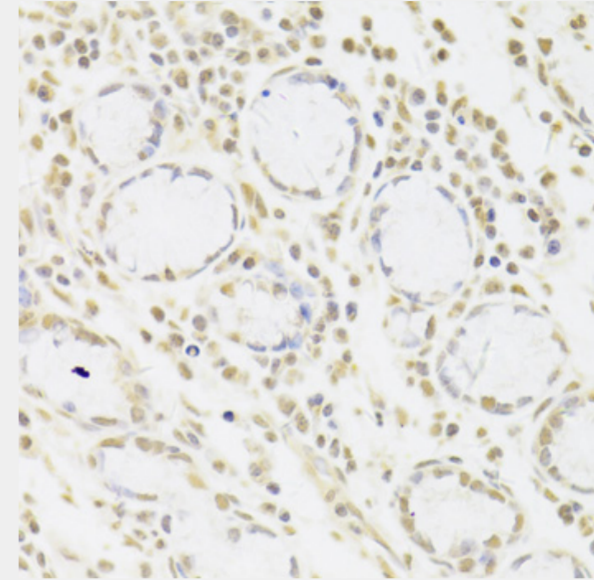
Western blot analysis of extracts of various cell lines, using SNRPA antibody at 1:1000 dilution.
Secondary antibody: HRP Goat Anti-Rabbit IgG (H+L) at 1:10000 dilution.
Lysates/proteins: 25ug per lane.
Blocking buffer: 3% nonfat dry milk in TBST.
Detection: ECL Basic Kit.
Exposure time: 90s.



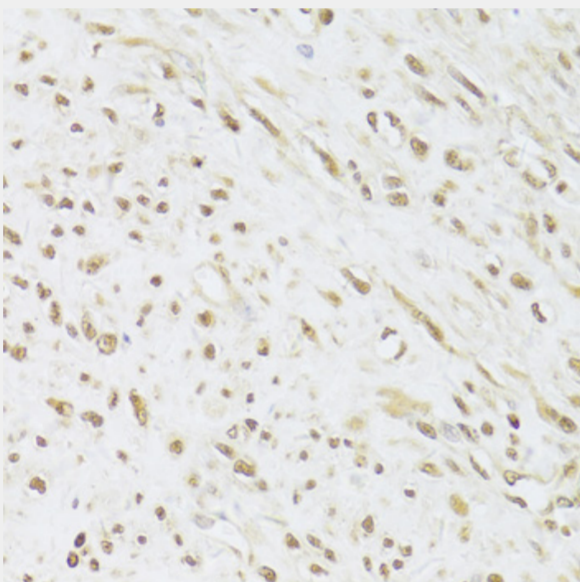
Immunohistochemistry of paraffin-embedded human breast using SNRPA Antibody at dilution of 1:100 (40x lens).



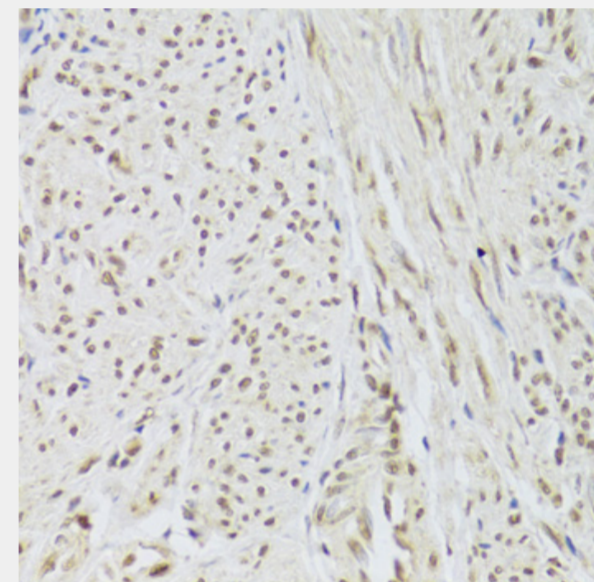
Immunohistochemistry of paraffin-embedded human stomach using SNRPA Antibody at dilution of 1:100 (40x lens).



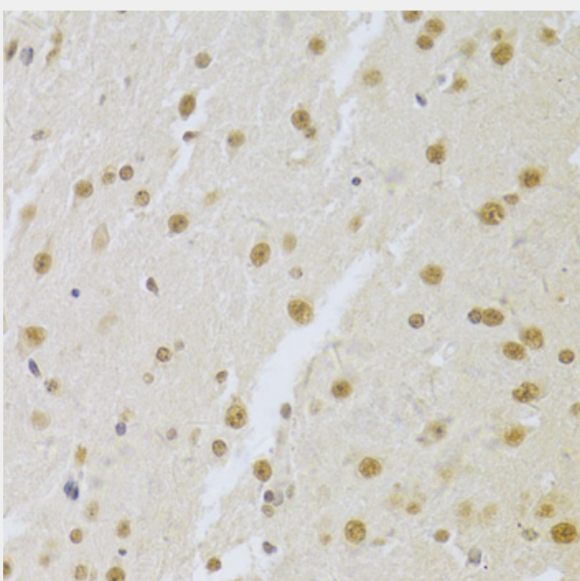
Immunohistochemistry of paraffin-embedded human gastric cancer using SNRPA Antibody at dilution of 1:100 (40x lens).



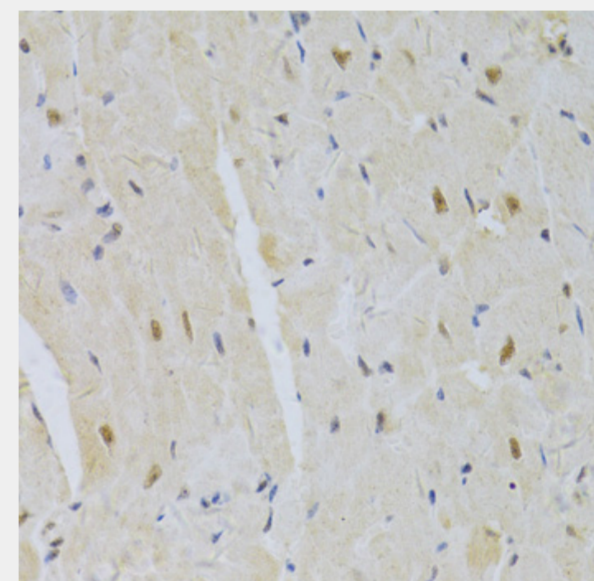
Immunohistochemistry of paraffin-embedded human leiomyoma of uterus using SNRPA Antibody at dilution of 1:100 (40x lens).



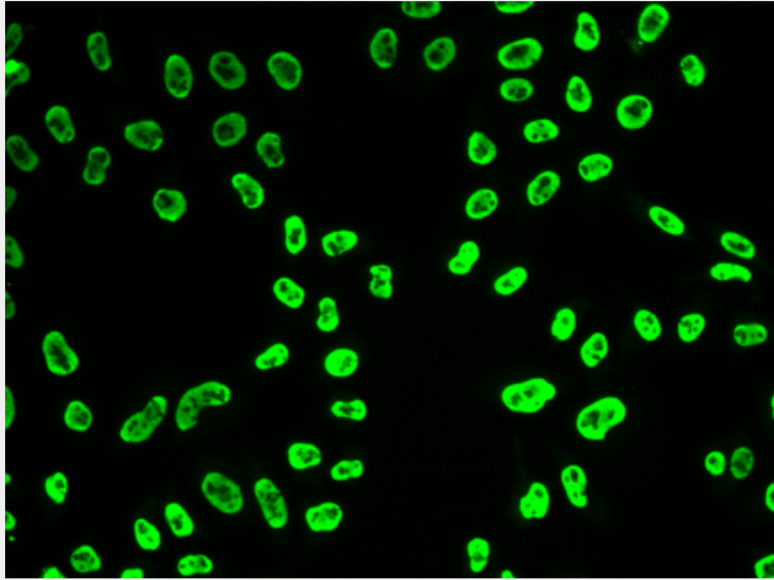
Immunohistochemistry of paraffin-embedded human adenomyosis using SNRPA Antibody at dilution of 1:100 (40x lens).



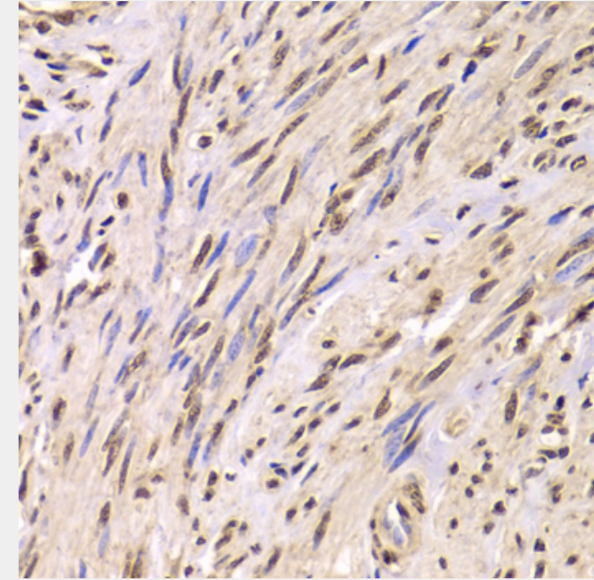
Immunohistochemistry of paraffin-embedded mouse brain using SNRPA Antibody at dilution of 1:100 (40x lens).



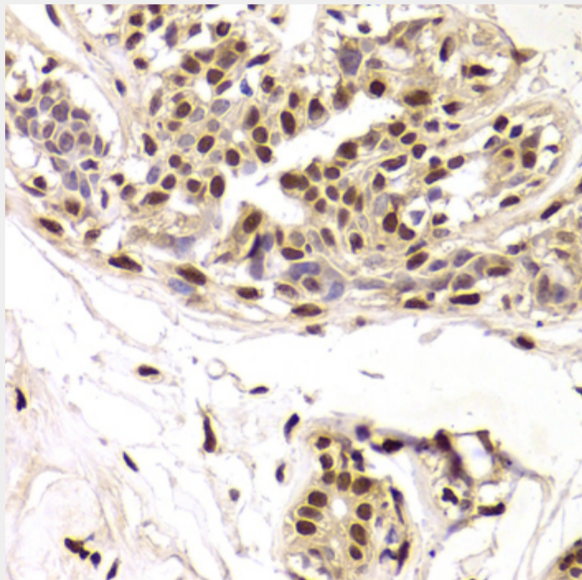
Immunohistochemistry of paraffin-embedded mouse heart using SNRPA Antibody at dilution of 1:100 (40x lens).



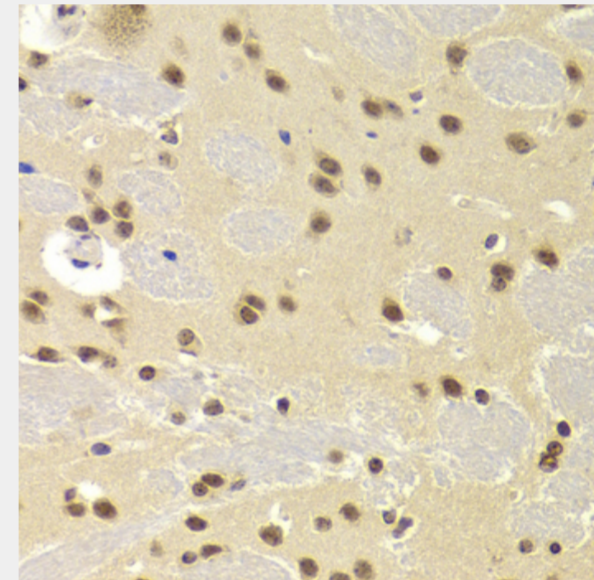
Immunofluorescence analysis of HeLa cells using SNRPA antibody.



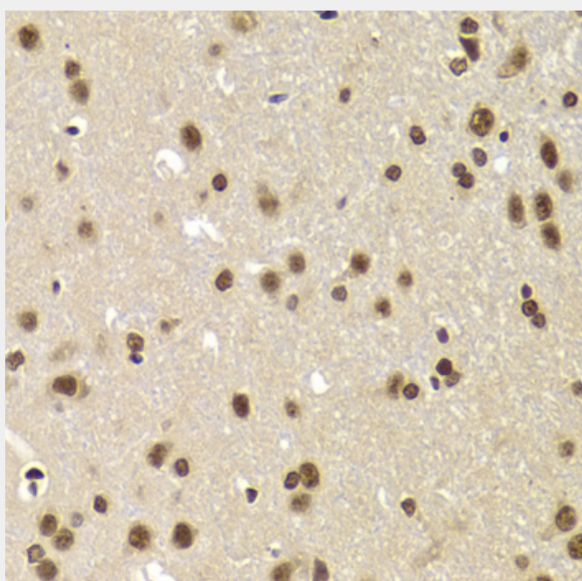
Immunohistochemistry of paraffin-embedded human adenomyosis using SNRPA Antibody at dilution of 1:100 (40x lens).



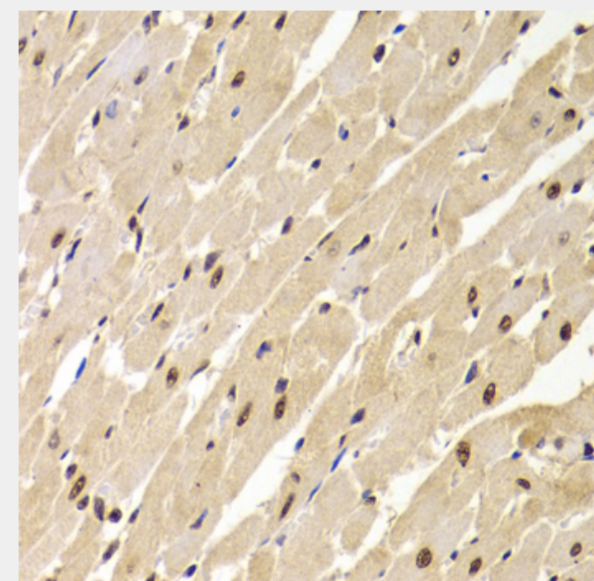
Immunohistochemistry of paraffin-embedded human breast using SNRPA Antibody at dilution of 1:100 (40x lens).



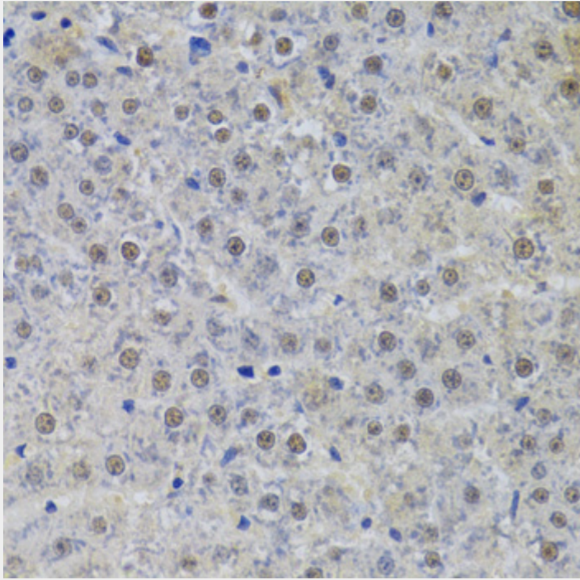
Immunohistochemistry of paraffin-embedded mouse brain using SNRPA Antibody at dilution of 1:100 (40x lens).



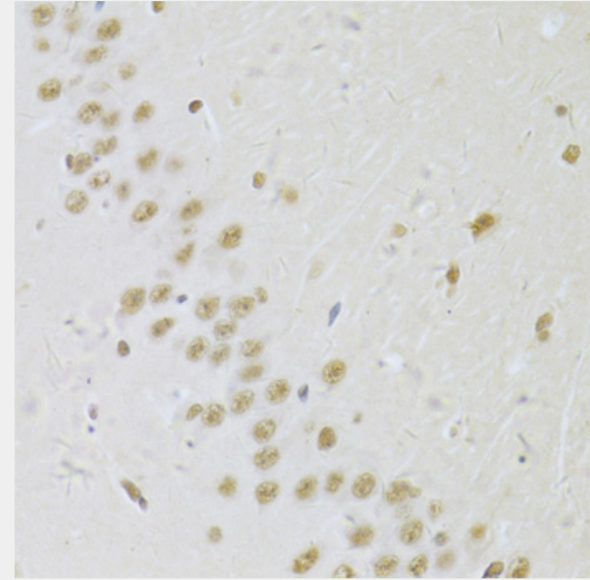
Immunohistochemistry of paraffin-embedded rat brain using SNRPA Antibody at dilution of 1:100 (40x lens).



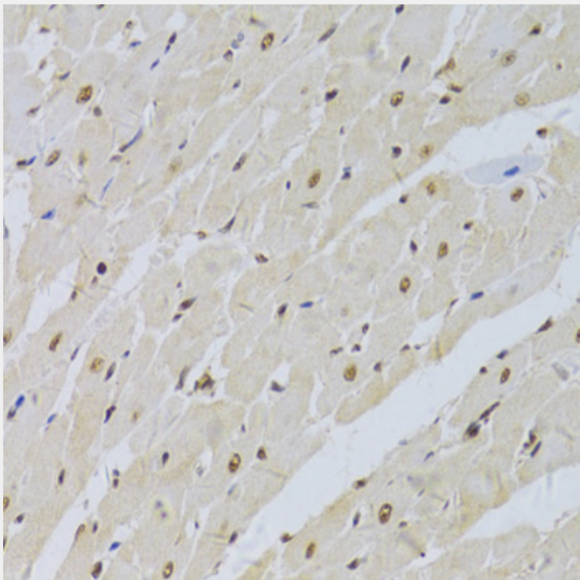
Immunohistochemistry of paraffin-embedded rat heart using SNRPA Antibody at dilution of 1:100 (40x lens).



Immunohistochemistry of paraffin-embedded rat liver using SNRPA Antibody at dilution of 1:100 (40x lens).



Immunohistochemistry of paraffin-embedded rat brain using SNRPA Antibody at dilution of 1:100 (40x lens).



Immunohistochemistry of paraffin-embedded rat heart using SNRPA Antibody at dilution of 1:100 (40x lens).

All products are for RESEARCH USE ONLY. Not for diagnostic & therapeutic purposes!