

# RCC1 Polyclonal Antibody

Catalog No: tcba10087



## Available Sizes

Size: 50ul

Size: 100ul

Size: 200ul



## Specifications

### Application:

WB,IHC

### Research Area:

Cancer,Cell cycle,Cell Biology,

### Species Reactivity:

Human,Mouse,Rat

### Host Species:

Rabbit

### Isotype:

IgG

### Form:

Liquid

### Storage Buffer:

Buffer: PBS with 0.02% sodium azide, 50% glycerol, pH7.3.

### Recommended Dilution:

WB 1:1000 - 1:2000

IHC 1:50 - 1:200

### Storage Instruction:

Store at -20°C. Avoid freeze / thaw cycles.

**Alternative Names:**

CHC1;RCC1-I;SNHG3-RCC1

**SwissProt:**

P18754

**Gene ID:**

1104 (human);

**Calculated Molecular Weight:**

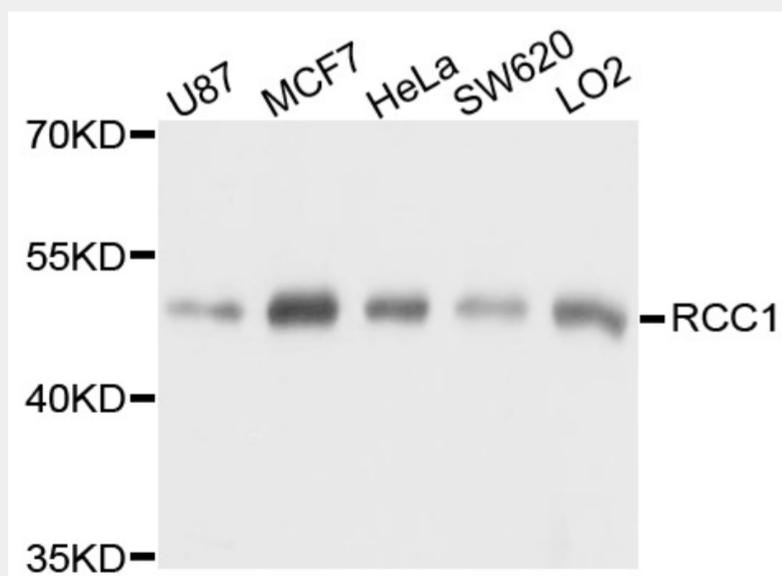
44kDa/48kDa

**Purification:**

Affinity purification

**Cellular Location:**

Cytoplasm,Nucleus,



Western blot analysis of extracts of various cell lines, using RCC1 antibody at 1:1000 dilution.

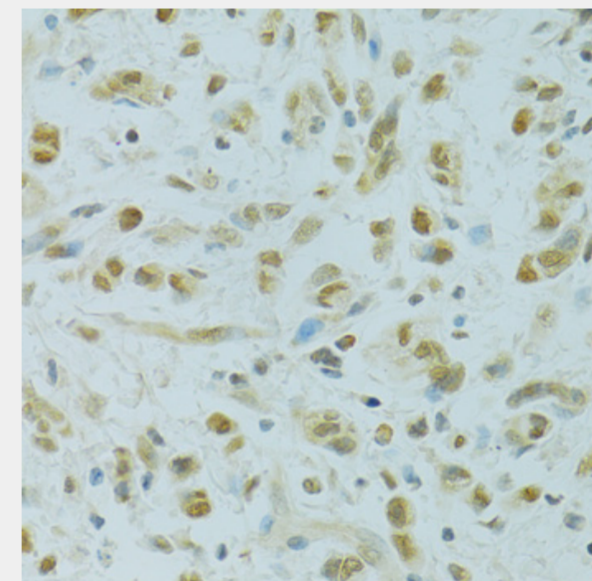
Secondary antibody: HRP Goat Anti-Rabbit IgG (H+L) at 1:10000 dilution.

Lysates/proteins: 25ug per lane.

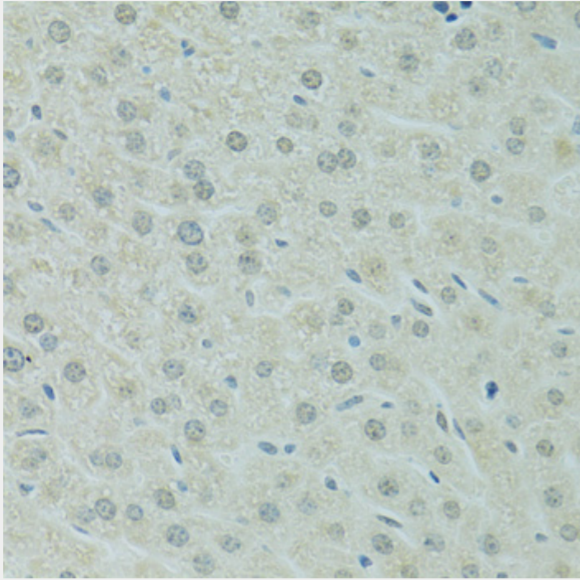
Blocking buffer: 3% nonfat dry milk in TBST.

Detection: ECL Basic Kit.

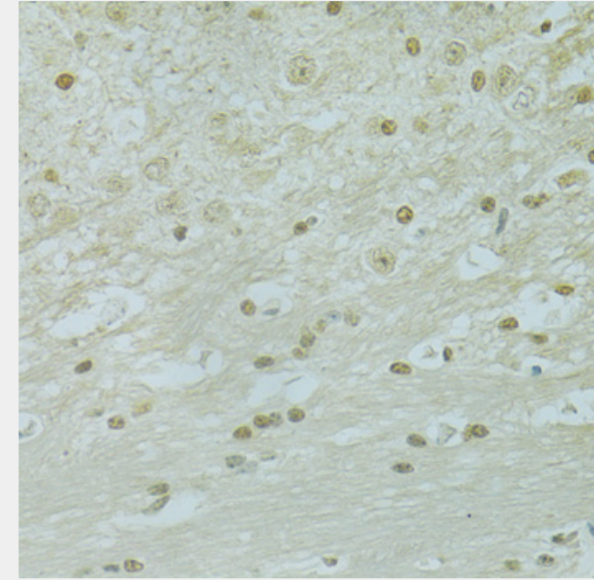
Exposure time: 5s.



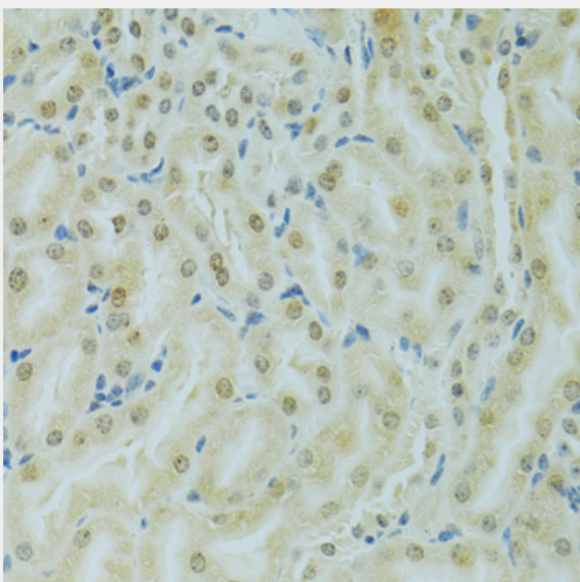
Immunohistochemistry of paraffin-embedded human gastric cancer using RCC1 antibody at dilution of 1:100 (40x lens).



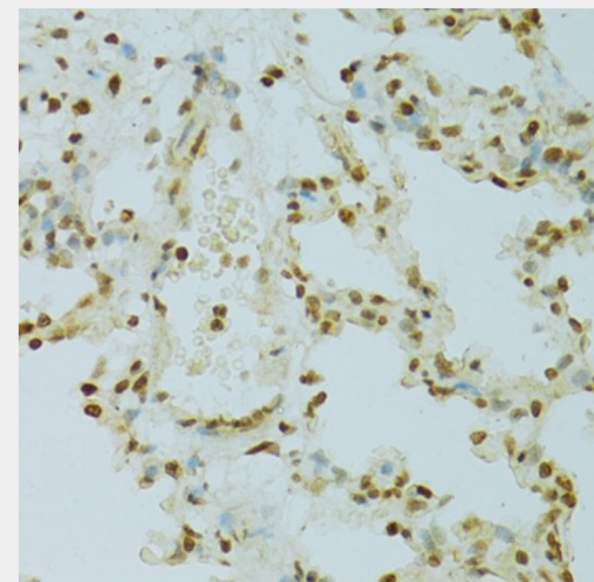
Immunohistochemistry of paraffin-embedded mouse liver using RCC1 antibody at dilution of 1:100 (40x lens).



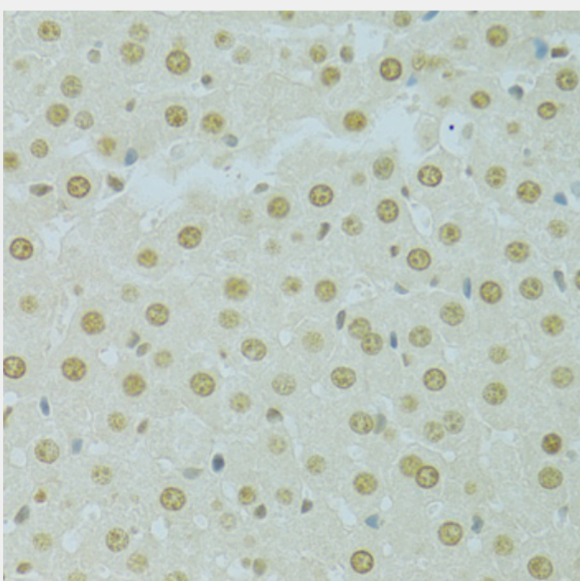
Immunohistochemistry of paraffin-embedded mouse brain using RCC1 antibody at dilution of 1:100 (40x lens).



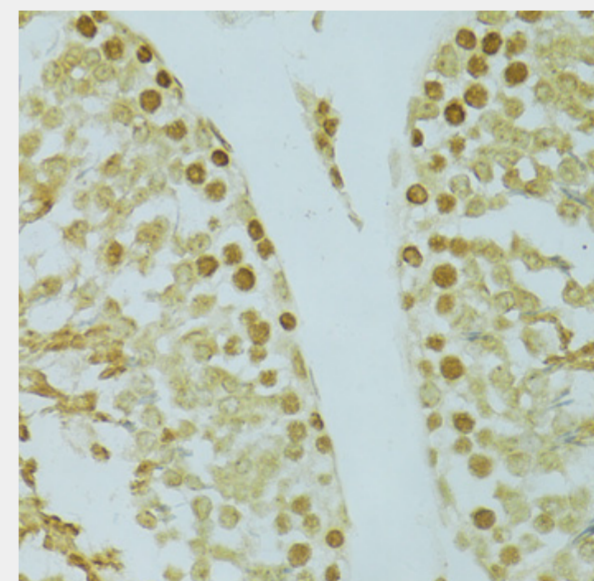
Immunohistochemistry of paraffin-embedded mouse kidney using RCC1 antibody at dilution of 1:100 (40x lens).



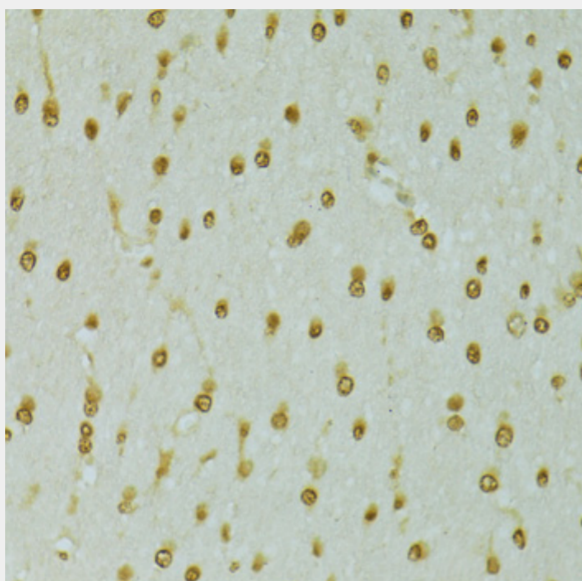
Immunohistochemistry of paraffin-embedded rat lung using RCC1 antibody at dilution of 1:100 (40x lens).



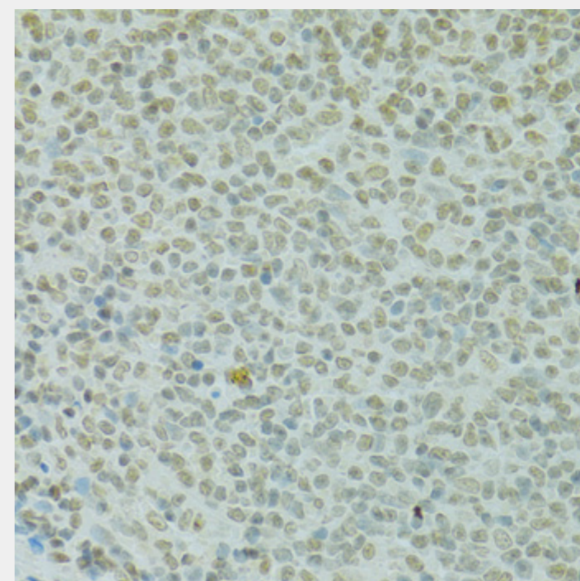
Immunohistochemistry of paraffin-embedded rat liver using RCC1 antibody at dilution of 1:100 (40x lens).



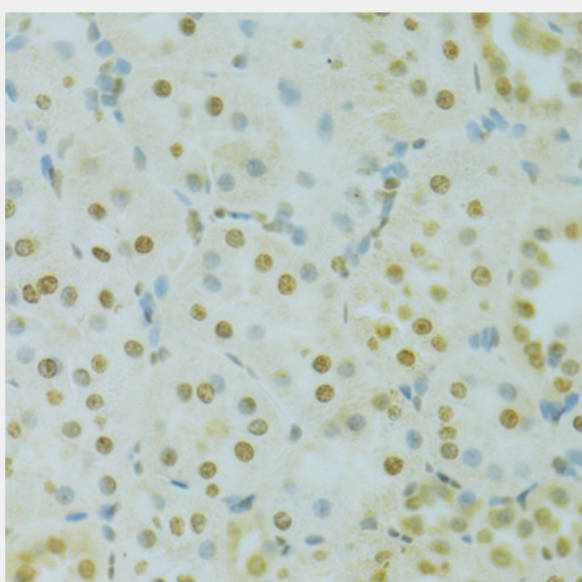
Immunohistochemistry of paraffin-embedded rat testis using RCC1 antibody at dilution of 1:100 (40x lens).



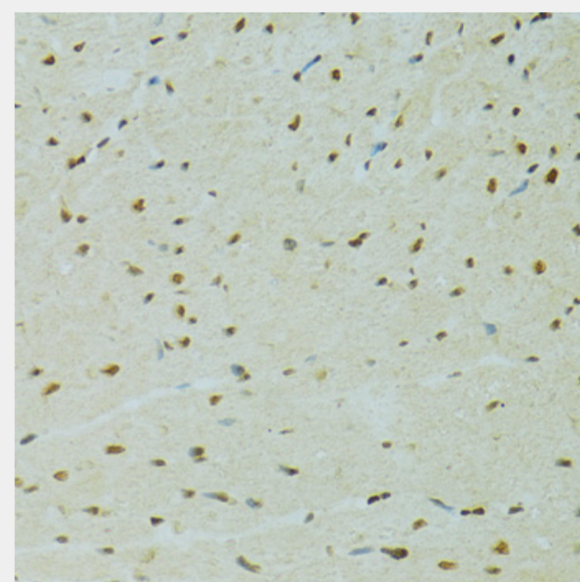
Immunohistochemistry of paraffin-embedded rat brain using RCC1 antibody at dilution of 1:100 (40x lens).



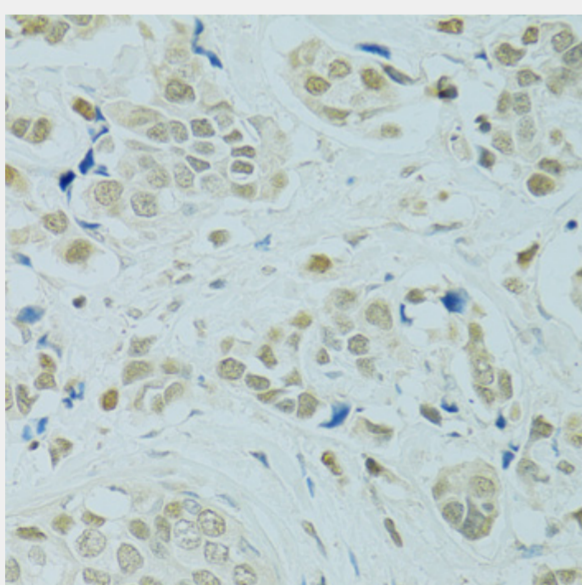
Immunohistochemistry of paraffin-embedded rat spleen using RCC1 antibody at dilution of 1:100 (40x lens).



Immunohistochemistry of paraffin-embedded rat kidney using RCC1 antibody at dilution of 1:100 (40x lens).



Immunohistochemistry of paraffin-embedded rat heart using RCC1 antibody at dilution of 1:100 (40x lens).



Immunohistochemistry of paraffin-embedded human breast cancer using RCC1 antibody at dilution of 1:100 (40x lens).

All products are for RESEARCH USE ONLY. Not for diagnostic & therapeutic purposes!