

# BCAP29 Polyclonal Antibody

Catalog No: tcba10073



## Available Sizes

---

**Size:** 50ul

**Size:** 100ul

**Size:** 200ul



## Specifications

---

**Application:**

WB,IHC,IF

**Research Area:**

Cancer,Apoptosis,AKT pathway,Immunology,PI3K-Akt pathway,

**Species Reactivity:**

Human,Mouse,Rat

**Host Species:**

Rabbit

**Isotype:**

IgG

**Form:**

Liquid

**Storage Buffer:**

Buffer: PBS with 0.02% sodium azide, 50% glycerol, pH7.3.

**Recommended Dilution:**

WB 1:500 - 1:2000

IHC 1:50 - 1:200

IF 1:50 - 1:200

**Storage Instruction:**

Store at -20°C. Avoid freeze / thaw cycles.

**SwissProt:**

Q9UHQ4

**Gene ID:**

55973 (human);

**Calculated Molecular Weight:**

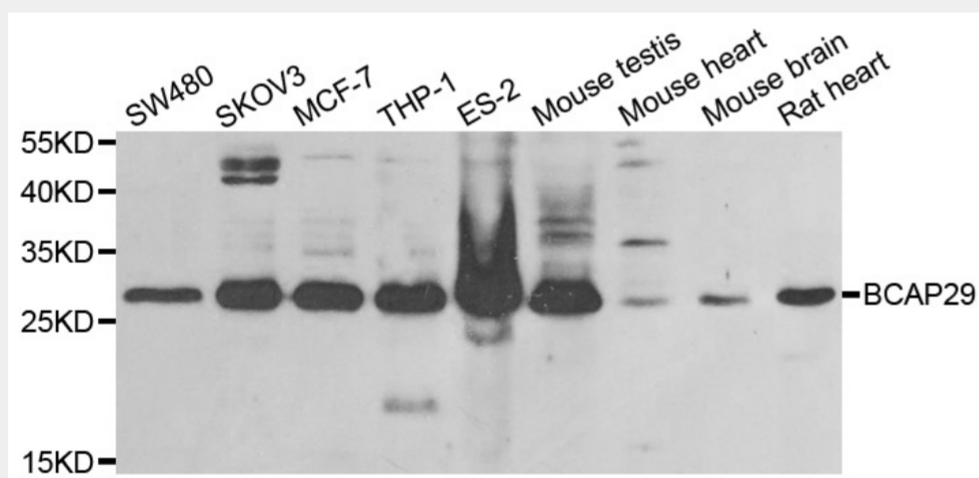
28kDa/40kDa

**Purification:**

Affinity purification

**Cellular Location:**

Endoplasmic reticulum membrane, Multi-pass membrane protein,



Western blot analysis of extracts of various cell lines, using BCAP29 antibody at 1:1000 dilution.

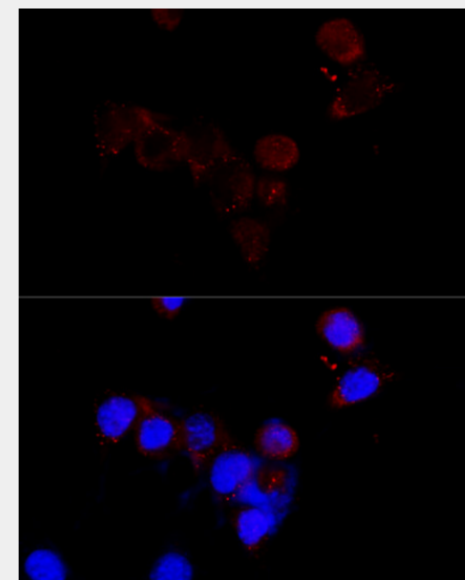
Secondary antibody: HRP Goat Anti-Rabbit IgG (H+L) at 1:10000 dilution.

Lysates/proteins: 25ug per lane.

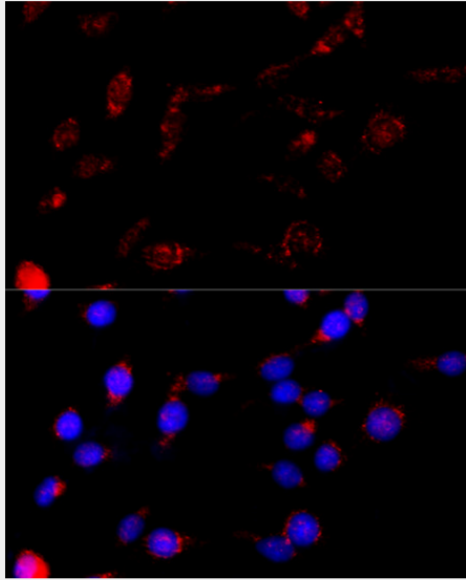
Blocking buffer: 3% nonfat dry milk in TBST.

Detection: ECL Enhanced Kit.

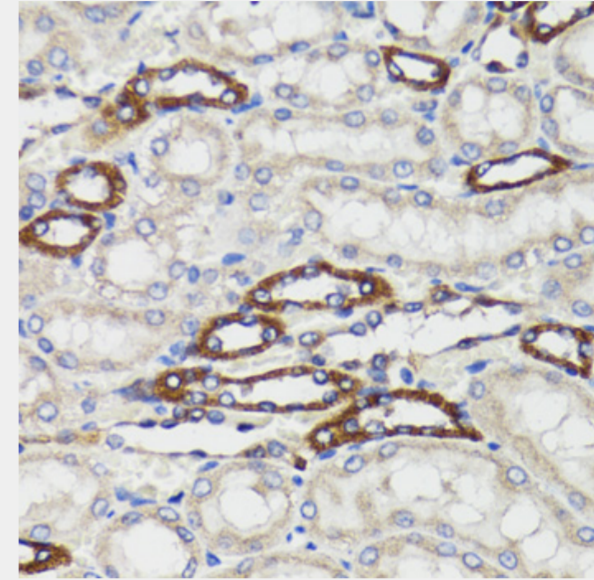
Exposure time: 30s.



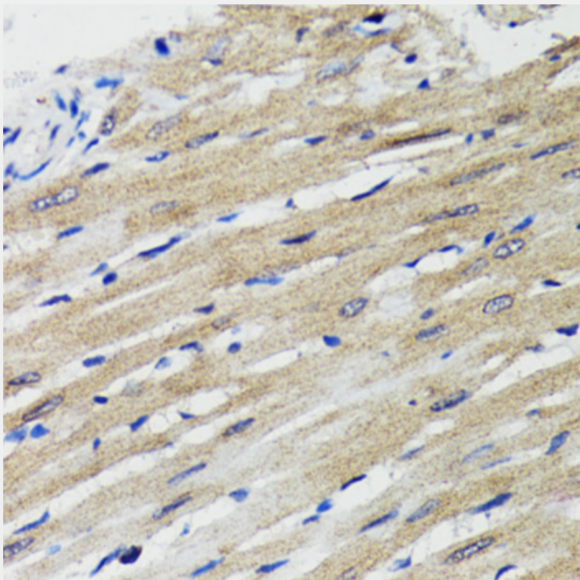
Immunofluorescence analysis of NIH/3T3 cells using BCAP29 antibody at dilution of 1:100 (40x lens). Blue: DAPI for nuclear staining.



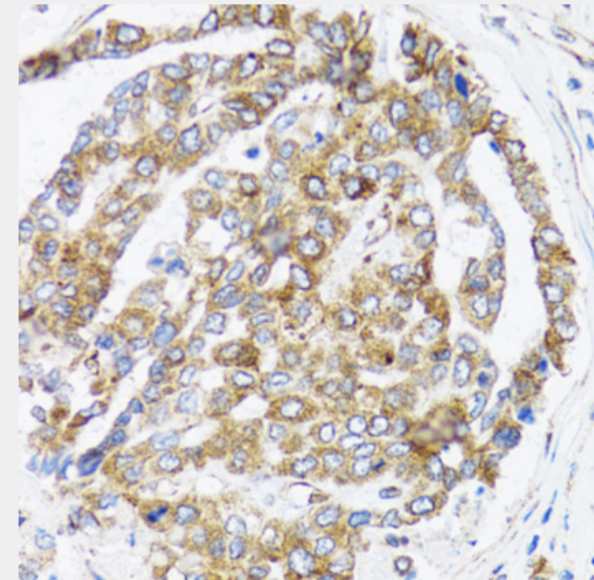
Immunofluorescence analysis of PC-12 cells using BCAP29 antibody at dilution of 1:100 (40x lens). Blue: DAPI for nuclear staining.



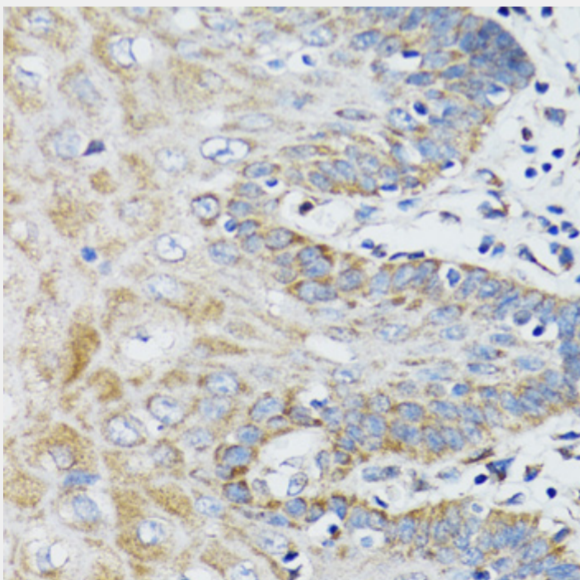
Immunohistochemistry of paraffin-embedded rat kidney using BCAP29 antibody at dilution of 1:100 (40x lens).



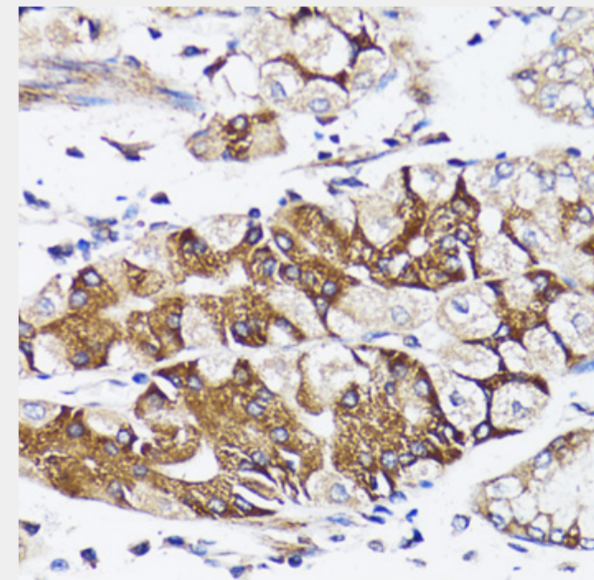
Immunohistochemistry of paraffin-embedded rat heart using BCAP29 antibody at dilution of 1:100 (40x lens).



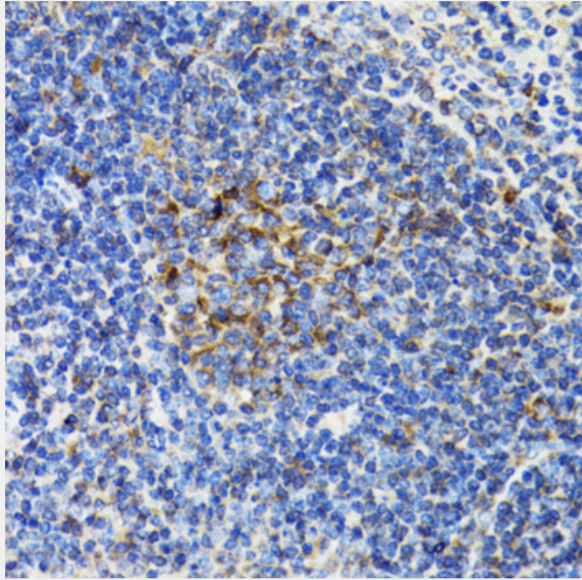
Immunohistochemistry of paraffin-embedded human liver cancer using BCAP29 antibody at dilution of 1:100 (40x lens).



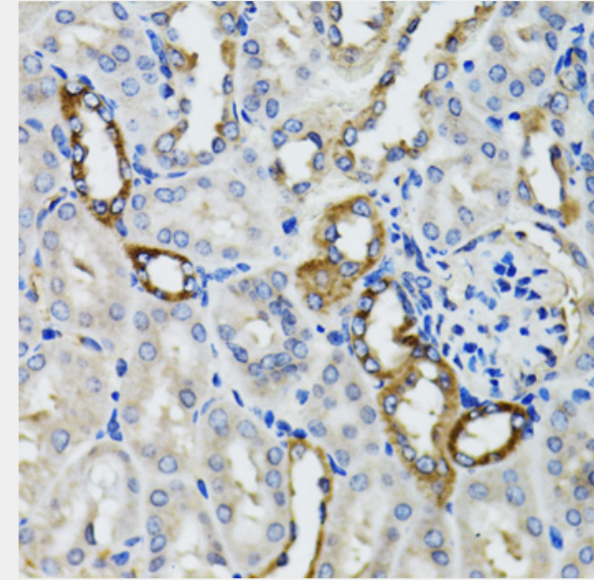
Immunohistochemistry of paraffin-embedded human prostate using BCAP29 antibody at dilution of 1:100 (40x lens).



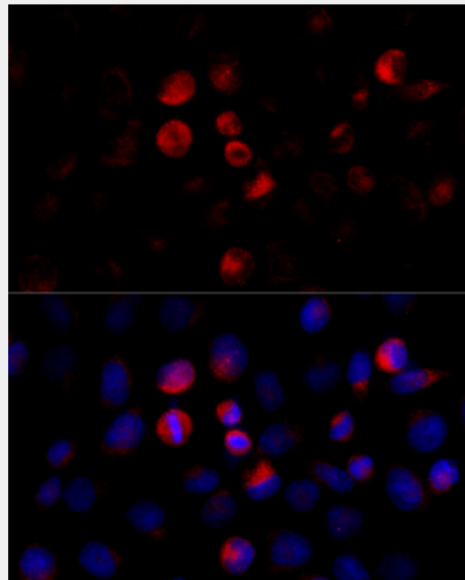
Immunohistochemistry of paraffin-embedded human stomach using BCAP29 antibody at dilution of 1:100 (40x lens).



Immunohistochemistry of paraffin-embedded mouse spleen using BCAP29 antibody at dilution of 1:100 (40x lens).



Immunohistochemistry of paraffin-embedded mouse kidney using BCAP29 antibody at dilution of 1:100 (40x lens).



Immunofluorescence analysis of HeLa cells using BCAP29 antibody at dilution of 1:100 (40x lens). Blue: DAPI for nuclear staining.

All products are for RESEARCH USE ONLY. Not for diagnostic & therapeutic purposes!