

SF3B3 Polyclonal Antibody

Catalog No: tcba9910



Available Sizes

Size: 50ul

Size: 100ul

Size: 200ul



Specifications

Application:

WB,IHC

Research Area:

,Epigenetics,

Species Reactivity:

Human,Mouse,Rat

Host Species:

Rabbit

Isotype:

IgG

Form:

Liquid

Storage Buffer:

Buffer: PBS with 0.02% sodium azide, 50% glycerol, pH7.3.

Recommended Dilution:

WB 1:500 - 1:2000

IHC 1:50 - 1:200

Storage Instruction:

Store at -20°C. Avoid freeze / thaw cycles.

Alternative Names:

RSE1;SAP130;SF3b130;STAF130

SwissProt:

Q15393

Gene ID:

23450 (human);

Calculated Molecular Weight:

30kDa/44kDa/135kDa

Purification:

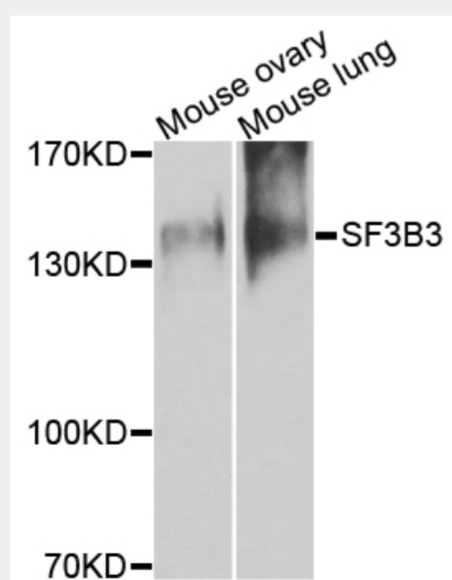
Affinity purification

Cellular Location:

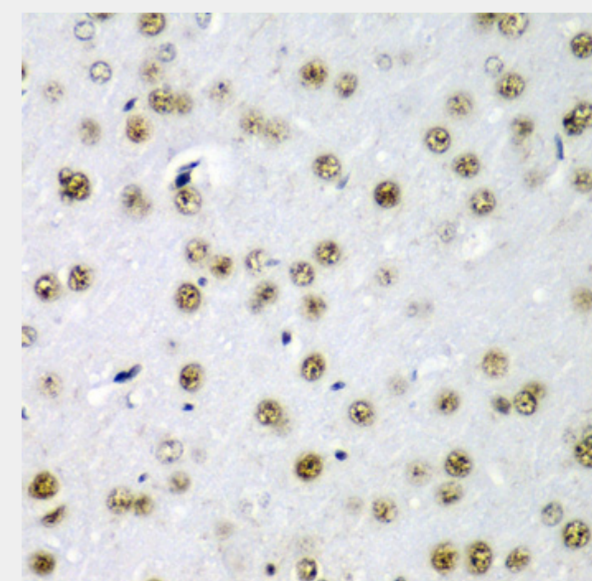
Nucleus,

Product Description

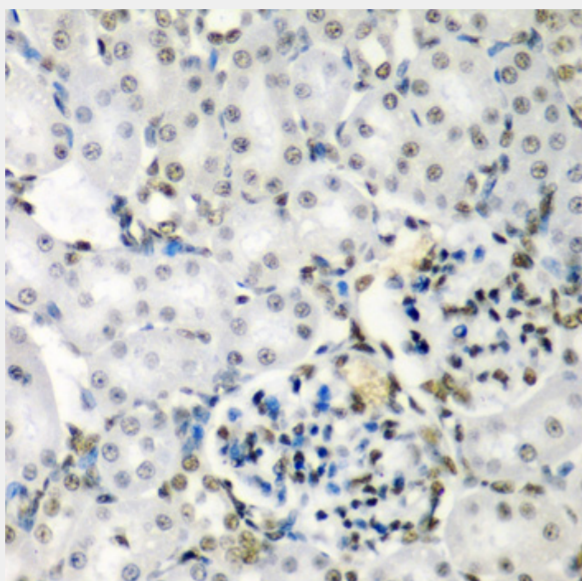
This gene encodes subunit 3 of the splicing factor 3b protein complex. Splicing factor 3b, together with splicing factor 3a and a 12S RNA unit, forms the U2 small nuclear ribonucleoproteins complex (U2 snRNP). The splicing factor 3b/3a complex binds pre-mRNA upstream of the intron's branch site in a sequence independent manner and may anchor the U2 snRNP to the pre-mRNA. Splicing factor 3b is also a component of the minor U12-type spliceosome. Subunit 3 has also been identified as a component of the STAGA (SPT3-TAF(II)31-GCN5L acetylase) transcription coactivator-HAT (histone acetyltransferase) complex, and the TFTC (TATA-binding-protein-free TAF(II)-containing complex). These complexes may function in chromatin modification, transcription, splicing, and DNA repair.



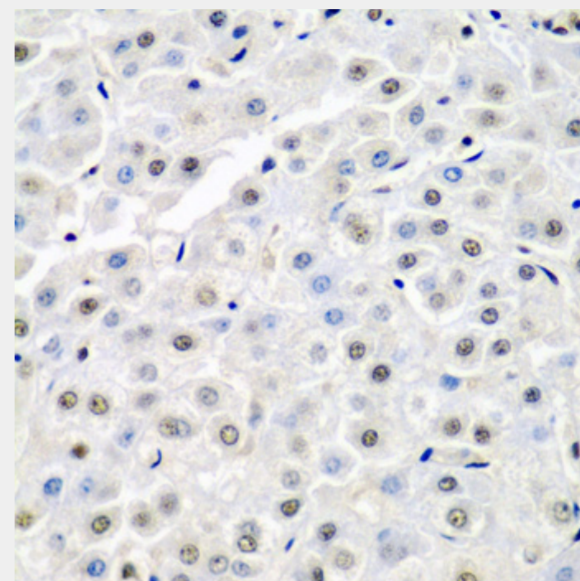
Western blot analysis of extracts of various cell lines, using SF3B3 antibody at 1:1000 dilution.
Secondary antibody: HRP Goat Anti-Rabbit IgG (H+L) at 1:10000 dilution.
Lysates/proteins: 25ug per lane.
Blocking buffer: 3% nonfat dry milk in TBST.



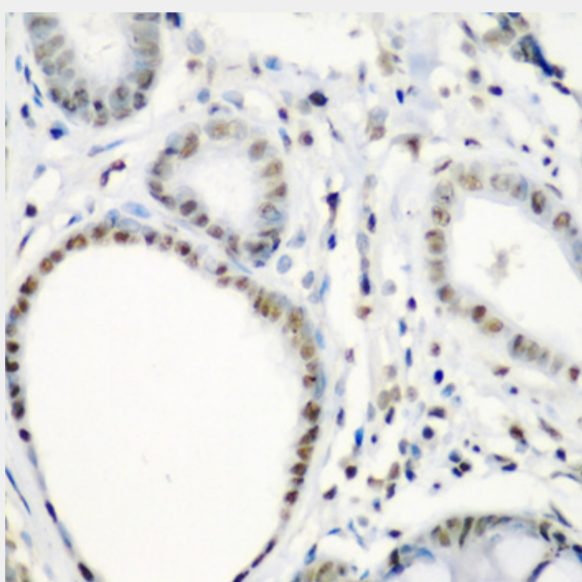
Immunohistochemistry of paraffin-embedded rat brain using SF3B3 antibody at dilution of 1:200 (40x lens).



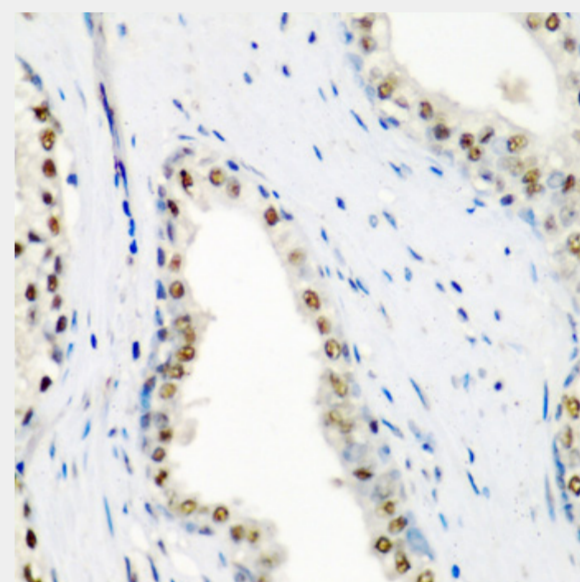
Immunohistochemistry of paraffin-embedded rat kidney using SF3B3 antibody at dilution of 1:200 (40x lens).



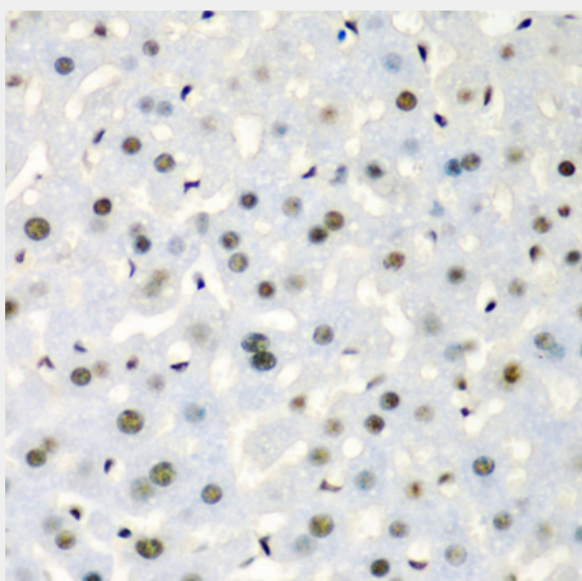
Immunohistochemistry of paraffin-embedded human liver cancer using SF3B3 antibody at dilution of 1:200 (40x lens).



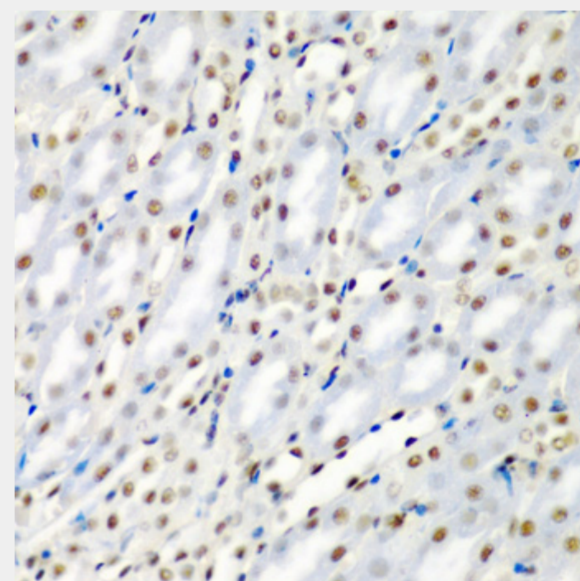
Immunohistochemistry of paraffin-embedded human colon carcinoma using SF3B3 antibody at dilution of 1:200 (40x lens).



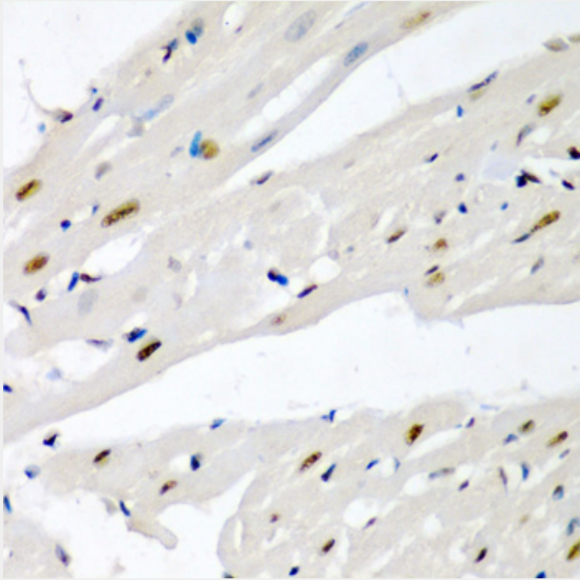
Immunohistochemistry of paraffin-embedded human prostate using SF3B3 antibody at dilution of 1:200 (40x lens).



Immunohistochemistry of paraffin-embedded mouse liver using SF3B3 antibody at dilution of 1:200 (40x lens).



Immunohistochemistry of paraffin-embedded mouse kidney using SF3B3 antibody at dilution of 1:200 (40x lens).



Immunohistochemistry of paraffin-embedded mouse heart using SF3B3 antibody at dilution of 1:200 (40x lens).

All products are for RESEARCH USE ONLY. Not for diagnostic & therapeutic purposes!