

ALYREF Polyclonal Antibody

Catalog No: tcba9841



Available Sizes

Size: 50ul

Size: 100ul

Size: 200ul



Specifications

Application:

WB,IHC

Research Area:

RNA Binding Protein(RBP),

Species Reactivity:

Human,Mouse,Rat

Host Species:

Rabbit

Isotype:

IgG

Form:

Liquid

Storage Buffer:

Buffer: PBS with 0.02% sodium azide, 50% glycerol, pH7.3.

Recommended Dilution:

WB 1:500 - 1:2000

IHC 1:50 - 1:200

Storage Instruction:

Store at -20°C. Avoid freeze / thaw cycles.

Alternative Names:

ALY;ALY/REF;BEF;REF;THOC4

SwissProt:

Q86V81

Gene ID:

10189 (human);

Calculated Molecular Weight:

26kDa

Purification:

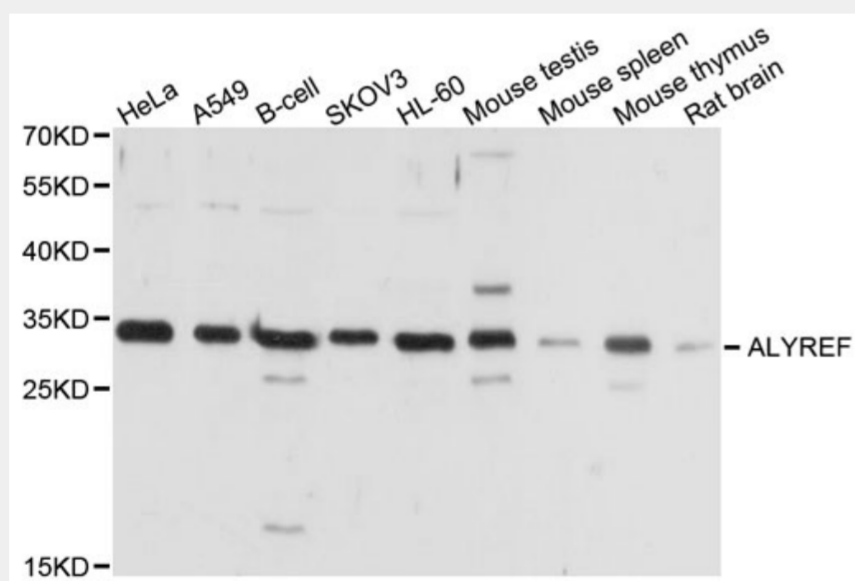
Affinity purification

Cellular Location:

Cytoplasm,Nucleus,Nucleus speckle,

Product Description

The protein encoded by this gene is a heat stable, nuclear protein and functions as a molecular chaperone. It is thought to regulate dimerization, DNA binding, and transcriptional activity of basic region-leucine zipper (bZIP) proteins.



Western blot analysis of extracts of various cell lines, using ALYREF antibody at 1:1000 dilution.

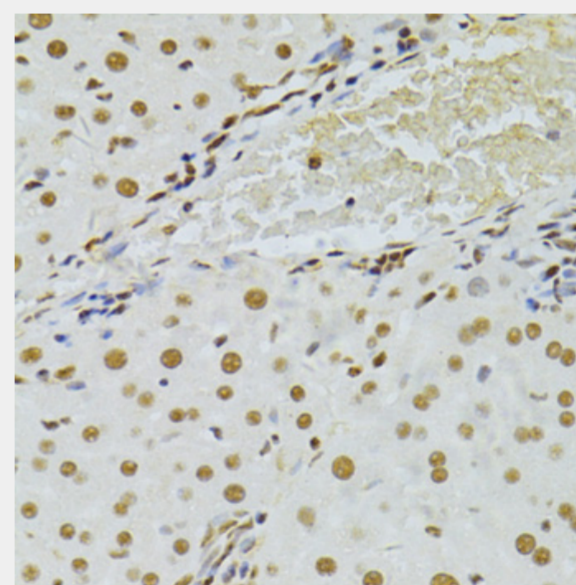
Secondary antibody: HRP Goat Anti-Rabbit IgG (H+L) at 1:10000 dilution.

Lysates/proteins: 25ug per lane.

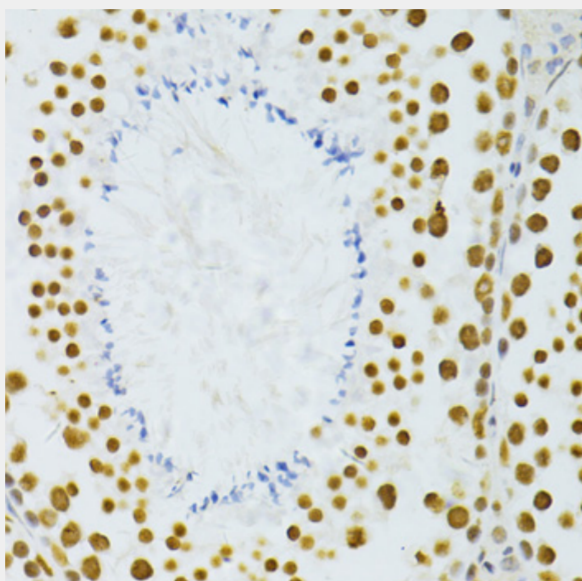
Blocking buffer: 3% nonfat dry milk in TBST.

Detection: ECL Basic Kit.

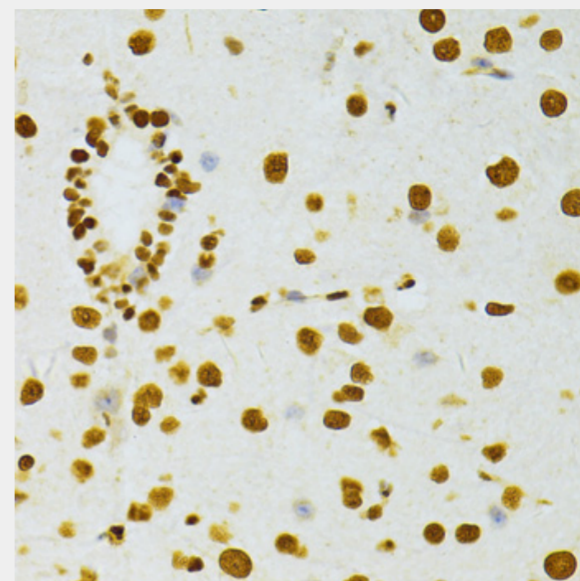
Exposure time: 5s.



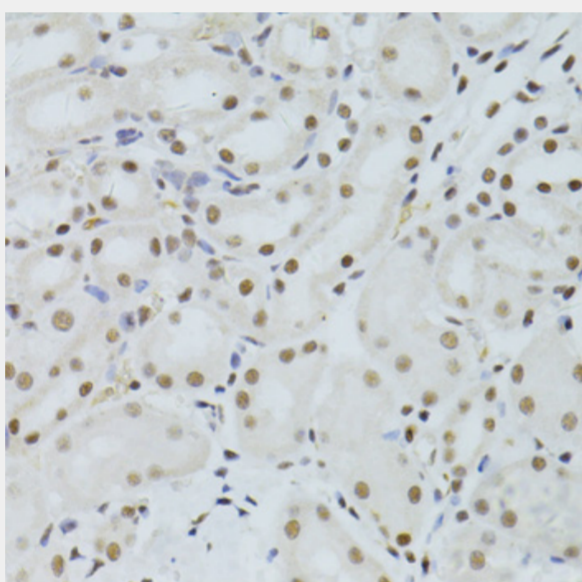
Immunohistochemistry of paraffin-embedded mouse liver using ALYREF antibody at dilution of 1:100 (40x lens).



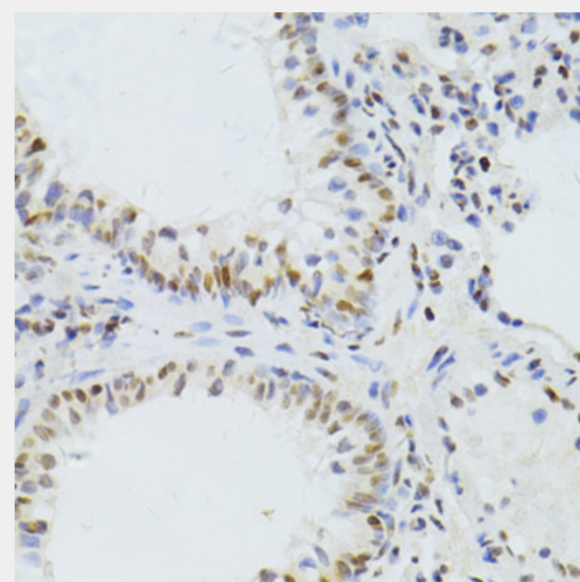
Immunohistochemistry of paraffin-embedded mouse testis using ALYREF antibody at dilution of 1:100 (40x lens).



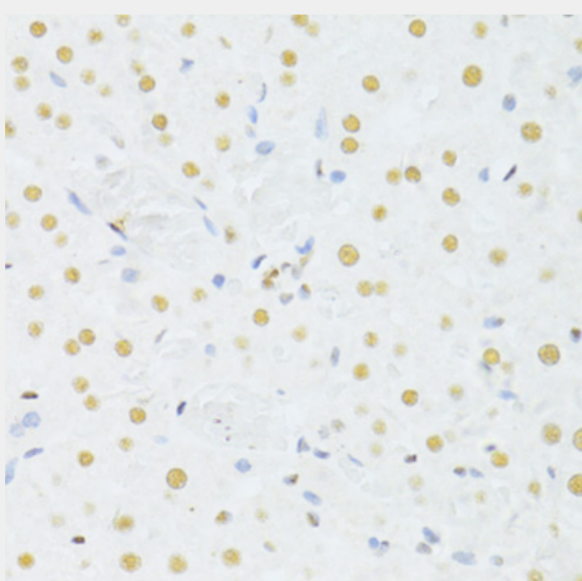
Immunohistochemistry of paraffin-embedded mouse spinal cord using ALYREF antibody at dilution of 1:100 (40x lens).



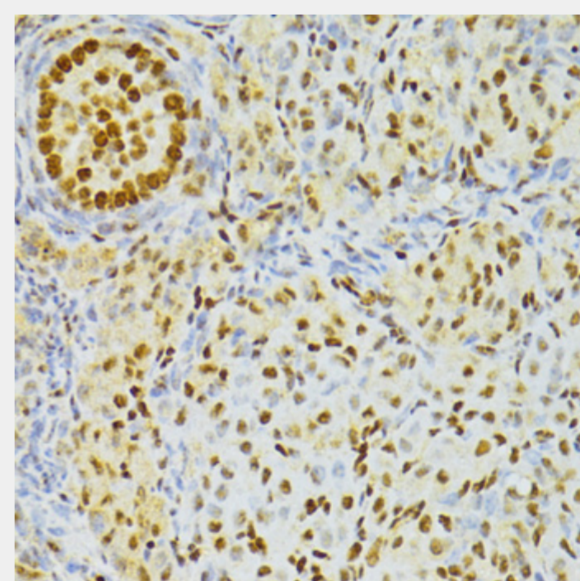
Immunohistochemistry of paraffin-embedded mouse kidney using ALYREF antibody at dilution of 1:100 (40x lens).



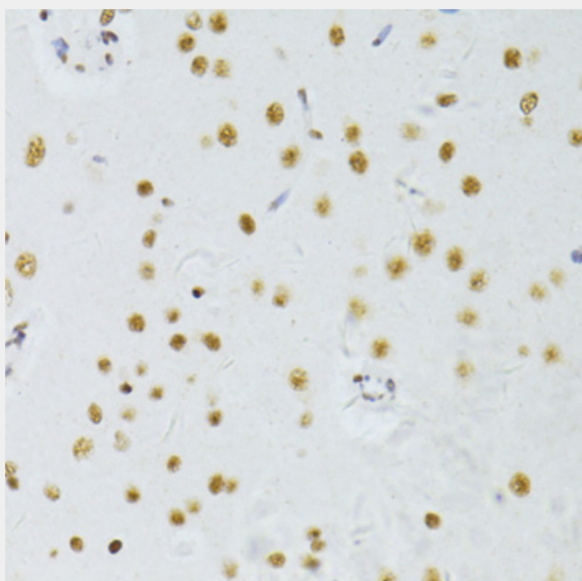
Immunohistochemistry of paraffin-embedded rat lung using ALYREF antibody at dilution of 1:100 (40x lens).



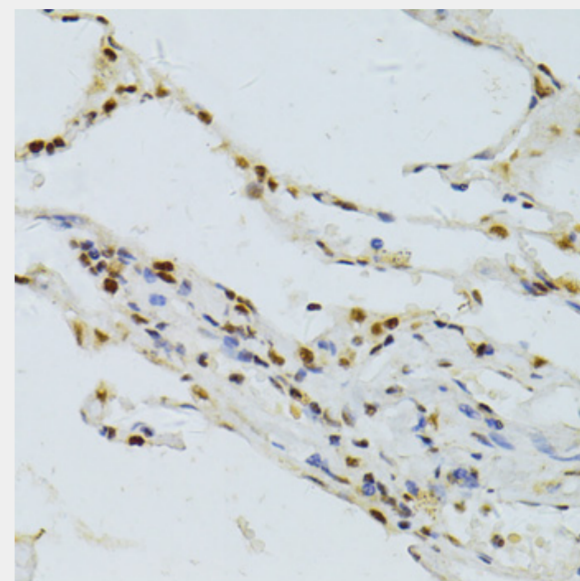
Immunohistochemistry of paraffin-embedded rat liver using ALYREF antibody at dilution of 1:100 (40x lens).



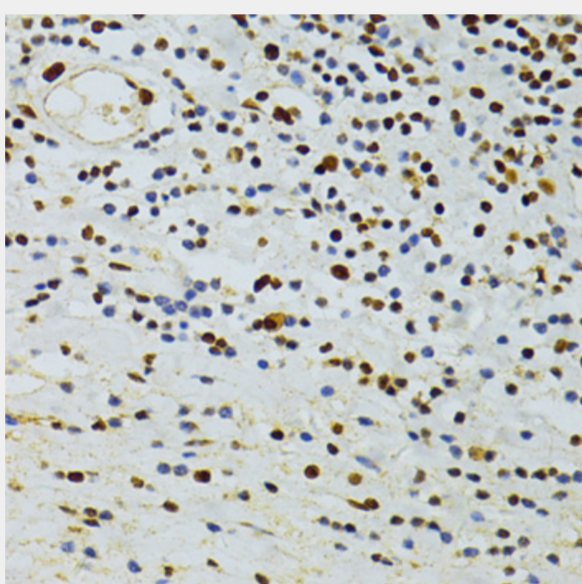
Immunohistochemistry of paraffin-embedded rat ovary using ALYREF antibody at dilution of 1:100 (40x lens).



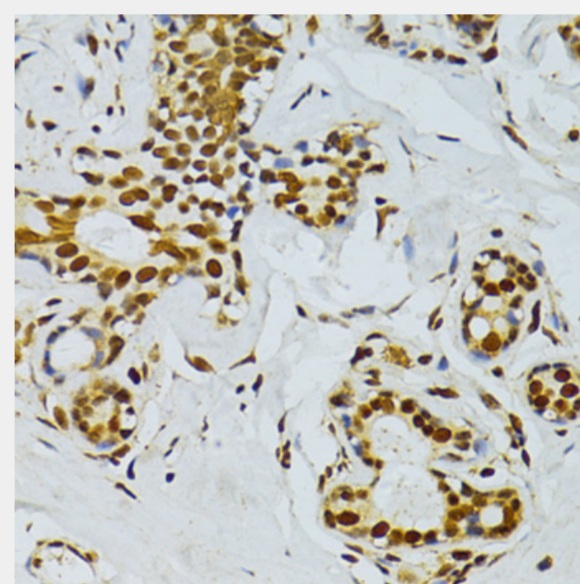
Immunohistochemistry of paraffin-embedded rat brain using ALYREF antibody at dilution of 1:100 (40x lens).



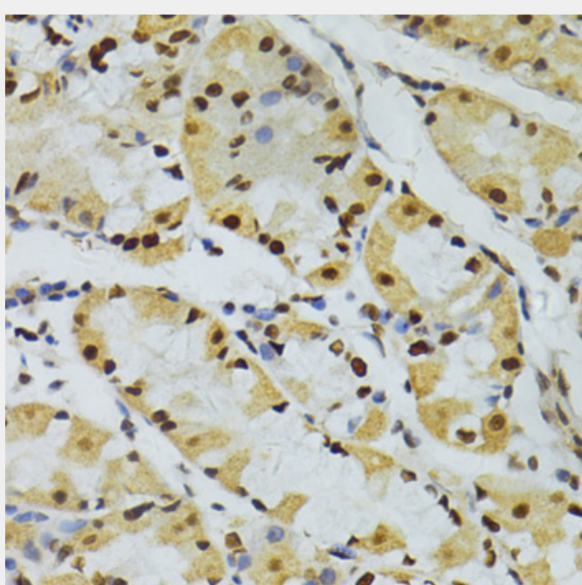
Immunohistochemistry of paraffin-embedded human lung cancer using ALYREF antibody at dilution of 1:100 (40x lens).



Immunohistochemistry of paraffin-embedded human vermiform appendix using ALYREF antibody at dilution of 1:100 (40x lens).



Immunohistochemistry of paraffin-embedded human breast using ALYREF antibody at dilution of 1:100 (40x lens).



Immunohistochemistry of paraffin-embedded human stomach using ALYREF antibody at dilution of 1:100 (40x lens).

All products are for RESEARCH USE ONLY. Not for diagnostic & therapeutic purposes!