

# Polyclonal Antibody to Transthyretin (TTR)

Catalog No: tcua6263



## Available Sizes

**Size:** 20ul

**Size:** 100ul

**Size:** 200ul



## Specifications

**Application:**

WB; IHC; ICC; IP.

**Species Reactivity:**

Sus scrofa; Porcine (Pig)

**Host Species:**

Rabbit

**Conjugation:**

Unconjugated

**Clonality:**

Polyclonal

**Form:**

Liquid

**Storage Buffer:**

PBS, pH7.4, containing 0.02% NaN<sub>3</sub>, 50% glycerol.

**Recommended Dilution:**

Western blotting: 0.2-2μg/mL;1:250-2500

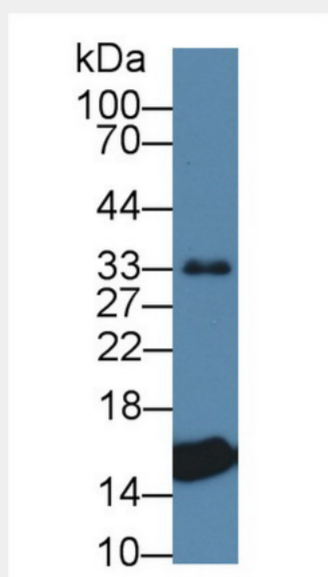
Immunohistochemistry: 5-20μg/mL;1:25-100

Immunocytochemistry: 5-20μg/mL;1:25-100

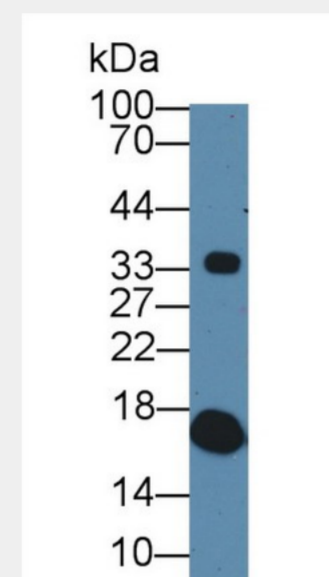
Optimal working dil

**Alternative Names:**

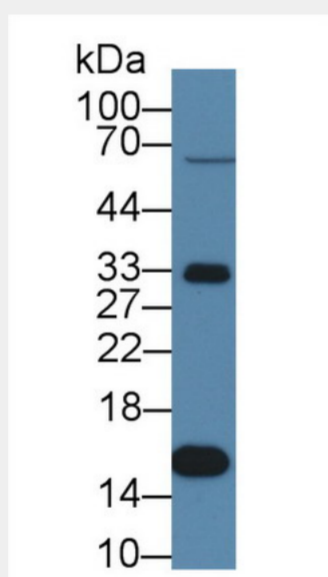
TBPA; PA; PLB; ATTR; PALB; Prealbumin; Prealbumin Amyloidosis Type I; Transports Thyroxine and Retinol



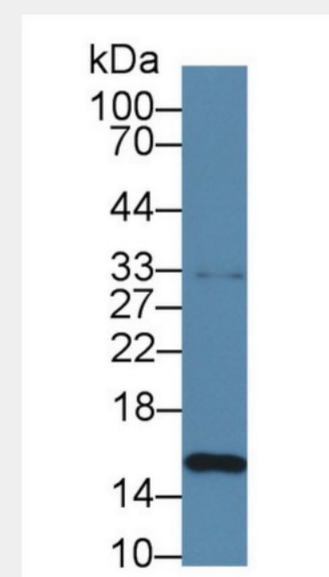
Western Blot; Sample: Porcine Heart lysate; Primary Ab: 1µg/ml Rabbit Anti-Porcine TTR Antibody Second Ab: 0.2µg/mL HRP-Linked Caprine Anti-Rabbit IgG Polyclonal Antibody (Catalog: SAA544Rb19)



Western Blot; Sample: Porcine Serum; Primary Ab: 1µg/ml Rabbit Anti-Porcine TTR Antibody Second Ab: 0.2µg/mL HRP-Linked Caprine Anti-Rabbit IgG Polyclonal Antibody Catalog: SAA544Rb19)



Western Blot; Sample: Porcine Liver lysate; Primary Ab: 1µg/ml Rabbit Anti-Porcine TTR Antibody Second Ab: 0.2µg/mL HRP-Linked Caprine Anti-Rabbit IgG Polyclonal Antibody Catalog: SAA544Rb19)



Western Blot; Sample: Porcine Spleen lysate; Primary Ab: 1µg/ml Rabbit Anti-Porcine TTR Antibody Second Ab: 0.2µg/mL HRP-Linked Caprine Anti-Rabbit IgG Polyclonal Antibody Catalog: SAA544Rb19)

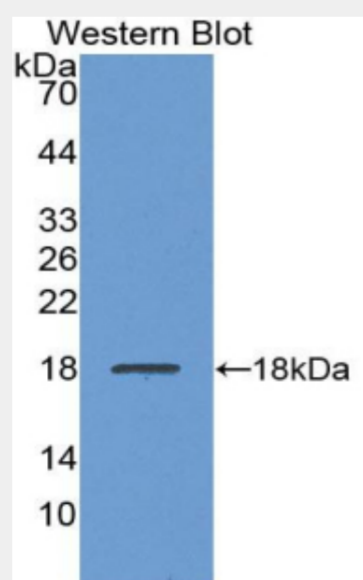


Figure. Western Blot; Sample: Recombinant protein.)

All products are for RESEARCH USE ONLY. Not for diagnostic & therapeutic purposes!