

XRCC5 Polyclonal Antibody

Catalog No: tcba9743



Available Sizes

Size: 50ul

Size: 100ul

Size: 200ul



Specifications

Application:

WB,IHC,IF,IP

Research Area:

Cancer,DNA Damage/Repair,RNA Binding Protein(RBP),

Species Reactivity:

Human

Host Species:

Rabbit

Isotype:

IgG

Form:

Liquid

Storage Buffer:

Buffer: PBS with 0.02% sodium azide, 50% glycerol, pH7.3.

Recommended Dilution:

WB 1:500 - 1:2000

IHC 1:100 - 1:200

IF 1:20 - 1:100

IP 1:50 - 1:200

Storage Instruction:

Store at -20°C. Avoid freeze / thaw cycles.

Alternative Names:

KARP-1;KARP1;KU80;Ku86;KUB2;NFIV

SwissProt:

P13010

Gene ID:

7520 (human);

Calculated Molecular Weight:

82kDa

Purification:

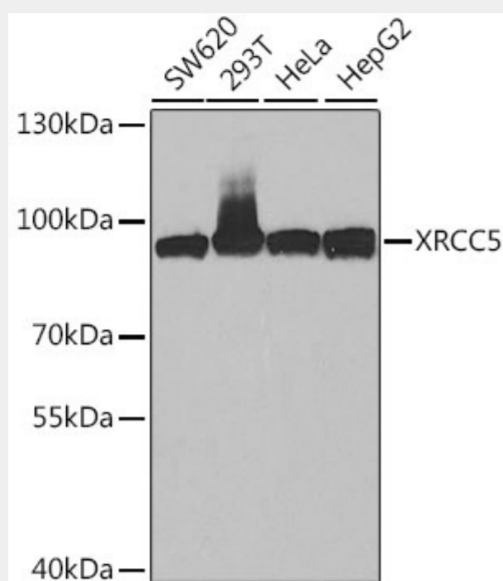
Affinity purification

Cellular Location:

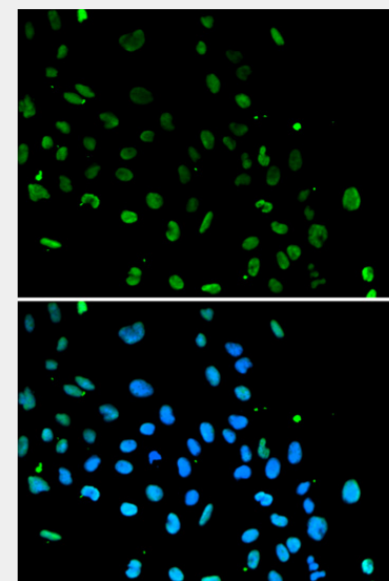
Chromosome,Nucleus,nucleolus,

Product Description

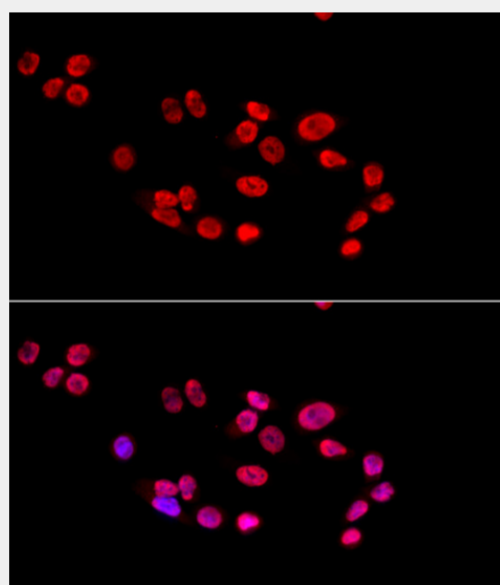
The protein encoded by this gene is the 80-kilodalton subunit of the Ku heterodimer protein which is also known as ATP-dependant DNA helicase II or DNA repair protein XRCC5. Ku is the DNA-binding component of the DNA-dependent protein kinase, and it functions together with the DNA ligase IV-XRCC4 complex in the repair of DNA double-strand break by non-homologous end joining and the completion of V(D)J recombination events. This gene functionally complements Chinese hamster xrs-6, a mutant defective in DNA double-strand break repair and in ability to undergo V(D)J recombination. A rare microsatellite polymorphism in this gene is associated with cancer in patients of varying radiosensitivity.



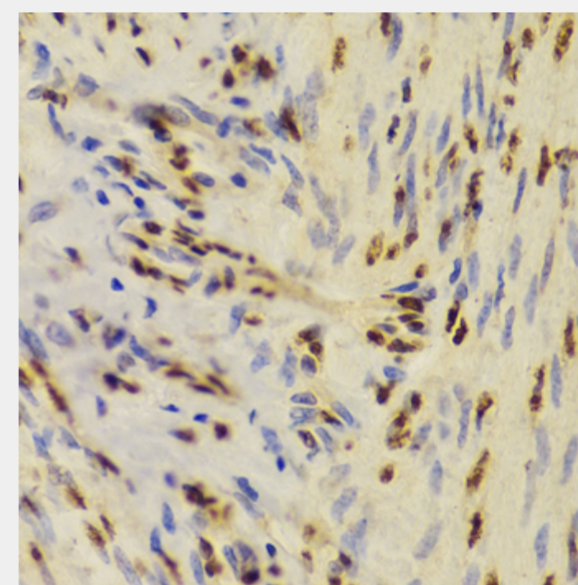
Western blot analysis of extracts of various cell lines, using XRCC5 antibody at 1:1000 dilution.
Secondary antibody: HRP Goat Anti-Rabbit IgG (H+L) at 1:10000 dilution.
Lysates/proteins: 25ug per lane.
Blocking buffer: 3% nonfat dry milk in TBST.
Detection: ECL Basic Kit.
Exposure time: 60s.



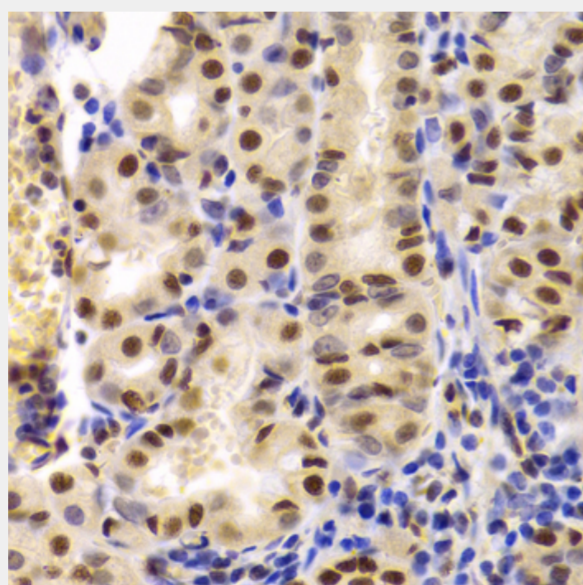
Immunofluorescence analysis of A549 cells using XRCC5 antibody. Blue: DAPI for nuclear staining.



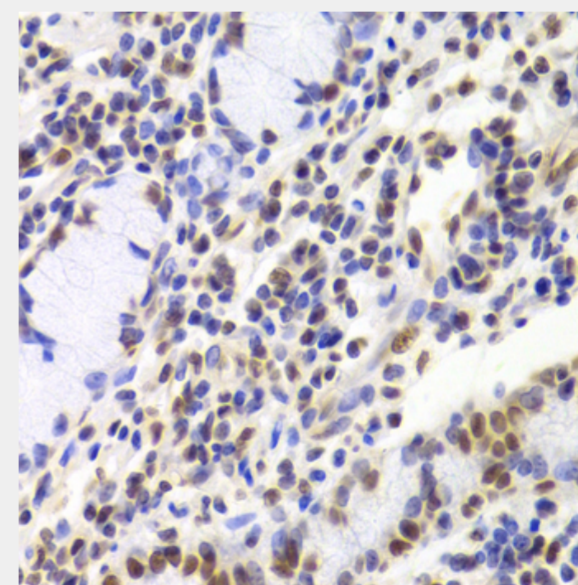
Immunofluorescence analysis of HeLa cells using XRCC5 antibody at dilution of 1:100 (40x lens). Blue: DAPI for nuclear staining.



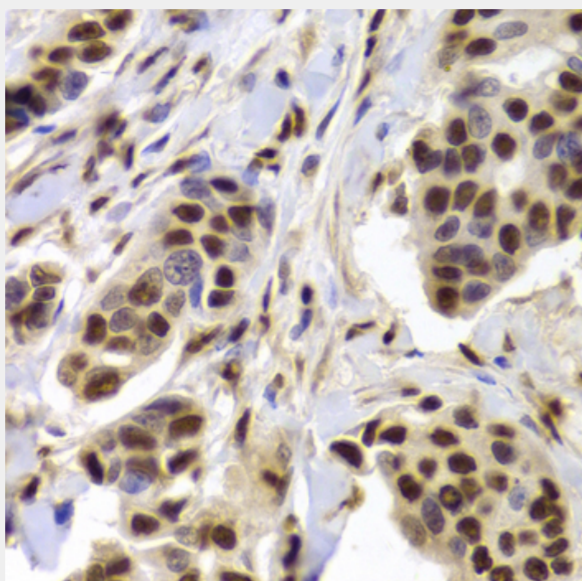
Immunohistochemistry of paraffin-embedded human adenomyosis using XRCC5 Antibody at dilution of 1:100 (40x lens).



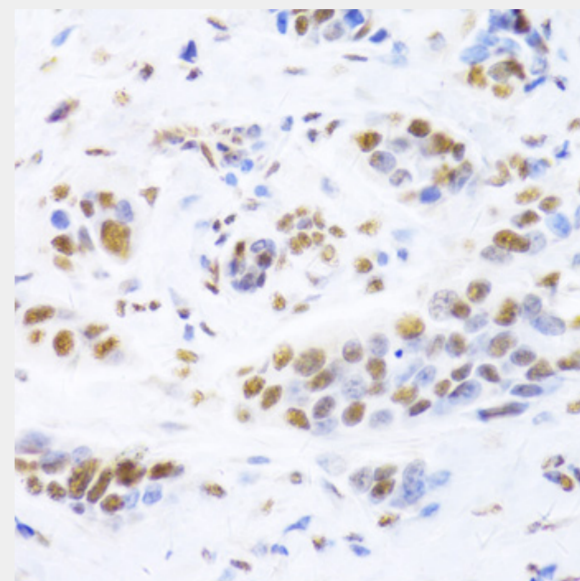
Immunohistochemistry of paraffin-embedded human stomach using XRCC5 Antibody at dilution of 1:100 (40x lens).



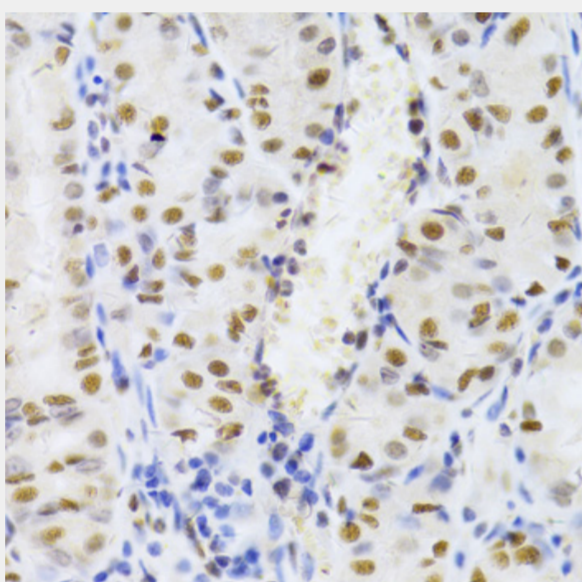
Immunohistochemistry of paraffin-embedded human gastric cancer using XRCC5 Antibody at dilution of 1:100 (40x lens).



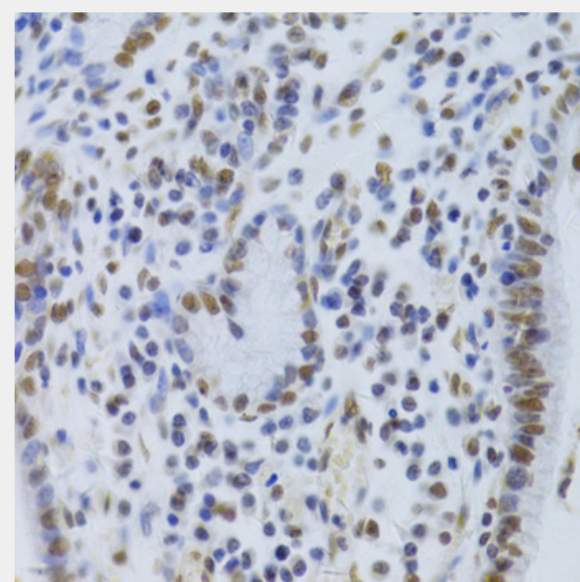
Immunohistochemistry of paraffin-embedded human breast cancer using XRCC5 Antibody at dilution of 1:100 (40x lens).



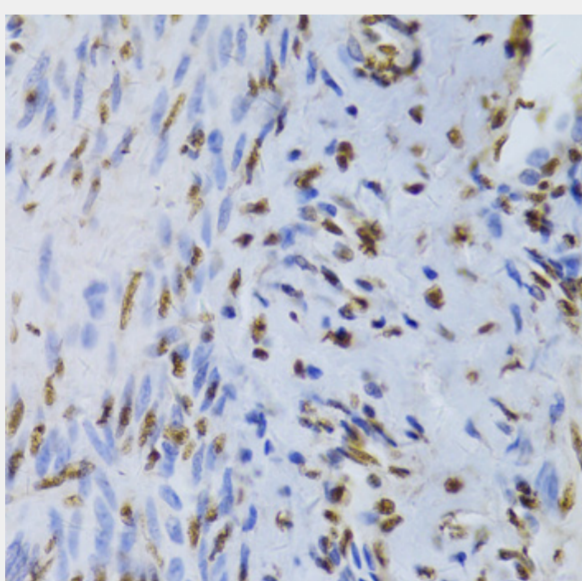
Immunohistochemistry of paraffin-embedded human breast cancer using XRCC5 Antibody at dilution of 1:100 (40x lens).



Immunohistochemistry of paraffin-embedded human stomach using XRCC5 Antibody at dilution of 1:100 (40x lens).



Immunohistochemistry of paraffin-embedded human gastric cancer using XRCC5 Antibody at dilution of 1:100 (40x lens).



Immunohistochemistry of paraffin-embedded human adenomyosis using XRCC5 Antibody at dilution of 1:100 (40x lens).

All products are for RESEARCH USE ONLY. Not for diagnostic & therapeutic purposes!