

ATP1B1 Polyclonal Antibody

Catalog No: tcba9674



Available Sizes

Size: 50ul

Size: 100ul

Size: 200ul



Specifications

Application:

WB,IHC

Research Area:

Cancer,Cardiovascular,Metabolism,Calcium pathway,

Species Reactivity:

Human,Mouse,Rat

Host Species:

Rabbit

Isotype:

IgG

Form:

Liquid

Storage Buffer:

Buffer: PBS with 0.02% sodium azide, 50% glycerol, pH7.3.

Recommended Dilution:

WB 1:500 - 1:2000

IHC 1:50 - 1:200

Storage Instruction:

Store at -20°C. Avoid freeze / thaw cycles.

Alternative Names:

ATP1B

SwissProt:

P05026

Gene ID:

481 (human);

Calculated Molecular Weight:

34kDa/35kDa

Purification:

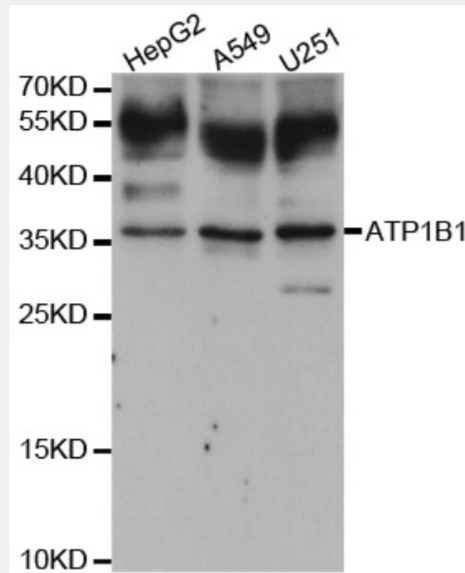
Affinity purification

Cellular Location:

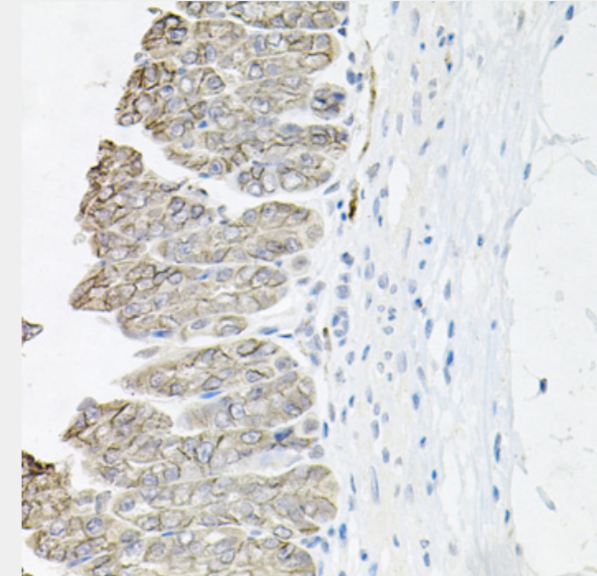
Cell membrane,Single-pass type II membrane protein,

Product Description

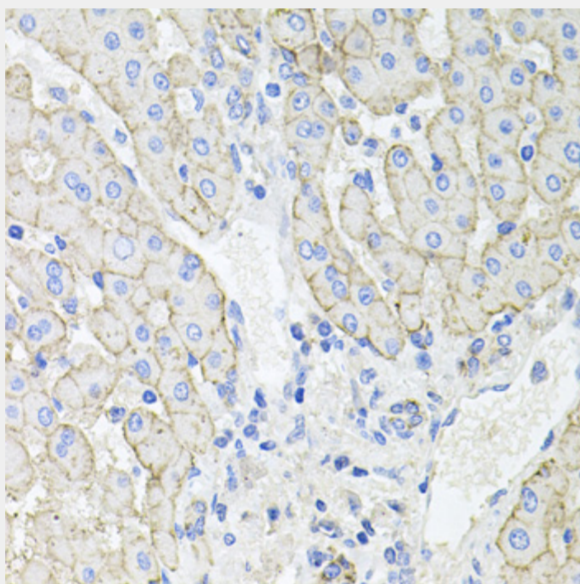
The protein encoded by this gene belongs to the family of Na⁺/K⁺ and H⁺/K⁺ ATPases beta chain proteins, and to the subfamily of Na⁺/K⁺ -ATPases. Na⁺/K⁺ -ATPase is an integral membrane protein responsible for establishing and maintaining the electrochemical gradients of Na and K ions across the plasma membrane. These gradients are essential for osmoregulation, for sodium-coupled transport of a variety of organic and inorganic molecules, and for electrical excitability of nerve and muscle. This enzyme is composed of two subunits, a large catalytic subunit (alpha) and a smaller glycoprotein subunit (beta). The beta subunit regulates, through assembly of alpha/beta heterodimers, the number of sodium pumps transported to the plasma membrane. The glycoprotein subunit of Na⁺/K⁺ -ATPase is encoded by multiple genes. This gene encodes a beta 1 subunit. Alternatively spliced transcript variants encoding different isoforms have been described, but their biological validity is not known.



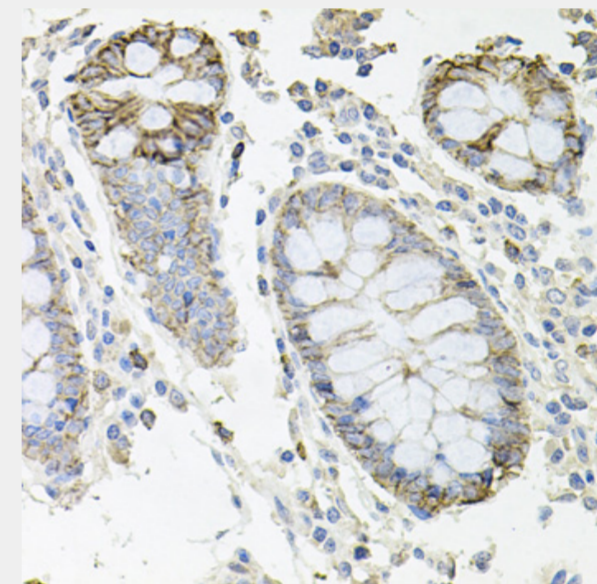
Western blot analysis of extracts of various cell lines, using ATP1B1 antibody at 1:1000 dilution.
Secondary antibody: HRP Goat Anti-Rabbit IgG (H+L) at 1:10000 dilution.
Lysates/proteins: 25ug per lane.
Blocking buffer: 3% nonfat dry milk in TBST.
Detection: ECL Basic Kit.
Exposure time: 3s.



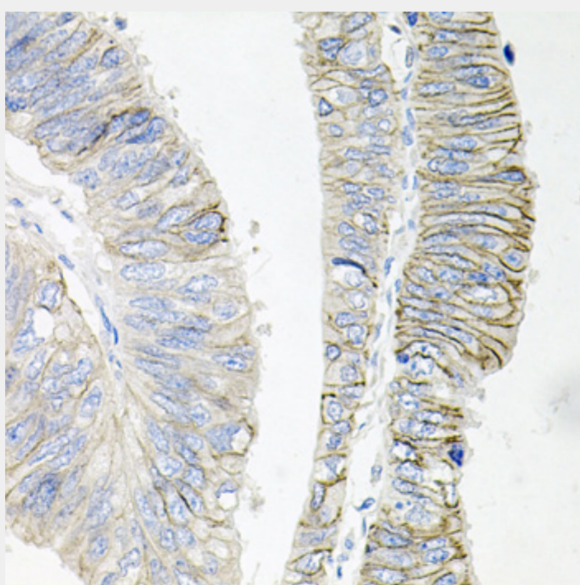
Immunohistochemistry of paraffin-embedded mouse stomach using ATP1B1 antibody at dilution of 1:100 (40x lens).



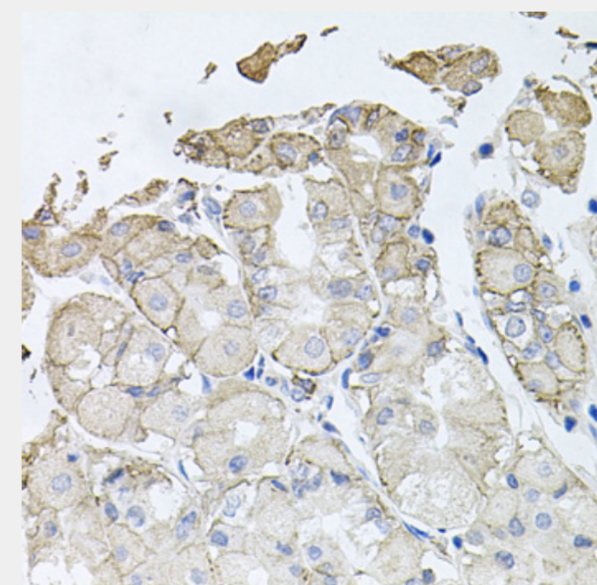
Immunohistochemistry of paraffin-embedded human liver injury using ATP1B1 antibody at dilution of 1:100 (40x lens).



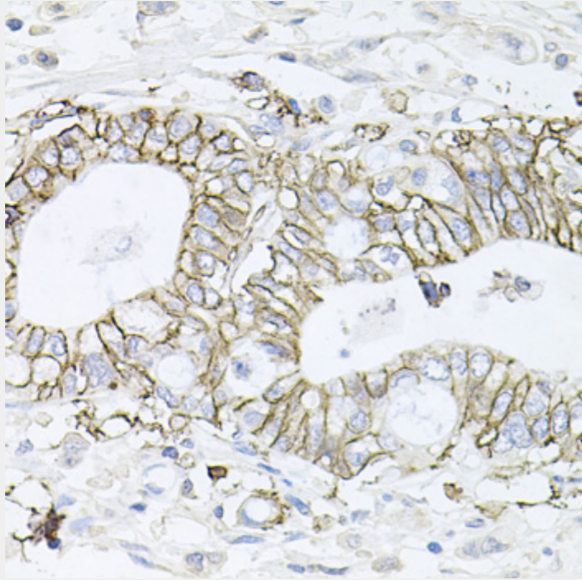
Immunohistochemistry of paraffin-embedded human colon using ATP1B1 antibody at dilution of 1:100 (40x lens).



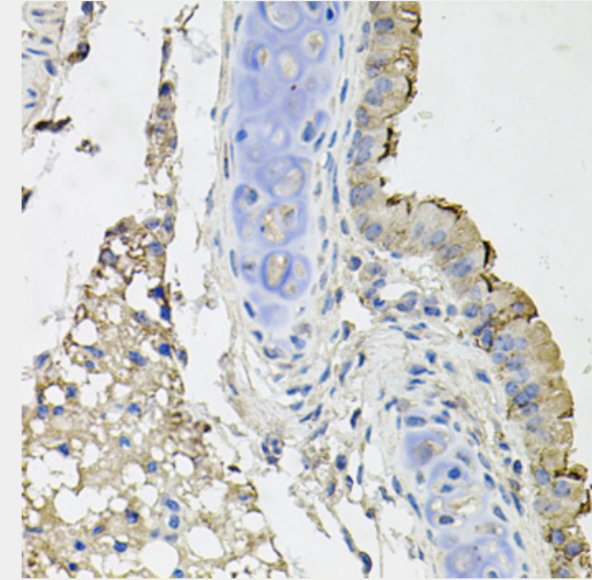
Immunohistochemistry of paraffin-embedded human colon carcinoma using ATP1B1 antibody at dilution of 1:100 (40x lens).



Immunohistochemistry of paraffin-embedded human stomach using ATP1B1 antibody at dilution of 1:100 (40x lens).



Immunohistochemistry of paraffin-embedded human gastric cancer using ATP1B1 antibody at dilution of 1:100 (40x lens).



Immunohistochemistry of paraffin-embedded mouse lung using ATP1B1 antibody at dilution of 1:100 (40x lens).

All products are for RESEARCH USE ONLY. Not for diagnostic & therapeutic purposes!