

# ATP5B Polyclonal Antibody

Catalog No: tcba9653



## Available Sizes

---

**Size:** 50ul

---

**Size:** 100ul

---

**Size:** 200ul

---



## Specifications

---

**Application:**

WB,IHC,IF

---

**Research Area:**

Cancer,Neuroscience,Metabolism,Neurodegeneration,

---

**Species Reactivity:**

Human,Mouse,Rat

---

**Host Species:**

Rabbit

---

**Isotype:**

IgG

---

**Form:**

Liquid

---

**Storage Buffer:**

Buffer: PBS with 0.02% sodium azide, 50% glycerol, pH7.3.

---

**Recommended Dilution:**

WB 1:500 - 1:2000

IHC 1:50 - 1:200

IF 1:50 - 1:200

---

**Storage Instruction:**

Store at -20°C. Avoid freeze / thaw cycles.

---

**Alternative Names:**

ATPMB;ATPSB;HEL-S-271

---

**SwissProt:**

P06576

---

**Gene ID:**

506 (human);

---

**Calculated Molecular Weight:**

56kDa

---

**Purification:**

Affinity purification

---

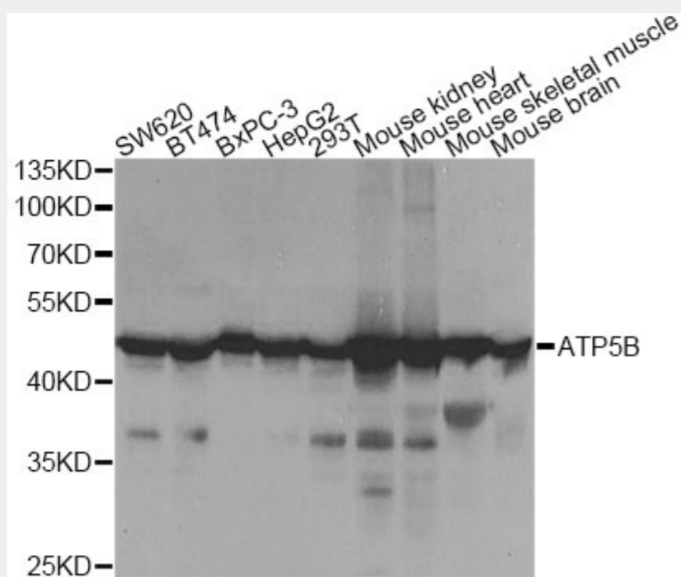
**Cellular Location:**

Mitochondrion,Mitochondrion inner membrane,

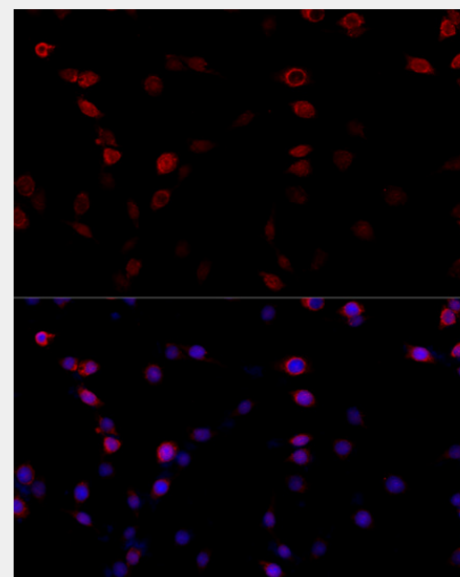
---

**Product Description**

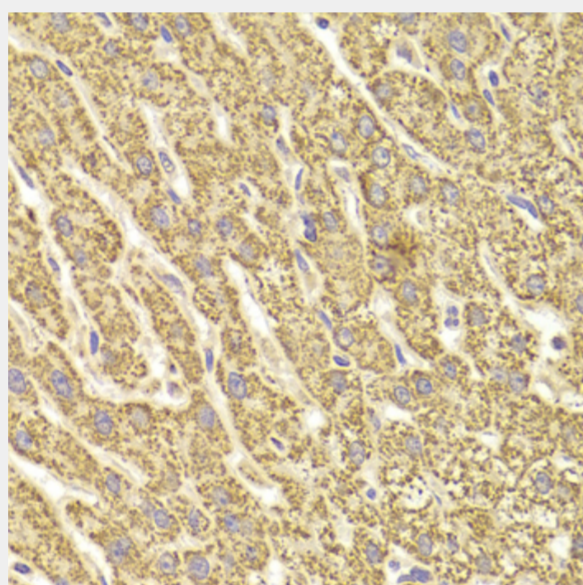
This gene encodes a subunit of mitochondrial ATP synthase. Mitochondrial ATP synthase catalyzes ATP synthesis, utilizing an electrochemical gradient of protons across the inner membrane during oxidative phosphorylation. ATP synthase is composed of two linked multi-subunit complexes: the soluble catalytic core, F<sub>1</sub>, and the membrane-spanning component, F<sub>o</sub>, comprising the proton channel. The catalytic portion of mitochondrial ATP synthase consists of 5 different subunits (alpha, beta, gamma, delta, and epsilon) assembled with a stoichiometry of 3 alpha, 3 beta, and a single representative of the other 3. The proton channel consists of three main subunits (a, b, c). This gene encodes the beta subunit of the catalytic core.



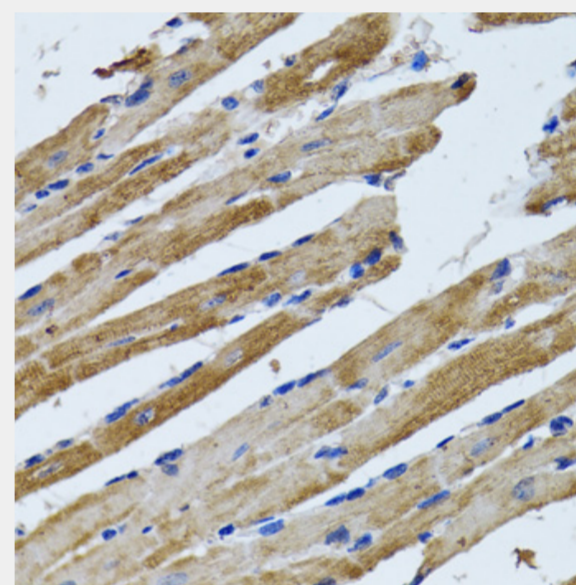
Western blot analysis of extracts of various cell lines, using ATP5B Antibody at 1:1000 dilution.  
Secondary antibody: HRP Goat Anti-Rabbit IgG (H+L) at 1:10000 dilution.  
Lysates/proteins: 25ug per lane.  
Blocking buffer: 3% nonfat dry milk in TBST.  
Detection: ECL Basic Kit.  
Exposure time: 3s.



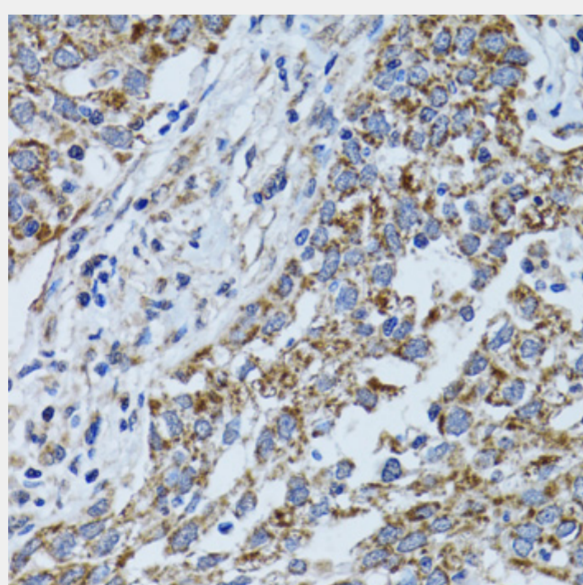
Immunofluorescence analysis of PC-12 cells using ATP5B antibody at dilution of 1:100 (40x lens). Blue: DAPI for nuclear staining.



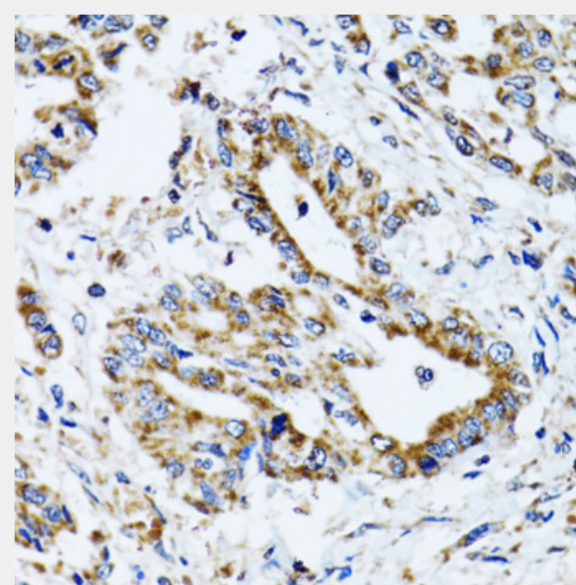
Immunohistochemistry of paraffin-embedded human liver injury using ATP5B antibody at dilution of 1:100 (40x lens).



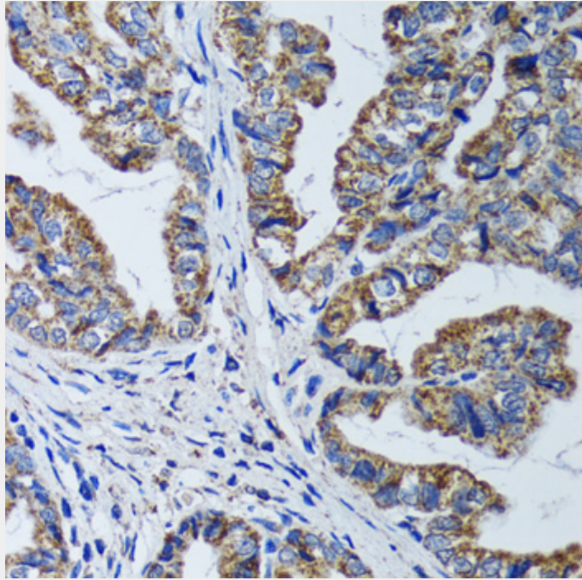
Immunohistochemistry of paraffin-embedded rat heart using ATP5B antibody at dilution of 1:100 (40x lens).



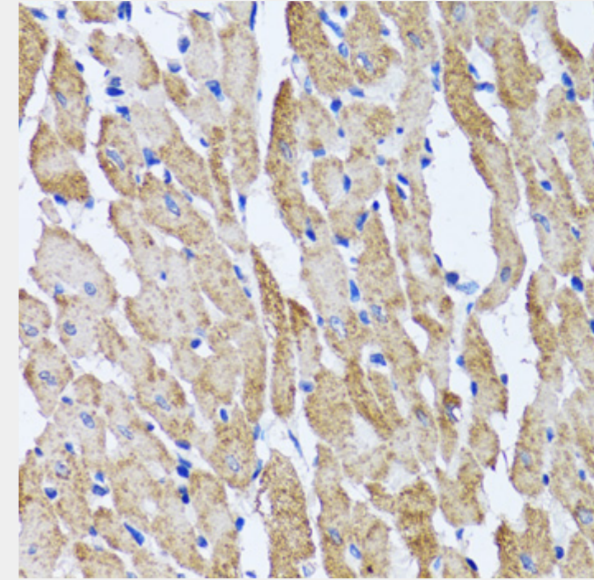
Immunohistochemistry of paraffin-embedded human lung cancer using ATP5B antibody at dilution of 1:100 (40x lens).



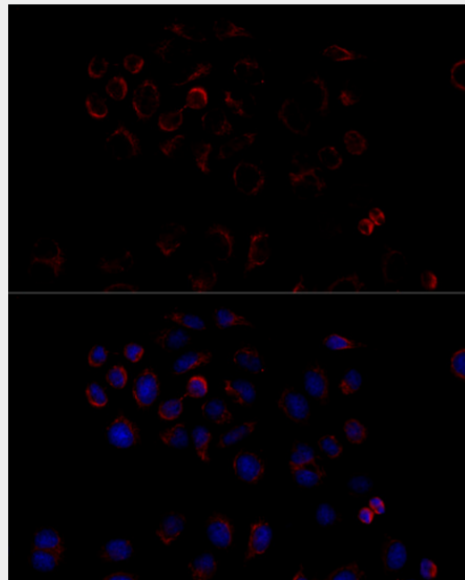
Immunohistochemistry of paraffin-embedded human colon carcinoma using ATP5B antibody at dilution of 1:100 (40x lens).



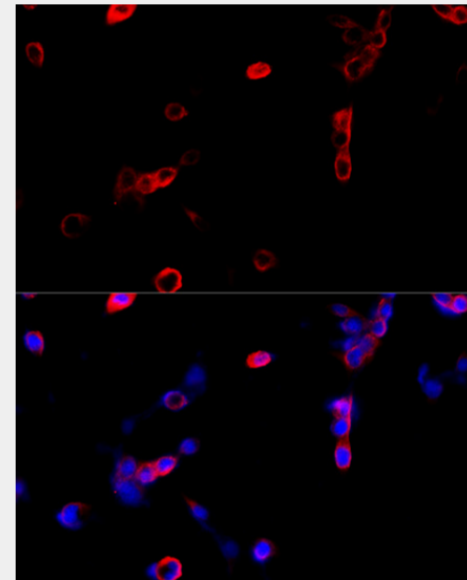
Immunohistochemistry of paraffin-embedded human gastric cancer using ATP5B antibody at dilution of 1:100 (40x lens).



Immunohistochemistry of paraffin-embedded mouse heart using ATP5B antibody at dilution of 1:100 (40x lens).



Immunofluorescence analysis of HeLa cells using ATP5B antibody at dilution of 1:100 (40x lens). Blue: DAPI for nuclear staining.



Immunofluorescence analysis of NIH/3T3 cells using ATP5B antibody at dilution of 1:100 (40x lens). Blue: DAPI for nuclear staining.

All products are for RESEARCH USE ONLY. Not for diagnostic & therapeutic purposes!