

ANP32A Polyclonal Antibody

Catalog No: tcba9652



Available Sizes

Size: 50ul

Size: 100ul

Size: 200ul



Specifications

Application:

WB,IHC,IF

Research Area:

Cancer,Apoptosis,Cell Biology,Metabolism,

Species Reactivity:

Human,Mouse,Rat

Host Species:

Rabbit

Isotype:

IgG

Form:

Liquid

Storage Buffer:

Buffer: PBS with 0.02% sodium azide, 50% glycerol, pH7.3.

Recommended Dilution:

WB 1:500 - 1:2000

IHC 1:50 - 1:200

IF 1:50 - 1:200

Storage Instruction:

Store at -20°C. Avoid freeze / thaw cycles.

Alternative Names:

C15orf1;HPPCn;I1PP2A;LANP;MAPM;PHAP1;PHAPI;PP32

SwissProt:

P39687

Gene ID:

8125 (human);

Calculated Molecular Weight:

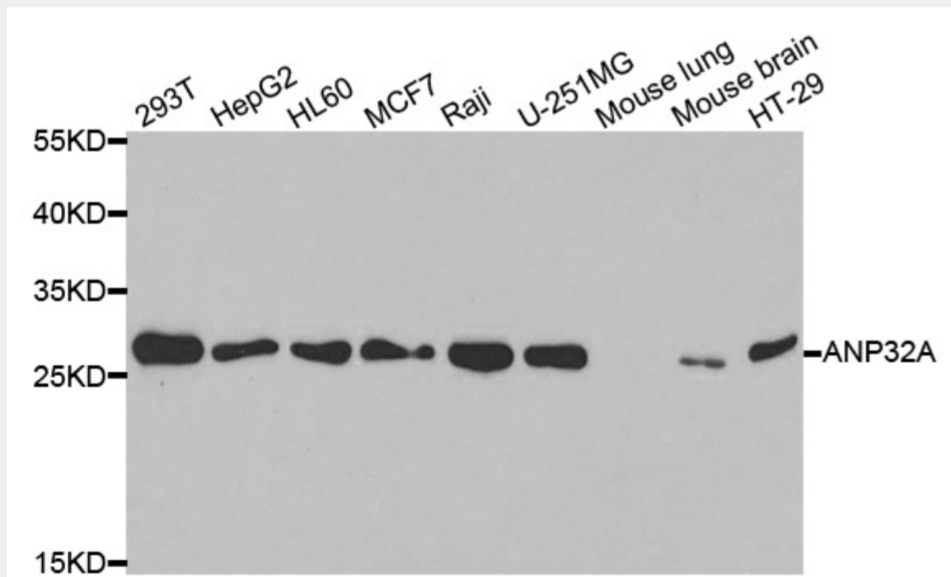
28kDa

Purification:

Affinity purification

Cellular Location:

Cytoplasm,Endoplasmic reticulum,Nucleus,



Western blot analysis of extracts of various cell lines, using ANP32A antibody at 1:1000 dilution.

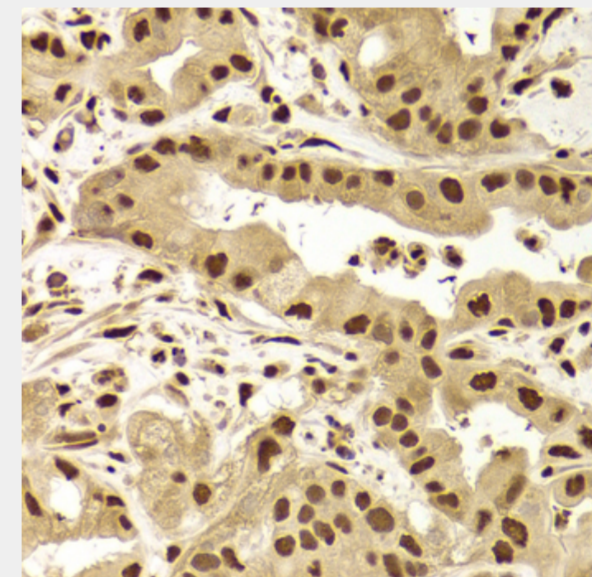
Secondary antibody: HRP Goat Anti-Rabbit IgG (H+L) at 1:10000 dilution.

Lysates/proteins: 25ug per lane.

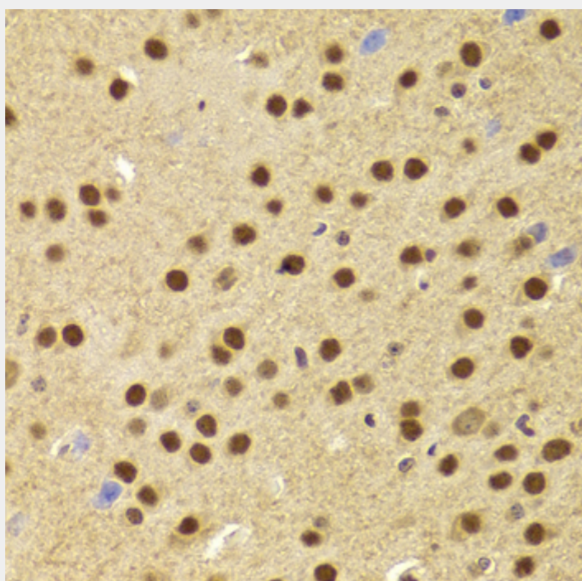
Blocking buffer: 3% nonfat dry milk in TBST.

Detection: ECL Basic Kit.

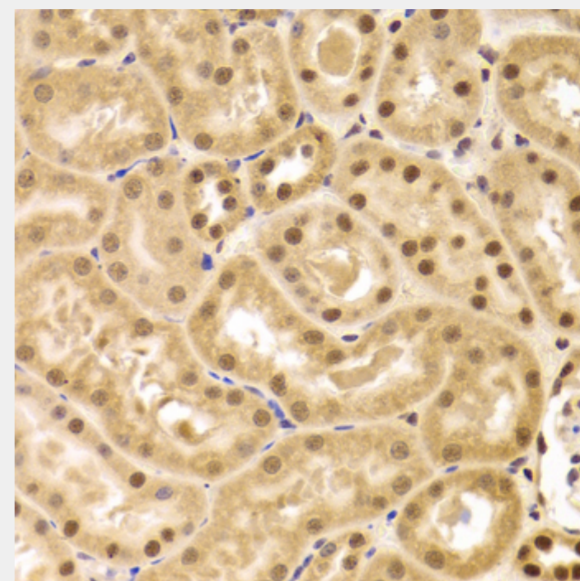
Exposure time: 30s.



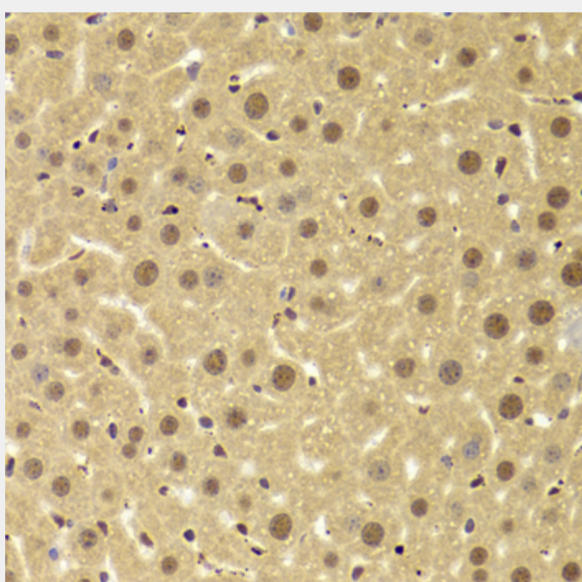
Immunohistochemistry of paraffin-embedded human liver cancer using ANP32A Antibody at dilution of 1:100 (40x lens).



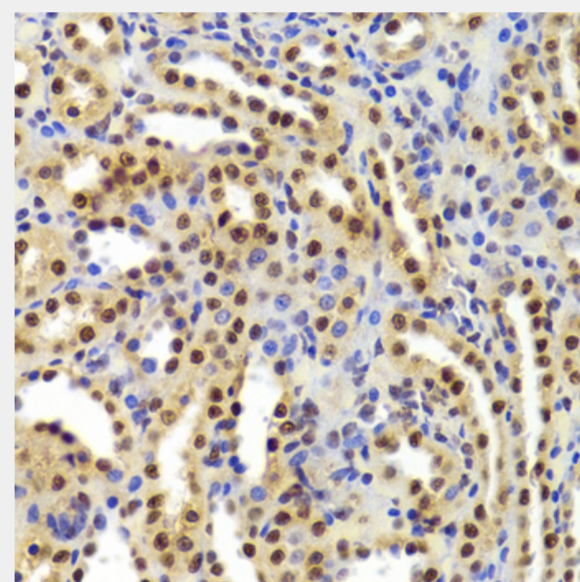
Immunohistochemistry of paraffin-embedded mouse brain using ANP32A Antibody at dilution of 1:100 (40x lens).



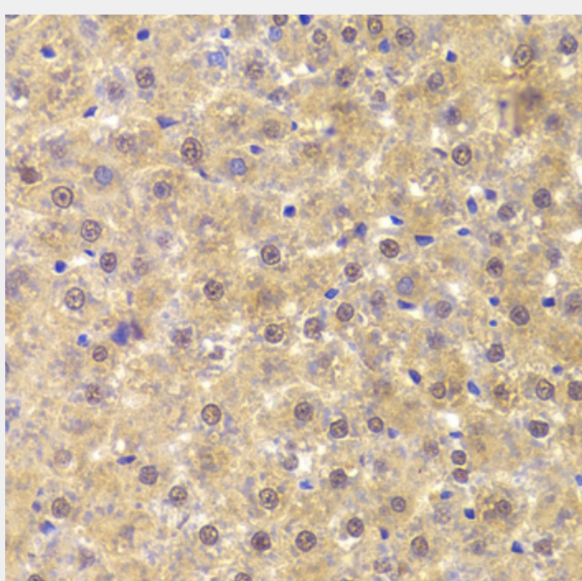
Immunohistochemistry of paraffin-embedded mouse kidney using ANP32A Antibody at dilution of 1:100 (40x lens).



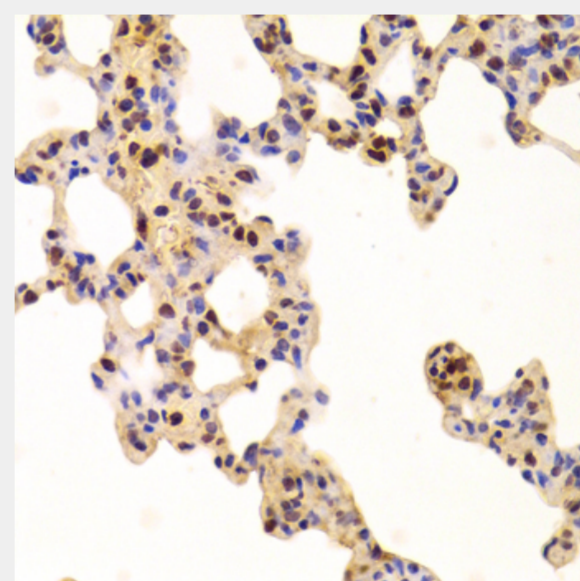
Immunohistochemistry of paraffin-embedded mouse liver using ANP32A Antibody at dilution of 1:100 (40x lens).



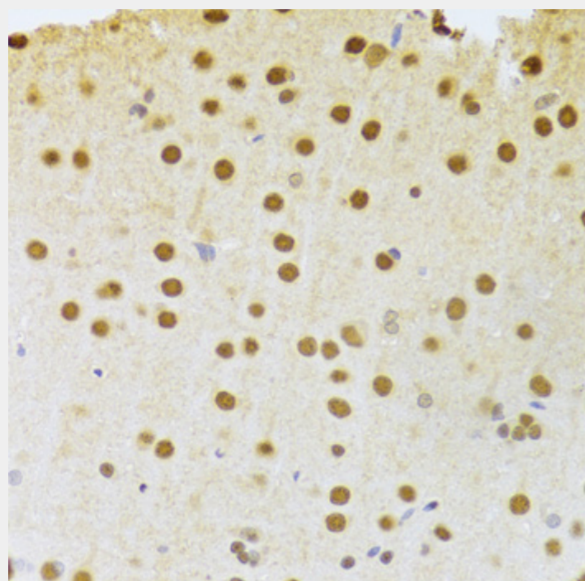
Immunohistochemistry of paraffin-embedded rat kidney using ANP32A Antibody at dilution of 1:100 (40x lens).



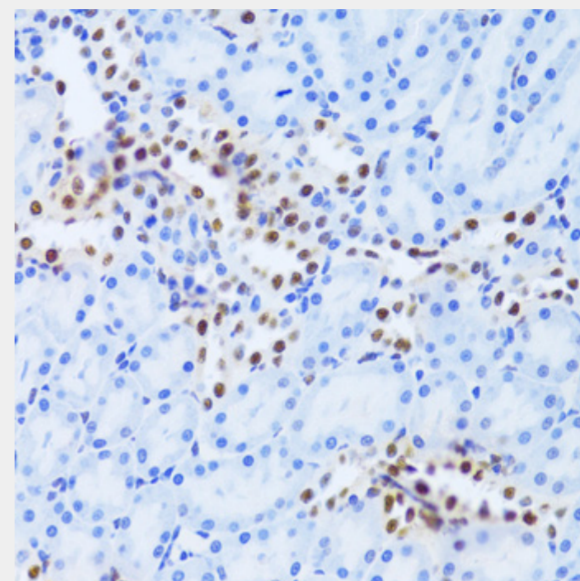
Immunohistochemistry of paraffin-embedded rat liver using ANP32A Antibody at dilution of 1:100 (40x lens).



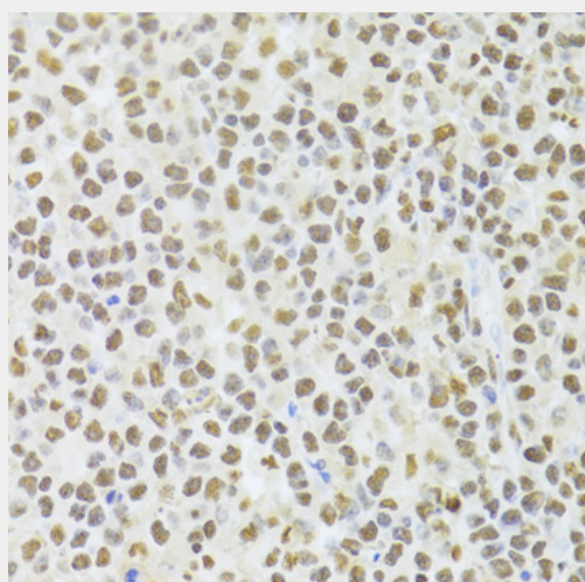
Immunohistochemistry of paraffin-embedded rat lung using ANP32A Antibody at dilution of 1:100 (40x lens).



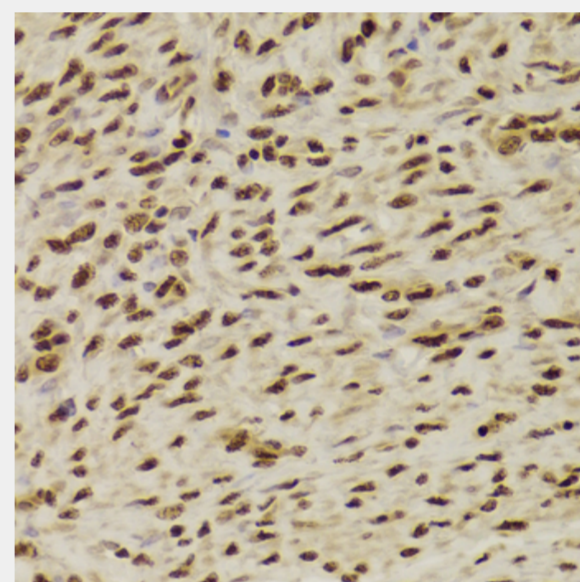
Immunohistochemistry of paraffin-embedded rat brain using ANP32A Antibody at dilution of 1:100 (40x lens).



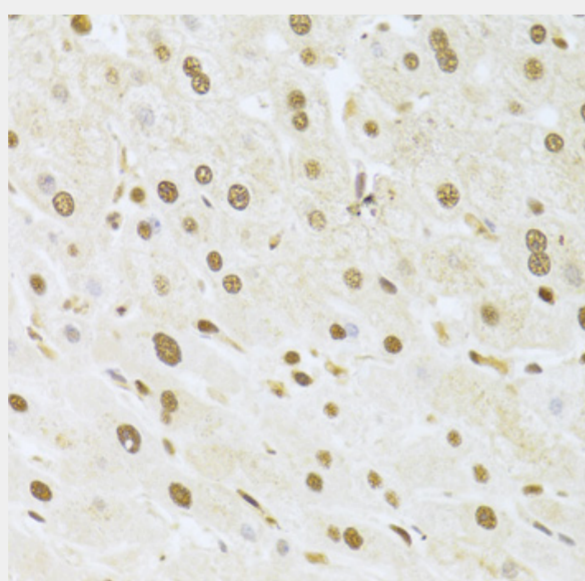
Immunohistochemistry of paraffin-embedded rat kidney using ANP32A Antibody at dilution of 1:100 (40x lens).



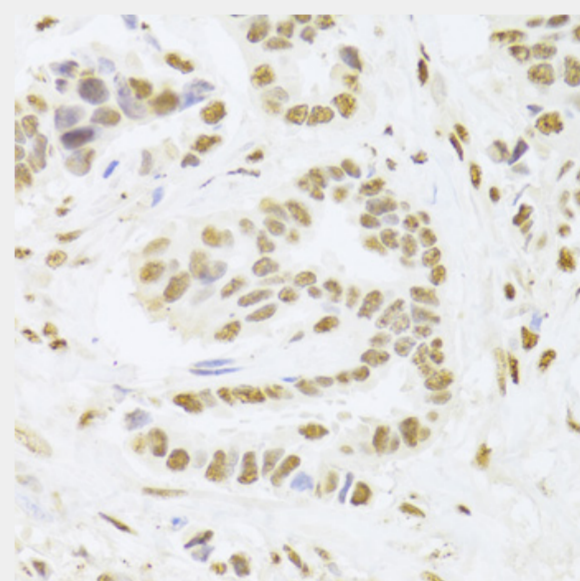
Immunohistochemistry of paraffin-embedded human B cell lymphoma using ANP32A Antibody at dilution of 1:100 (40x lens).



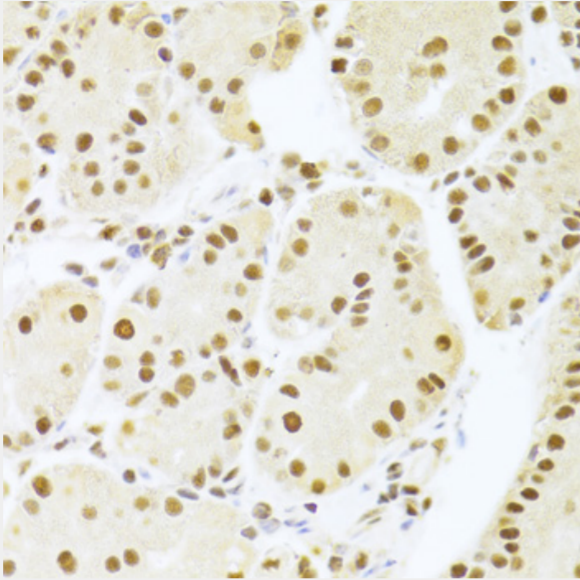
Immunohistochemistry of paraffin-embedded human adenomyosis using ANP32A Antibody at dilution of 1:100 (40x lens).



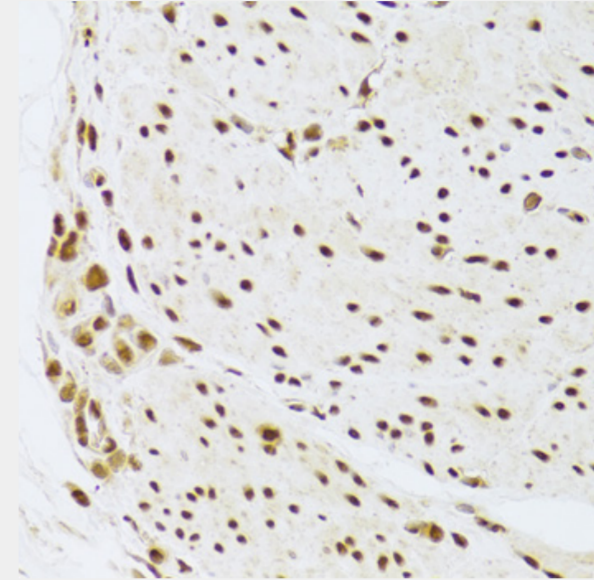
Immunohistochemistry of paraffin-embedded human liver injury using ANP32A Antibody at dilution of 1:100 (40x lens).



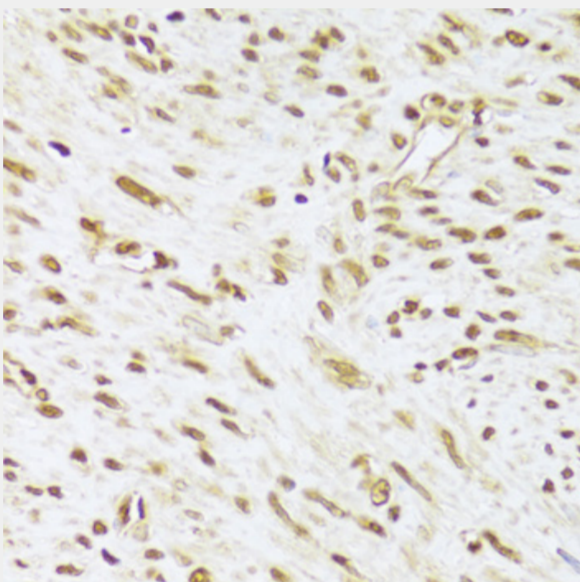
Immunohistochemistry of paraffin-embedded human breast cancer using ANP32A Antibody at dilution of 1:100 (40x lens).



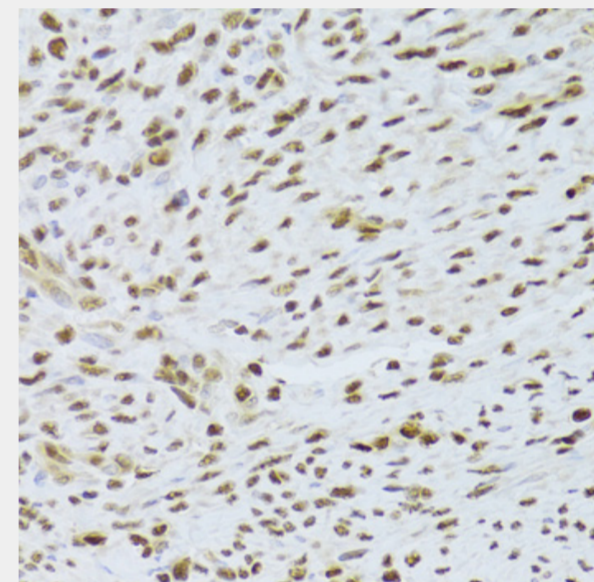
Immunohistochemistry of paraffin-embedded human stomach using ANP32A Antibody at dilution of 1:100 (40x lens).



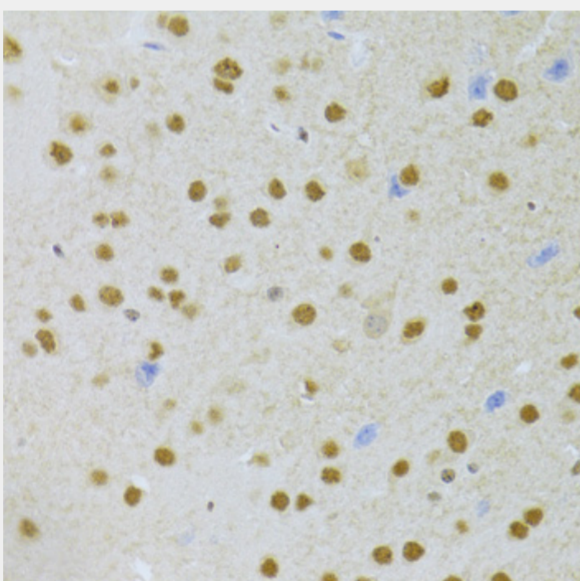
Immunohistochemistry of paraffin-embedded human gastric cancer using ANP32A Antibody at dilution of 1:100 (40x lens).



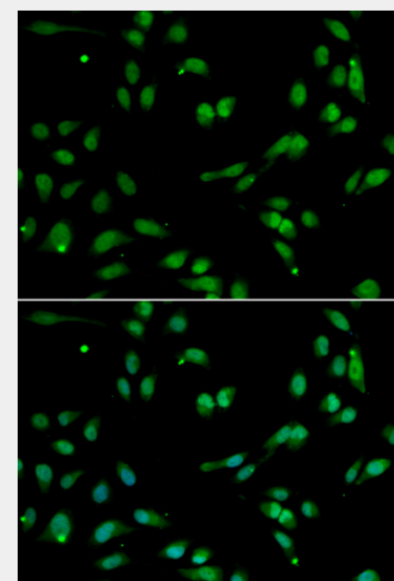
Immunohistochemistry of paraffin-embedded human leiomyoma of uterus using ANP32A Antibody at dilution of 1:100 (40x lens).



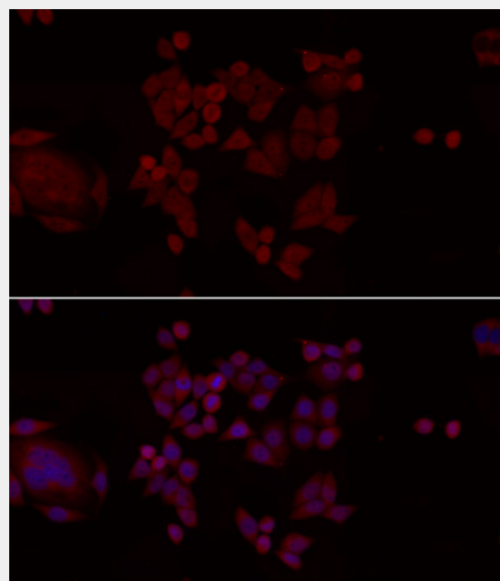
Immunohistochemistry of paraffin-embedded human adenomyosis using ANP32A Antibody at dilution of 1:100 (40x lens).



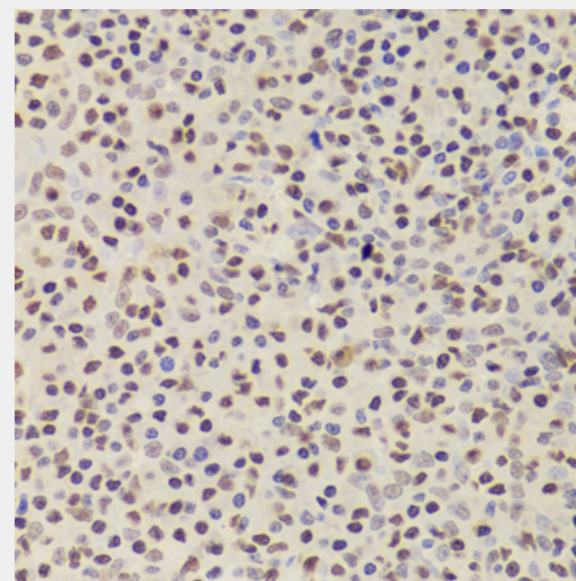
Immunohistochemistry of paraffin-embedded mouse brain using ANP32A Antibody at dilution of 1:100 (40x lens).



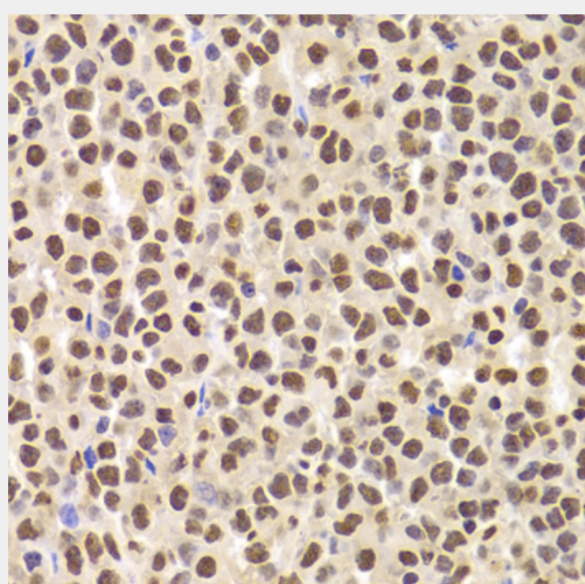
Immunofluorescence analysis of A549 cells using ANP32A antibody. Blue: DAPI for nuclear staining.



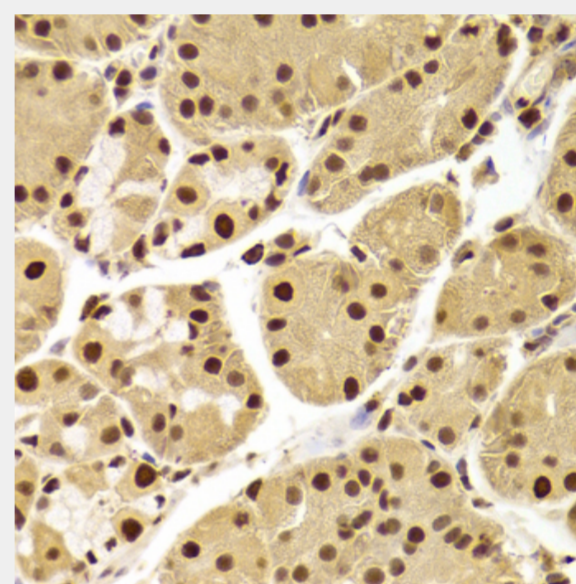
Immunofluorescence analysis of HeLa cells using ANP32A antibody at dilution of 1:100 (40x lens). Blue: DAPI for nuclear staining.



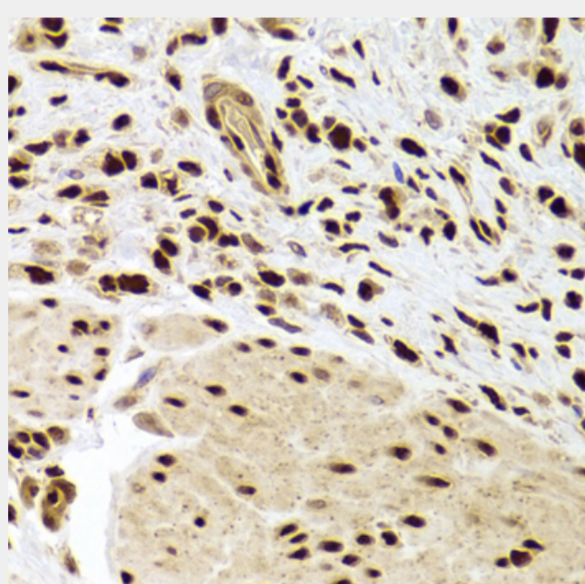
Immunohistochemistry of paraffin-embedded human amygdalitis using ANP32A Antibody at dilution of 1:100 (40x lens).



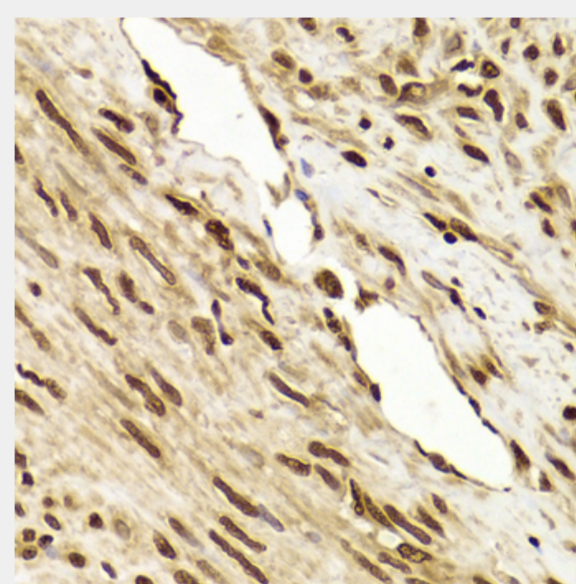
Immunohistochemistry of paraffin-embedded human B cell lymphoma using ANP32A Antibody at dilution of 1:100 (40x lens).



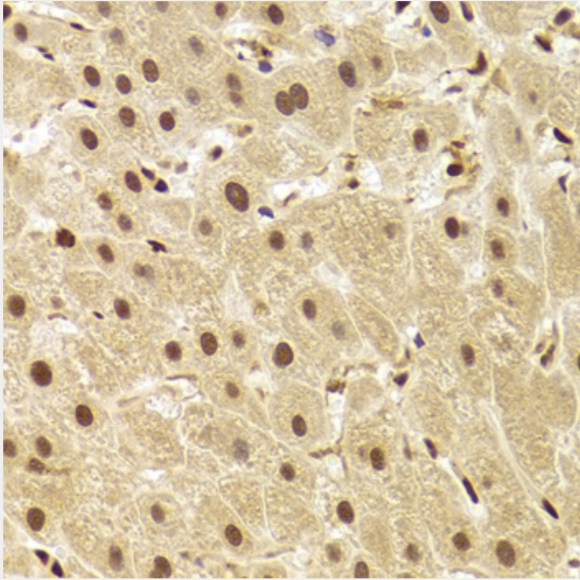
Immunohistochemistry of paraffin-embedded human stomach using ANP32A Antibody at dilution of 1:100 (40x lens).



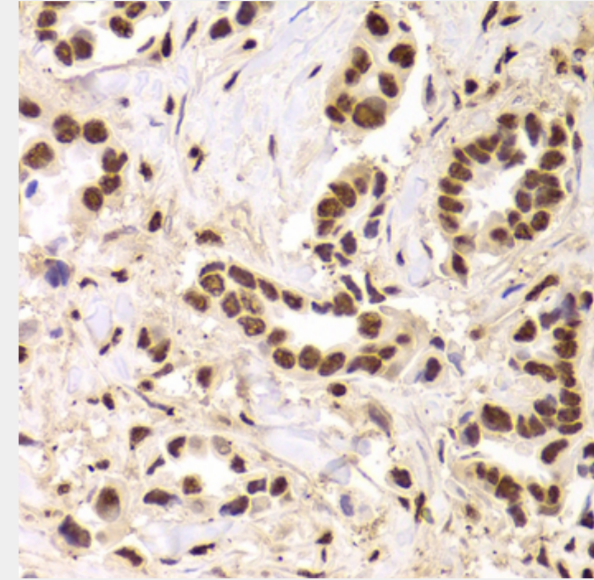
Immunohistochemistry of paraffin-embedded human gastric cancer using ANP32A Antibody at dilution of 1:100 (40x lens).



Immunohistochemistry of paraffin-embedded human leiomyoma of uterus using ANP32A Antibody at dilution of 1:100 (40x lens).



Immunohistochemistry of paraffin-embedded human liver injury using ANP32A Antibody at dilution of 1:100 (40x lens).



Immunohistochemistry of paraffin-embedded human breast cancer using ANP32A Antibody at dilution of 1:100 (40x lens).

All products are for RESEARCH USE ONLY. Not for diagnostic & therapeutic purposes!