

# DOK1 Polyclonal Antibody

Catalog No: tcba9574



## Available Sizes

---

**Size:** 50ul

**Size:** 100ul

**Size:** 200ul



## Specifications

---

**Application:**

WB,IHC,IF

**Research Area:**

Cancer,Cardiovascular,Metabolism,

**Species Reactivity:**

Human,Mouse,Rat

**Host Species:**

Rabbit

**Isotype:**

IgG

**Form:**

Liquid

**Storage Buffer:**

Buffer: PBS with 0.02% sodium azide, 50% glycerol, pH7.3.

**Recommended Dilution:**

WB 1:500 - 1:2000

IHC 1:50 - 1:200

IF 1:50 - 1:100

**Storage Instruction:**

Store at -20°C. Avoid freeze / thaw cycles.

**Alternative Names:**

P62DOK;pp62

**SwissProt:**

Q99704

**Gene ID:**

1796 (human);

**Calculated Molecular Weight:**

19kDa/37kDa/52kDa

**Purification:**

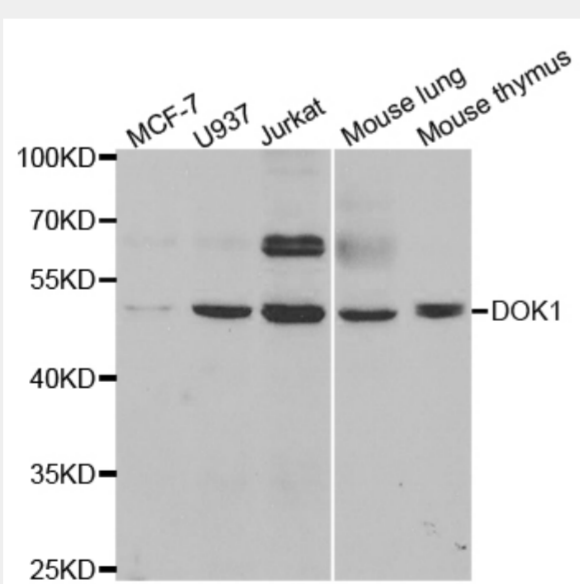
Affinity purification

**Cellular Location:**

Cytoplasm,Nucleus,perinuclear region,

**Product Description**

The protein encoded by this gene is part of a signal transduction pathway downstream of receptor tyrosine kinases. The encoded protein is a scaffold protein that helps form a platform for the assembly of multiprotein signaling complexes. Several transcript variants encoding different isoforms have been found for this gene.



Western blot analysis of extracts of various cell lines, using DOK1 antibody at 1:1000 dilution.

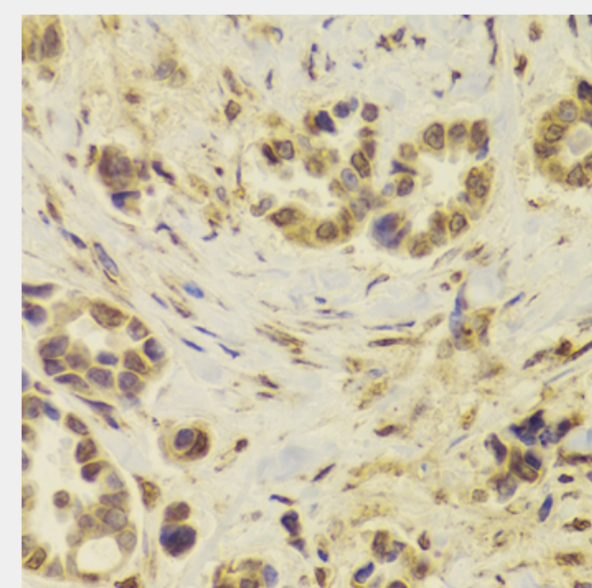
Secondary antibody: HRP Goat Anti-Rabbit IgG (H+L) at 1:10000 dilution.

Lysates/proteins: 25ug per lane.

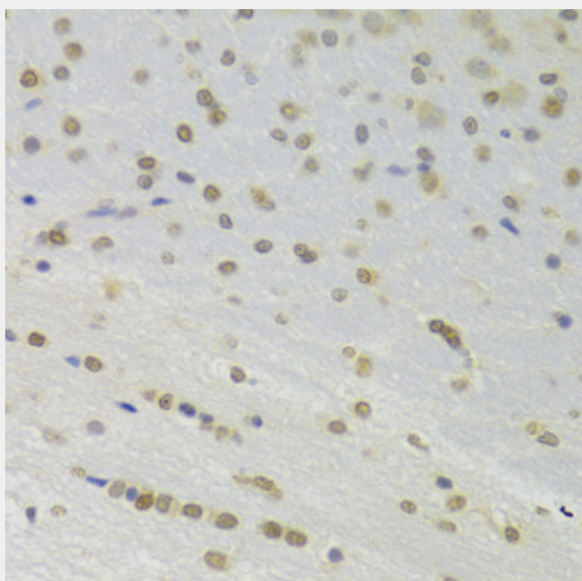
Blocking buffer: 3% nonfat dry milk in TBST.

Detection: ECL Basic Kit.

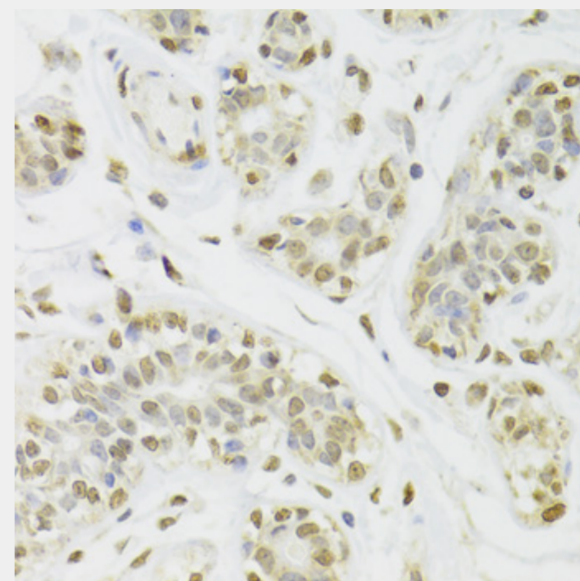
Exposure time: 90s.



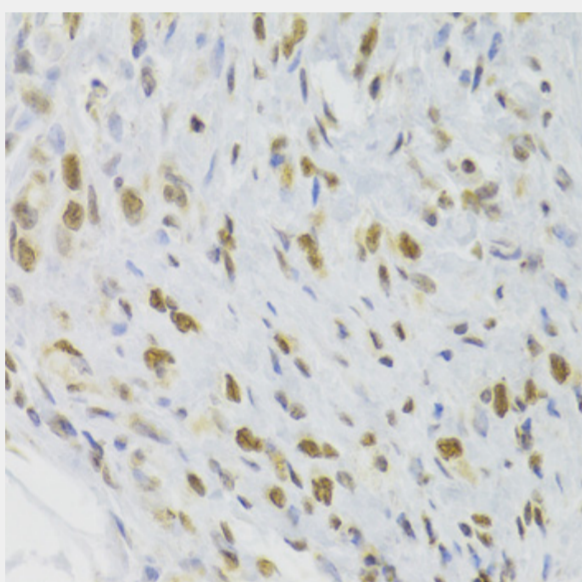
Immunohistochemistry of paraffin-embedded human breast cancer using DOK1 Antibody at dilution of 1:100 (40x lens).



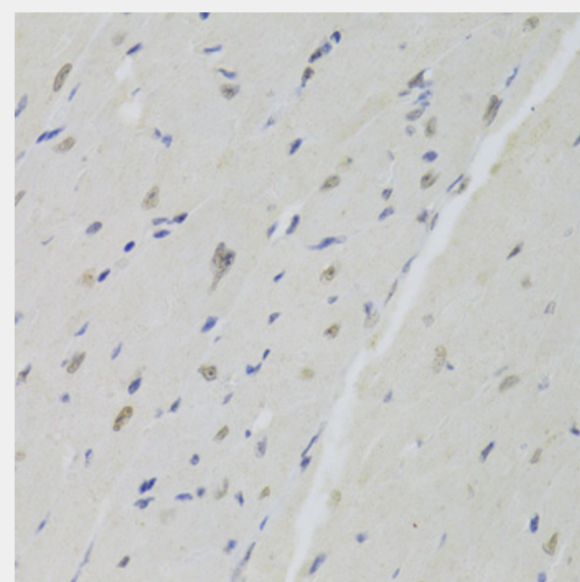
Immunohistochemistry of paraffin-embedded rat brain using DOK1 Antibody at dilution of 1:100 (40x lens).



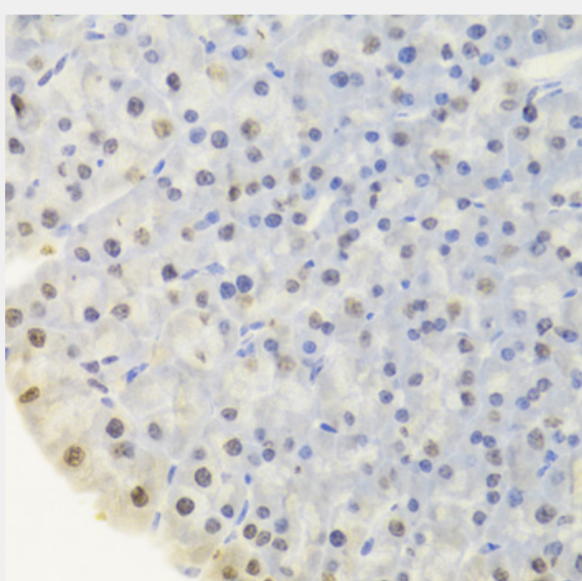
Immunohistochemistry of paraffin-embedded human breast using DOK1 Antibody at dilution of 1:100 (40x lens).



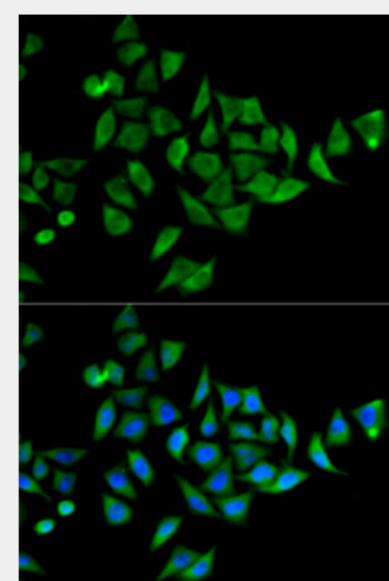
Immunohistochemistry of paraffin-embedded human gastric cancer using DOK1 Antibody at dilution of 1:100 (40x lens).



Immunohistochemistry of paraffin-embedded mouse heart using DOK1 Antibody at dilution of 1:100 (40x lens).



Immunohistochemistry of paraffin-embedded mouse pancreas using DOK1 Antibody at dilution of 1:100 (40x lens).



Immunofluorescence analysis of HeLa cells using DOK1 antibody. Blue: DAPI for nuclear staining.

All products are for RESEARCH USE ONLY. Not for diagnostic & therapeutic purposes!