

RBPJ Polyclonal Antibody

Catalog No: tcba9562



Available Sizes

Size: 50ul

Size: 100ul

Size: 200ul



Specifications

Application:

WB,IHC,IF

Research Area:

Stem cells,Developmental Biology,Notch pathway,Epigenetics,

Species Reactivity:

Human,Mouse,Rat

Host Species:

Rabbit

Isotype:

IgG

Form:

Liquid

Storage Buffer:

Buffer: PBS with 0.02% sodium azide, 50% glycerol, pH7.3.

Recommended Dilution:

WB 1:500 - 1:2000

IHC 1:50 - 1:200

IF 1:20 - 1:50

Storage Instruction:

Store at -20°C. Avoid freeze / thaw cycles.

Alternative Names:

AOS3;CBF1;csl;IGKJRB;IGKJRB1;KBF2;RBP-J;RBPJK;RBPSUH;SUH

SwissProt:

Q06330

Gene ID:

3516 (human);

Calculated Molecular Weight:

45kDa/47kDa/51kDa/54kDa/55kDa

Purification:

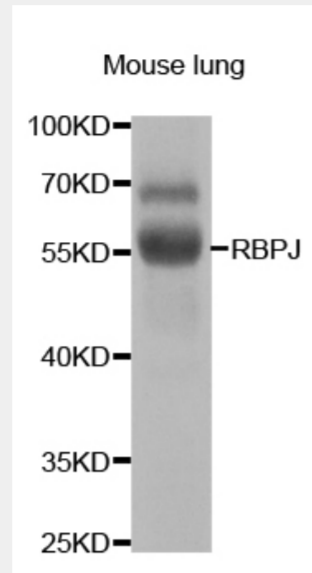
Affinity purification

Cellular Location:

Cytoplasm,Nucleus,

Product Description

The protein encoded by this gene is a transcriptional regulator important in the Notch signaling pathway. The encoded protein acts as a repressor when not bound to Notch proteins and an activator when bound to Notch proteins. It is thought to function by recruiting chromatin remodeling complexes containing histone deacetylase or histone acetylase proteins to Notch signaling pathway genes. Several transcript variants encoding different isoforms have been found for this gene, and several pseudogenes of this gene exist on chromosome 9.



Western blot analysis of extracts of mouse lung, using RBPJ antibody at 1:1000 dilution.

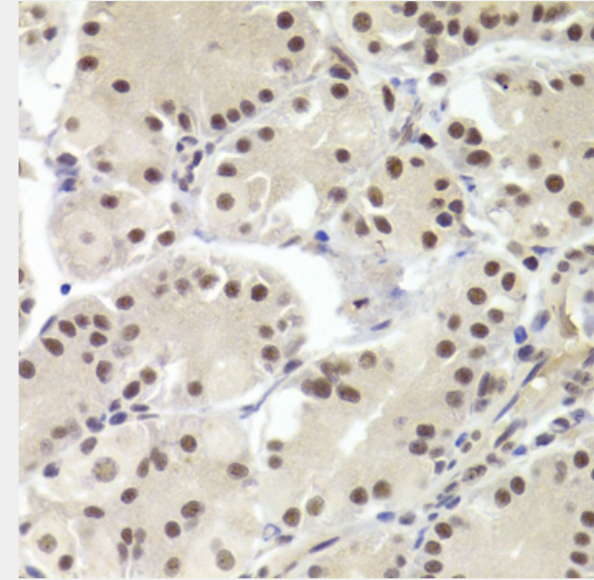
Secondary antibody: HRP Goat Anti-Rabbit IgG (H+L) at 1:10000 dilution.

Lysates/proteins: 25ug per lane.

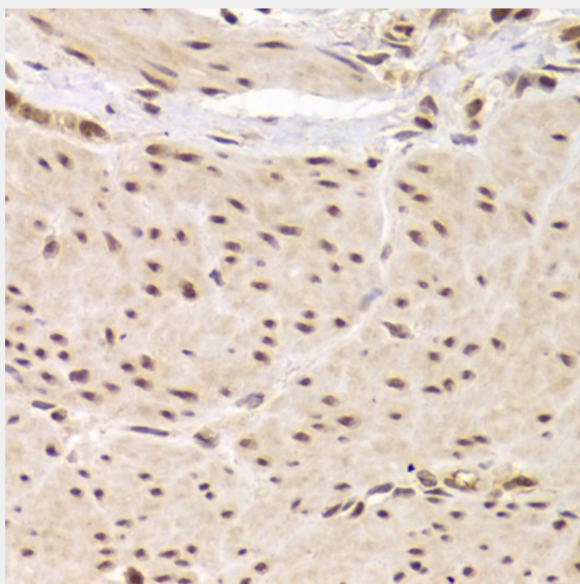
Blocking buffer: 3% nonfat dry milk in TBST.

Detection: ECL Basic Kit.

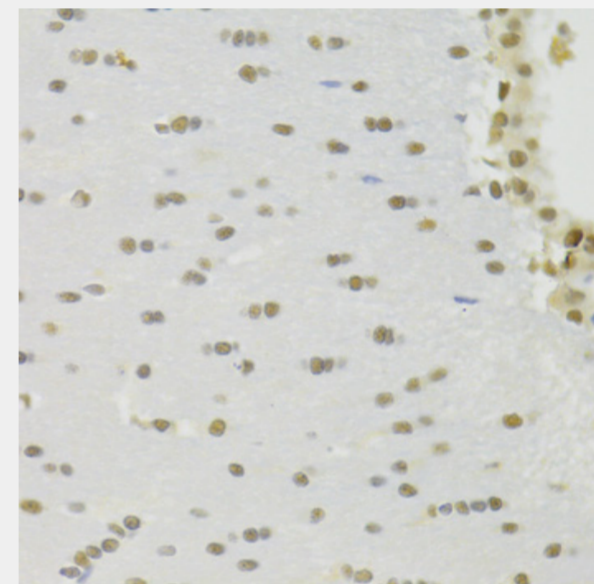
Exposure time: 90s.



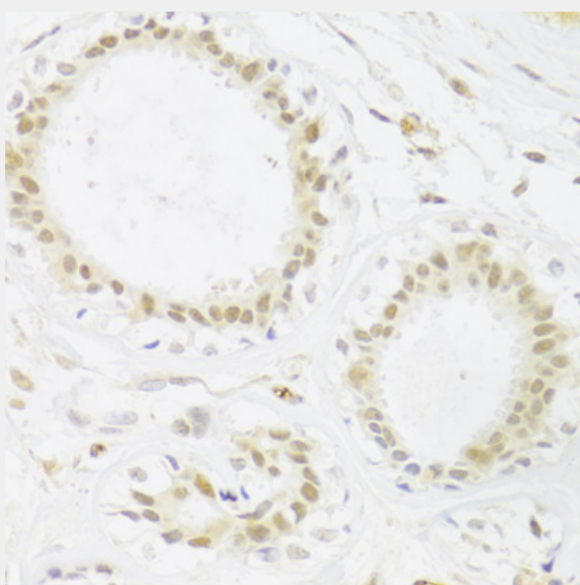
Immunohistochemistry of paraffin-embedded human stomach using RBPJ Antibody at dilution of 1:100 (40x lens).



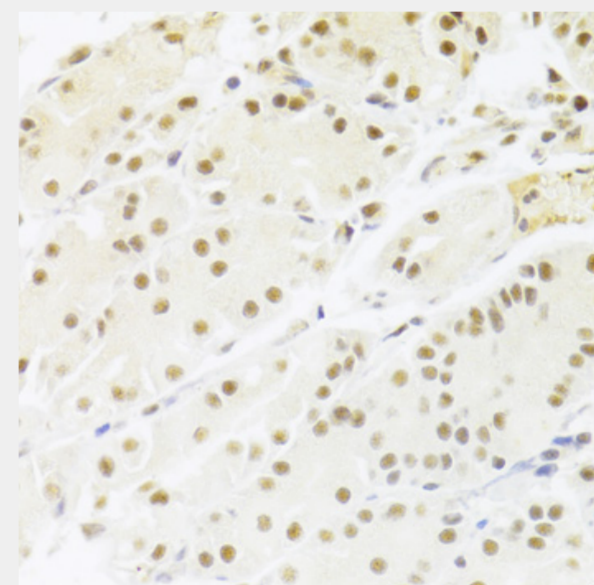
Immunohistochemistry of paraffin-embedded human gastric cancer using RBPJ Antibody at dilution of 1:100 (40x lens).



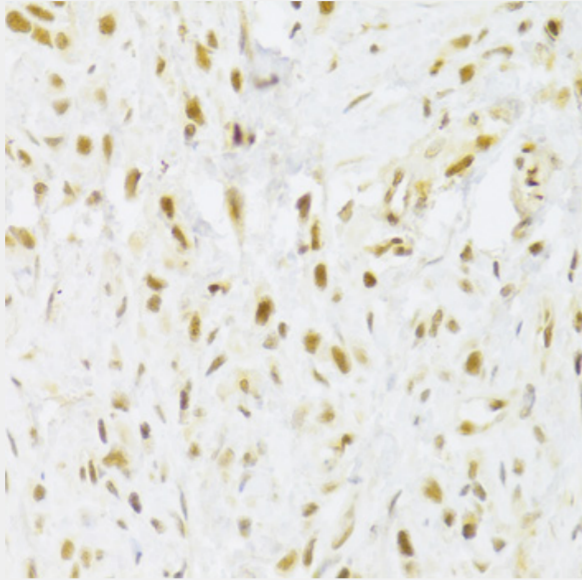
Immunohistochemistry of paraffin-embedded rat brain using RBPJ Antibody at dilution of 1:100 (40x lens).



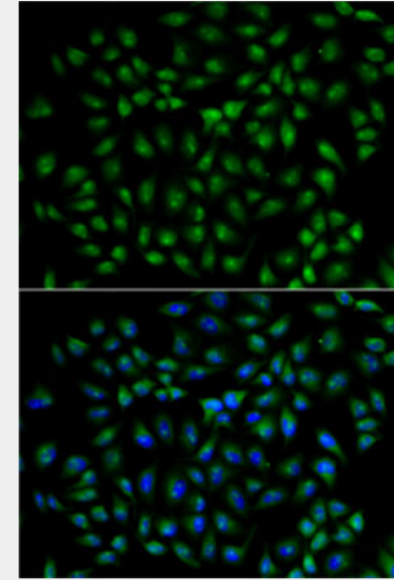
Immunohistochemistry of paraffin-embedded human breast using RBPJ Antibody at dilution of 1:100 (40x lens).



Immunohistochemistry of paraffin-embedded human stomach using RBPJ Antibody at dilution of 1:100 (40x lens).



Immunohistochemistry of paraffin-embedded human gastric cancer using RBPJ Antibody at dilution of 1:100 (40x lens).



Immunofluorescence analysis of U2OS cells using RBPJ antibody. Blue: DAPI for nuclear staining.

All products are for RESEARCH USE ONLY. Not for diagnostic & therapeutic purposes!