

# CTNNA1 Polyclonal Antibody

Catalog No: tcba9522



## Available Sizes

**Size:** 50ul

**Size:** 100ul

**Size:** 200ul



## Specifications

**Application:**

WB,IHC,IP

**Research Area:**

Cancer,Stem cells,Wnt pathway,Developmental Biology,RNA Binding Protein(RBP),

**Species Reactivity:**

Human,Mouse,Rat

**Host Species:**

Rabbit

**Isotype:**

IgG

**Form:**

Liquid

**Storage Buffer:**

Buffer: PBS with 0.02% sodium azide, 50% glycerol, pH7.3.

**Recommended Dilution:**

WB 1:500 - 1:2000

IHC 1:50 - 1:200

IP 1:50 - 1:100

**Storage Instruction:**

Store at -20°C. Avoid freeze / thaw cycles.

---

**Alternative Names:**

CAP102;MDPT2

---

**SwissProt:**

P35221

---

**Gene ID:**

1495 (human);

---

**Calculated Molecular Weight:**

59kDa/100kDa/102kDa

---

**Purification:**

Affinity purification

---

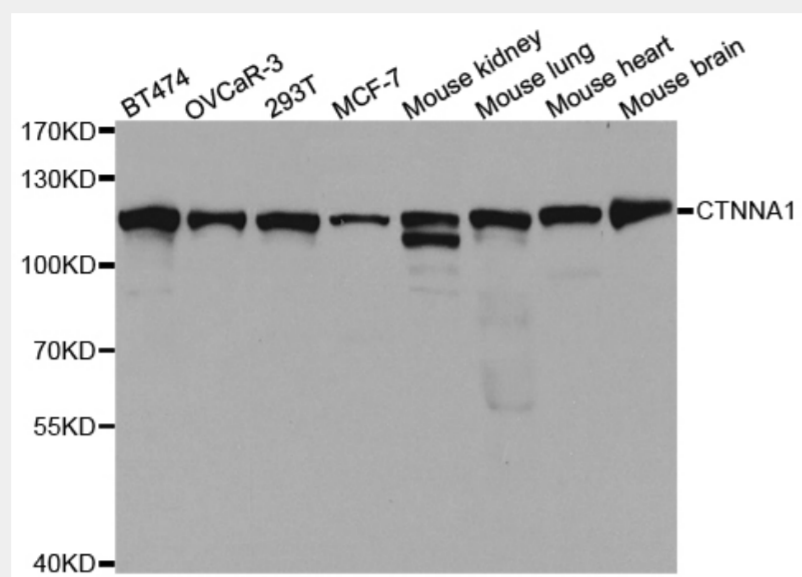
**Cellular Location:**

Cell junction,Cell junction,Cell membrane,Cytoplasm,Cytoplasmic side,Peripheral membrane protein,adherens junction,cytoskeleton,

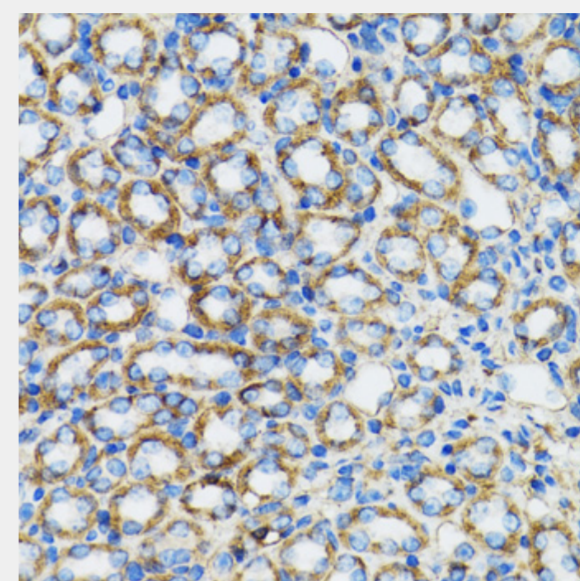
---

**Product Description**

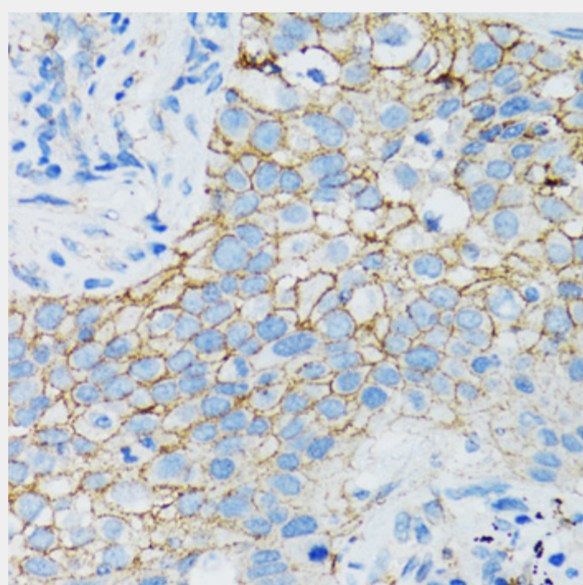
This gene encodes a member of the catenin family of proteins that play an important role in cell adhesion process by connecting cadherins located on the plasma membrane to the actin filaments inside the cell. The encoded mechanosensing protein contains three vinculin homology domains and undergoes conformational changes in response to cytoskeletal tension, resulting in the reconfiguration of cadherin-actin filament connections. Certain mutations in this gene cause butterfly-shaped pigment dystrophy.



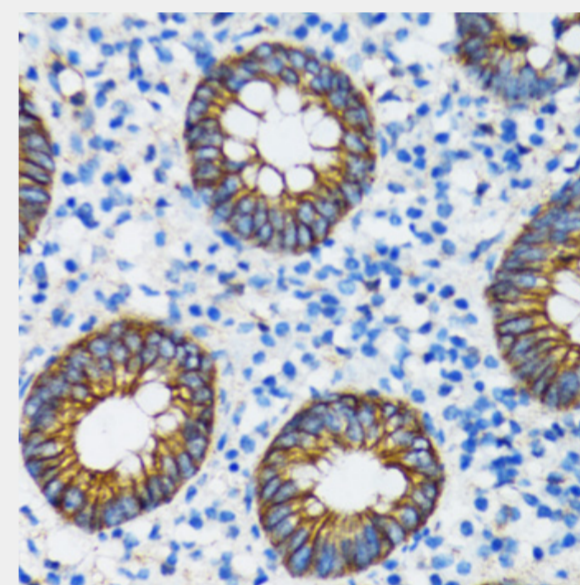
Western blot analysis of extracts of various cell lines, using CTNNA1 antibody at 1:1000 dilution.  
Secondary antibody: HRP Goat Anti-Rabbit IgG (H+L) at 1:10000 dilution.  
Lysates/proteins: 25ug per lane.  
Blocking buffer: 3% nonfat dry milk in TBST.  
Detection: ECL Basic Kit.  
Exposure time: 60s.



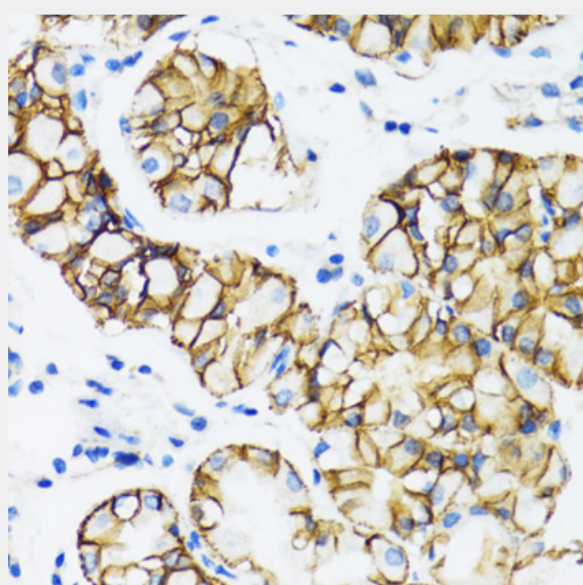
Immunohistochemistry of paraffin-embedded rat kidney using CTNNA1 antibody at dilution of 1:100 (40x lens).



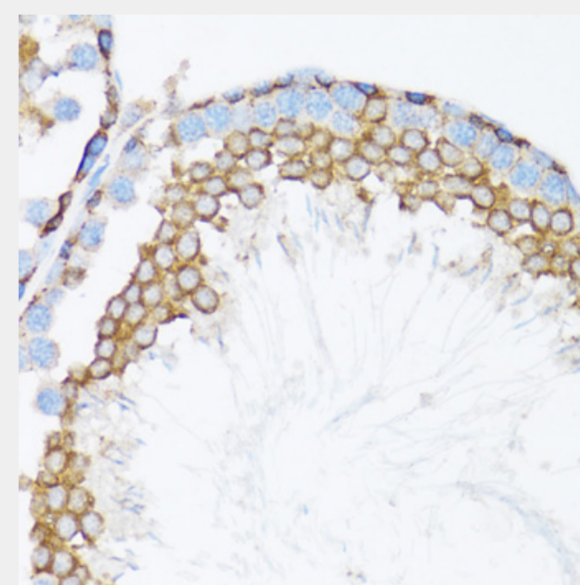
Immunohistochemistry of paraffin-embedded human lung cancer using CTNNA1 antibody at dilution of 1:100 (40x lens).



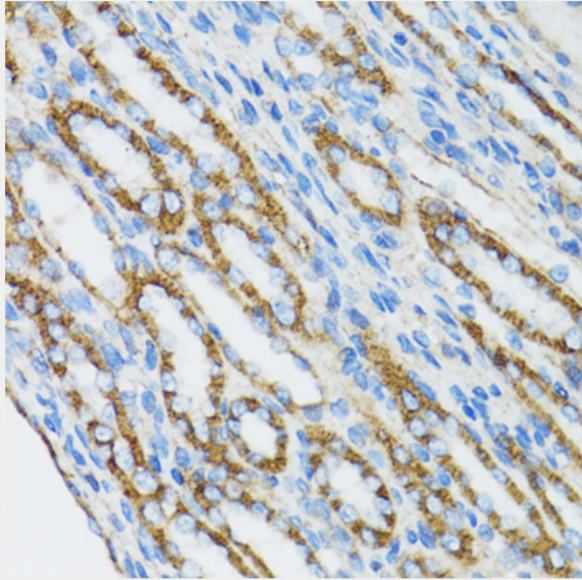
Immunohistochemistry of paraffin-embedded human vermiform appendix using CTNNA1 antibody at dilution of 1:100 (40x lens).



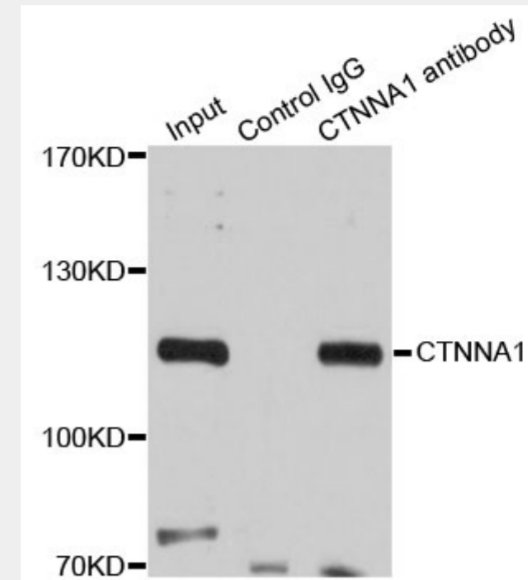
Immunohistochemistry of paraffin-embedded human stomach using CTNNA1 antibody at dilution of 1:100 (40x lens).



Immunohistochemistry of paraffin-embedded mouse testis using CTNNA1 antibody at dilution of 1:100 (40x lens).



Immunohistochemistry of paraffin-embedded mouse kidney using CTNNA1 antibody at dilution of 1:100 (40x lens).



Immunoprecipitation analysis of 200ug extracts of 293T cells using 3ug CTNNA1 antibody. Western blot was performed from the immunoprecipitate using CTNNA1 antibody at a dilution of 1:500.

All products are for RESEARCH USE ONLY. Not for diagnostic & therapeutic purposes!