

RNF2 Polyclonal Antibody

Catalog No: tcba9469



Available Sizes

Size: 50ul

Size: 100ul

Size: 200ul



Specifications

Application:

WB,IHC,IP,ChIP

Research Area:

,Epigenetics,

Species Reactivity:

Human,Mouse,Rat

Host Species:

Rabbit

Isotype:

IgG

Form:

Liquid

Storage Buffer:

Buffer: PBS with 0.02% sodium azide, 50% glycerol, pH7.3.

Recommended Dilution:

WB 1:500 - 1:2000

IHC 1:50 - 1:200

IP 1:50 - 1:200

ChIP 1:50 - 1:200

Storage Instruction:

Store at -20°C. Avoid freeze / thaw cycles.

Alternative Names:

BAP-1;BAP1;DING;HIPI3;RING1B;RING2

SwissProt:

Q99496

Gene ID:

6045 (human);

Calculated Molecular Weight:

29kDa/37kDa

Purification:

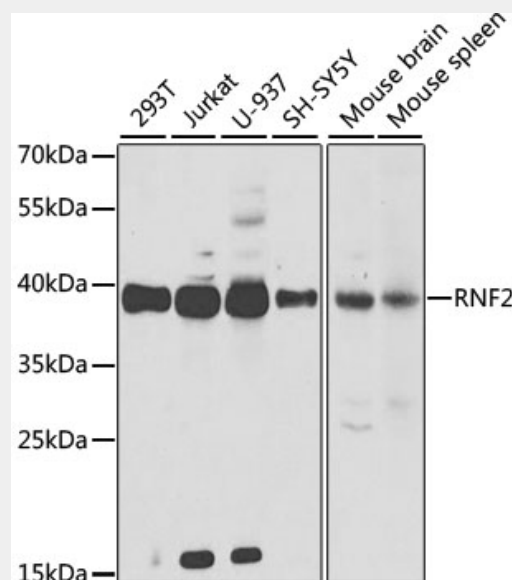
Affinity purification

Cellular Location:

Chromosome,Nucleus,

Product Description

Polycomb group (PcG) of proteins form the multiprotein complexes that are important for the transcription repression of various genes involved in development and cell proliferation. The protein encoded by this gene is one of the PcG proteins. It has been shown to interact with, and suppress the activity of, transcription factor CP2 (TFCP2/CP2). Studies of the mouse counterpart suggested the involvement of this gene in the specification of anterior-posterior axis, as well as in cell proliferation in early development. This protein was also found to interact with huntingtin interacting protein 2 (HIP2), an ubiquitin-conjugating enzyme, and possess ubiquitin ligase activity.



Western blot analysis of extracts of various cell lines, using RNF2 antibody at 1:1000 dilution.

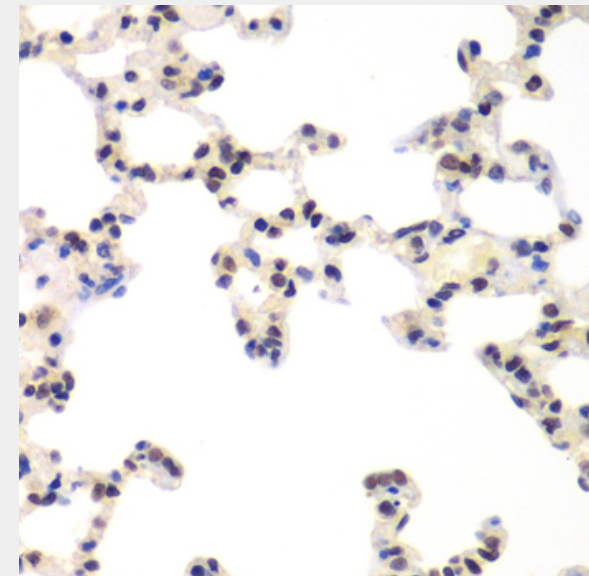
Secondary antibody: HRP Goat Anti-Rabbit IgG (H+L) at 1:10000 dilution.

Lysates/proteins: 25ug per lane.

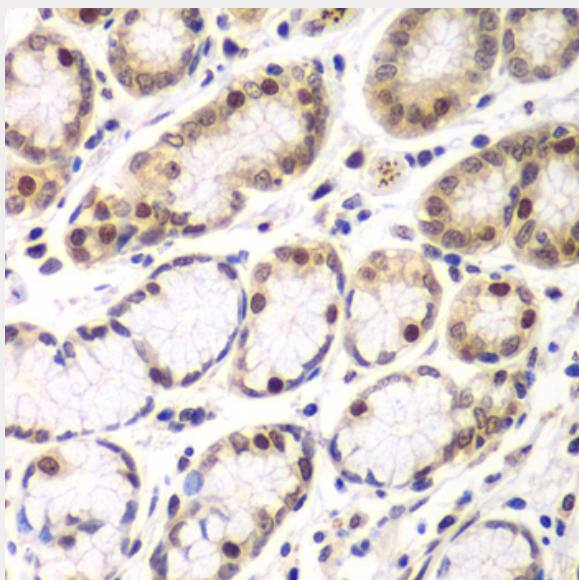
Blocking buffer: 3% nonfat dry milk in TBST.

Detection: ECL Basic Kit.

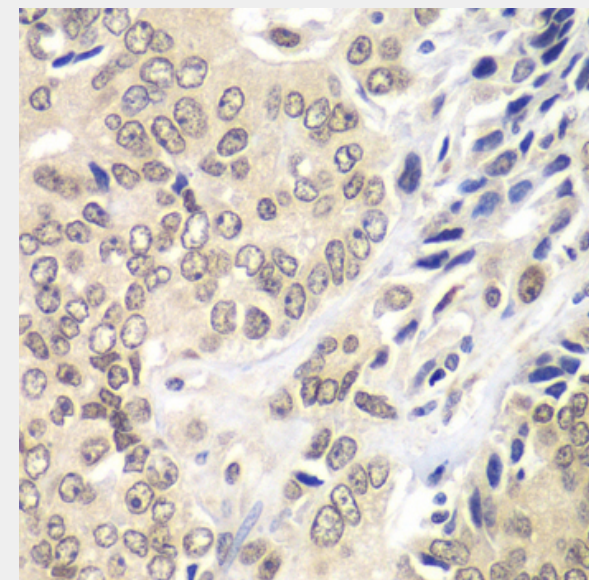
Exposure time: 90s.



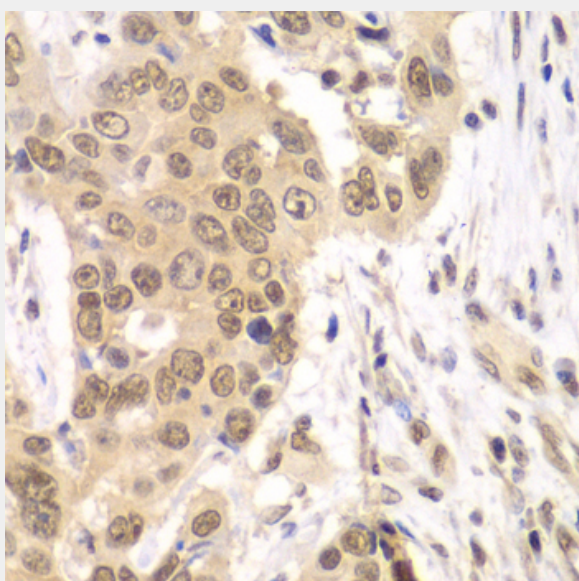
Immunohistochemistry of paraffin-embedded rat lung using RNF2 antibody at dilution of 1:100 (40x lens).



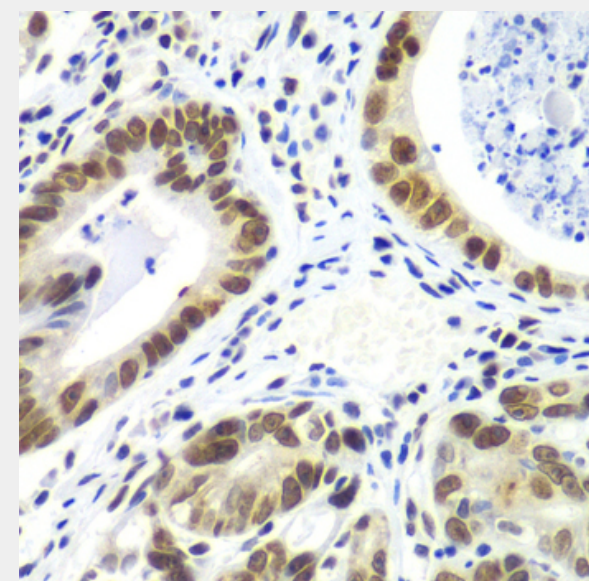
Immunohistochemistry of paraffin-embedded human colon using RNF2 antibody at dilution of 1:100 (40x lens).



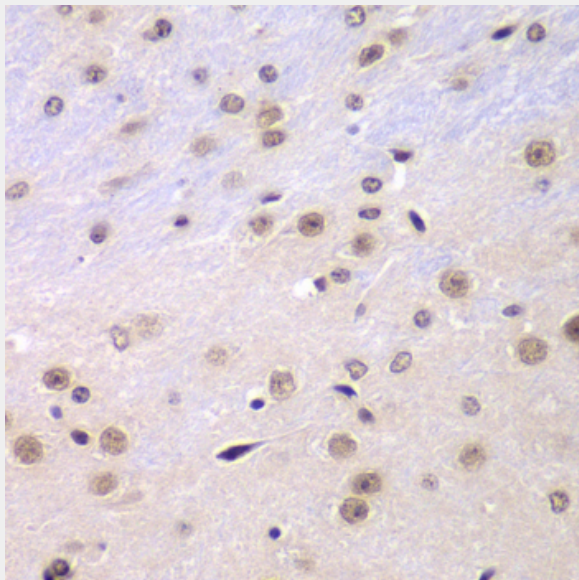
Immunohistochemistry of paraffin-embedded human prostate cancer using RNF2 antibody at dilution of 1:100 (40x lens).



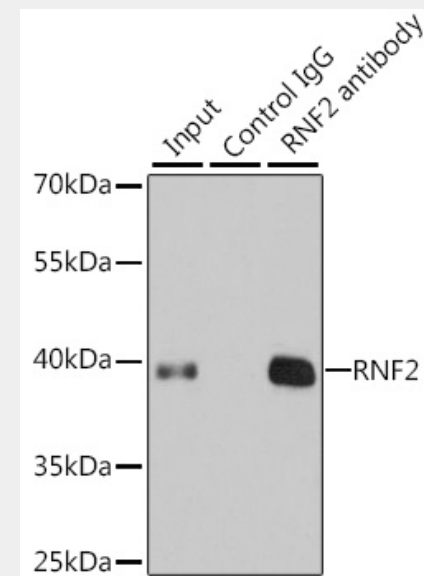
Immunohistochemistry of paraffin-embedded human esophageal cancer using RNF2 antibody at dilution of 1:100 (40x lens).



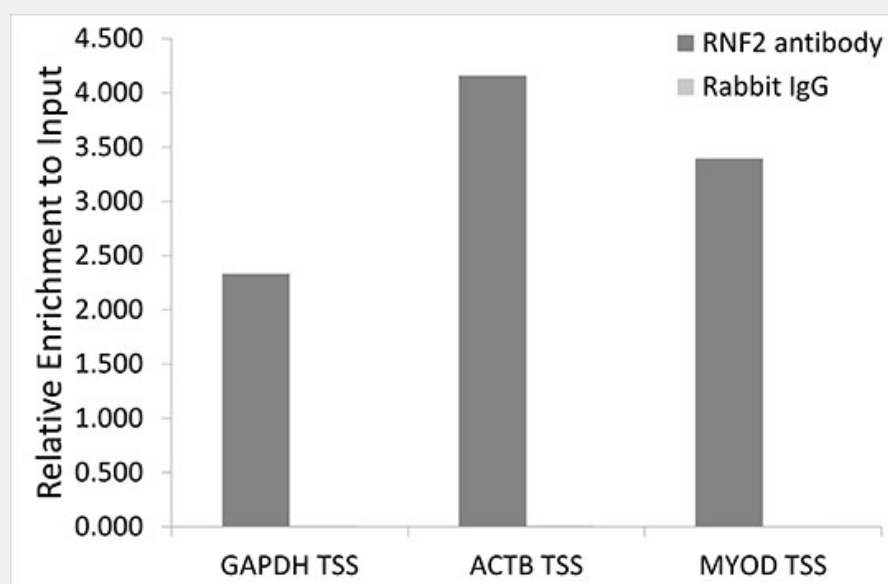
Immunohistochemistry of paraffin-embedded human gastric cancer using RNF2 antibody at dilution of 1:100 (40x lens).



Immunohistochemistry of paraffin-embedded mouse brain using RNF2 antibody at dilution of 1:100 (40x lens).



Immunoprecipitation analysis of 200ug extracts of 293T cells using 1ug RNF2 antibody. Western blot was performed from the immunoprecipitate using RNF2 antibody at a dilution of 1:1000.



Chromatin immunoprecipitation analysis extracts of HeLa cells, using RNF2 antibody and rabbit IgG. The amount of immunoprecipitated DNA was checked by quantitative PCR. Histogram was constructed by the ratios of the immunoprecipitated DNA to the input.

All products are for RESEARCH USE ONLY. Not for diagnostic & therapeutic purposes!