

# PRDM14 Polyclonal Antibody

Catalog No: tcba9449



## Available Sizes

---

**Size:** 50ul

**Size:** 100ul

**Size:** 200ul



## Specifications

---

**Application:**

WB,IHC,IF,IP,ChIP

**Research Area:**

,

**Species Reactivity:**

Human,Mouse,Rat

**Host Species:**

Rabbit

**Isotype:**

IgG

**Form:**

Liquid

**Storage Buffer:**

Buffer: PBS with 0.02% sodium azide, 50% glycerol, pH7.3.

**Recommended Dilution:**

WB 1:500 - 1:2000

IHC 1:50 - 1:200

IF 1:50 - 1:200

IP 1:20 - 1:100

ChIP 1:20 - 1:100

**Storage Instruction:**

Store at -20°C. Avoid freeze / thaw cycles.

**Alternative Names:**

PFM11

**SwissProt:**

Q9GZV8

**Gene ID:**

63978 (human);

**Calculated Molecular Weight:**

64kDa

**Purification:**

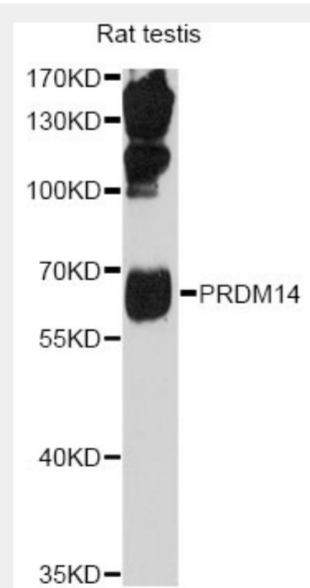
Affinity purification

**Cellular Location:**

Nucleus,

**Product Description**

This gene encodes a member of the PRDI-BF1 and RIZ homology domain containing (PRDM) family of transcriptional regulators. The encoded protein may possess histone methyltransferase activity and plays a critical role in cell pluripotency by suppressing the expression of differentiation marker genes. Expression of this gene may play a role in breast cancer.



Western blot analysis of extracts of rat testis, using PRDM14 antibody at 1:1000 dilution.

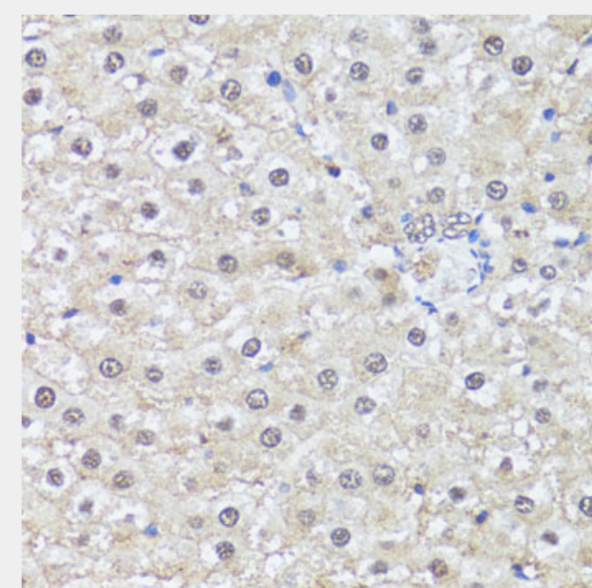
Secondary antibody: HRP Goat Anti-Rabbit IgG (H+L) at 1:10000 dilution.

Lysates/proteins: 25ug per lane.

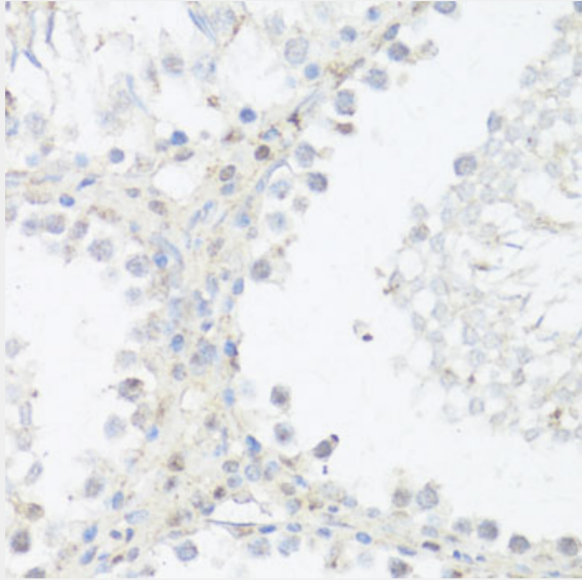
Blocking buffer: 3% nonfat dry milk in TBST.

Detection: ECL Enhanced Kit.

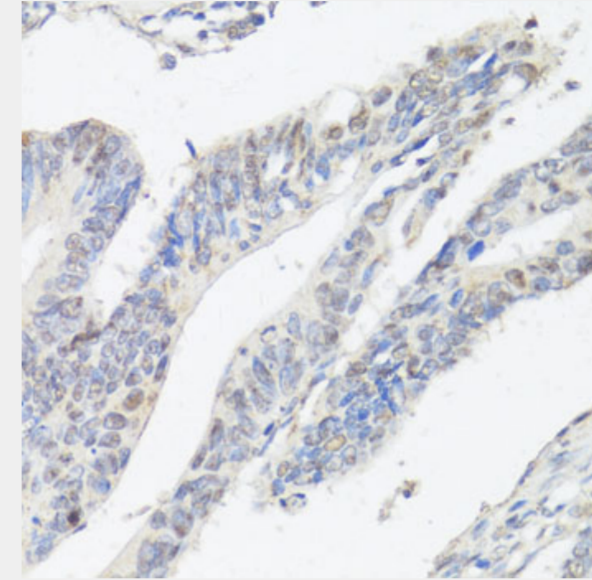
Exposure time: 90s.



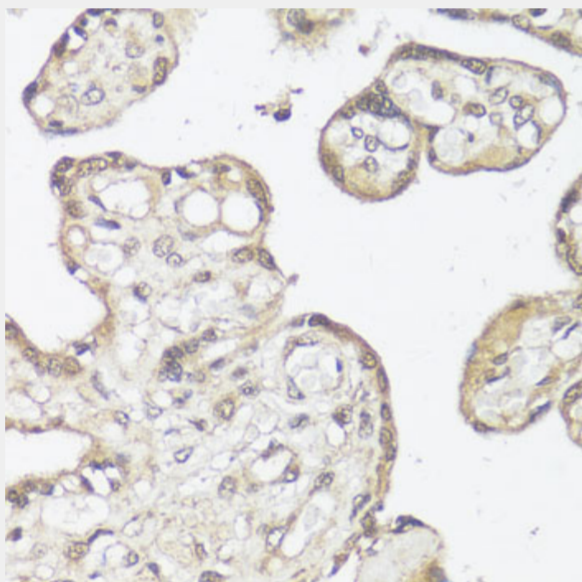
Immunohistochemistry of paraffin-embedded rat liver using PRDM14 antibody at dilution of 1:200 (40x lens).



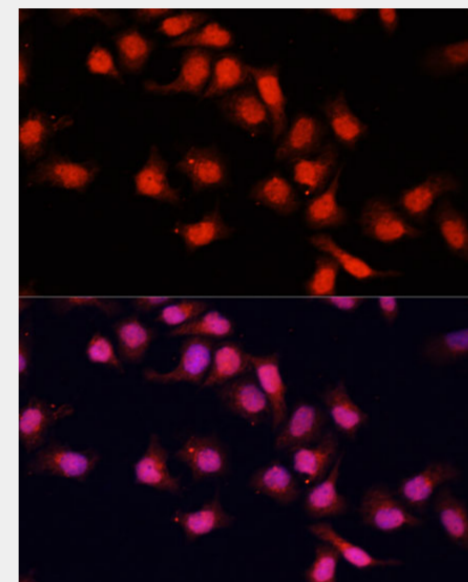
Immunohistochemistry of paraffin-embedded rat testis using PRDM14 antibody at dilution of 1:200 (40x lens).



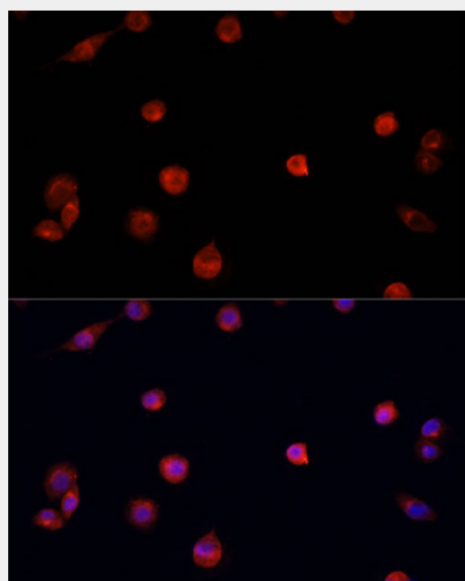
Immunohistochemistry of paraffin-embedded human colon carcinoma using PRDM14 antibody at dilution of 1:200 (40x lens).



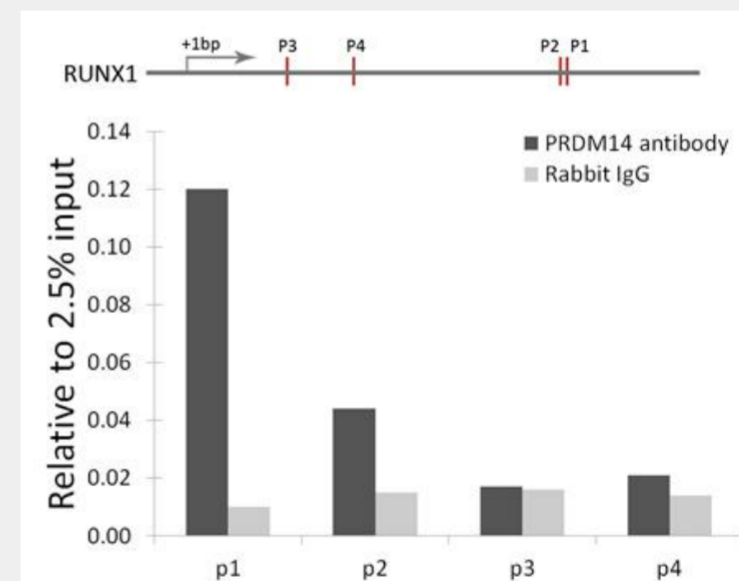
Immunohistochemistry of paraffin-embedded human placenta using PRDM14 antibody at dilution of 1:200 (40x lens).



Immunofluorescence analysis of HeLa cells using PRDM14 antibody at dilution of 1:100. Blue: DAPI for nuclear staining.



Immunofluorescence analysis of NIH/3T3 cells using PRDM14 antibody at dilution of 1:100. Blue: DAPI for nuclear staining.



Chromatin immunoprecipitation analysis of RUNX1 gene from 293 cell line, using PRDM14 antibody and rabbit IgG. P1, P2, P3 and P4 were four probes located on RUNX1 gene as the schematic diagram illustrated. The amount of immunoprecipitated DNA was checked by quantitative PCR. Histogram was constructed by the ratios of the immunoprecipitated DNA to the input.

All products are for RESEARCH USE ONLY. Not for diagnostic & therapeutic purposes!