

# PRPF3 Polyclonal Antibody

Catalog No: tcba9404



## Available Sizes

---

**Size:** 50ul

---

**Size:** 100ul

---

**Size:** 200ul

---



## Specifications

---

**Application:**

WB,IHC,IF,IP

---

**Research Area:**

Neuroscience,

---

**Species Reactivity:**

Human,Mouse,Rat

---

**Host Species:**

Rabbit

---

**Isotype:**

IgG

---

**Form:**

Liquid

---

**Storage Buffer:**

Buffer: PBS with 0.02% sodium azide, 50% glycerol, pH7.3.

---

**Recommended Dilution:**

WB 1:500 - 1:2000

IHC 1:50 - 1:200

IF 1:50 - 1:200

IP 1:50 - 1:100

---

**Storage Instruction:**

Store at -20°C. Avoid freeze / thaw cycles.

**Alternative Names:**

HPRP3;HPRP3P;PRP3;Prp3p;RP18;SNRNP90

**SwissProt:**

O43395

**Gene ID:**

9129 (human);

**Calculated Molecular Weight:**

31kDa/77kDa

**Purification:**

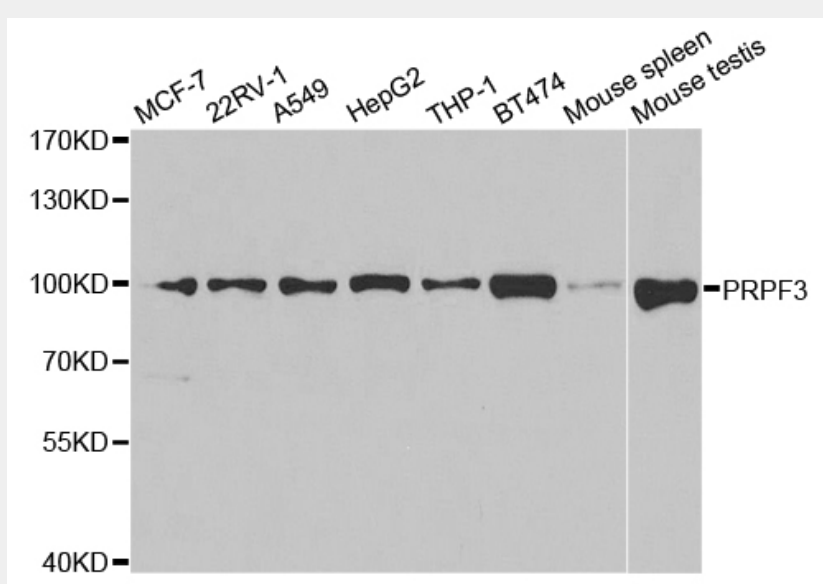
Affinity purification

**Cellular Location:**

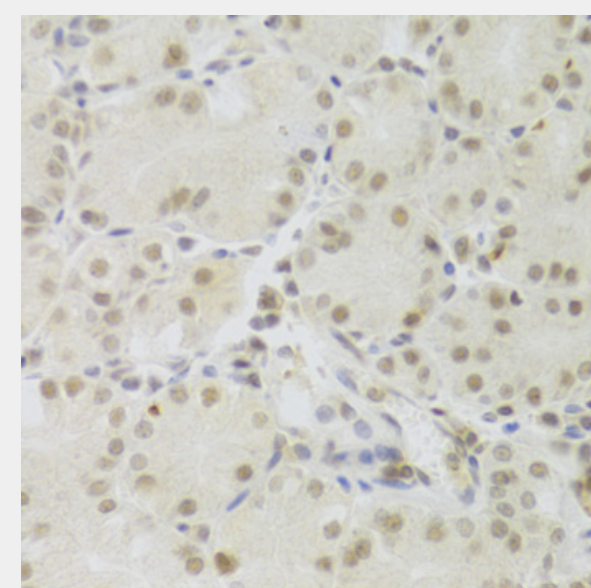
Nucleus speckle,

**Product Description**

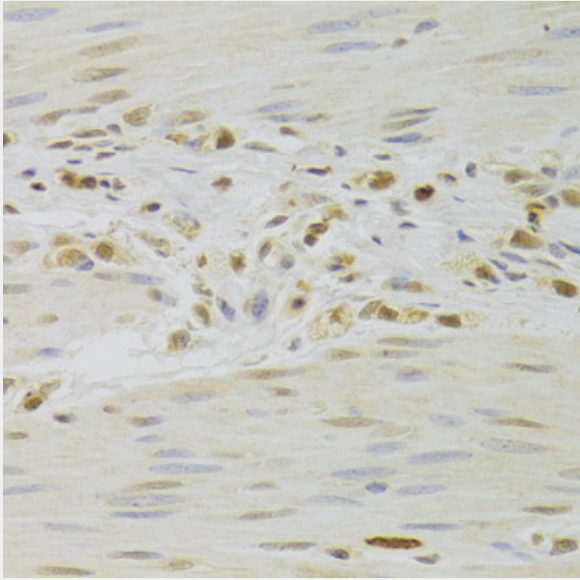
The removal of introns from nuclear pre-mRNAs occurs on complexes called spliceosomes, which are made up of 4 small nuclear ribonucleoprotein (snRNP) particles and an undefined number of transiently associated splicing factors. This gene product is one of several proteins that associate with U4 and U6 snRNPs. Mutations in this gene are associated with retinitis pigmentosa-18.



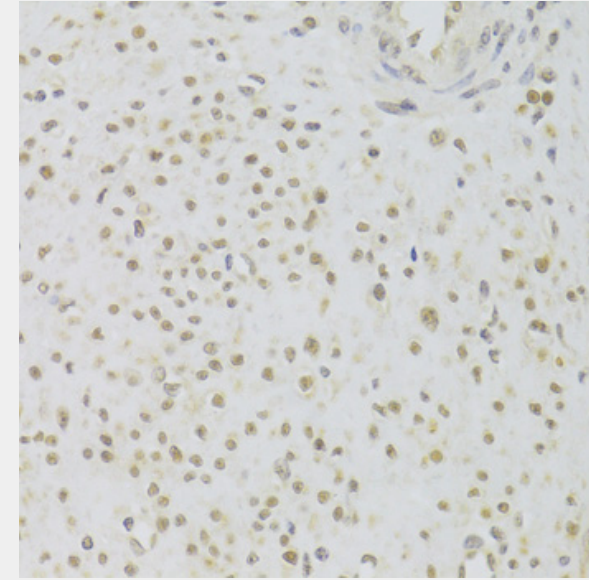
Western blot analysis of extracts of various cell lines, using PRPF3 antibody at 1:1000 dilution.  
Secondary antibody: HRP Goat Anti-Rabbit IgG (H+L) at 1:10000 dilution.  
Lysates/proteins: 25ug per lane.  
Blocking buffer: 3% nonfat dry milk in TBST.  
Detection: ECL Basic Kit.  
Exposure time: 90s.



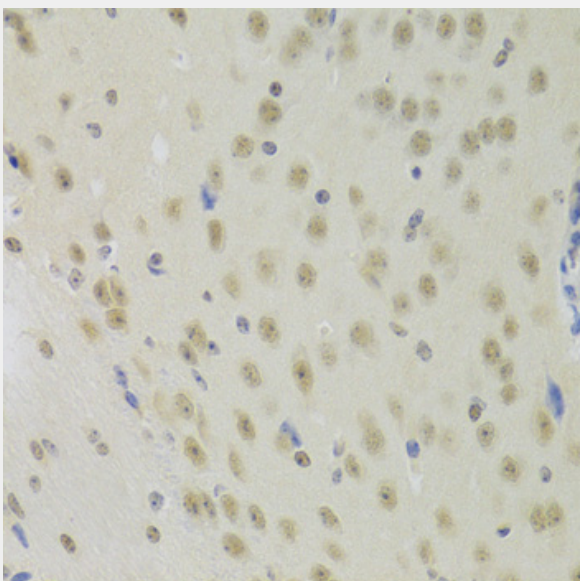
Immunohistochemistry of paraffin-embedded human stomach using PRPF3 Antibody at dilution of 1:100 (40x lens).



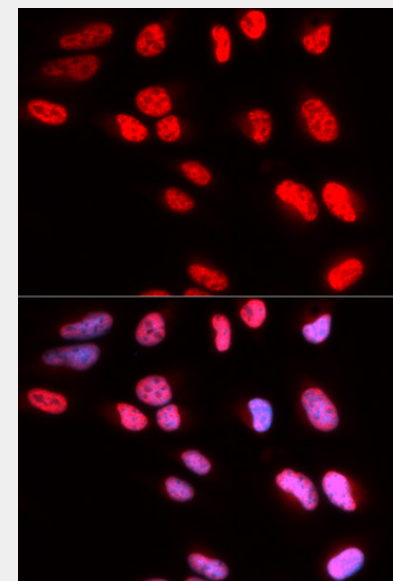
Immunohistochemistry of paraffin-embedded human gastric cancer using PRPF3 Antibody at dilution of 1:100 (40x lens).



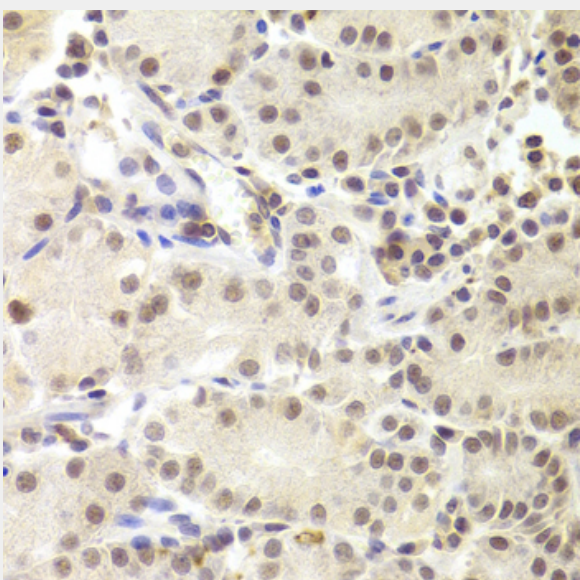
Immunohistochemistry of paraffin-embedded human leiomyoma of uterus using PRPF3 Antibody at dilution of 1:100 (40x lens).



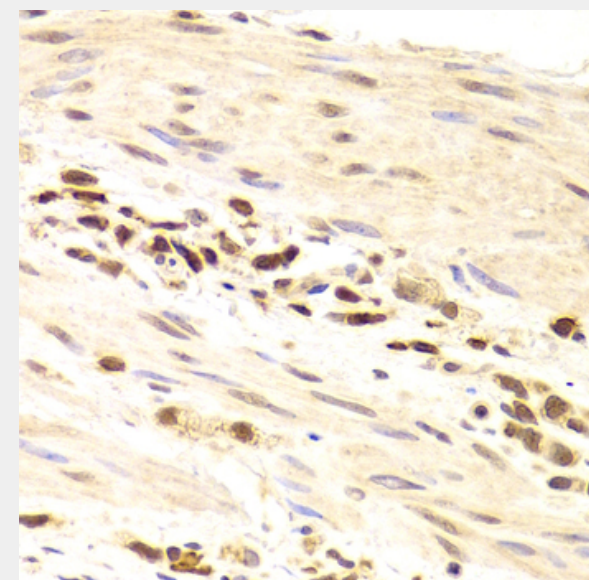
Immunohistochemistry of paraffin-embedded mouse brain using PRPF3 Antibody at dilution of 1:100 (40x lens).



Immunofluorescence analysis of U2OS cells using PRPF3 antibody. Blue: DAPI for nuclear staining.

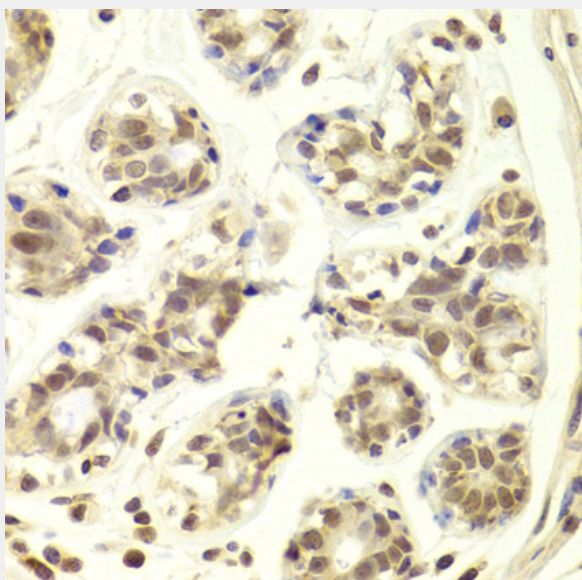


Immunohistochemistry of paraffin-embedded human stomach using PRPF3 Antibody at dilution of 1:100 (40x lens).

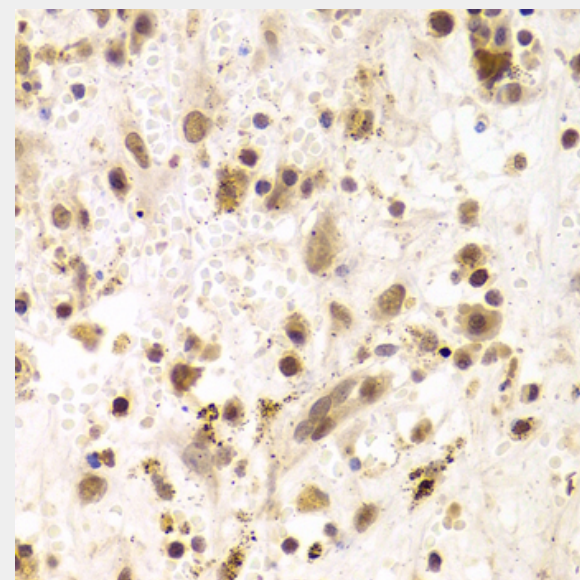


Immunohistochemistry of paraffin-embedded human gastric cancer using PRPF3 Antibody at dilution of 1:100 (40x lens).

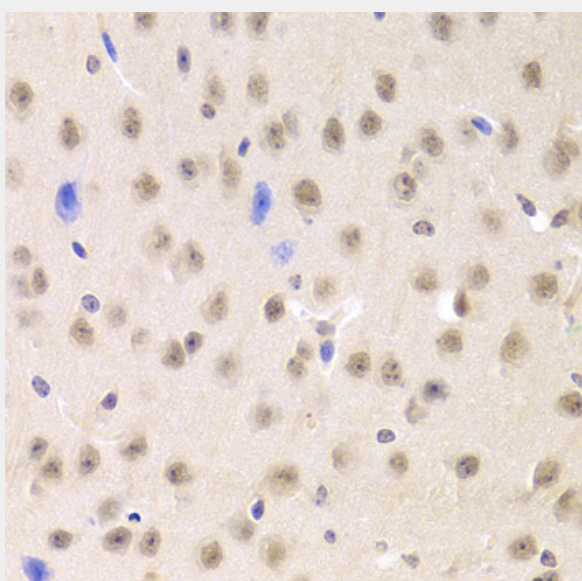




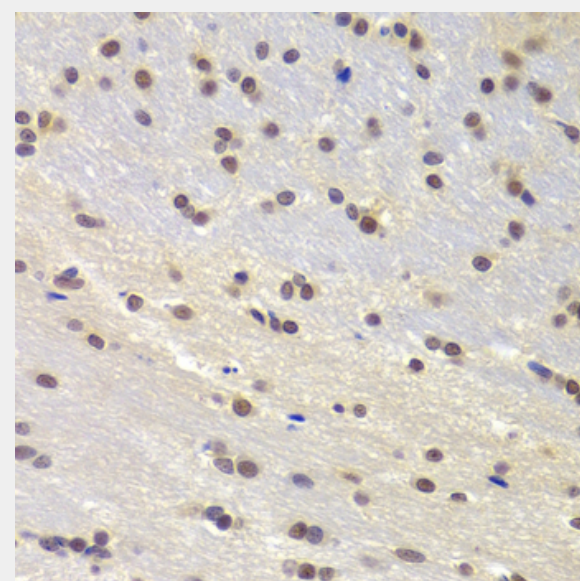
Immunohistochemistry of paraffin-embedded human breast using PRPF3 Antibody at dilution of 1:100 (40x lens).



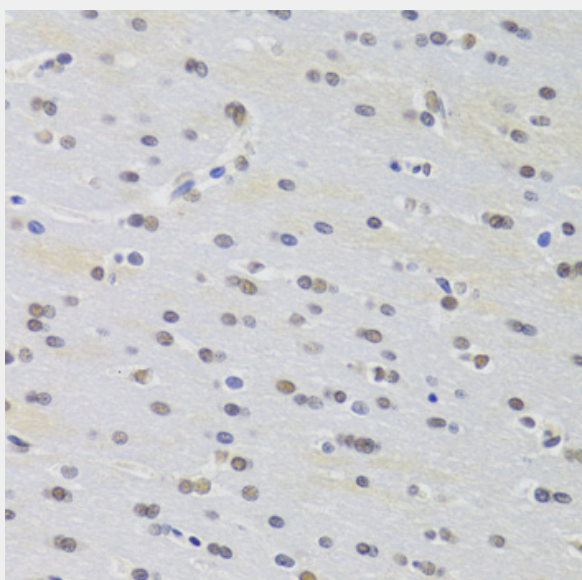
Immunohistochemistry of paraffin-embedded human liver cancer using PRPF3 Antibody at dilution of 1:100 (40x lens).



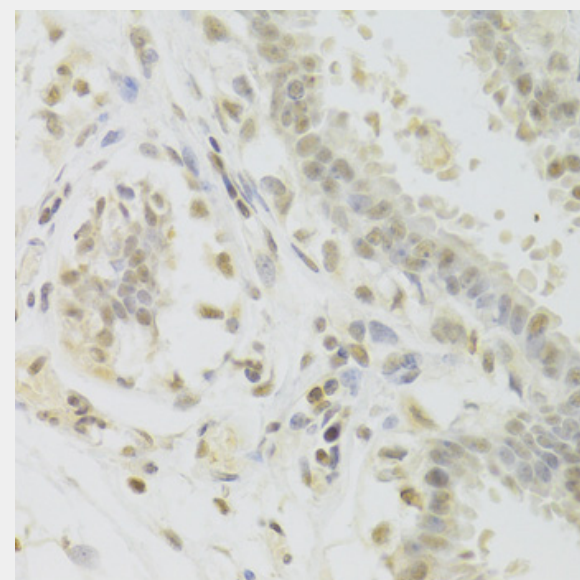
Immunohistochemistry of paraffin-embedded mouse brain using PRPF3 Antibody at dilution of 1:100 (40x lens).



Immunohistochemistry of paraffin-embedded rat brain using PRPF3 Antibody at dilution of 1:100 (40x lens).



Immunohistochemistry of paraffin-embedded rat brain using PRPF3 Antibody at dilution of 1:100 (40x lens).



Immunohistochemistry of paraffin-embedded human breast using PRPF3 Antibody at dilution of 1:100 (40x lens).

All products are for RESEARCH USE ONLY. Not for diagnostic & therapeutic purposes!